

Product datasheet for RR202529

Rae1 (NM_001033708) Rat Tagged ORF Clone

Product data:

Product Type:	Expression Plasmids
Product Name:	Rae1 (NM_001033708) Rat Tagged ORF Clone
Tag:	Myc-DDK
Symbol:	Rae1
Synonyms:	MGC124870; MGC125198
Vector:	pCMV6-Entry (PS100001)
E. coli Selection:	Kanamycin (25 ug/mL)
Cell Selection:	Neomycin
ORF Nucleotide Sequence:	>RR202529 representing NM_001033708 Red=Cloning site Blue=ORF Green=Tags(s)

TTTTGTAATACGACTCACTATAGGGCGCCGGAATTCGTCGACTGGATCCGGTACCGAGGAGATCTGCC
GCC**GCGATCGCC**

ATGAGTCTGTTTGAACAACCTCTGGTTTTGGGACTGGTGGGACCAGCATGTTTGGGAGCACAACCACAG
ATAACCATAACCCAATGAAGGATATTGAAGTAACGTCTTCTCCTGATGACAGCATCGTTGTCTGTCTTT
CAGCCCACCAACCTTACCAGGGAACCTTCTTATTGCAGGATCGTGGGCTAATGATGTTTCGCTGCTGGAA
GTGCAAGACAGCGGGCAAACCATTCCAAAGGCCAGCAAATGCATACCGGCCAGTGCTTGTCTGTCT
GGAGTGACGATGGGAGCAAAGTGTTCACAGCATCGTGTGACAAGACAGCCAAGATGTGGGACCTGAACAG
CAACCAGGCCATTAGATAGCACAGCAGCATGCTCCCGTTAAGACCATACATTGGATCAAAGCCCCAAAC
TACAGCTGCGTGATGACCGGGAGCTGGGATAAGACCCTGAAGTTTTGGGATACCGGTCGTCAAATCCTA
TGATGGTCTGCAGCTCCCTGAGCGCTGTACTGTGCAGATGTGATCTATCCGATGGCTGTGGTGGCCAC
TGCAGAAAGGGGCTGATTGTGTACCAGTTGGAGAACCAGCCCTCTGAGTTCAGGAGGATAGAGTCTCCA
CTGAAGCACCAGCATCGGTGTGGCTATCTTTAAAGACAAACAGAAACAAGCCAACGGGTTTTGCTCTTG
GGAGATTGAGGGGAGAGTGGCCATTCACATCAACCCTCAAATCCGGCCAAAGATAACTTCACCTT
CAAATGCCATCGATCCAACGGTACCAACACTTCTGCTCCTCAAGACATCTATGCAGTGAACGGCATCGCC
TTCCACCTGTCCATGGCACCCCTGGCCACTGTGGGTCCGACGGCCGGTTCAGCTTCTGGGACAAAGATG
CCAGGACAAAGCTGAAGACCTCAGAGCAGCTGGACCAGCCGTGGCAGCGTGTGGCTTCAACCACAACGG
GAACATATTTGCCTATGCCTCCAGCTACGACTGGTCCAAGGGCATGAGTTTTATAATCCCCAAAAGAAA
AATTACATTTTCTGCGTAATGCAGCTGAAGAGCTAAAGCCAAGAATAAAAAAG

ACGCGTACGCGGCCGCTCGAGCAGAAACTCATCTCAGAAGAGGATCTGGCAGCAAATGATATCCTGGATT
ACAAGGATGACGACGATAAGGTTTAA



[View online »](#)

Protein Sequence: >RR202529 representing NM_001033708
 Red=Cloning site Green=Tags(s)

MSLFGTTSGFGTGGTSMFGSTTTDNHNPMKDIEVTSSPDDSIGCLSFSPPTLPGNFLIAGSWANDVRCWE
 VQDSGQTIPKAQQMHTGPVLDVCWSDDGSKVFTASCDKTAKMWDLNSNQAIQIAQHDAPVKTIHWIKAPN
 YSCVMTGSWDKTLKFWDTRSSNPMMVLQLPERCYADVIPMAVVATAERGLIVYQLENQPSFRRIESP
 LKHQHRCAIIFKDKQNKPTGFALGSIIEGRVAIHYINPPNPAKDNFTFKCHRNGTNTSAPQDIYAVNGIA
 FHPVHGLTATVGSDDRFSFWDKDARTKLTSEQLDQPVAACGFNHNGNIFAYASSYDWSKGHEFYNPQKK
 NYIFLRNAAEELKPRNKK

TRTRPLEQKLISEEDLAANDILDYKDDDDKV

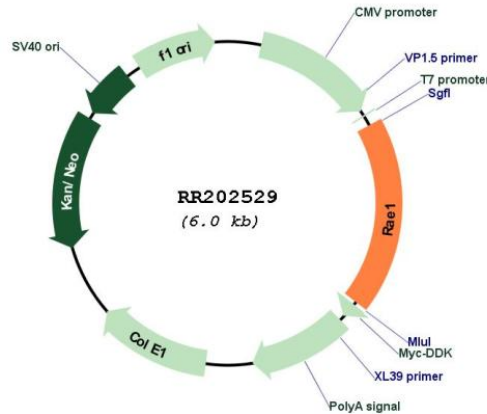
Restriction Sites:

Sgfl-MluI

Cloning Scheme:



Plasmid Map:



ACCN: NM_001033708

ORF Size:	1104 bp
OTI Disclaimer:	The molecular sequence of this clone aligns with the gene accession number as a point of reference only. However, individual transcript sequences of the same gene can differ through naturally occurring variations (e.g. polymorphisms), each with its own valid existence. This clone is substantially in agreement with the reference, but a complete review of all prevailing variants is recommended prior to use. More info
OTI Annotation:	This clone was engineered to express the complete ORF with an expression tag. Expression varies depending on the nature of the gene.
Components:	The ORF clone is ion-exchange column purified and shipped in a 2D barcoded Matrix tube containing 10ug of transfection-ready, dried plasmid DNA (reconstitute with 100 ul of water).
Reconstitution Method:	<ol style="list-style-type: none">1. Centrifuge at 5,000xg for 5min.2. Carefully open the tube and add 100ul of sterile water to dissolve the DNA.3. Close the tube and incubate for 10 minutes at room temperature.4. Briefly vortex the tube and then do a quick spin (less than 5000xg) to concentrate the liquid at the bottom.5. Store the suspended plasmid at -20°C. The DNA is stable for at least one year from date of shipping when stored at -20°C.
RefSeq:	NM_001033708.1 , NP_001028880.1
RefSeq Size:	1565 bp
RefSeq ORF:	1107 bp
Locus ID:	362281
UniProt ID:	Q3SWS8
Cytogenetics:	3q42
MW:	40.9 kDa
Gene Summary:	Plays a role in mitotic bipolar spindle formation. Binds mRNA. May function in nucleocytoplasmic transport and in directly or indirectly attaching cytoplasmic mRNPs to the cytoskeleton.[UniProtKB/Swiss-Prot Function]