

Product datasheet for **RR202520**

Fut9 (NM_053465) Rat Tagged ORF Clone

Product data:

Product Type: Expression Plasmids
Product Name: Fut9 (NM_053465) Rat Tagged ORF Clone
Tag: Myc-DDK
Symbol: Fut9
Vector: pCMV6-Entry (PS100001)
E. coli Selection: Kanamycin (25 ug/mL)
Cell Selection: Neomycin
ORF Nucleotide Sequence: >RR202520 representing NM_053465
Red=Cloning site Blue=ORF Green=Tags(s)

TTTTGTAATACGACTCACTATAGGGCGGCCGGAATTCGTCGACTGGATCCGGTACCGAGGAGATCTGCC
GCC**CGATCGCC**

ATGACCTCAACATCCAAAGGCATTCTTCGCCCATTTCTAATCGTCTGCATTATCCTGGGCTGCTTCGTGG
CATGTCTACTTATCTACATCAAGCCCACCAACAGCTGGGTCTTCAGTCCAATGGAGTCTGCAAGCTCTGT
GCTGAAAATGAAAATTTCTTCCAGGAAAACAGTATTATTTAATGAACTACTATTCTGGTTTGGGTG
TGGCCATTTGGGCAGACCTTTGACCTTACATCCTGCCAAGCCATGTTCAACATCCAAGGGTGCCATCTCA
CAACGGACCGCTCGTTGTACAACAAATCCCATGCGGTCTGATACACCACAGAGACATCAGCTGGGATCT
GACTAACTTACCTCAGCAGGCCAGGCCGCCCTTTCAGAAATGGATTTGGATGAACTTAGAGTCAACCCACT
CACACCCCAAAAGAGTGGCATTGAGCACTTGTCAACCTGACTCTAACTTATCGCCGTGATTCAGATA
TACAAGTGCCTTACGGCTTCTTGACGGTGAACAAGCCCTTTGTGTTGAAGTGCCAAGCAAAGAGAA
GTTAGTGTGCTGGTGTGAGTAACTGGAATCCCAGCATGCCAGGGTCAAGTATTACAACGAGCTCAGC
AAGAGTATTGAAATCCACACCTATGGGCAAGCATTGGAGAATATGTGAATGATAAAAATCTGATCCCA
CCATATCTACTTGTAAATTTTATCTTTCTTTGAAAACCAATTCACAAAGATTACATCACAGAAAAGCT
CTACAATGCATTTTGGCTGGTTCGGTACTGTTGTCCTGGGACCATCTAGGGAAAACATGAGAATTAT
ATTCCAGCTGATTCATTCATTCATGTGGAAGATTTAACTCACCCAGTGAGTTGGCAAAATATCTGAAGG
AGGTTGACAAAACAATAAGTTATATCTTAGTTACTTCAACTGGAGGAAGGATTTTACTGTAACCTCCC
ACGGTTTTGGGAATCACATGCATGCCTGGCATGCGATCATGTAAAAGGCATCAAGAATATAAGTCTGTT
GGCAATTTAGAGAAATGGTTTTGGAAT

ACGCGTACGCGGCCGCTCGAGCAGAAAACATCTCAGAAGAGGATCTGGCAGCAAATGATATCCTGGATT
ACAAGGATGACGACGATAAGGTTTAA



[View online »](#)

Protein Sequence: >RR202520 representing NM_053465
 Red=Cloning site Green=Tags(s)

MTSTSKGILRPFLIVCIIILGCFVACLLIYIKPTNSWVFSMPMESASSVLKMKNFFSRKTDYFNETTILVWV
 WPFQQTFDLTSCQAMFNIQGCHLTTDRSLYNKSHAVLIHHRDISWDLTNLPQARPPFQKWIWMNLESPT
 HTPQKSGIEHLFNLTLTYRRSDIQVPYGFLLTVSTSPFVFEVPSKEKLCVWVSNWNPEHARVKYNELS
 KSIEIHTYQAFGEYVNDKNLIPTISTCKFYLSFENSIHKDYITEKLYNAFLAGSVPVVVGPSRENYENY
 IPADSFIVHVEDFNPSSELAAYLKEVDKNNKLYLSYFNWRKDFTVNLPWFESHACLACDHVKRHQYKYSV
 GNLEKWFVN

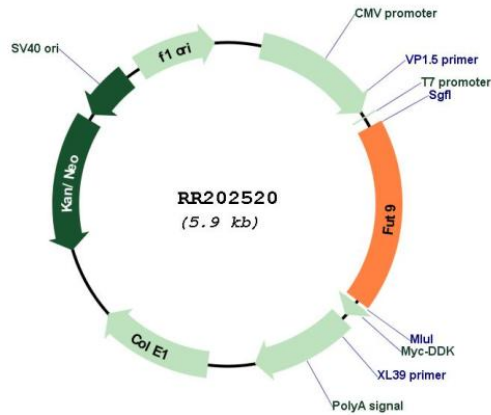
TRTRPLEQKLISEEDLAANDILDYKDDDDKV

Restriction Sites: SgfI-MluI

Cloning Scheme:



Plasmid Map:



ACCN: NM_053465

ORF Size:	1077 bp
OTI Disclaimer:	The molecular sequence of this clone aligns with the gene accession number as a point of reference only. However, individual transcript sequences of the same gene can differ through naturally occurring variations (e.g. polymorphisms), each with its own valid existence. This clone is substantially in agreement with the reference, but a complete review of all prevailing variants is recommended prior to use. More info
OTI Annotation:	This clone was engineered to express the complete ORF with an expression tag. Expression varies depending on the nature of the gene.
Components:	The ORF clone is ion-exchange column purified and shipped in a 2D barcoded Matrix tube containing 10ug of transfection-ready, dried plasmid DNA (reconstitute with 100 ul of water).
Reconstitution Method:	<ol style="list-style-type: none">1. Centrifuge at 5,000xg for 5min.2. Carefully open the tube and add 100ul of sterile water to dissolve the DNA.3. Close the tube and incubate for 10 minutes at room temperature.4. Briefly vortex the tube and then do a quick spin (less than 5000xg) to concentrate the liquid at the bottom.5. Store the suspended plasmid at -20°C. The DNA is stable for at least one year from date of shipping when stored at -20°C.
RefSeq:	NM_053465.1 , NP_445917.1
RefSeq Size:	2156 bp
RefSeq ORF:	1080 bp
Locus ID:	84597
UniProt ID:	Q99JB3
Cytogenetics:	5q21
MW:	42 kDa
Gene Summary:	catalyzes the last step of Lewis x biosynthesis; plays a critical role in the embryonic brain patterning and neurogenesis [RGD, Feb 2006]