

Product datasheet for **RR202508**

Bcl11b (NM_001108057) Rat Tagged ORF Clone

Product data:

Product Type:	Expression Plasmids
Product Name:	Bcl11b (NM_001108057) Rat Tagged ORF Clone
Tag:	Myc-DDK
Symbol:	Bcl11b
Synonyms:	Ctip2
Mammalian Cell Selection:	Neomycin
Vector:	pCMV6-Entry (PS100001)
E. coli Selection:	Kanamycin (25 ug/mL)



[View online »](#)

ORF Nucleotide Sequence:

>RR202508 representing NM_001108057
 Red=Cloning site Blue=ORF Green=Tags(s)

TTTTGTAATACGACTCACTATAGGGCGGCCGGGAATTCGTCGACTGGATCCGGTACCGAGGAGATCTGCC
 GCC**CGGATCGCC**

ATGGTGGGCGGCCCGACCTGACCTACTCACCTGTGGCCAGTGTGAGATGAACCTCCCGCTGGGGGACA
 TCCTGGTTTTATAGAGCACAAGAAGAAACAGTGTGGGGCCTGGGCTCCTGCTACGACAAGGACTGGA
 CAAGGGAAGCCCTCCGCCTTCTCTCGCTCTGAGCTCAGGAGAGTGTCTGAACAGTGGAGATCGGGATC
 CAGGTCACCCCGATGAAGATGACCATCTACTGTACCCACGAAAGGCATCTGTCCCAAGCAGGAGAACA
 TTGCAGGTAAGATGAGCCTTCCAGCTACATTTGCACAACATGTAAGCAGCCCTTCAACAGCGCTGGTT
 CCTGCTGCAACATGCGCAGAACACGCATGGCTTCCGCATCTACCTGGAGCCCGGGCCCGCAGCACCTCG
 CTCACGCCAGGCTACCATCCCGCCGCGCTCGGGCCGAGGCCGTGGCGCAGTCCCCTCATGAATT
 TCCTCGGGACAGCAATCCTTTCAACCTGCTGCGCATGACGGGCCCATCTGCGGGACCACCCGGCTT
 CGGAGAGGGCCGCTGCCGGTACGCCACCGCTTTCAGCCACCGCCACGCCATCACTTGGACCCACAC
 CGCCTCAGTGCAGAGGAGATGGGGCTCGTGGCCAGCACCCAGTGCCTTCGACCGAGTCAATGCGCCTGA
 ACCCATGGCCATAGACTCTCCCGCCATGGACTTCTCTCGCGGCTGCGAGAACTGGCCGGTAACAGCTC
 CACACCGCCGCGCTGTCCCGAGGCGTGGCAACCCTATGCACCGGCTGTGAACCTTTTCAGCCAGC
 CCCAAGTCCCGTTTCTCAGCACGCCACCGTGCACCCATGCCACGGGCACGCCGCCACCGCAGCCGC
 CTGCCAAGAGCAAGTCTGTGAGTTCTGCGGAAGACCTTCAAATTCAGAGCAATCTCATCGTGCACCG
 GCGCAGCCACAGGGCGAGAAGCCCTACAAGTCCAGCTGTGCGACCACGGTGTGCGAGGCGAGCAAG
 CTAAGCGCCACATGAAGACGCACATGCACAAGCGGGCTCGTGGCTGGCCGCTCAGACGATGGGCTT
 CGGCCCGCAGCTCCCGAGAGCCCGCACCGAGCTGCCAGGTGACCTCAAAGCGCCGATGGCGACTT
 CCGCCACCATGAGAGCGACCCATCTCTGGGACCGAGCCTGAGGACGACGAGGACGAGGAGGAGGAAGAA
 GAAGAGCTGCTGCTGGAGAATGAAAGCCGACCTGAGTCGAGCTTACGATGGACTCGGAGCTGGGCGTG
 GCCCGAGAATGGGGTGGTGTGCCACCGGGTGGCGGGCGGGGGTGCAGCTGCGGCTCTGGCAGA
 TGAGAAGGCGCTGGCATTGGGAAGGTGATGGAGGACGAGGGTGGGCGCACTGCCGAGTATGGGGAG
 AAGCGAGGCGCTTCTGAAGCGTGCAGGCGACGGGTGACACCGGAGCTGGTGGTGCAGGGATGCAG
 GTGCACCGGGCGAGTGAACGGGCTGGCGGGCTTCGCGCCAGGCGCAGAGCCCTTCCAGCGCTCTT
 CCCACGAAGCCCGACCGCTGCCAGCCCGGGCTTGGTGGTCTGCGCTACACGGGCCAAGCGCATC
 AAGGTGGAGAAGGACCTGGAGCTGCCACCGCCGCCCTCATCCATCCGAGAAGTGTACTCGCAGTGGC
 TCGTGGGCTACGCGGCTCGCGCACTTATGAAGACCGTTCCTGGGCTTACGGATGCGCGCCAGTC
 GCCTTTCGCCACGTCGTGCGAACATTCCTCTGAGAACGGCAGCCTGCGCTTCTCCACGCCACCCGGGAC
 CTGCTGGACGGCGGGTGTGGGGCGCAGTGGCACGGGAGCGGGGGCAGCACGCTCACCTGGGTGGCC
 CGGGTCTGGGCGGCCGAGCTCCAAGGAGGGCCCGCAGCGACAGTGGCAGTACTGCGCAAGGTCTT
 CAAAACTGTAGCAACCTGACGGTGCACCGGAGGACCCACCGGCGAGCGGCCCTTACAAGTGGAGCTG
 TGCAACTACGCGTGGCGCAGAGCAGCAAGCTTACGCGCCACATGAAGACGCACGGTCAATCGGCAAGG
 AGGTGTACCGTGGGATATCTGCCAGATGCCCTTCAAGTGTCTACAGTACCCTGGAGAAACACATGAAAA
 GTGGCACGGTGAACACTTGCTGACTAATGATGTCAAAATCGAGCAGGCTGAGAGGAGC

AGCGGACCGACGCTACGCGGCCGCTCGAGCAGAACTCATCTCAGAAGAGGATCTGGCAGCAAATGATATCC
TGGATTACAAGGATGACGACGATAAGGTTAA

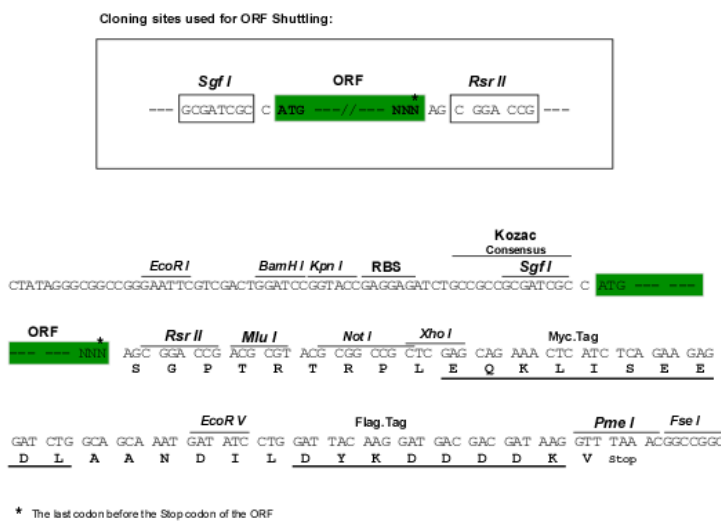
Protein Sequence: >RR202508 representing NM_001108057
Red=Cloning site Green=Tags(s)

MVGGPDPDLLTCGQCQMNFFPLGDILVFIHKKKQCGGLGSCYDKVLDKGSPPPSSRSELRRVSEPVEIGI
 QVTPDEDDHLLSPTKGIQPKQENIAGKDEPSSYICTTCKQPFNSAWFLLQHAQNTHGFRILEPGPASTS
 LTPRLTIPPLGPEAVAQSPLMNFLGDSNPFNLLRMTGPILRDHPGFGEGRLPPTPLFSPPRHHLDPH
 RL SAEEMGLVAQHPSAFDRVMRLNPM AIDSPAMDFSRRLRELAGNSSTPPPVSPPGRGNPMHRLLNPFQPS
 PKSPFLSTPPLPPMPTGTPPPQPPAKSKSCEFCKTTFKQSNLIVHRRSHTGEKPYKQLCDHACSQASK
 LKRHMKTHMKAGSLAGRSDDGLSAASSPEPGTSELPDGLKAADGDFRHHESDPSLGPEPEDEDEEEEEE
 EELLLENESRPESFSMDELGRGRENGGVPPGVAGAGAAAAALADEKALALGKVMEDAGLGALPQYGE
 KRGAFLKRAGDAGDTGAGCGDAGAPGAVNRRGGAFAPGAEPFALFPRKPAPLPSPLGGPALHAAKRI
 KVEKDLEPPAALIPSENVYSQWL VGYAASRHFMKDPFLGFTDARQSPFAT SSEHSSENGLRFSTPPGD
 LLDGGLSGRSGTASGGSTPHLGPGPGRPSSKEGRRSDTCEYCGKVFKNCSNLTVHRRSHTGERPYKCEL
 CNYACAQSSKLTRHMKTHGQIGKEVYRCDICQMPFSVYSTLEKHMKKWHGEHLLTNDVKIEQAERS

SGPTRTRPLEQKLI SEEDLAANDILDYKDDDDKV

Restriction Sites: SgfI-RsrII

Cloning Scheme:



ACCN: NM_001108057

ORF Size: 2298 bp

OTI Disclaimer: The molecular sequence of this clone aligns with the gene accession number as a point of reference only. However, individual transcript sequences of the same gene can differ through naturally occurring variations (e.g. polymorphisms), each with its own valid existence. This clone is substantially in agreement with the reference, but a complete review of all prevailing variants is recommended prior to use. [More info](#)

OTI Annotation: This clone was engineered to express the complete ORF with an expression tag. Expression varies depending on the nature of the gene.

Components: The ORF clone is ion-exchange column purified and shipped in a 2D barcoded Matrix tube containing 10ug of transfection-ready, dried plasmid DNA (reconstitute with 100 ul of water).

- Reconstitution Method:**
1. Centrifuge at 5,000xg for 5min.
 2. Carefully open the tube and add 100ul of sterile water to dissolve the DNA.
 3. Close the tube and incubate for 10 minutes at room temperature.
 4. Briefly vortex the tube and then do a quick spin (less than 5000xg) to concentrate the liquid at the bottom.
 5. Store the suspended plasmid at -20°C. The DNA is stable for at least one year from date of shipping when stored at -20°C.

RefSeq: [NM_001108057.1](#), [NP_001101527.1](#)

RefSeq Size: 3740 bp

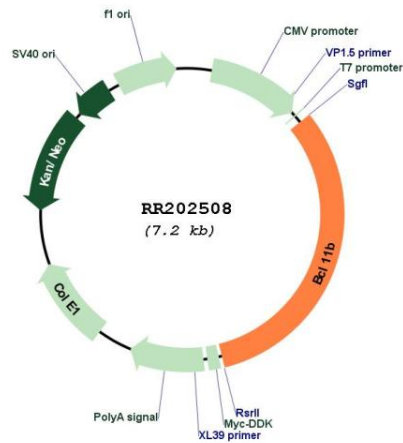
RefSeq ORF: 2301 bp

Locus ID: 314423

Cytogenetics: 6q32

MW: 82.1 kDa

Product images:



Circular map for RR202508