

Product datasheet for **RR202487**

Gpr160 (NM_001025147) Rat Tagged ORF Clone

Product data:

| | |
|---------------------------|--|
| Product Type: | Expression Plasmids |
| Product Name: | Gpr160 (NM_001025147) Rat Tagged ORF Clone |
| Tag: | Myc-DDK |
| Symbol: | Gpr160 |
| Mammalian Cell Selection: | Neomycin |
| Vector: | pCMV6-Entry (PS100001) |
| E. coli Selection: | Kanamycin (25 ug/mL) |
| ORF Nucleotide Sequence: | >RR202487 representing NM_001025147 Red=Cloning site Blue=ORF Green=Tags(s) |

TTTTGTAATACGACTCACTATAGGGCGGCCGGAATTCGTCGACTGGATCCGGTACCGAGGAGATCTGCC
GCC**CGATCGCC**

ATGACAGCTCTTCCTTCAAAGAAGTCTCTTTTCAGTACCAGTCACATCAGGCTCCGCGGTCCCTGGATG
CCACCTGTCTGCTGCTGTTGATTATACTTGGGAAAGTGTGTTAAACGTCCTCATCCTCAGAGTGA
GAAAGACACCTCGTGGAGCTTTATGGAGTACTTCTGCTTTTCACTAGCACTTGTGATCTCCTGCTGTTG
GTAAACATTTCTGTTCTGACCTACTTCAGGGACTTTGTAGTCTAGGTATTAGGTTTACTAACTACCACA
TATGCTGCTCACACAGATCGTTTCCTTCGCTTACGGCTTCTTGATTATCCAGTTTGTCCCTGGCTTG
TATAGACTACTGGTGAATCTGTCCAGAGCCACCAAGCCTTCATCTAGGTGGCAAAGTTACTTTATTTG
TTGACAGTCATTTAACTTGGATCTCAGTCCTTGCTTATGTTTTGGGTGATCCAGCCATCTCGGCAAGCC
TAAAGACACACAAGACTTCTGTGAACCAATGTCCTCCTATGTCAGCACTCAGAGTCACTGGCTATCACT
GTCTATGTTGATGATTTTATCTGTGGCCTTTCTGATTTTCATGGCAAGAAGTTGTTGCCCTGATACAGGCT
ATCCGGATAGCATCCTACAAGAACAAGGCTGTCTCTATTTTCTTTCCACCCCATACCAGTTACTG
TGAGCCCCAGAGCAGTGTCTTGCCAGGCTCATTGTGTGCTTTCTTGGTACCTGGTTTCCCTTTGTAGC
ACTTCAGGTCCTCATCCTCTCACTCAGAGTTCAGATTCCAGCGTACATAGAAATGAACGTCCCCTGGCTG
TACTTCGTC AACAGTTTTCTCATTGCTGCAGTTTATTGGTTAACTGCCACAAGCTTTATTGGAGAGACG
GCATGTTCCCTGTGGATCCTTTCATCAACTGAAATGCTGCTTTGTTCCGGTCCACAGACTTAAGCAAGT
GGAGAGGCCCATGTCTATAATCATCTGT

ACGCGTACGCGGCCGCTCGAGCAGAACTCATCTCAGAAGAGGATCTGGCAGCAAATGATATCCTGGATT
ACAAGGATGACGACGATAAGGTTTAA



[View online »](#)

Protein Sequence: >RR202487 representing NM_001025147
 Red=Cloning site Green=Tags(s)

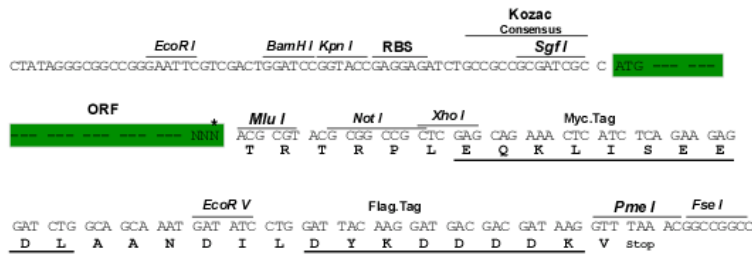
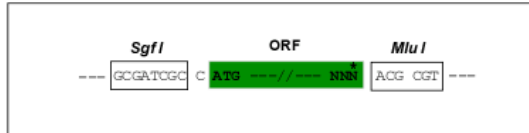
MTALPSKNCSFQYQSHQAPRSLDATCLLLLIIILGKVLLNVLILRVKRKDTSWSFMEYFCFSLALVDLLLL
 VNISVLTYFRDFVVLGIRFTNYHICLLTQIVSFAYGFLHYPVCSLACIDYWCNLSRATKPPSSRWQKLLYL
 LTVILTWISVLAYVLGDPAISASLKTHKTSVNQCPSTQSHWLSLMLMILSVAFLISWQEVVALIQA
 IRIASYKNKAVLYFPFPHTSYTVSPRAVLLPRLIVCFLGTWFFVALQVLILSLRVQIPAYIEMNVPWL
 YFVNSFLIAAVYWFNCHKLYWRDGMFPVDPFINWKCCFVPVHRLKQVERPMSIIC

TRTRPLEQKLISEEDLAANDILDYKDDDDKV

Restriction Sites: SgfI-MluI

Cloning Scheme:

Cloning sites used for ORF Shuttling:



* The last codon before the Stop codon of the ORF

ACCN: NM_001025147

ORF Size: 1008 bp

OTI Disclaimer: The molecular sequence of this clone aligns with the gene accession number as a point of reference only. However, individual transcript sequences of the same gene can differ through naturally occurring variations (e.g. polymorphisms), each with its own valid existence. This clone is substantially in agreement with the reference, but a complete review of all prevailing variants is recommended prior to use. [More info](#)

OTI Annotation: This clone was engineered to express the complete ORF with an expression tag. Expression varies depending on the nature of the gene.

Components: The ORF clone is ion-exchange column purified and shipped in a 2D barcoded Matrix tube containing 10ug of transfection-ready, dried plasmid DNA (reconstitute with 100 ul of water).

Reconstitution Method:

1. Centrifuge at 5,000xg for 5min.
2. Carefully open the tube and add 100ul of sterile water to dissolve the DNA.
3. Close the tube and incubate for 10 minutes at room temperature.
4. Briefly vortex the tube and then do a quick spin (less than 5000xg) to concentrate the liquid at the bottom.
5. Store the suspended plasmid at -20°C. The DNA is stable for at least one year from date of shipping when stored at -20°C.

RefSeq: [NM_001025147.1](#), [NP_001020318.1](#)

RefSeq Size: 1630 bp

RefSeq ORF: 1011 bp

Locus ID: 499588

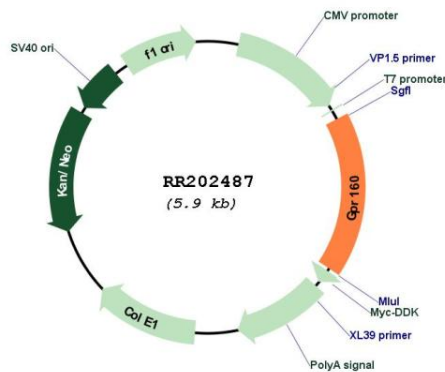
UniProt ID: [Q66H29](#)

Cytogenetics: 2q24

MW: 38.8 kDa

Gene Summary: Orphan receptor.[UniProtKB/Swiss-Prot Function]

Product images:



Circular map for RR202487