

Product datasheet for RR202459L3

Cacng8 (NM_080696) Rat Tagged Lenti ORF Clone

Product data:

Product Type:	Expression Plasmids
Product Name:	Cacng8 (NM_080696) Rat Tagged Lenti ORF Clone
Tag:	Myc-DDK
Symbol:	Cacng8
Mammalian Cell Selection:	Puromycin
Vector:	pLenti-C-Myc-DDK-P2A-Puro (PS100092)
E. coli Selection:	Chloramphenicol (34 ug/mL)
ORF Nucleotide Sequence:	The ORF insert of this clone is exactly the same as(RR202459).
Restriction Sites:	Sgfl-MluI
Cloning Scheme:	

Cloning sites used for ORF Shuttling:



* The last codon before the Stop codon of the ORF.

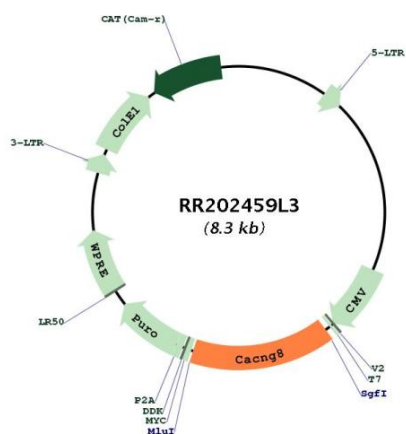
ACCN:	NM_080696
ORF Size:	1263 bp



[View online »](#)

OTI Disclaimer:	The molecular sequence of this clone aligns with the gene accession number as a point of reference only. However, individual transcript sequences of the same gene can differ through naturally occurring variations (e.g. polymorphisms), each with its own valid existence. This clone is substantially in agreement with the reference, but a complete review of all prevailing variants is recommended prior to use. More info
OTI Annotation:	This clone was engineered to express the complete ORF with an expression tag. Expression varies depending on the nature of the gene.
Components:	The ORF clone is ion-exchange column purified and shipped in a 2D barcoded Matrix tube containing 10ug of transfection-ready, dried plasmid DNA (reconstitute with 100 ul of water).
Reconstitution Method:	<ol style="list-style-type: none">1. Centrifuge at 5,000xg for 5min.2. Carefully open the tube and add 100ul of sterile water to dissolve the DNA.3. Close the tube and incubate for 10 minutes at room temperature.4. Briefly vortex the tube and then do a quick spin (less than 5000xg) to concentrate the liquid at the bottom.5. Store the suspended plasmid at -20°C. The DNA is stable for at least one year from date of shipping when stored at -20°C.
RefSeq:	NM_080696.2 , NP_542427.1
RefSeq Size:	1266 bp
RefSeq ORF:	1266 bp
Locus ID:	140729
UniProt ID:	Q8VHW5
Cytogenetics:	1q12
Gene Summary:	Voltage-dependent calcium channels couple membrane depolarization in a number of cellular processes. These activities are regulated by distinct channels composed of the pore-forming alpha-1 subunit and the modulatory beta, alpha-2/delta and gamma subunits. The protein encoded by this gene represents one of the gamma subunits. It is an integral membrane protein that is thought to stabilize the calcium channel in an inactive (closed) state. This gene is located in a cluster with two similar gamma subunit-encoding genes on chromosome 1. The mRNA for this gene is believed to initiate translation from a non-AUG (CUG) start codon. [provided by RefSeq, Jul 2008]

Product images:



Circular map for RR202459L3