

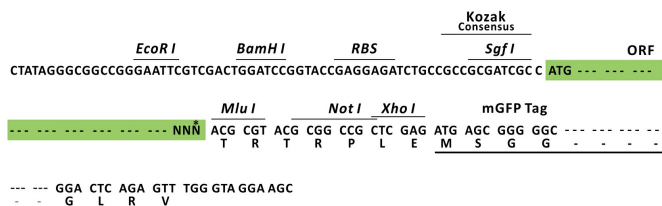
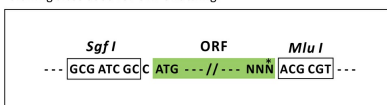
Product datasheet for RR202405L4

Cldn15 (NM_001107135) Rat Tagged Lenti ORF Clone

Product data:

Product Type:	Expression Plasmids
Product Name:	Cldn15 (NM_001107135) Rat Tagged Lenti ORF Clone
Tag:	mGFP
Symbol:	Cldn15
Mammalian Cell Selection:	Puromycin
Vector:	pLenti-C-mGFP-P2A-Puro (PS100093)
E. coli Selection:	Chloramphenicol (34 ug/mL)
ORF Nucleotide Sequence:	The ORF insert of this clone is exactly the same as(RR202405).
Restriction Sites:	Sgfl-MluI
Cloning Scheme:	

Cloning sites used for ORF Shuttling:



* The last codon before the Stop codon of the ORF.

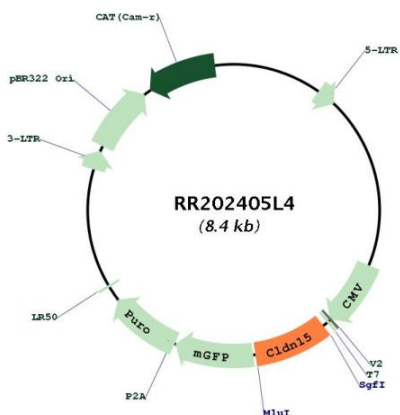
ACCN:	NM_001107135
ORF Size:	681 bp



[View online >](#)

OTI Disclaimer:	The molecular sequence of this clone aligns with the gene accession number as a point of reference only. However, individual transcript sequences of the same gene can differ through naturally occurring variations (e.g. polymorphisms), each with its own valid existence. This clone is substantially in agreement with the reference, but a complete review of all prevailing variants is recommended prior to use. More info
OTI Annotation:	This clone was engineered to express the complete ORF with an expression tag. Expression varies depending on the nature of the gene.
Components:	The ORF clone is ion-exchange column purified and shipped in a 2D barcoded Matrix tube containing 10ug of transfection-ready, dried plasmid DNA (reconstitute with 100 ul of water).
Reconstitution Method:	<ol style="list-style-type: none">1. Centrifuge at 5,000xg for 5min.2. Carefully open the tube and add 100ul of sterile water to dissolve the DNA.3. Close the tube and incubate for 10 minutes at room temperature.4. Briefly vortex the tube and then do a quick spin (less than 5000xg) to concentrate the liquid at the bottom.5. Store the suspended plasmid at -20°C. The DNA is stable for at least one year from date of shipping when stored at -20°C.
RefSeq:	NM_001107135.2 , NP_001100605.1
RefSeq Size:	684 bp
RefSeq ORF:	684 bp
Locus ID:	304388
UniProt ID:	D3ZQJ0
Cytogenetics:	12q12
Gene Summary:	Claudins function as major constituents of the tight junction complexes that regulate the permeability of epithelia. While some claudin family members function as impermeable barriers, others mediate the permeability to ions and small molecules. Often, several claudin family members are coexpressed and interact with each other, and this determines the overall permeability. CLDN15 forms tight junctions that mediate the paracellular transport of small monovalent cations along a concentration gradient, due to selective permeability for Na(+), Li(+) and K(+) ions, but selects against Cl(-) ions. Plays an important role in paracellular Na(+) transport in the intestine and in Na(+) homeostasis. Required for normal Na(+)-dependent intestinal nutrient uptake (By similarity).[UniProtKB/Swiss-Prot Function]

Product images:



Circular map for RR202405L4