

Product datasheet for **RR202402**

Taf7 (NM_001107394) Rat Tagged ORF Clone

Product data:

Product Type: Expression Plasmids
 Product Name: Taf7 (NM_001107394) Rat Tagged ORF Clone
 Tag: Myc-DDK
 Symbol: Taf7
 Vector: pCMV6-Entry (PS100001)
 E. coli Selection: Kanamycin (25 ug/mL)
 Cell Selection: Neomycin
 ORF Nucleotide Sequence: >RR202402 representing NM_001107394
 Red=Cloning site Blue=ORF Green=Tags(s)

TTTTGTAATACGACTCACTATAGGGCGGCCGGAATTCGTCGACTGGATCCGGTACCGAGGAGATCTGCC
 GCCCGCATCGCC

ATGAGTAAGAGCAAAGATGATGCACCTCATGAGCTAGAGAGCCAGTTTATCTTACGGTTGCCCCAGAAT
 ATGCCGCTACTGTGAGGAGGGCAGTGCAGTCTGGGCACGTCAACCTGAAAGATAGACTGACCATTTGAGTT
 ACACCTGATGGCGTTCATGGGATTGTCTAGAGTGGATAGAGTGGCCCTGGCTGCAAAATTTGGTAGATTTG
 CCGTGTGTTACGGAGAGCTTGAACCATTGATAAAAAACCTTTTACAAGACAGCTGATATCTCTCAGA
 TGCTTGTAGCCACAGTAGATGGTATCTATACCCTCTGTGGAGGAGCCAGCTGCTACTGCTGATCCCAA
 AGCAAACAAGAAAAAGATAAGGACAAAGAGAAAAATTTGTTTGAACCATGGAATTAATCTACCTCTA
 AAAATGTGAGAAAGAGAAGGTTCCGGAAGACAGCAAAGAAGAAGTACATTGAATCTCCAGATGTGGAAA
 AAGAAGTAAAGCGGCTGCTGAGTACAGATGCAGAAGCTGTCAGTACTCGTTGGGAGATAATTGCTGAAGA
 TGAACAAGGAGGCAGAAAATCAAGGCCTTGATATCTCTCTCCTGGAATGTCTGGCCACAGGCAGGGC
 CATGACTCACTAGAGCATGATGAGCTTCGAGAGATATTCAATGACCTCAGCAGCAGCAGCAAGATGAAG
 AAGATGTAACATCATTGACTGAAGAGGATCTGGAGAGACAGCTACAGGACAAGCTAAATGAGTCAGA
 TGAACAACACCAAGAAAATGAAGGAACCAATCAGTTGGTTATGGGGATTCAGAAGCAGATTGATAATATG
 AAAGGCAAGCTTCAAGAAACCAAGACAGAGCAAAGCGCCAGGAGGATCTCATATGAAGGTAGAAAACC
 TGGCTCTGAAGAACAGGTTTCAAGCTGTTCTGGATGAGCTCAAACAGAAGGAAGCCGGGAAAAGGAGCA
 GCTTAGCTCTTTGCAAGAAGAGCTGGAATCACTTCTGGAGAAG

ACGCGTACGCGGCCGCTCGAGCAGAACTCATCTCAGAAGAGGATCTGGCAGCAATGATATCCTGGATT
 ACAAGGATGACGACGATAAGGTTTAA



[View online »](#)

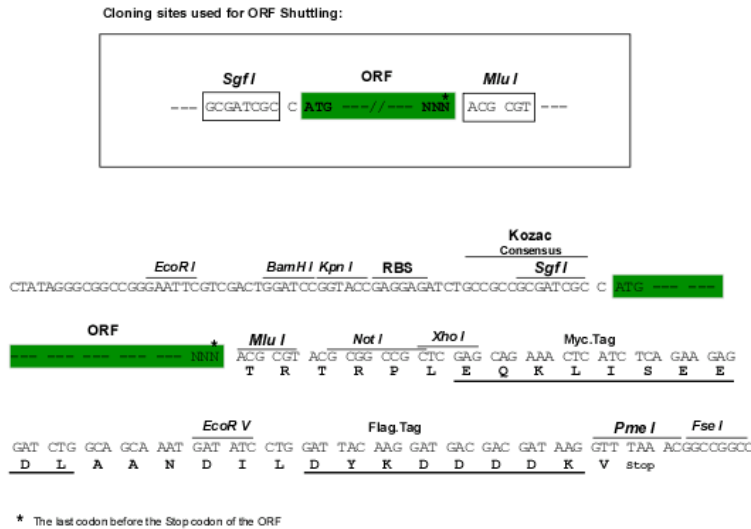
Protein Sequence: >RR202402 representing NM_001107394
 Red=Cloning site Green=Tags(s)

MSKSKDDAPHELESQFILRLPPEYAATVRRAVQSGHVNLKDRLSIELHPDGRHGI VRVDRVPLAAKLVDL
 PCVTESLKTIDKKTFFYKTADISQMLVATVDGDL YPPVEEPAATADPKANKKKDKDKEKFFVWNHGITLPL
 KNVRKRFRKTKAKKYYIESPDVEKEVKRLLSTDAEAVSTRWEIIAEDETKEAENQGLDISSPGMSGHRQG
 HDSL EHDDELREIFNDLSSSEDEEDVNIIDTEEDLERQLQDKL NESDEQHQENEGTNQLVMGIQKQIDNM
 KGKLQETQDRAKRQEDLIMKVENLALKNRFQAVLDELKQKEDREKEQLSSLQEELLESLEK

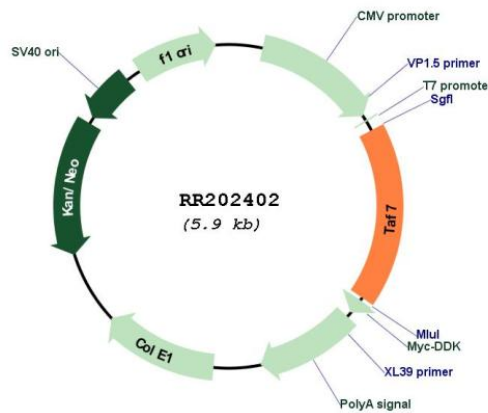
TRTRPLEQKLISEEDLAANDILDYKDDDDKV

Restriction Sites: SgfI-MluI

Cloning Scheme:



Plasmid Map:



ACCN: NM_001107394

ORF Size:	1023 bp
OTI Disclaimer:	The molecular sequence of this clone aligns with the gene accession number as a point of reference only. However, individual transcript sequences of the same gene can differ through naturally occurring variations (e.g. polymorphisms), each with its own valid existence. This clone is substantially in agreement with the reference, but a complete review of all prevailing variants is recommended prior to use. More info
OTI Annotation:	This clone was engineered to express the complete ORF with an expression tag. Expression varies depending on the nature of the gene.
Components:	The ORF clone is ion-exchange column purified and shipped in a 2D barcoded Matrix tube containing 10ug of transfection-ready, dried plasmid DNA (reconstitute with 100 ul of water).
Reconstitution Method:	<ol style="list-style-type: none">1. Centrifuge at 5,000xg for 5min.2. Carefully open the tube and add 100ul of sterile water to dissolve the DNA.3. Close the tube and incubate for 10 minutes at room temperature.4. Briefly vortex the tube and then do a quick spin (less than 5000xg) to concentrate the liquid at the bottom.5. Store the suspended plasmid at -20°C. The DNA is stable for at least one year from date of shipping when stored at -20°C.
RefSeq:	NM_001107394.2 , NP_001100864.1
RefSeq Size:	1796 bp
RefSeq ORF:	1026 bp
Locus ID:	307485
Cytogenetics:	18p11
MW:	39.1 kDa