

Product datasheet for **RR202393**

Andpro (NM_012718) Rat Tagged ORF Clone

Product data:

Product Type: Expression Plasmids
Product Name: Andpro (NM_012718) Rat Tagged ORF Clone
Tag: Myc-DDK
Symbol: Andpro
Synonyms: Crp1; RATANDPRO
Vector: pCMV6-Entry (PS100001)
E. coli Selection: Kanamycin (25 ug/mL)
Cell Selection: Neomycin
ORF Nucleotide Sequence: >RR202393 representing NM_012718
Red=Cloning site Blue=ORF Green=Tags(s)

TTTTGTAATACGACTCACTATAGGGCGCCGGAATTCGTCGACTGGATCCGGTACCGAGGAGATCTGCC
GCC**CGATCGCC**

ATGTGCAAACCTACATGGCACACTGCTCTACTGGCCATCTTTGCTCTGTTTCTGAATTCAGCCATG
CAACTGCAAACGTACCAGGAGAGGTATGGAAATTTTTGAGAAAACTTCATAGACAAAAACAACTGAA
GGATGTATATGATGCTTCAAATATCTTTACAACACGCACAGTGTGACACATATCTCAGCAACATAAAA
AATGAGTCATTCACCATGAACATATGGGGATTTGGTGAAATTGAAATGGTTAAAACCAAATGTAGAAAGA
TTGATTCTGACTTCTACAAATGTTCTTTCCAGAGGGAATTCTATAACCTAAAGCGGACTCCTGGCGAAAC
AATGTACTATATCATTGCCTGGAAGCGTCAGATGCAGGAAGCTCCTATCTAACTGGACAACGTCCC
TTCGAAGAACAACAGAACAGCTGAAGAGAGAAATATGTTACTTTGTAGTGTATCCTGACTATATTGAGC
AAAATATACATGCTGTAAGATTCGATTGTTATACAAA

ACGCGTACGCGGCGCTCGAGCAGAACTCATCTCAGAAGAGGATCTGGCAGCAAATGATATCCTGGATT
ACAAGGATGACGACGATAAGGTTTAA

Protein Sequence: >RR202393 representing NM_012718
Red=Cloning site Green=Tags(s)

MCKTLHGTL LLLAIFVLFLNFSHATAKRTRRGMEIFEKNFIDKNLKD VYDVF KYLYNTHSADTYLSN IK
NESFTMNIWGFGEIEMVTKCRKIDSDFYKCSFQREFYNLKRTPGETMYIISLPGSVRCRKLKSLDNCP
FEEQTEQLKREICYFVVYPDYIEQNIHAVRFDCYK

TRTRPLEQKLISEEDLAANDILDYKDDDDKV

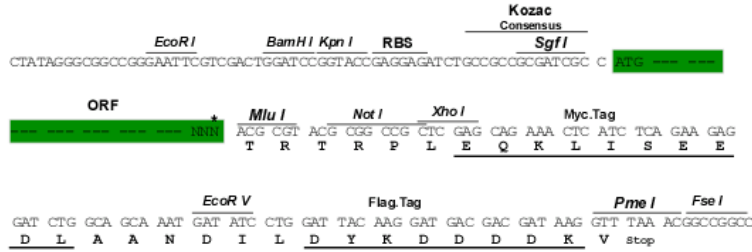
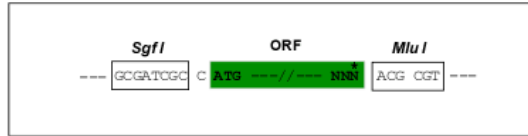
Restriction Sites: SgfI-MluI



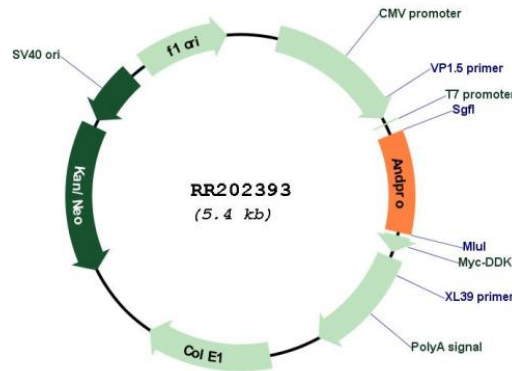
[View online »](#)

Cloning Scheme:

Cloning sites used for ORF Shuttling:



* The last codon before the Stop codon of the ORF

Plasmid Map:

ACCN: NM_012718

ORF Size: 528 bp

OTI Disclaimer: The molecular sequence of this clone aligns with the gene accession number as a point of reference only. However, individual transcript sequences of the same gene can differ through naturally occurring variations (e.g. polymorphisms), each with its own valid existence. This clone is substantially in agreement with the reference, but a complete review of all prevailing variants is recommended prior to use. [More info](#)
OTI Annotation: This clone was engineered to express the complete ORF with an expression tag. Expression varies depending on the nature of the gene.

Components:	The ORF clone is ion-exchange column purified and shipped in a 2D barcoded Matrix tube containing 10ug of transfection-ready, dried plasmid DNA (reconstitute with 100 ul of water).
Reconstitution Method:	<ol style="list-style-type: none">1. Centrifuge at 5,000xg for 5min.2. Carefully open the tube and add 100ul of sterile water to dissolve the DNA.3. Close the tube and incubate for 10 minutes at room temperature.4. Briefly vortex the tube and then do a quick spin (less than 5000xg) to concentrate the liquid at the bottom.5. Store the suspended plasmid at -20°C. The DNA is stable for at least one year from date of shipping when stored at -20°C.
RefSeq:	<u>NM_012718.2</u> , <u>NP_036850.1</u>
RefSeq Size:	824 bp
RefSeq ORF:	531 bp
Locus ID:	25030
UniProt ID:	<u>P22282</u>
Cytogenetics:	3q41
MW:	21.1 kDa
Gene Summary:	expression is induced by androgen; expressed exclusively in ventral prostate [RGD, Feb 2006]