

Product datasheet for **RR202381**

Ankzf1 (NM_001014219) Rat Tagged ORF Clone

Product data:

Product Type:	Expression Plasmids
Product Name:	Ankzf1 (NM_001014219) Rat Tagged ORF Clone
Tag:	Myc-DDK
Symbol:	Ankzf1
Synonyms:	RGD1359242
Mammalian Cell Selection:	Neomycin
Vector:	pCMV6-Entry (PS100001)
E. coli Selection:	Kanamycin (25 ug/mL)



[View online »](#)

ORF Nucleotide
Sequence:

>RR202381 representing NM_001014219
Red=Cloning site Blue=ORF Green=Tags(s)

TTTTGTAATACGACTCACTATAGGGCGGCCGGGAATTCGTCGACTGGATCCGGTACCGAGGAGATCTGCC
GCC**CGGATCGCC**

ATGTTGCCAGCTCCACGTGCAGCCCCAGTCCCTGCCTCGTTCCTGTTGACCCTCAACGGGGAAGCTC
CACTTGTTCGGGGCCTGAGCCTGGTGAAGCAAGCTCCCGGGAGGCTCTGGCCTGGGCGCCGCTACTTC
CTGTCCAGGAGAGAACAAGCTCAGGGAGAAAAGTATCTCCATGTTCTCTGGATATTTAGATAAATTA
TTTTGTTGAGCCTGTGACCAGGTCTTCCAGAACCACAGGAACAGAGAGAACATTATAAACTTGATTGGC
ATCGCTTTAACCTAAAACAACGTCTCAAGAATAAGCCTCTCTATCTGCTTCAGACTTTGAAAGGCAAAG
CTCCAGAGGAGATCTTCCAGCATCTCAGGATCAGAAGACTCAGACTCAGCCAGTGAAGAGGACTTGCTG
ACACTGGATGAGGAGAGGGCTGAATCTGAAAAACCAACCGACCCCTGGATTCTACCCACATCGGGTCC
TTTTCAGAAACGCCAGGGCCAGTTTCTTTATGCCTATCGTTGTGTCTAGGCCCTCACCAGATTCCTCC
AGAAAAGGCAGAATTGCTGCTACAAAACCTGCAAAATGGAGGTCCAGACACTACGTGGTCTCATGGCT
GCAGCTGGGCATTTTGTGCTGGTGCCATTTTCCAAGGAAGAGAAGTGGTGGCACACAAAACCTTTCACCGTT
ACACTGTGCGGGCCAAGCGGGGCACAGCCAGGGCCTTCAGGATGCCAGGGTAGGGCATCCCGCTCTGC
TGGAGCCAACCTTGAGGCGTTACAATGAAGCCATGCTCTACAAGGATGTTCTGACCTGCTGGCAGGGCCA
ACCTGGTCCAAAGCACTAGGAGAGGCAGAAACAATACTGCTGCATGCCACGCTCTGGCCGGTCTTGT
TCTTTGGAGGCCAAGGGGCACCCCTACAAGGAGTGATTTCCGACTTTGGGATATCCCTCTCACCACCCG
CAGACCACCTTTTGGAGAGCTTCAGCGTGTACTCCATAAGCTGACCACCTTGACGGTGTATGATGAAGAC
CCTCGAAGAAATGGTCAGATTTCACTCTCTGAGACACTGCAAAACAGTGAGAGAAGAGAGGAAAAGGG
ATACTGAGAAAAGAAAAACAAGGTCCCTAGTGATGCAAATAAGGCACCTTGGGCAGGATGAAGAACCCT
CAAACAAGGTTCCGAGTCTCAGGAAGAAGATGGCTCCGAAGTAGAGTTGGAGCTAGTAGACTGACACTG
GGGACCCTGGATCTTCTGTAATTTGAAGTATTGCCAAGCGGAGGAAGAAGAGGAAAAAGAGGAGAGAA
GTCAAAAGCAGCAATGTGGGGCACATGGGCCCTTCTTCAGCAACCTCAAGATGAGCCATTCTCACAGCC
AACCCAAGTGGTTGCAACCCCATTTGGACACTTTGGTCGATGAGGCCAAAGCCCTGGTCAACCAGAGCTC
TGGGATATGCTTCTAGCTGCTTGTGCTGCTGGGAAGTTGAGGTGCTAAAGCTGCAGCTAGCCACTGGGC
CTGTAGACCCTGGAGTTATGTCCTACTCAGTGCCCTTTGGGCTCTGGTGGCTTACTCTCTGCTGATGC
AGCAGCCGAGCTGGAAGAGGCTTAGTAGTTCGTTTGTGTTGGAGGCAGGTGCTGACCCCACTGTGCAT
GACTCTAGGGCTCGGCCACCTTATACTGTAGCAGCTGACAGATCAACCGTAATGAATTCGGAGGTTCA
TGGAGAAGAATCTTGATGCTTATGATTACAGCAAGGCTCGGGTGCCAGGGCCATTGACTCAAGAAATGGA
GGCCCGCAGGCTACAAGGAAAAAGGAGCAGAAGGCAGCTCGACGGCAGCGGGAGCAACAGCAGCGGAAG
CAGAGGGAACAGGAAGAACAGGAGCAAGAGGAGCGAAGGCGGTTTGTGCCCTCAGTGACCGAGAGAAGA
GAGCTCTGGCTGCAGAGCGCCGACTTGTGCCAGTTGGGAGCCCTAGCCCTCCAGTTCCTGACTCTGC
AGTTGTCAATGCTGGCGCTGCTGGAGTTGTGGTGTGTCCTCCAAGGCCTATTCCCTTCACTACCTC
GATTTCTTTTCTGCTCCACACGTTGCCTTCGAGACCATCGCAGTCAGGCAGGGAGGCCGTCATCA

AG**CGGACCG**ACGCGTACGCGCCGCTCGAGCAGAACTCATCTCAGAAGAGGATCTGGCAGCAAATGATATCC
TGGATTACAAGGATGACGACGATAAGGTTTAA

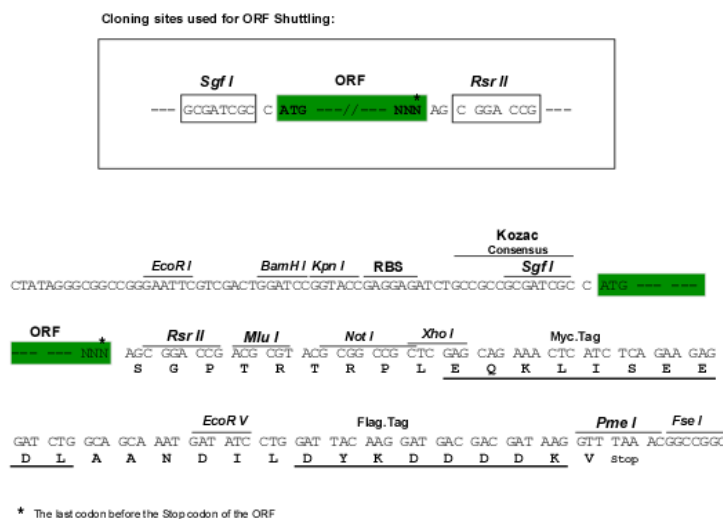
Protein Sequence: >RR202381 representing NM_001014219
Red=Cloning site Green=Tags(s)

MLPAPRAAPVPASVSLTLNGEAPLVRGLSLVSQAPGEALAWAPRTSCPGENTSSGRKVSPCSLDISDKL
 FCSACDQVFQNHQEQREHYKLDWHRFNLKQRLKNKPLL SASDFERQSSRGDLSISGSESDSASEEDLL
 TLDEERAESEKPNRPPGFYPHRVLFRNAQGQFLYAYRCVLGPHQIPPEKAELLQNLQNGGPRHYVVLMA
 AAGHFAGAIFQGREVVAKHTFHRYTVRAKRGT AQGLQDAQGRASRSAGANLRRYNEAML YKDVRDLLAGP
 TWSKALGEAETILLHAPRSGRSLFFGGQGAPLQRSDFRLWDIPLTTRRPTFGELQRVLHKLTTLLQVYDED
 PREMVRFHSPETHCKPVREERKRDTEKEKTKVPSDANKALGQDEEPLKQGSSEQEEEDGSEVELELVELTL
 GTLDLREFEVLPKRRKRKKKERSQKQCGAHGPLLQQPQDEPF SQPTQVVATPLDTLVDEAKAPGQPEL
 WDLLAACRAGEVEVLKQLATGPVDPGVMSLLSAPLGSGGFTLLHAAAAGRGLVVRLLEAGADPTVH
 DSRARPPYTVAADRSTRNEFRFMEKNLDAYDISKARVPGPLTQEMEARQATRKKEQKAARRQREQQQRK
 QREQEEQEERRRFAALSDREKRALAAERLAAQLGAPSPVPDSAVVNAGRCWSCGVSLQGLIPFHYL
 DFSFCSTRCLRDHRSQAGRPS

SGPTRTRPLEQKLI SEEDLAANDILDYKDDDDKV

Restriction Sites: SgfI-RsrII

Cloning Scheme:



ACCN: NM_001014219

ORF Size: 2166 bp

OTI Disclaimer: The molecular sequence of this clone aligns with the gene accession number as a point of reference only. However, individual transcript sequences of the same gene can differ through naturally occurring variations (e.g. polymorphisms), each with its own valid existence. This clone is substantially in agreement with the reference, but a complete review of all prevailing variants is recommended prior to use. [More info](#)

OTI Annotation: This clone was engineered to express the complete ORF with an expression tag. Expression varies depending on the nature of the gene.

Components: The ORF clone is ion-exchange column purified and shipped in a 2D barcoded Matrix tube containing 10ug of transfection-ready, dried plasmid DNA (reconstitute with 100 ul of water).

Reconstitution Method:

1. Centrifuge at 5,000xg for 5min.
2. Carefully open the tube and add 100ul of sterile water to dissolve the DNA.
3. Close the tube and incubate for 10 minutes at room temperature.
4. Briefly vortex the tube and then do a quick spin (less than 5000xg) to concentrate the liquid at the bottom.
5. Store the suspended plasmid at -20°C. The DNA is stable for at least one year from date of shipping when stored at -20°C.

RefSeq: [NM_001014219.1](#), [NP_001014241.1](#)

RefSeq Size: 2702 bp

RefSeq ORF: 2169 bp

Locus ID: 363255

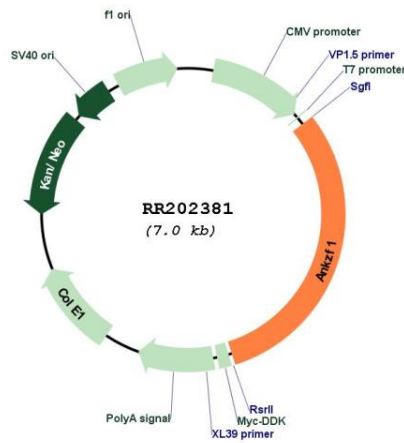
UniProt ID: [Q66H85](#)

Cytogenetics: 9q33

MW: 80.6 kDa

Gene Summary: Plays a role in the cellular response to hydrogen peroxide and in the maintenance of mitochondrial integrity under conditions of cellular stress (By similarity). Involved in the endoplasmic reticulum (ER)-associated degradation (ERAD) pathway (By similarity). [UniProtKB/Swiss-Prot Function]

Product images:



Circular map for RR202381