

Product datasheet for **RR202371**

Nudc (NM_017271) Rat Tagged ORF Clone

Product data:

Product Type:	Expression Plasmids
Product Name:	Nudc (NM_017271) Rat Tagged ORF Clone
Tag:	Myc-DDK
Symbol:	Nudc
Synonyms:	c15; Silg92
Vector:	pCMV6-Entry (PS100001)
E. coli Selection:	Kanamycin (25 ug/mL)
Cell Selection:	Neomycin
ORF Nucleotide Sequence:	>RR202371 representing NM_017271 Red=Cloning site Blue=ORF Green=Tags(s)

TTTTGTAATACGACTCACTATAGGGCGCCGGAATTCGTCGACTGGATCCGGTACCGAGGAGATCTGCC
GCC**CGATCGC**C

ATGGGAGGGGAGCAGGAGGAGGAGCGCTTCGACGGCATGCTGCTGGCCATGGCGCAGCAGCAGGAGGGCG
GCGTGCAGGAGCTTGTAACACCTTCTTCAGCTTCCTTCGACGCAAAACAGACTTTTTCATTGGAGGAGA
AGAGGGGATGGCAGAGAAGCTCATCACACAGACTTTTAAACCACCAACCAGCTGGCACAGAAGGCCAGG
AGAGAGAAGCGAGCTCGGCAGGAGACAGAGCGTCGGGAGAAGGCAGAGCGGGCAGCCAGGCTGGCCAAGG
AGGCCAAGGCAGAGACTCCCGGGCCACAGATCAAGGAACTGACTGATGAGGAGGCAGAGAGACTGCACT
GGAGATTGACCAGAAAAAGGATGCAGAGAACCATGAGGTGCAGCTTAAGAACGGCAGTCTTGACTCTCCA
GGGAAGCAGGATGCTGAGGAAGAGGAAGACGAGGAAGACGAGAAGGACAAAGGAAAGCTGAAACCAACC
TAGGCAATGGGGCTGACCTGCCAACTACCGCTGGACCCAGACCTGTGAGAGCTGGATCTGGCAGTGCC
CTTCCGAGTCAGCTTCCGGCTGAAGGAAAGGATGTGGTGGTGGACATCCAGCGGGCCACCTCCGGGTG
GGCCTCAAAGGACAGGCACCAAGTATTGATGGAGAGCTCTACAATGAAGTAAAGGTGGAGGAGAGCTCGT
GGCTCATCGAGGATGGCAAGGTGGTGCAGTGCATCTGGAGAAGATCAATAAGATGGAGTGGTGGAAACCG
CTTGTTACCAGTGACCCGAAATCAATAACCAAGAAGATTAACCTGAGAACTCCAAGCTCTCAGACCTG
GACAGTGAGACTCGCAGCATGGTGGAAAAATGATGTATGACCAGAGGCAGAAAGTCCATGGGCTTGCCCA
CCTCTGATGAGCAGAAGAAACAGGAAATCCTGAAGAAGTTCATGGATCAGCACCCAGAGATGGATTTCTC
CAAGGCCAAATTCAAC

ACGGTACGGGGCGCTCGAGCAGAACTCATCTCAGAAGAGGATCTGGCAGCAATGATATCCTGGATT
ACAAGGATGACGACGATAAGGTTTAA



[View online »](#)

Protein Sequence: >RR202371 representing NM_017271
Red=Cloning site Green=Tags(s)

MGGEQEEERFDGMLLAMAQQHEGGVQELVNTFFSFLRRKTDFFIGGEEGMAEKLITQTFNHHNQLAQKAR
 REKRARQETERREKAERAARLAKEAKAETPGPQIKELTDEEAERLQLEIDQKKAENHEVQLKNGSLDSP
 GKQDAEEEEDEDEKDKGLKPNLGNADLPNYRWTQTLSELDLAVPFRVSVFRLKGGKDVVVDIQRRLRV
 GLKGQAPVIDGELYNEVKVESSWLIEDGKVTVHLEKINKMEWWNRLVTSDFEINTKKINPENSKLSDL
 DSETRSMVEKMMYDQRQKSMGLPTSDEQKKQEILKKFMDQHPMDFSKAKFN

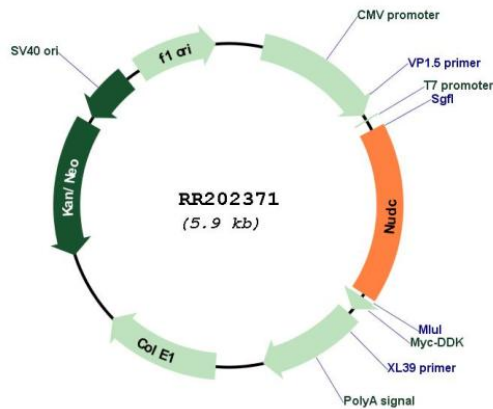
TRTRPLEQKLISEEDLAANDILDYKDDDDKV

Restriction Sites: SgfI-MluI

Cloning Scheme:



Plasmid Map:



ACCN: NM_017271

ORF Size: 996 bp

OTI Disclaimer:	The molecular sequence of this clone aligns with the gene accession number as a point of reference only. However, individual transcript sequences of the same gene can differ through naturally occurring variations (e.g. polymorphisms), each with its own valid existence. This clone is substantially in agreement with the reference, but a complete review of all prevailing variants is recommended prior to use. More info
OTI Annotation:	This clone was engineered to express the complete ORF with an expression tag. Expression varies depending on the nature of the gene.
Components:	The ORF clone is ion-exchange column purified and shipped in a 2D barcoded Matrix tube containing 10ug of transfection-ready, dried plasmid DNA (reconstitute with 100 ul of water).
Reconstitution Method:	<ol style="list-style-type: none"> 1. Centrifuge at 5,000xg for 5min. 2. Carefully open the tube and add 100ul of sterile water to dissolve the DNA. 3. Close the tube and incubate for 10 minutes at room temperature. 4. Briefly vortex the tube and then do a quick spin (less than 5000xg) to concentrate the liquid at the bottom. 5. Store the suspended plasmid at -20°C. The DNA is stable for at least one year from date of shipping when stored at -20°C.
RefSeq:	NM_017271.2 , NP_058967.1
RefSeq Size:	1290 bp
RefSeq ORF:	999 bp
Locus ID:	29648
UniProt ID:	Q63525
Cytogenetics:	5q36
MW:	38.4 kDa
Gene Summary:	expression is induced by prolactin; highest expression occurs during the G1/S transition phase of the cell cycle [RGD, Feb 2006]