

GACAGAGAGGTGTCTGCCTGGGCTACGAGGGCATTCTTTAGGTATGGTGGTGAGGCACAGATGAGATTTCCAGCTACTCTTCCCACTCCGAGTAACGTTGGTCCCACCTGGGCTCTCCTATGTATTCTAGTTCTCCTGTTCCTACTGGGAGTCCCTATCCAAATCCTTCTCTTTGGGGACACCATCCCATGGTGCTCAGCCTCCTACCATGTCAACCCCAATGTCTGCTGTTGAAACCCAGCCATGCAGGCTGCAAGCCTGAGTGGTTTGACTGGACAGAGATTGTGTACTCAGGAAAACACAACGGTATTTGCATTTACTTTTCTCGAATCATGGGAAATATTTGGATGCTAGCTTAGTTGTTGAAAAGATATTCAAGAGTTCCAACAGGGAGATCACTGCAATTGAAAGCAGTGTGCCTATCCAGCTGCTGGAGTCAGTGCTACAGGAACTGAAGGGTTTGAGGAATTTCTAGACAGAATTTCTCAGTTTTCCAGGAGCACCCTAGGAAATCCAAATACCACTGCCAAAGTGCAGCAGAGGCTGCTTGGAGTCATGCGTCCCAGAAATGAAACACCCAGCAAATGCAACAGGAGCTGCAGAGGAAGTTTCATGAGGCTCAACTGAGTGAGAAGATTTCACTTCAGGCAATCCAGCAGCTAGTTAGAAAATCGTACCAAGCTCTGGCTTTGTGGAAACTCCTTTGTGAACATCAGTTTACTGTCATTGTAGGAGAACTTCAAAGGAATTTCAAGAGCAGCTGAAGATCACTACCTTTAAGGATCTGTAATCAGGGAGAAAGAGGTCAGTGGAGCACTAATTGCTTCTCTCATCACTGCTACATCAGAGACAATGCTGCTGTAGATGGCATTAGTTTACATCTGCAGGACACCTGTCCGCTTCTGTATAGCACAGATGATGCAGTTTGTCCAAGGCAAATGAACTTCTCAGCGTTCCCGCAAGTTCAAGTAAGAGCGAGAGAGAGAGGATGTTGAGGGAGTCTCTGAAGGAGTACCAGAAAATCAGCAACCAAGTAGACCTCCCAGTGTGTGCTCAGTATCGGCAAGTGCCTTTTATGAGGGTGTGGTGGAACTGTCTCTTACTGCTGCGGAGAAGAAAGATCCTCAGGGTCTTGGACTCCATTTCTATAAGCATGGGGAACCGGAAGAGGATGTGGTTGGTCTTCAGACTTTCCAAGAGAGATTAACAGTTACAAGTGCATCACAGACACTCTTCAAGAACTGGTAAATCAAAGTAAGGCAGCTCCTCAGTCTCCTAGTGTACCCAAAAGCCTGGTCTCCAGTGTGTGTCATCCGATCCCAACATGCTGAGCAATGAAGAGGAGGACATCACTTTGAACAAATGCTTAACTGGCTCAGCGATCCAAGGATGAGCTCTTCACTGCTCTATAACTGGCTAATCCAAGCTGACCTTGAGATAAACTGCTACAGATTGCATCTCCATTTCTTGAGCCACATCTTGTCCGAATGGCCAAAGTGGATCAAACCGGATTCGCTATATGGATTTACTCTGGAGGTATTATGAGAAGAACAGGAGTTTTCAGCAGTGTCTCGGTCCTGTCCAAGCTGGCCGACATGCACAGCACAGAAATTTCACTGCAGCAGCGACTAGAATACATTGCTCGAGCCATTCTTAGTGCAAAAAGTTCCACTGCCATTTCCATCCATAGCTGCAGATGGTGAATTCCTACATGAACTAGAAGAGAAAATGGAAGTTGCTAGGATCCAATTCAGATACAAGAGACACTCAAAGGCAGTACTCCCATCATTTCTCAGTGCCAGGATGCAATTTCTCAGCTGGATTCTGAGCTCATGGACATTACTAAGCTTTATGGAGAAATTTGCTGACCCATTTAACTTGCAGAATGTAACTTGAATCATTATTGTGCTGGTTATTCAGATCCCATATTGGTACACACACTTTGGCAAGATATCATAGAGAAAGAATTGAGTGATAGCGTAACATTGAGTTCATCAGATCGAATGCATGCTCTTAGCCTCAAGCTTGTCTCCTTGGCAAATCTATGCTGGCACACCTCGATTTCCCTCTGGATTCATTGTGCAGTTCTTGAGCAGCAAGTTTGTACTTTAACTGGGATGTGGGATTTGTGATACAGACCATGAATGAAATCGGTGTGCCTTTACCTAGGCTACTAGAAGTTTATGATCAGCTCTTCAAATCAAGGGATCCATTCTGGAACAGAGTGAAAAGTCCACTGCACCTTTTGGATTGTATCCATGTAAGTGTGACAAGATATGTTGAGAATCCTAGCCTAGTTTTAAATTTGTGAGAGGAGAAGGTTTACAAATCTCTGCCTGGATGCCGCTGTGGTTATCTGGTTGAACTTCAGTCAATGAGCTCTTCGGTGGCAGTACAAGCCATCACTGGAAATTTAAATCTCTCCAAGCGAAGTTGGAACGGCTCCAT

ACGCGTACGCGGCCGCTCGAGCAGAACTCATCTCAGAAGAGGATCTGGCAGCAAATGATATCCTGGATTACAAGGATGACGACGATAAGGTTTAA

Protein Sequence: >RR202335 representing NM_053952
 Red=Cloning site Green=Tags(s)

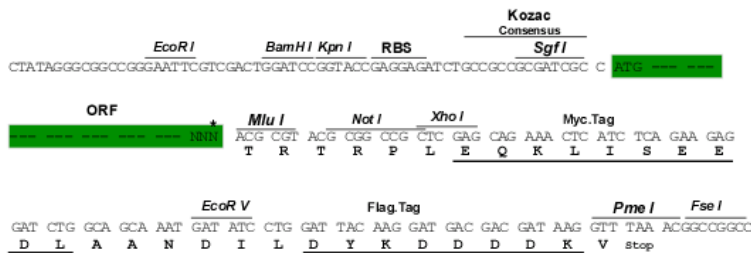
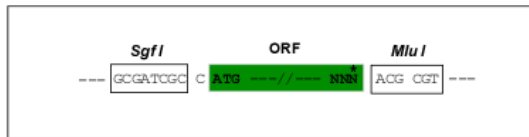
MPSMLGSMMAVSTAPSLSQEALENAGRLIDRQLQEDRMYPDLSELLMVSAPNSPTVSGMSMDYPLQGPG
 LLSVPSLPEIISTIRRVPLRLSWLNSLDTCSVTAMMGVFPPIRAWLTIDSDIFMWNVEDGGDLAYFDGLS
 ETILAVGLVKPKAGIFQPHVRHLLVLATPVDIVILGLSYANVQTGSGILNDSVCGGLQLLPDPLYSPLTD
 NTYLLTITSTDNGRIFLAGKDGCLYEVAYQAEAGWFSQRCRKINHSSLSFLVPSLLQFTFSEDDPIVQ
 IEIDNSRNILYTRSEKGVIQVYDLGHDGQMSRVASVSQNAIVCAAGNIARTIDRSVFKPIVQIAVIENS
 ESLDCQLLAVTHAGVRLYFSTCFRQPLARPNTLTLVHVRLPPGFSASSTVEKPSKVHKALYSKILLMT
 ASENEDNDILWCVNHDTFPFQKPMETQMTTRVDGHSWALSAIDELKVDKIITPLNKDHIPITDSPVVVQ
 QHMLPPKFKVLLSAQGSMLFHLRVPDQLRHLLVSNVGGDGEIERFKLHQEDQACATCLILACSTAAC
 DREVSAWATRAFFRYGGEAQMRFATLPTPSNVGPILGSPMYSSSPVPTGSPYPNPSSLGTPSHGAQPPT
 MSTPMSAVGNPAMQAASLSGLTGPEIVYSGKHNGICIFYSRIMGNIWDASLVVERVFKSSNREITAISS
 VPIQLLESVLQELKGLQEFDRNSQFSGGPLGNPNTTAKVQQRLLGVMRPENGNTQMQQELQRKFHEAQ
 LSEKISLQAIQQLVRKSYQALALWKLCEHQFTVIVGELQKEFQEQLKITTFKDLVIREKEVTGALIASL
 INCYIRDNAAVDGISLHLQDTCPLLYSTDDAVCSKANELLQRSRVQSKSERERMLRESLKEYQKISNQV
 DLPVCAQYRQVRFYEGVVELSLTAAEKDPQGLGLHFYKHGPEEDVVLQTFQERLNSYKCIDTDLQE
 LVNQSKAAPQSPSPKPPVLSDDPNMLSNEEAGHFEQMLKLAQRSKDELFSIALYNWLIQADLADK
 LLQIASPFLEPHLVRMAKVDQNRVRYMDLLWRYYEKNRSFSSAARVLSKLADMHSTEISLQQRLEYIARA
 ILSAKSSTAISIAADGEFLHELEEKMEVARIQLQIETLQRQYSHSSVQDAISQLDSELMIDITKLYGE
 FADPFKLAECKLAIHCAGYSDPILVHTLWQDIIEKELSDSVTLSSDRMHSLKLVLLGKIYAGTPRF
 FPLDFIVQFLEQQVCTLNWDVGFVIQTMNEIGVPLRRLLEVYDQLFKSRDPFVNRVKSPLHLDDCIHVLL
 TRYVENPSLVLCERRRFTNLCLDAVCGYLVELQSMSSSVAVQAITGNFKSLQAKLERLH

TRTRPLEQKLISEEDLAANDILDYKDDDDKV

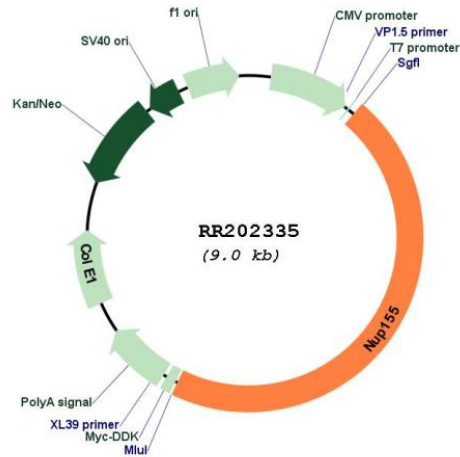
Restriction Sites:
 Cloning Scheme:

SgfI-MluI

Cloning sites used for ORF Shuttling:



* The last codon before the Stop codon of the ORF

Plasmid Map:


ACCN: NM_053952

ORF Size: 4170 bp

OTI Disclaimer: The molecular sequence of this clone aligns with the gene accession number as a point of reference only. However, individual transcript sequences of the same gene can differ through naturally occurring variations (e.g. polymorphisms), each with its own valid existence. This clone is substantially in agreement with the reference, but a complete review of all prevailing variants is recommended prior to use. [More info](#)

OTI Annotation: This clone was engineered to express the complete ORF with an expression tag. Expression varies depending on the nature of the gene.

Components: The ORF clone is ion-exchange column purified and shipped in a 2D barcoded Matrix tube containing 10ug of transfection-ready, dried plasmid DNA (reconstitute with 100 ul of water).

Reconstitution Method:

1. Centrifuge at 5,000xg for 5min.
2. Carefully open the tube and add 100ul of sterile water to dissolve the DNA.
3. Close the tube and incubate for 10 minutes at room temperature.
4. Briefly vortex the tube and then do a quick spin (less than 5000xg) to concentrate the liquid at the bottom.
5. Store the suspended plasmid at -20°C. The DNA is stable for at least one year from date of shipping when stored at -20°C.

RefSeq: [NM_053952.1](#), [NP_446404.1](#)

RefSeq Size: 4311 bp

RefSeq ORF: 4173 bp

Locus ID: 117021

UniProt ID: [P37199](#)

Cytogenetics: 2q16
MW: 155 kDa
Gene Summary: nuclear pore complex protein [RGD, Feb 2006]