

Product datasheet for **RR202327**

Uri1 (NM_001107507) Rat Tagged ORF Clone

Product data:

Product Type:	Expression Plasmids
Product Name:	Uri1 (NM_001107507) Rat Tagged ORF Clone
Tag:	Myc-DDK
Symbol:	Uri1
Synonyms:	RGD1310358
Vector:	pCMV6-Entry (PS100001)
E. coli Selection:	Kanamycin (25 ug/mL)
Cell Selection:	Neomycin



[View online »](#)

ORF Nucleotide Sequence:

>RR202327 representing NM_001107507
 Red=Cloning site Blue=ORF Green=Tags(s)

TTTTGTAATACGACTCACTATAGGGCGGCCGGAATTCGTCGACTGGATCCGGTACCGAGGAGATCTGCC
 GCC**CGGATCGCC**

ATGGAGCCCCCGTCCGAACCGAGCCCGAGCCCCAGCCCTTTGCAGAGGCCTCAGCCGCGCTCCGCTGC
 GCGCACCAAGAGGTGGCGCGCTTCGCGAGGAGCAGGAAAAGGTGGTCACTAACTGCCAAGAGAAAATCCA
 GCATTGGGAGAAAAGTAGACAATGACTATAGTGCTCTCAAGAGAGGCTGAGGACCTTGCCTGACAAGTTG
 TCTTACGACATCATGGTACCATTGGCCCTCTTGCCTTCATGCCAGGAAAAGTTGTCATACTAATGAAG
 TCACTGTTTTACTTGGGACAACGGTTTGCAAAGTGCTCAGCGAAGCAGGCCGTTGGTTTGTGAGCA
 TCGGAAAGAACATGTAAGAAAACCATAGATGATTTTAAAAAGTGTGAAGAATTTGAATCCAGAGTT
 GAATTCACAGAAGATTTGCAGAAGATGAGTGATGCTGCAGGTGATTTTGTGACATAAGAGAAGAAATTA
 AAAGCGACTTTGAATTTAAAGGAAAACAACGAATTGCTCATAAACCTCACTCAAACCAAAAAGTTTCA
 TATTTTTGAAGCAGAATTTGAAAATGGTATAAAACCCAGGGTACGTTTGTGATGATGAACTGTGGCT
 CGGCTTGAAGAGCTGGAGAGACAAGAAGAGTTGCTGGGTGAACCTAAAAGTAAGCCTGATACTGTAATTG
 CAAATGGAGAAGACAGTGTCTTCTGAGGAAGAAAAGAAAGATGAAGACACAGGTGTGAATGTGGTGTG
 TCCAGTGACAGACTCCTCCGCCCCAGCAGCTGTAAAAGGCATGGTGGAAATGCAGGACTCCCTAATGGT
 CAGACCAGCAGTCTGAATTCAGTGAATGGCTCAAAATCTTACCATAGCAACAAAAGAGATGAAGAAG
 AAGAAGAAGAAGAAGATGAAGATGATGATGAAGAAGATGATGATGAAAGTGACCATGCTGTTTCAGC
 AGATAATCTATACCAACAATAATTTCTCTACTGTTGAACCAAAAAGGGTTCGAATAAATACTGGG
 AAAAATACCACCTTAAAGTTCAAGTGAAGAAGAAAGGAAGCCAAACGGAACGAAAGAGTGGTGCCT
 CTCACTGCCCCATGAGCTACCTGCCATCAGGAGTCTGCTGATATTTACAGAGTCTTCGTTGGATGGT
 GAATGGAGAATACATTCCTCGGAAGTCCATCCTGAAGTCTCGTAGCCGAGAGAACAGCGTGTGCAGCGAC
 ACGAGCGAGAGCAGTGTGCAGACGTGGACATTGACAGACGGGCCCTCTGCGGAGCCCCAGCTCTGAGG
 AGACCGAGGCTGGCAGCAGCACTTTGGAGGAACTCCAAGAGAACCACCCCAAGAAGCCTTTGCCCTCAGG
 AGTGTCTGAGGCTTTTTCTGGAAGTGAATAGAAAAGGAATTTTTATCACCGTCCCTAGCACCACACTCA
 GCCATTGCTCATCATGCCCTACCCACATTCCAGAGCGAAAAGAAGTTCTGTGAGAAGCATCAGAGGAAC
 CCGCAAAGAGGGTTTCGAAGTTCAGAGCTGCGAGATTGCAGCAGAGAAAC

ACGCGTACGCGGCCGCTCGAGCAGAACTCATCTCAGAAGAGGATCTGGCAGCAAATGATATCCTGGATT
 ACAAGGATGACGACGATAAGGTTTAA

Protein Sequence:

>RR202327 representing NM_001107507
 Red=Cloning site Green=Tags(s)

MEPPSEPEPEPQPF AEASAAAPLRAPEVARLREEQEKVV TNCQEKIQHWEKVDNDYSALQERLRTL PDKL
 SYDIMVPFGPLAFMPGKLVHTNEVTVLLGDNWFAKCSAKQAVGLVEHRKEHV RKTIDDFKVLKNFESRV
 EFTEDLQKMSDAAGDFVDIREEIKSDFEFKQKQRIAHKPHSKPKTSDIFEAEFENG IKPQGTFFDDELWA
 RLEELERQEELLGELKSKPDTVIANGEDTVS EEEKEDEDTGVNVVSPVTDSSAPSSCKRHGGNAGLPNG
 QTSSLNYSVNGSNYSYHNSKEDEEEEEDEDDDEDDDES DHAVSADNSIPTIYFSHTVEPKRV RINTG
 KNTTLKFSEKKEEAKRKRKSGAASHSAHELPAIRSPADIYRVFVDVNGEYIPRKSILKSRSENSVCS D
 TSESSAADVDIDRRAPLRSPSEETEAGSSTLEELQENHPKPLPSGVSEAFSGTVIEKEFLSPSLAPHS
 AIAHHALPTIPERKEVLSEASEEPAKRVSKFRAARLQQRN

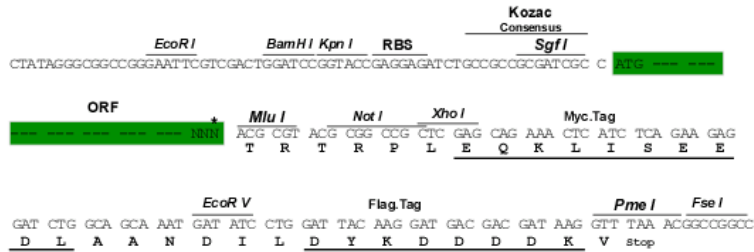
TRTRPLEQKLI SEEDLAANDILDYKDDDDKV

Restriction Sites:

Sgfl-MluI

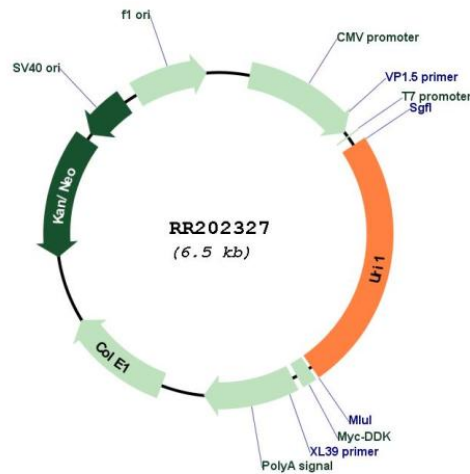
Cloning Scheme:

Cloning sites used for ORF Shutting:



* The last codon before the Stop codon of the ORF

Plasmid Map:



ACCN:	NM_001107507
ORF Size:	1590 bp
OTI Disclaimer:	The molecular sequence of this clone aligns with the gene accession number as a point of reference only. However, individual transcript sequences of the same gene can differ through naturally occurring variations (e.g. polymorphisms), each with its own valid existence. This clone is substantially in agreement with the reference, but a complete review of all prevailing variants is recommended prior to use. More info
OTI Annotation:	This clone was engineered to express the complete ORF with an expression tag. Expression varies depending on the nature of the gene.
Components:	The ORF clone is ion-exchange column purified and shipped in a 2D barcoded Matrix tube containing 10ug of transfection-ready, dried plasmid DNA (reconstitute with 100 ul of water).
Reconstitution Method:	<ol style="list-style-type: none">1. Centrifuge at 5,000xg for 5min.2. Carefully open the tube and add 100ul of sterile water to dissolve the DNA.3. Close the tube and incubate for 10 minutes at room temperature.4. Briefly vortex the tube and then do a quick spin (less than 5000xg) to concentrate the liquid at the bottom.5. Store the suspended plasmid at -20°C. The DNA is stable for at least one year from date of shipping when stored at -20°C.
RefSeq:	NM_001107507.1 , NP_001100977.1
RefSeq Size:	3236 bp
RefSeq ORF:	1593 bp
Locus ID:	308537
Cytogenetics:	1q21
MW:	59.3 kDa