

Product datasheet for **RR202324**

PPP4r3b (NM_001108367) Rat Tagged ORF Clone

Product data:

Product Type:	Expression Plasmids
Product Name:	PPP4r3b (NM_001108367) Rat Tagged ORF Clone
Tag:	Myc-DDK
Symbol:	PPP4r3b
Synonyms:	RGD1309450; Smek2
Mammalian Cell Selection:	Neomycin
Vector:	pCMV6-Entry (PS100001)
E. coli Selection:	Kanamycin (25 ug/mL)



[View online »](#)

ORF Nucleotide Sequence:

>RR202324 representing NM_001108367
 Red=Cloning site Blue=ORF Green=Tags(s)

TTTTGTAATACGACTCACTATAGGGCGGCCGGAATTCGTCGACTGGATCCGGTACCGAGGAGATCTGCC
 GCC**CGCATCGCC**

ATGTCGGATACACGGCGCGAGTGAAGGTCTATACCTGAACGAAGACCGCAATGGGACGACCGAGGCA
 CCGGGCACGTCTCTCCACTTACGTAGAGGAGCTCAAAGGGATGTCGCTGCTGGTTCGAGCAGAGTCCGA
 CGGATCTCTACTCTTGGAGTCAAAGATAAATCCAAACTGCATATCAGAAGCAGCAGGATACATTAATT
 GTTTGGTCAGAAGCTGAAAATGATTTGGCTCTAAGTTTTCAAGAAAAAGCTGGCTGTGATGAAATTT
 GGGAAAAATTTGTCAAGTTCAAGGTAAGGACCCATCAGTAGAAGTACACAGGACCTCATTGATGAATC
 AGAAGAAGAACGATTTGAAGAAATGCCAGAACTAGTCATCTAATTGACCTGCCACATGTGAACCTCAGT
 AAAGTGAAGAGATTGCTGACTTAGTTACCTCAGTTCTCTCCTCACCTATCCGTAGGGAAAAGCTGGCTC
 TGGCCTTGAAAAATGAAGGCTATCAAAAACTGCTGCAGCTGTTCCAGGCTTGTGAGAACCTAGAAAA
 CACTGAAGGCTTACACCAGCTGTATGAGATTATTAGAGGAATCTTATTCCTAAATAAGGCAACTCTTTTT
 GAGGTAATGTTTTCTGATGAGTGTATCATGGATGTCGTGGGATGCCTTGAATATGATCCTGCTTTGGCCC
 AGCCAAAAAGACATAGAGAATTCTTACTAAAAGTAAAAGTTTAAAGGAAGTTATACCAATAACAGACTC
 GAACTAAGGCAAAAAATACATCAGACTTACAGGGTACAATACATTACAGGACATCATTTTACCTACACCA
 TCTGTTTTGAAGAGAATTTCTTTCTACTCTTACATCTTTTATTTTCTCAACAAAGTTGAAATAGTCA
 GCATGCTGCAGGAAGATGAGAAATTTTGTCTGAAGTTTTTGCACAATTAACAGATGAGGCTACAGATGA
 TGATAAACGGCGCAACTGGTTAATTTCTTCAAAGAAATTTGTGCATTTTCTCAGACATTGCAACCTCAG
 AACAGGGATGCTTTTTTCAAACCTTGGCAAAATGGGAATTTCTCCAGCTCTTGAATTTAGTCCATCTAT
 TGGTACGAGAATTTGTGATGCAAGAAGCCAGCAGAGTGATGATGATATACTTCTCATTAACTGGTGATT
 GAACAAATGATTTGTGATACTGACCCTGAGCTAGGAGGTGCTGTTCAACTAATGGGGCTTCTTCGTA
 TAATTGATCCAGAGAACATGTTGGCTACAATAAAAAGTAAAAGAGTGAAGTTCTTAAATTTCTTCTA
 CAATCATTGTATGCATGTTCTCAGACTCCACTTTGACCAATACATCAGAAGACAAATGTGAGAAAGAT
 AATATGCTTGGATCTAACAAAACCAACACAATTTGTCTGATAATTATCAAACAGCAGACTACTTGCTT
 TAATTTTAGAATTACTCACATTTTGTGTGAACATCACACATACCATATAAAAAACTACATCATGAACAA
 GGATTTGCTAAGAAGAGTCTTGGTGTGATGAATCAAAGCATACTTTTCTGGCCTTGTGTGCTCTTCGT
 TTTATGAGGCGAATAATTGGCCTTAAGGATGAGTTTTATAATCGTTACATCACCAAGGAAATCTTTTTG
 AACCAGTTATAAATGCCCTTTTGGATAATGGAACCTCGGTACAATCTATTAATTCAGCTGTTATTGAATT
 GTTTGAATTTATAAGAGTGGAAGATATCAAGTCTCTCACTGCACATATAGTTGAAAACCTTTTATAAGCA
 CTTGAATCGATTGAATATGTTTCCAGACTTCAAAGGATTGAAGACTAAATATGAACAAGAAAAAGACAGAC
 AAAATCAGAACTGAACAGTGTGCCATCTATATTGCGTAGTAAACCGATTTCCGAGAGATGCAAAAAGCCTT
 GGAAGAGGATGAAGAAATGTGGTTAATGAAGATGATGATGAAGAAGGAAAGTCAAGTTGTAAACACCAAGT
 GAAAAAATAAGACTGAAGATGATTTTCCAGATAGTTACGAAAAATTTATGGAGACTAAAAAGCAAAAG
 AAAGTGAAGACAAGGAAAACCTTCCAAAAGGACATCTTCTGGTGGCTTCAAATTTACTTTCTCCCATC
 CCCAGTGTCTAATGGAACAAACAGTACAAACAGTAAAGTCTGTAGTGGCTCAGACAACACCAGCAAGT
 TCTAATGGGTCTTCCAAAACACTACAACTTGGCTACATCAGTACAGCCACTAAGGGAAGTTTGGTTG
 GCTTAGTGGACTATCCAGATGATGAAGAGGAAGATGAGGAAGAAGAATCATCCCCAGAAAAAGACCTCG
 CCTTGGCTCA

ACGCGTACGCGGCCGCTCGAGCAGAACTCATCTCAGAAGAGGATCTGGCAGCAATGATATCCTGGATT
 ACAAGGATGACGACGATAAGGTTTAA

Protein Sequence: >RR202324 representing NM_001108367
Red=Cloning site Green=Tags(s)

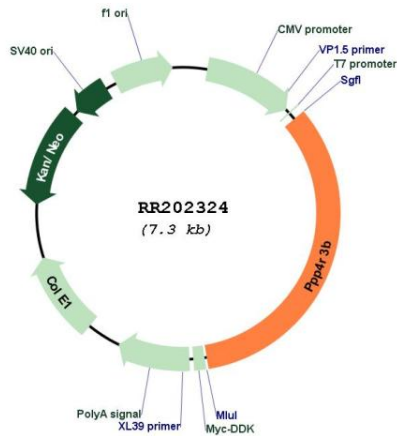
MSDTRRRVKVYTLNEDRQWDDRGTGHVSSSTYVEELKGMSLLVRAESDGSLLLLESKINPNTAYQKQDQTLI
VWSEAEYDLALSFQEKAGCDEIWEKICQVQKDPVSEVTQDLIDSEEEERFEEMPETSHLIDLPTCELS
KLEEIADLVTSVLSSPIRREKLALALENEGYYIKLLQLFQACENLENTEGLHQLYEIIRGILFLNKATLF
EVMFSDECIMDVVGCLEYPALAQPKRHREFLTKAKFKEVIPIITDSELRQKIHQTYRVQYIQDIILPTP
SVFEENFLSTLTSFIFFNKVEIVSMLQEDEKFLSEVFAQLTDEATDDDKRRELVNFFKEFCAFSQTLQPQ
NRDAFFKTLAKLGIPLALEIVMGDDLQVRSAAATDIFSYLVEFSPSMVREFVMQEAQQSDDILLINVI
EQMICDTPELGGAVQLMGLLRTLIDPENMLATTNKTEKSEFLNFFYNHCHMHLTAPLLTNTSEDKCEKD
NMLGSNKTNTICPDNYQTAQLLALILELLTFCVEHHTYHIKNYIMNKDLLRRVFLMNSKHTFLALCALR
FMRRIIIGLKDEFYNYITKGNLFEPVINALLDNGTRYNLLNSAVIELFEFIRVEDIKSLTAHIVENFYKA
LESIEYVQTFKGLKTKYEQEKDRQNQKLSVPSILRSNRFRRDAKALEEDEEMWFNEDDDEEGKSVVTPV
EKTKTEDDFPDSYEKFMETKKAKESEDKENLPKRTSSGGFKFTFSPSAANGTNSTNSKSVVAQTTPAS
SNGSSSKTTNLATSVTATKGSVLGLVDYPDDEEEDEEEESSPRKRPRLGS

TRTRPLEQKLISEEDLAANDILDYKDDDDKV

Restriction Sites: SgfI-MluI

OTI Annotation:	This clone was engineered to express the complete ORF with an expression tag. Expression varies depending on the nature of the gene.
Components:	The ORF clone is ion-exchange column purified and shipped in a 2D barcoded Matrix tube containing 10ug of transfection-ready, dried plasmid DNA (reconstitute with 100 ul of water).
Reconstitution Method:	<ol style="list-style-type: none"> 1. Centrifuge at 5,000xg for 5min. 2. Carefully open the tube and add 100ul of sterile water to dissolve the DNA. 3. Close the tube and incubate for 10 minutes at room temperature. 4. Briefly vortex the tube and then do a quick spin (less than 5000xg) to concentrate the liquid at the bottom. 5. Store the suspended plasmid at -20°C. The DNA is stable for at least one year from date of shipping when stored at -20°C.
RefSeq:	<u>NM_001108367.1, NP_001101837.1</u>
RefSeq Size:	5014 bp
RefSeq ORF:	2463 bp
Locus ID:	360993
Cytogenetics:	14q22
MW:	94 kDa

Product images:



Circular map for RR202324