

Product datasheet for **RR202318**

Sardh (NM_053664) Rat Tagged ORF Clone

Product data:

Product Type:	Expression Plasmids
Product Name:	Sardh (NM_053664) Rat Tagged ORF Clone
Tag:	Myc-DDK
Symbol:	Sardh
Vector:	pCMV6-Entry (PS100001)
E. coli Selection:	Kanamycin (25 ug/mL)
Cell Selection:	Neomycin



[View online »](#)

ORF Nucleotide
Sequence:

>RR202318 representing NM_053664
 Red=Cloning site Blue=ORF Green=Tags(s)

TTTTGTAATACGACTCACTATAGGGCGGCCGGGAATTCGTCGACTGGATCCGGTACCGAGGAGATCTGCC
 GCC**CGGATCGCC**

ATGGCTTCACTGAGCCGGTCTCCGTGTAGCTGCCACCTGTCCTCGAGGGAGATCTGCTCGCAACCTGG
 GGCTACAGCCCCTAGCCAGGGAGGCCAGGCCACCACTGAGAAGAGTGTTCCATACCAGTGCACCCTGAA
 GGAGGAGGCCAAGGTGCCTCTGTGGTGCCCAAGGACCAAGCCAGCCCTGCCTAGCACAGCCAATGTT
 GTGGTCATTGGTGGGGCAGTTTGGGCTGCCAGACTCTGTACCACTTGGCCAAGCTGGGTGTAGGTGGAG
 TTGTGCTGCTGGAGAGAGCGACTGACCTCTGGGACCACCTGGCACACAGCAGGCCCTACTGTGGCAGCT
 GCGGCCACAGCATGTGGAAGTAGAGCTTCTGGCTCACACACGGCAAGTGGTGAGCCATGATCTGGAAGAG
 GAGACTGGGCTTACACAGGCTGGATCCAGAATGGTGGCCTTTCATCGCCTCAACCAGCAGCGCCTGG
 ATGAATAACAAGAGGCTCATGTGCTTGGCAAGGCCTACGGTATAGAATCCCATGTGCTGAGCCCTGCAGA
 GACCAAGGATCTGTATCCGCTGATGAATGTGGACGACCTCTATGGGACCCTGTATGTGCCTCGGGATGGT
 ACCATGGACCCGGCTGGCACCTGCACTACCCTCACCAGAGCAGCAGTGGCTAGGGGAGCTCAGGTCAATTG
 AAAACTGTGCACTGACTGGCATCCGTGTGCGGACAGACGACTTTGGAGTGCGGCGGGTGACAGCTGTGGA
 GACTCAACATGGCTCCATCCAGACACCCTGCGTGGTCAACTGTGCAGGGGTGTGGGCGAGCTCCGTGGGC
 CGGATGGCTGGAGTGAAGTCCCCTGGTGGCCATGCACCATGCCTACGTTGTCAGTGCAGCGCATTGAGG
 GGATCCAGAACATGCCCAATGTCGGGATCATGATGCTTCTGTCTACCTCCGCTGCAGGGGGATGCCTT
 GTCTGTGGGTGGCTATGAGGCCAACCCATCTTTGGGATGAGGTGTGAGACAAATTTGCCTTTGGCCTC
 TTTGACCTGGACTGGGATGTGTTCACTCAGCACATTGAAGTGCCATTAACCGTGTCCCGTGTGGGAGA
 AAACGGGATCAAGTCCACTGTCTGTGGCCCTGAATCCTTACACCCGACCATAAGCCCCGTGATGGGGGA
 GGCTCCTGAGCTCCGAGGCTTCTTCTTGGCTGTGGCTTCAACAGTGCAGGCATGATGTTGGGTGGTGGC
 TGTGGACAGGAGCTGGCCATTGGATTGTGCATGGGCGCCAGAGAAGGACATGTACAGCTATGACATCA
 GGCGTTTTCCACCCTCGCTCACGGACCACCCACGCTGGATCCGAGAGCGCAGCCACGAGTCTATGCCAA
 GAACTACTCGTTGTCTTCTCACGATGAGCCCTGGCGGGCCGAACATGAGGAGGGACCCTCTGCAC
 GAGGAGCTGCTTGGACAAGGCTGTGTGTTCAAGAACGACAGGGCTGGGAACGGCCAGGATGTTCAACC
 CCCAAGAAACAGCTCAGGTCTAGACTACGACTACTATGGGGCTACGGACACCAGGCACACAAGGACTA
 CGCTACAGCAGGCTGCTGGGCGATGAATATACCTTCGACTTCCCACCCACCCTGCGTATCCAGAAG
 GAATGTCTGGCCTGCAGAACGGCTGCCCGGTGTTCAACATGTCTTACTTCGGGAAGTTCTACCTTCTGG
 GGGCAGAGCCAGGAAGGCTCCAGACTGGCTTCTCAGCAGATGTAACCGACCCAGGCTCCACGGT
 GTACACATGCATGCTGAACCAACGGGGAGGCACCGAGAGCGACCTGACTGTTAGCTGCCTGGCCCCCTGGT
 GCCCAGGCCAGTCCCCTGGCCCCCTGCTTTGAAGGGATGGCTACTACCTAGCCGTAGGTGGGGCTGTGG
 CCCAACATAACTGGTCCCACATAAACACGGTGTGCAGGATCAGGAGTCCGGTGCCAGCTTATGGATTG
 TTCTGAAGATCTGGGCATGCTCAGTATCCAGGGCCAGCCAGCCGTGACATTCACAGGATGTGCTTGTG
 GCTGACCTGAGCAATGAAGCCTTCCCCTTCTCCACCCACCAGTGGTGGAGCTGCTGGACACCTGGTCC
 GAGCCATCCGGCTATCCTTTGTGGGGAGCTGGGATGGGAGCTGCATGTGCCCAAGCGTCTGCTTGGC
 TGTGTACCGGGCTGTGATGGCTGCAGGGGCGAAGCACGGCCTAGTCAATGCAGGCTACCGTCCCATCGAC
 TCCCTGAGCATTGAGAAAGGCTATCGGCACTGGCATGCAGACCTGAGGTCCGATGACAGCCCCCTGGAGG
 CAGGGTTGGCCTTCACTGCAAGCTCAAGACCTCAGTGCCTTCTAGGCCGAGAGGCCCTGGAGAAGCA
 GCGTGCCACAGGCCTCCGACGACGCTGGTGTGCCTCACTGTGGAAGAGGAGTTCTATGTTCCGCCTA
 GAGGCCATCTGGAGAAATGGCCAAGTGGTGGGCCATGTCCGGAGAGCTGACTTTGGATTACCGTGAACA
 AGACCATGCCTATGGCTACATCCGAGACCCAGTGGAGGGCCAGTCTCTGACTTTGTGAAGAAATGG
 GGACTATGCCTTGGAGAGAATGGGGTACCTATGCTGCCAGGTTACCTGAAGTCTCCCTTGTATCCT
 GACAACAAGCGGGTGAAGGAATCTAT

ACGCGTACGCGGCCGCTCGAGCAGAAACTCATCTCAGAAGAGGATCTGGCAGCAAATGATATCCTGGATT
 ACAAGGATGACGACGATGAAGTTTAA

Protein Sequence: >RR202318 representing NM_053664
 Red=Cloning site Green=Tags(s)

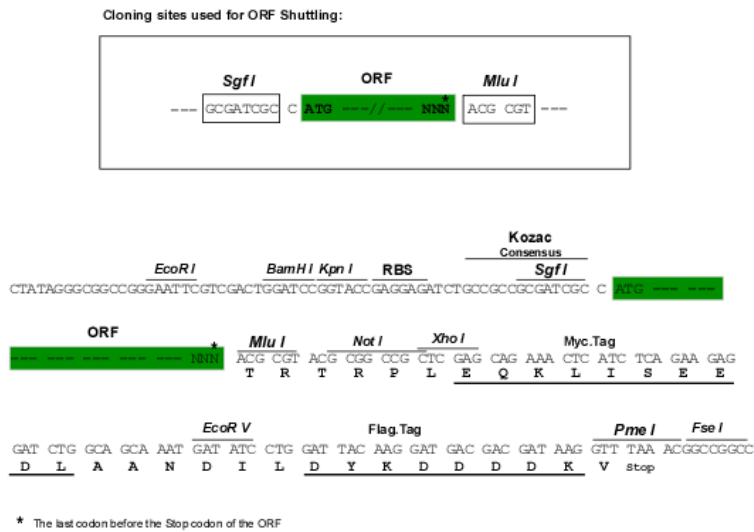
MASLSRVLVAATCPGRSARNLGLQPLAREARPTTEKSVVPYQCTLKEEAQGASVVPQGPSQPLPSTANV
 VVIGGGSLGCQTLYHLAKLGVGGVLLERERL TSGTTWHTAGLLWQLRPSDVEVELLAHTRQVVSHDLEE
 ETGLHTGWIQNGGLFIASNQQRLEDEYKRLMSLGKAYGIESHVLSPAETKDLYPLMNVDDL YGTLVYPRDG
 TMDPAGTCTTLTRAAVARGAQVIENCAVTGIRVRTDDFGVRRVTAVETQHGSIQTPCVVNCAGVWASSVG
 RMAGVKVPLVAMHHAYVVERIEGIQNMPNVRDHASVYLRLQGDAL SVGGYEANPIFWDEVSDKFAFGL
 FDLDWDVFTQHIIEGAINRVPVLEKTGIKSTVCGPESFTPDHKPLMGEAPELRGFFLGCGFNSAGMMLGGG
 CGQELAHWIVHGRPEKDMYSYDIRRFHSLTDHPRWIRERSHESYAKNYSVVFPHDEPLAGRNMRDPLH
 EELLGQGCVFQERQGWERPWFNPQETAQVLDYDYYGAYGHQAHKDYAYSRLLGDEYTFDFPPHCVIQK
 ECLACRTAAAVFNMSYFGKFYLLGADARKAPDWLFSADVNRPPGSTVYTCLMNRGGTESDLTVSCLAPG
 AQASPLAPAFEGDGYLAVGGAVAQHNWSHINTVLQDQEFRCQLMDCSEDLGMLSIOGPASRDILQDVL
 ADLSNEAFPSTHQLVRAAGHLVRAIRLSFVGELGWELHVPQASCLPVYRAVMAAGAKHGLVNAGYRAID
 SLSIEKGYRHHADLRSDDSPLEAGLAFCKLKT SVPFLGREALEKQRATGLRRRLVCLTVEEEVPMFGL
 EAIWRNGQVVGHVRRADFGFTVNKTIAYGYIRDPSGGPVSLDFVKNGDYALERMGVTYAAQVHLKSPFDP
 DNKRVKGIY

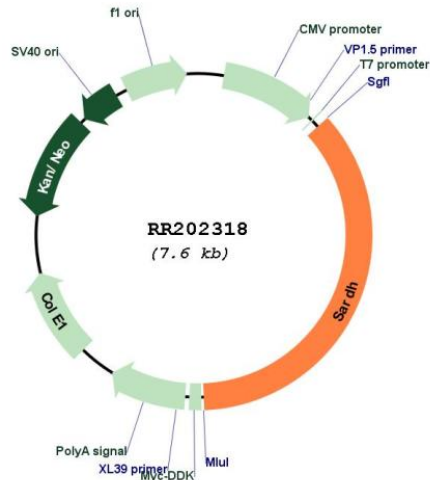
TRTRPLEQKLISEEDLAANDILDYKDDDDKV

Restriction Sites:

SgfI-MluI

Cloning Scheme:



Plasmid Map:


ACCN: NM_053664

ORF Size: 2757 bp

OTI Disclaimer: The molecular sequence of this clone aligns with the gene accession number as a point of reference only. However, individual transcript sequences of the same gene can differ through naturally occurring variations (e.g. polymorphisms), each with its own valid existence. This clone is substantially in agreement with the reference, but a complete review of all prevailing variants is recommended prior to use. [More info](#)

OTI Annotation: This clone was engineered to express the complete ORF with an expression tag. Expression varies depending on the nature of the gene.

Components: The ORF clone is ion-exchange column purified and shipped in a 2D barcoded Matrix tube containing 10ug of transfection-ready, dried plasmid DNA (reconstitute with 100 ul of water).

Reconstitution Method:

1. Centrifuge at 5,000xg for 5min.
2. Carefully open the tube and add 100ul of sterile water to dissolve the DNA.
3. Close the tube and incubate for 10 minutes at room temperature.
4. Briefly vortex the tube and then do a quick spin (less than 5000xg) to concentrate the liquid at the bottom.
5. Store the suspended plasmid at -20°C. The DNA is stable for at least one year from date of shipping when stored at -20°C.

RefSeq: [NM_053664.2](#), [NP_446116.1](#)

RefSeq Size: 3069 bp

RefSeq ORF: 2760 bp

Locus ID: 114123

UniProt ID: [Q64380](#)

Cytogenetics: 3p12

MW: 101.4 kDa

Gene Summary: a flavoenzyme involved in the oxidative degradation of choline to glycine [RGD, Feb 2006]