

## Product datasheet for **RR202313**

### Gns (NM\_001011989) Rat Tagged ORF Clone

#### Product data:

Product Type:	Expression Plasmids
Product Name:	Gns (NM_001011989) Rat Tagged ORF Clone
Tag:	Myc-DDK
Symbol:	Gns
Vector:	pCMV6-Entry (PS100001)
E. coli Selection:	Kanamycin (25 ug/mL)
Cell Selection:	Neomycin



[View online »](#)

**ORF Nucleotide Sequence:**

>RR202313 representing NM\_001011989  
 Red=Cloning site Blue=ORF Green=Tags(s)

TTTTGTAATACGACTCACTATAGGGCGGCCGGGAATTCGTCGACTGGATCCGGTACCGAGGAGATCTGCC  
 GCC**CGGATCGCC**

ATGCGGCTCCCGTCCGACGTGGGCCCGGGCCGGGCTGTCCAGCCGCCTGCCCGCCTGCTGCTACTGC  
 CGCTGCTGAGCGGCTGCCTGGGGCTCGTGGGGCGGCTCGCAGGCCCAACGTGTTGCTGCTGCTCACGGA  
 CGACCAGGACGCGGAGCTCGGGCGCATGACCCCACTAAAGAAAACCAAGGCCCTCATCGGAGAGAAGGGG  
 ATGACTTTCTCCAGCGCTTATGTGCCAGTGTCTCTGCTGCCCCAGCAGAGCCAGCATCCTGACTGGGA  
 AGTACCACACAACCATCACGTCGCAACAACACTTTGGAGGGGAAGTGCAGTAGCAAGTCTGGCAGAA  
 GATCCAGGAGCCATACACCTTCCAGCGATCCTTAAGTTGGTGTGCGGCTATCAAACCTTTTTGCTGGG  
 AAGTATTTAAATGAGTATGGAGCCCAGATGCGGGTGGACTGGAGCACGTGCCTCTGGGCTGGAGTTACT  
 GGTATGCCCTGGAAAAGATTCTAAATACTATAACTACACCCTCTCTATCAACGGGAAGGCACGCAGACA  
 TGGCGAGAAGTATAGCGTGGACTACCTGACAGACGTTCTGGCCAATCTCTCCCTGGACTTCTGGACTAC  
 AAGTCCAACTCTGAGCCATTCTCATGATGATCTCCACTCCAGCGCCCACTCACCGTGGACAGCCGCAC  
 CTCAGTACCAGAAGGCTTTCCCAATGTATCGCACCGAGAAAACAAGAATTTCAACATCCATGGGACGAA  
 CAAGCACTGGTTAATTAGGCAAGCCAAGACTCCCATGACGAATTCCTCAATAAAGTTCTTAGATGACGCC  
 TTCAGAAGGAGGTGGCAAACCTGCTCTCAGTTGACGATCTTGTGAAAAAAGTGGTGAAGAGATTGGACT  
 CGACTGGTGAGCTGGACAACACGTACATCTTCTATACCTCAGACAATGGTACCATACAGGGCAGTTCTC  
 TTTGCCAATAGACAAACGACAACCTCTATGAGTTGATATCAAAGTTCCACTGTTGGTTCGAGGGCCTGGG  
 ATCAAACCAAACAGACAAGCAAGATGCTGGTCTCCAATATTGACTTGGGTCACCATCCTGGACCTCG  
 CTGGCTATGACCTGAACAAGACACAGATGGACGGGACATCCCTGCTGCCATCCTGAAAGGGGACGCTAA  
 CTTAACCTGGAGGTGAGATGTCCTGGTGAATATCAAGGAGAAGGCCGTAATGTACCGACCCGACCTGC  
 CCTTCTTTGAGTCTGGAGTGTCTCAATGTTTCCCGGACTGTGTGTGAGGACGCGTACAACAATACAT  
 ATGCTTGTGTGAGGACTGTATCCATGTGGAACCTACAGTACTGTGAGTTCGACGACCCAGGAGGTATT  
 TGTAGAAGTCTATAACATAACTGCAGATCCAGACCAGATCACCAACATTGCTAAGAGTATAGACCCGAG  
 CTTTTGGGAAAGATGAAGTATCGGCTGATGATGCTCCAGTCTGTTCCGGGCCAACCTGTCGCACTCCGG  
 GGGTCTTTGACCCTGGG

AG**CGGACCG**ACGCGTACGCGGCCGCTCGAGCAGAACTCATCTCAGAAGAGGATCTGGCAGCAAATGATATCC  
 TGGATTACAAGGATGACGACGATAAGGTTTAA

**Protein Sequence:**

>RR202313 representing NM\_001011989  
 Red=Cloning site Green=Tags(s)

MRLPSAAGPGPGCPSRLPALLLLPLLSGCLGLVGAARRPNVLLLLTDDQDAELGGMTPLKTKALIGEKG  
 MTFSSAYVPSALCCPSRASILTGKYPHNHHVNNNTLEGNCSSKSWQKIQEPTYTFPAILKLVCGYQTFAG  
 KYLNEYGAPDAGGLEHVPLGWSYWYALEKNSKYNYTL SINGKARRHGENYSVDYLTDVLANLSLDFLDY  
 KSNSEPFMMISTPAPHSPWTAAPQYQKAFPNVIAPRNKNFNIHGNTKHWLIRQAKTPMTNSSIIFLDDA  
 FRRRWQTL LSVDDLVEKLVKRLDSTGELDNTYIFYTSDNGYHTGQFSLPIDKRQLYEFDIKVPLLVRGPG  
 IKPNQTSKMLVSNIDLGPTIILDLAGYDLNKTQMDGTSLLPILKGDGNLTWRSVLEVEYQGEGRNVTDPTC  
 PSLSPGVSQCFDCVCEDAYNNTYACVRTLSSMWNLYQCEFDQEVFVEVYNITADPDQITNIAKSIDPE  
 LLGKMNRYRLMMLQSCSGPTCRTPGVFDPG

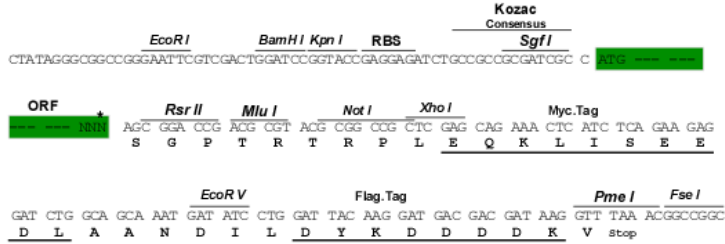
**SGP**TRTRPLEQKLI SEEDLAANDILDYKDDDDKV

**Restriction Sites:**

Sgfl-RsrII

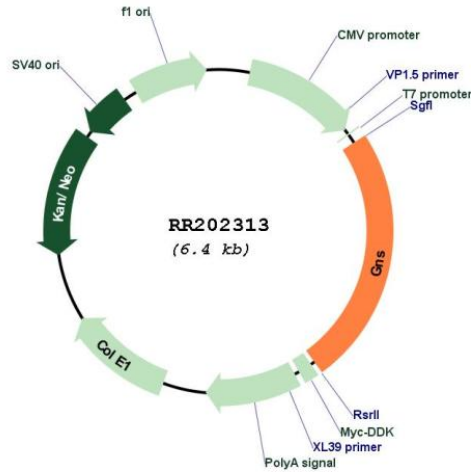
Cloning Scheme:

Cloning sites used for ORF Shuttling:



\* The last codon before the Stop codon of the ORF

Plasmid Map:



ACCN: NM\_001011989

ORF Size: 1557 bp

OTI Disclaimer: The molecular sequence of this clone aligns with the gene accession number as a point of reference only. However, individual transcript sequences of the same gene can differ through naturally occurring variations (e.g. polymorphisms), each with its own valid existence. This clone is substantially in agreement with the reference, but a complete review of all prevailing variants is recommended prior to use. [More info](#)

OTI Annotation: This clone was engineered to express the complete ORF with an expression tag. Expression varies depending on the nature of the gene.

Components: The ORF clone is ion-exchange column purified and shipped in a 2D barcoded Matrix tube containing 10ug of transfection-ready, dried plasmid DNA (reconstitute with 100 ul of water).

**Reconstitution Method:**

1. Centrifuge at 5,000xg for 5min.
2. Carefully open the tube and add 100ul of sterile water to dissolve the DNA.
3. Close the tube and incubate for 10 minutes at room temperature.
4. Briefly vortex the tube and then do a quick spin (less than 5000xg) to concentrate the liquid at the bottom.
5. Store the suspended plasmid at -20°C. The DNA is stable for at least one year from date of shipping when stored at -20°C.

**RefSeq:** NM\_001011989.1, NP\_001011989.1

**RefSeq Size:** 1770 bp

**RefSeq ORF:** 1560 bp

**Locus ID:** 299825

**Cytogenetics:** 7q22

**MW:** 57.8 kDa