

## Product datasheet for **RR202266**

### Abcc10 (NM\_001108201) Rat Tagged ORF Clone

#### Product data:

Product Type:	Expression Plasmids
Product Name:	Abcc10 (NM_001108201) Rat Tagged ORF Clone
Tag:	Myc-DDK
Symbol:	Abcc10
Vector:	pCMV6-Entry (PS100001)
E. coli Selection:	Kanamycin (25 ug/mL)
Cell Selection:	Neomycin
ORF Nucleotide Sequence:	>RR202266 representing NM_001108201 Red=Cloning site Blue=ORF Green=Tags(s)

TTTTGTAATACGACTCACTATAGGGCGGCCGGGAATTCGTCGACTGGATCCGGTACCGAGGAGATCTGCC  
GCC**CGATCGCC**

ATGGAGGGGCTCCTGGCCAGCTTTGTGGCACGGATGCGGCGGGCCACTCCCGCTCTGGGAAGGGGACA  
CCACGGGCACTGCTTCACCCAGCTGGTGTCTCAGCGTCTTCCACACGCTCTCCTCGCCGCTCTCAGCGC  
CTGCCACTTGGGCACCCCAAGGACTAACAATATCATCCAACCTTCAATCCTGGCTGGCGCTCCGACTC  
ACAGCTTCTCTCTCTCTCCGTCTCCCGCTGTAGACCTCTTCCGGTTGTTTTACCTCCGGTGTAC  
ACCCAGGGCCCTATGGCTAGAAGTGTGGCAGGGTGTGTGACTGCTGTGGCCTGGTTACCCACAGCCT  
GGCCCTGTGGCATTGGTTCATTCCTCATGGCCATTCTCGTGGACCCTTGGCCTTGGCTGTGGCAGCC  
TTCTTGCCAAACCCAGCCCTGGTACTGACCCTGCTGTGGCATTGCCAGCGAGGTACATTTCTGCCCCGC  
TTCTCCAGGACCTCTGGGCCGTGTGTCTTCTCATCTGCAGTTGGCAGCCGCTTGGCCTATGGGCT  
GGGCTGGCAGCCCTGGGGACCTCGAGAGCCCTGGACTCACGATCCCTTCTGTCCCCTGAGAGTCAA  
GAAAGAGAGGTAGCTGAAGACGGAGAGAGTTGGCTGTCACGCTTTTCTATGCCTGGTTGGCACCTCTGC  
TTGCTCGTGGAGTCCGAGGAGAGCTCCGGCAGCCCAAGGACTTGGCCCTCCCGCAGACTGCACCC  
TGCTACCTGGCCGAGCCTTCCAAGCGCACTGGAAGGAGGGGGCCAACTGTGGAGGGCCCTGTATGGG  
GCCTTTGGATGTTGCTACATAGCCCTTGGACTGTTGAAGATGGTGGGGACCATGTGGGCTTCTCTGGG  
CTTTACTGCTCTCCCTACTGGTGGGCTTCTGGAGGAAGGGCAAGAGCCTTAAGCCACGGCCTGTCTA  
CGTCTGGGGCTGGCCAGTGGTCTGTGATAAGCGCCGTAACAGAAACAGTATGGGTATGAGGTGCGT  
AAAGTGACACTTCAGGCACGGTGGTGTGTGCTGAGCATCTTTACCGCAAAACCTGAAGCTTGGGCCTA  
GCCGCCCTCCACTGGGGAGGCTCTGAACCTACTAGGCACCGACTCCGAGAGGCTGCTTAACCTTGTCTG  
CAGCTTCCATGAGGCTGGGGCTGCCTCTGCAACTGGCCATCACTCTCTACCTGCTGTACGAGCAGGTG  
GGCGTGGCCTTCTGGCTGGGTTAGTCTTGGCACTGCTCTGGTGCCTGTCAACAAAGTATCGCCACCC  
GAATCATGGCCAACAACAGGAGATGCTCCGGCACAAGGATGCACGGGTTAAGCTCATGACAGAGCTGCT  
GAGCGGCATTGAGTCTCAAGTTCTTCAAGTGGGAGCAGGCTCTGGGGACCGGTGAAGGCTTCCCGG  
ACCCAAGAGCTGGGACGGCTCCGCGTCATCAAATACCTGGATGCAGCCTGCGTGTACCTCTGGGCTGCTC  
TGCTGTAGTCTGTCATCGTCTTTCATCACCTACGTCCTCTGGGGACCACTCACTGCCACCAA  
GGTGTTCAGCACTGGCACTTGTGCATGCTCATTCTCTCAACAACCTCCCTGGGTGATCAAT



[View online »](#)

GGTCTCTTGAATCCAAAGTATCCCTGGACCGGATCCAGCGTTTCTCGACCTTCCAAGCTATAGCCCTG  
AGGCCTACTACAGTCCTGATCCCCCACAGAGCCATCCACAGTACTGGAGCTGCATGAAGCCCTGTTCTC  
CTGGGACCCAACCTGGAACAAGCCAGAAGACCTTCATCAGTCACCTCCAAGTAAAAAGGGCATGCTGGT  
GGCATCGTGGGAAAGGTCGGCTGTGGGAAGAGTTCAGTCTGGCTGCCATCACTGGGGAGCTCCACAGGC  
TGTGTGGTGGGTGGCAGTGTGACACCTGTCCAAGGCTTTGGACTGGCCACTCAGGAGCCCTGGATCCA  
GAGGCCTGCGCCCTCAATGATGATCTCAGCATCCTGCCCTGCTGGAGACCAGACAGAGTTGGAGAGAAG  
GTGTGACCCTCAGCGGGGACAGAGGGCCGATTGCCCTTGCCCGAGCTGTCTACCAGGAAAAACACT  
CTACCTCCTTGATGACCTCTGGCTGCTGTGGATGCAGATGTGGCCAACCACTGTTGCACAGGTGCATC  
CTGGGAGTGTGGCCACACCACCCGGCTGCTGTGACCCATCGCACCGAGTACCTGGAGAGGGCTGACC  
TGGTGTGTTGATGGAGGCTGGGCGCTGGTCCGAGCAGGGCCTCCCTCAGAGATTCTGCCATTGGTGCA  
AGCTGCCCCACAGCCTTGCTGACAAGGAACAAGTACTGACTCAGGTCACTCCCGTCTGTACACAAC  
CTAGAGAAAACCACAGAGGAGCTGGACGTGGCGCAGAACACATCCGGTCGCTCGTGCAGGAGGAGAGCA  
AAAGCGAGGGCGCGTGGCCCTGCACGTGTACCGAGCATACTGGAGGGCCATGGGCAGTGGCCTGGCCAC  
CGCCATCCTCATCTCCCTGCTCCTCATGAAGCCACGCGCAACGGTGTGATTGGTGGCTCGCTCACTGG  
CTCTCTCAGCTGAAGGCAGGCAGAAATAGCTCCGAGGAGCGTCCCGCTTCTCCAGCCCAGCTCCATGG  
GATTCTTCTCCCCACGGCTGCTCCTTCTCCCCCGAAACCTCTACATCCCCTGCACAAGCTACTTC  
CAATGGCTCCTCAGAGCTCCACTTCTACCTCACCGTGTACGCAACCATTGCTGGTGTCAATTCCTCTGC  
ACCCTGCTCCGGGCTGTGCTCTTTGACGAGGTGCCCTTCAAGCAGCTGTAGCTACACCACCGTCTAC  
TGCACCGACTGCTCATGGCACCAGTACTTTCTATGACTCCACACCTTCCGGCCGGGTCTTGAACCGCTT  
CTCCTCAGACGTGCGCTGTGTAGACGACAGCCTGCCCTTCTCCTCAACATCCTGCTGGCCAATTCTGTA  
GGGCTGCTGGGCTCCTCGTGTCTGGTCTGGTCTGCCCTGGCTGCTCCTGCTGCCCTCTGAGCAGCCT  
GCTTCATCTACTACGGCGTGCAGCGCCGCTACAGGGCTTCTTCCGGGAGCTGCGGCGTCTGGCAGCCT  
CACCTTGTCTCCGCTCTACTCCACCTGGCTGACACCCTGGCAGGCCTCCCTGTGCTCCGGCTGCAGGG  
GCCACTTACAGGTTTGGAGGAGAACCAGCGACTCTTGAGCTGAACCAGAGGTGCCAGTTTGCTTCT  
ATGCCACGATGCAGTGGTGGACATTCGGCTGCAGCTCATGGGGCAGCGGTGGTGCAGCGCCATTGCGGG  
CATTGCCCTGGTGCAGCACCAGCAGGGCCTTGCCAACCCAGGGCTGGTGGGCTCGTGTCTTCTTATGCA  
CTGTCTCTGACGGGCTGCTCTCCGGCTGGTGGAGCAGCTTACACAGACGGAAGCCATGATGGTGGAGC  
TTGAACGACTGGAGGAATATTCTGTGACATTCACAGGAGCCCCATGGCCAGCCACCACAGTACCCCCA  
CCAGCGGTGAGCTGGCTGACCCAGGGAAGTGTGGAGTCCAGGATGTGGTGTGATCGGCCAGGG  
CTGCCAATGCCCTAGACGGGGTACCTTTCGCGTGGAGCCTGGCGAGAAGCTGGGCATTGTGGGCCGA  
CAGGCTCCGGCAAGTCTTCCCTGTTTCTGGTGTCTTCCGGCTGCTGGAGCCAGTGCAGGGCAAGTGT  
CCTGGACGGTGTGGACACCAGCCAGCTGGAGCTGGCTGAGCTCAGATCCCAGCTGGCTGTATCCCCAG  
GAGCCCTTCTGTTCAGTGGGACCGTTCGGGAGAACCTGGACCCCAGGGCTTACATGAGGACAGGGCCC  
TGTGGCAAGCCCTAGAACAGTGGCACCCTGAGTGGGTGGCCATGGCCATAGGAGGCTGGATGGGGAGCT  
GGGCGAAAGGGGCAGGGACTTGTCCCTAGGGCAGAGACAGCTGCTATGCCTGGCAAGGGCTTCTCACA  
GATGCTAAGATCTTGTGATTGACGAGGGCACGGCAAGTGTGGACCAGAAGACAGACCAGCTGCTCCAGC  
AAACCTCTGCAGACGCTTTGCCAACAAGACAGTGTGACCATTGCCACAGGCTCAACACGATCCTAAA  
CTCTGACCGGGTGTGGTGTCTCAAGCCGGGAGGGTGGTGAAGTGGACTCCCCCTCAGCCCTGCCAAC  
CAGCCCCATTCCCTGTTTAGGCAGCTCCTGCAGAGCAGCCAGCAGGGGGCCCACTCCCTTCTGCCGCT  
GC

ACGCGTACGCGGCCGCTCGAGCAGAACTCATCTCAGAAGAGGATCTGGCAGCAATGATATCCTGGATT  
ACAAGGATGACGACGATAAGGTTTAA

**Protein Sequence:** >RR202266 representing NM\_001108201  
 Red=Cloning site Green=Tags(s)

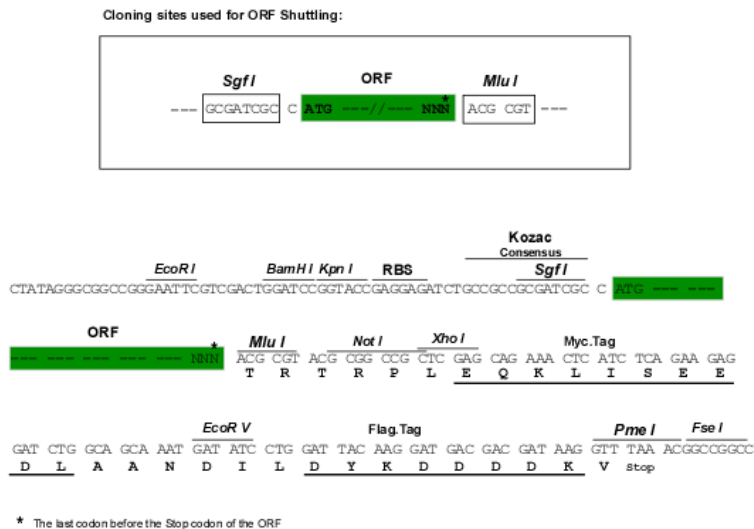
```
MEGLLAQLCGTDAARPLPLWEGDTTGHCFQVLVSVLPHALLAVLSACHLGTPTNNIIQPFNPGWRLRL
TASFLLSVFPLDLLPVVLPVSHPGPLWLEVLACVAVAWFTHSLALWALVHSPHGHSRGPLALALAA
FLPTPALVLTLLWHCQRGTFPLPLPGPLGRVCLLILQLAAVLAAYGLGWAAPGGPREPWTHDPFLSPESQ
EREVAEDGESWLSRF SYAWLAPLLARGVREGELRQPQDTCRLPRRLHPAYLARAFQAHWKEGAQLWRALYG
AFGCCYIALGLLKMGVMTLGFSGPLLLSLLVGFLEEGQEPLSHGLLYVLGLASGVI SAVLQNYGYEVR
KVTLQARVAVLSILYRKTLLKLGPSRPPTGEVNLGTDSERLNFAAGSFHEAWGLPLQLAITLYLLYEQV
GVAFLAGLVLALLVPVNVKIATRIMANNQEMLRHKDARVKLMTTELLSGIRVLKFFRWEQALGDRVKACR
TQELGRLRVIKYLDAAACYLWALPVVICIVIFITYVLLGHQLTATKVFTALALVHMLILPLNNFPWVIN
GLLESKVS LDRIQRFLDLPSYSPEAYSPDPPTSTVLELHEALFSDWPTGTSQKTFISHLQVKKGMLV
GIVGKVGCGKSSLLAAITGELHRLCGWVAVSDL SKGFGLATQEPWIQCATIRDNVLF GKTFDAQLYREVL
EACALNDDL SILPAGDQTEVGEKGVTL SGGQRARIALARAVYQEKTYLLDDPLAAVDADV ANHLLHRCI
LGVLGHTTRLLCTHRTEYLERADLVLLMEAGRLVRAGPPSEILPLVQAAPTALADKEQVTD SGQSPSVHN
LEKTTEELDVAQNTSGRLVQEESEKSEGAVALHVYRAYWRAMGSLATAILISLLMQATRNGADWWLAHW
LSQLKAGRNSSEERPASSSPRSMGFFSPRLLLFSPGNLYIPLHKATSNSSDVFHYLTVYATIAGVNSLC
TLLRAVLFAAGALQAAASLHRRLLHRRLLMAPVTFYDSTPSGRVLRNFSSDVACVDDSLPFLNILLANSV
GLLGLLAVLGSGLPWL LLLLPLSFIYGVQRRYRASFRERLRLGSLTSPLYSHLADTLAGLPVLRAG
ATYRFEENQRLELNQRCQFASYATMQWLDIRLQLMGAAVVSAIAGIALVQHQQGLANPGLVGLVLSYA
LSLTGLL SGLVSSFTQTEAMMVSVERLEEYSCDIPQEPHGQPPQSPHQVSWLTQGSVEFQDVVLVYRPG
LPNALDGVTFRVEPEGKLGIVGRTGSGKSSFLVLFRLLEPSAGQVLLDGVDTSQLLELAELRSQ LAVIPQ
EPFLFSGTVRENLDPQGLHEDRALWQALEQCHLSEVAMAI GGLDGELGERGRDLSLGRQRLCLARALLT
DAKILCIDEATASVDQKTDQLLQQTICRRFANKTVL TIAHRLNTILNSDRVLLVQAGRVVELDSPALRN
QPHSLFRQLLQSSQQAHSPLAAC
```

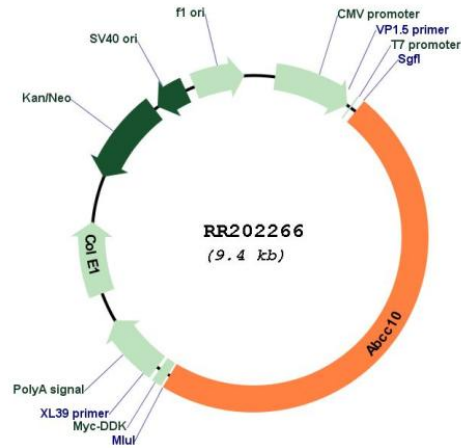
TRTRPLEQKLISEEDLAANDILDYKDDDDKV

**Restriction Sites:**

Sgfl-MluI

**Cloning Scheme:**



**Plasmid Map:**


**ACCN:** NM\_001108201

**ORF Size:** 4482 bp

**OTI Disclaimer:** The molecular sequence of this clone aligns with the gene accession number as a point of reference only. However, individual transcript sequences of the same gene can differ through naturally occurring variations (e.g. polymorphisms), each with its own valid existence. This clone is substantially in agreement with the reference, but a complete review of all prevailing variants is recommended prior to use. [More info](#)

**OTI Annotation:** This clone was engineered to express the complete ORF with an expression tag. Expression varies depending on the nature of the gene.

**Components:** The ORF clone is ion-exchange column purified and shipped in a 2D barcoded Matrix tube containing 10ug of transfection-ready, dried plasmid DNA (reconstitute with 100 ul of water).

**Reconstitution Method:**

1. Centrifuge at 5,000xg for 5min.
2. Carefully open the tube and add 100ul of sterile water to dissolve the DNA.
3. Close the tube and incubate for 10 minutes at room temperature.
4. Briefly vortex the tube and then do a quick spin (less than 5000xg) to concentrate the liquid at the bottom.
5. Store the suspended plasmid at -20°C. The DNA is stable for at least one year from date of shipping when stored at -20°C.

**RefSeq:** [NM\\_001108201.1](#), [NP\\_001101671.1](#)

**RefSeq Size:** 4859 bp

**RefSeq ORF:** 4485 bp

**Locus ID:** 316231

**Cytogenetics:** 9q12

**MW:** 163.3 kDa