

Product datasheet for **RR202214**

Prepl (NM_001010951) Rat Tagged ORF Clone

Product data:

Product Type:	Expression Plasmids
Product Name:	Prepl (NM_001010951) Rat Tagged ORF Clone
Tag:	Myc-DDK
Symbol:	Prepl
Synonyms:	RGD1310143
Mammalian Cell Selection:	Neomycin
Vector:	pCMV6-Entry (PS100001)
E. coli Selection:	Kanamycin (25 ug/mL)



[View online »](#)

ORF Nucleotide
Sequence:

>RR202214 representing NM_001010951
Red=Cloning site Blue=ORF Green=Tags(s)

TTTTGTAATACGACTCACTATAGGGCGGCCGGAATTCGTGACTGGATCCGGTACCGAGGAGATCTGCC
GCCCGCATCGCC

ATGGATGCATTTGAAAAAGTGAGGACAAGGCTAGAAACACAGCCACAGGAAGAGTACGAAATCGTCAATG
CGGAGATTAACATGGCGGCTTTGTCTATTATCAAGAAGTTGCTGCTTGGTCCGTTCCAAAGACGAAGA
AGCTGACAGTGATAATTATGAAGTTTTATTCAACCTGGAAGAAGTAAACTGGAGCAGCCCTTCATCGAT
TGCATCCGAGTTGCTCCTGATGAGAAGTACGTGGCTGCTAAGATAAGGGCGGAGGATTCTGAAACCTCCA
CCTGCATAGTGGTGAAGCTCAGCGATCAGCCTGCCATGGAAGCCTCTTTCCCAACGTGTCCAGCTTTGA
ATGGGTGAAGGATGAAGAAGATGAAGATGTCTTATTCTACACCTCCAGAGGAACCTTCGCTGTCACGAT
GTGACCGAGCCACGTTTGGTGACAACAAACGCAATGAGCGGTTCTACACAGAGAAAGACCCAGCTATT
TTGTTTTCTCTATCTTACAAAAGACAGTCGTTTCTCACCTGAATATCATGAACAAGACGACTCCGA
GGTGTGGCTCATCGATGGCCTGAGCCCGTGGGACCCCAATGCTCATTGAGAAGAGAATCCATGGGATG
CTTTACTATGTTGAGCATCGAGATGACGAATTGTACATCCTGACTAATGTTGGAGAACCTACAGAATTCA
AGCTGATGCGGACTGCAGCTGACGCCCTGCTATTATGAATTGGGATTTATTTTTACAATGAAGAGAAA
CACCAAGTTGTAGACTTGGACATGTTAAGGACCACTGCGTTCTGTTCCGAAACACAGCAATCTCCTC
TATGTTAATGTGATTGGTCTGGCTGACGACTCCGTCGCTCTCTAAAGCTGCCTCCTTGGGCTGTGGAT
TCATAATGGATACAAATCTGACCCGAAGAAGTCCCTTCCAGCTTTGCTCCCAATAAGACCCCAAAA
ATATTACATACAAATTTGAGAGGGCAAACTGTTTGGAGAACTGGTACGAAGATCCAATCACAAAG
ACCAGTCGAGTTTTACGCATAGAAGCCAAAAGCAAGGATGGAAGCTAGTGCCCATGACGGTTTTTCACA
AGACGGATTCTGAGGACTTGCAGAGGAAGCCTCTCTTGGTGCACGTATATGGAGCTTACGGAATGGATCT
GAAGATGAACTTCAGGCCTGAAAGGCGGGTCTTGGTGGATGATGGGTGGATCTTAGCATATTGCCATGTT
AGGGGTGGTGGCGAGCTGGGTCTCCAGTGGCATGCTGATGGCCGTCTAACTAAAAAGCTCAATGGCCTGG
CTGACTTAGAGGCTTGCATTAAGACGCTTACAGCCAGGGCTTTTCTCAGCCAGCCTAACCAACGCTGAG
CGCTTTCAGTGTGGAGGTGTGCTTGTGGGAGCACTGTGTAAGTCTAAGCCAGAGCTCCTGAGAGCAGTG
ACCCTGGAGGCCCTTTCTTGGATGTTCTCAACACCATGATGGACACCACACTTCCGCTGACACTGGAAG
AGTTGGAAGAATGGGGAAACCTTCGTCCGATGAGAAACACAAGAAGTACATAAAGCGCTACTGTCCATG
CCAGAATATGAAGCCACAGCATTACCCTTCAGTTCATATCACAGCGTATGAAAACGACGAGCGAGTGCCG
CTGAAAGGAATCGTGAACACACCGAGAAGCTTAAGGAGCCGTCGAGAGCACAGCAAGGGAGCAGGGG
AAGGCTATCAGCCCCCAACATTGTTTTAGATATTCAGCCTGGAGGGAACCATGTGATTGAGGATTCTCA
CAAAAAGATCACAAACCAGATGAAATTCCTGTATGATGAAGTGGACTTGACAGCACTGATGCTTTCGAG
GCTCTGAAGAAGTACCTAAAAGTC

ACGCGTACGCGGCCGCTCGAGCAGAACTCATCTCAGAAGAGGATCTGGCAGCAATGATATCCTGGATT
ACAAGGATGACGACGATAAGGTTTAA

Protein Sequence: >RR202214 representing NM_001010951
 Red=Cloning site Green=Tags(s)

MDAFEKVRTRLETQPQEEYIVNAEIKHGGFVYQEGCCLVRSKDEEADSDNYEVLFNLEELKLEQPFID
 CIRVAPDEKYVAAKIRAEDSETSTCIVVKLSDQPAMEASFPNVSSFEWVKDEEDEDVLFYTFQRNLRCHD
 VYRATFGDNKRNERFYTEKDPSTYFVFLYLTKDSRFLTLNIMNKTTSEVWLIDGLSPWDPPLIQKRIHGM
 LYYVEHRDDEL YILTNVGEPTFEKLMRTAADAPAIMNWDLFFTMKRNTKVVDLDMFKDHCVLFLKHSNLL
 YVNVIGLADDSVRSCLKPPWACGFIMDTNSDPKNCFQLCSPIRPPKYTYKFAEGKLFEEFGHEDPITK
 TSRVLRIEAKSKDGKLVPMTVFHKTDSEDLQRKPLL VHVYGYGMDLKMFRPERRVLDVGGWILAYCHV
 RGGGELGLQWHADGRLTKKLNGLADLEACIKTLHSQGSQPSLTTL SAFSAGGVLVGALCNSKPELLRAV
 TLEAPFLDVLNTMDDTTLPLTLEEEWGNPSSDEKHKNIKRYCPCQNMKPQHYPVSHITAYENDERVP
 LKGI VNYTEKLKEAVAESHKGAGEGYQPPNIVLDIQPGGNHVIEDSHKITTQMKFLYDELGLDSTDAFE
 ALKKYLKV

TRTRPLEQKLISEEDLAANDILDYKDDDDKV

Restriction Sites:

Sgfl-MluI

Cloning Scheme:



ACCN: NM_001010951

ORF Size: 1914 bp

OTI Disclaimer: The molecular sequence of this clone aligns with the gene accession number as a point of reference only. However, individual transcript sequences of the same gene can differ through naturally occurring variations (e.g. polymorphisms), each with its own valid existence. This clone is substantially in agreement with the reference, but a complete review of all prevailing variants is recommended prior to use. [More info](#)

OTI Annotation: This clone was engineered to express the complete ORF with an expression tag. Expression varies depending on the nature of the gene.

Components: The ORF clone is ion-exchange column purified and shipped in a 2D barcoded Matrix tube containing 10ug of transfection-ready, dried plasmid DNA (reconstitute with 100 ul of water).

Reconstitution Method:

1. Centrifuge at 5,000xg for 5min.
2. Carefully open the tube and add 100ul of sterile water to dissolve the DNA.
3. Close the tube and incubate for 10 minutes at room temperature.
4. Briefly vortex the tube and then do a quick spin (less than 5000xg) to concentrate the liquid at the bottom.
5. Store the suspended plasmid at -20°C. The DNA is stable for at least one year from date of shipping when stored at -20°C.

RefSeq: [NM_001010951.1](#), [NP_001010951.1](#)

RefSeq Size: 2219 bp

RefSeq ORF: 1917 bp

Locus ID: 298771

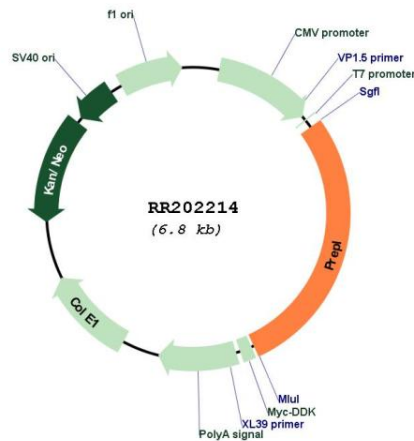
UniProt ID: [Q5HZA6](#)

Cytogenetics: 6q12

MW: 73.2 kDa

Gene Summary: Probable serine peptidase whose precise substrate specificity remains unclear. Does not cleave peptides after a arginine or lysine residue. May play a role in the regulation of synaptic vesicle exocytosis.[UniProtKB/Swiss-Prot Function]

Product images:



Circular map for RR202214