

Product datasheet for RR202189

Phkb (NM_001014152) Rat Tagged ORF Clone

Product data:

Product Type:	Expression Plasmids
Product Name:	Phkb (NM_001014152) Rat Tagged ORF Clone
Tag:	Myc-DDK
Symbol:	Phkb
Vector:	pCMV6-Entry (PS100001)
E. coli Selection:	Kanamycin (25 ug/mL)
Cell Selection:	Neomycin
ORF Nucleotide Sequence:	>RR202189 representing NM_001014152 Red=Cloning site Blue=ORF Green=Tags(s)

TTTTGTAATACGACTCACTATAGGGCGGCCGGGAATTCGTCGACTGGATCCGGTACCGAGGAGATCTGCC
GCCGCGATCGCC

ATGGCGGGGGAAGAGGGACTCATGTCTGAAGTAAGCTGGAAGCTCTTGGAAACGACGAGCCCGGGCCAAGC
GCTCAGGCTCAGTTTATGAACCTCTTAAAAGCATTAACTTCCAAGACCTGATAATGAAACTCTATGGGA
TAAGTTGGATCATTATTACAGAATTGTCAAGTCAACGATGCTGACATATCAAAGCCCACTACAGGTCTC
TTTCTACTAAAACCTTGTGGTGGAGATCAGAAGTCCAAAAGTGCATGAGAGCCTGTACTGTCTGCGGGTG
CTTGGGCTTGGCTCTGGCGTACAGGCGCATTGATGATGACAAGGGAAGGCCATGAGCTGGAGCACTC
GGCCATAAAGTGTATGAGAGGAGTTCTCTACTGCTACATGCGGCAGGCTGATAAGGTCCAGCAGTTCAAG
CAGGATCCCCGGCCACGACGTGTCTACTCTGTCTTCAATGTGCACACTGGGGATGAAGTGTCTCTCT
ATGAAGAATATGGCCATCTTACAGATAAATGCAGTCTCACTCTTTCTCTTTACCTGGTGGAAATGATTT
CTCAGGCTCCAGATAATCTATAACACGGATGAGGTCTCTTTTATTCAAACCTTGTGTTTTGTGTAGAG
AGAGTTTACCGTGTCCCGACTTCGGTGTCTGGGAAAGAGGAAGCAAATAAACAACGGCAGCACAGAAC
TGCACTCGAGCTCTGTTGGTTTGGCAAAAGCAGCCTTAGAAGCGATTAATGGATTTAACCTTTTGGAAA
CCAGGGCTGTTCTTGGTCAAGTATATTCGTGGATCTCGATGCTCAACACCGCAACAGGCAGACGTTGTGT
TCACTGTTACCCAGAGAATCACGCTCTCATAACACAGATGCTGCCCTGCTCCCCTGCATACCTACCCCCG
CCTTTGCCCTGGACGATGAAGCTCTGTTAGCCAGACACTCGATAAAGTGATAAGAAAATTTAAAGGGAA
ATATGGATTTAAGCGTTTCTTGGCAGATGGGTACAGAACGCCCTGGAAGACCCCAACAGACGCTACTAC
AAACCAGCGGAGATTAAGCTGTTTATGATGGCATCGAATGTGAATTTCCCATATTCTTCTTACCTGATGA
TCGATGGTGTTTTAGAGGCAATCTTGAACAAGTCAAGGAATATCAGGACCTGTTGACACCTTTGCTTCA
CCAGACCACAGAAGGATATCCTGTTGTACCAAAGTACTATTATGTGCCAGCTGACTTTGTAGAATATGAA
AAAAGAAACCCCTGGTAGTCAGAAGCGGTTTCTAGTAAGTGTGGCCGTGATGGGAAATTTGTTCTTTGGG
GACAAGCTCTTTATATCATTGCAAAACCTAGCTGATGAGTTAATCAGTCTAAAGACATTGACCCCGT
CCATCGCTTTGTCCCACTTCAAGATCAACGTAACGTGAGCATGAGATTCTCTAATCAGGGCCCACTGGAA
AATGACTTGGTGGTTTATGTGGCACTTGTAGCAGAAAGCCAACGCCTTCAGGTCTTCTCAATACTTACG
GGATTCAGACTCAAACGCCCCAGCAGGTGGAGCCTATTAGATCTGGCCTCAGCAGGAGCTCGTAAAGC
TTATTTCCACCTGGGTATCAATGAAAAGTTGGGCTGTCTGGAAGGCCAGATAGGCCATTGGCTGCCTT



GGTACTTCAAAGATTTACCGCATCTAGGAAGGACCGTGGTTTGTACCCTATCATCTTCGACCTCAGTG
 ATTTCTACATGTCTCAGGACGTTCTCTGCTCATAGATGACATAAAGAATGCACTACAGTTCATTAAGCA
 GTATTGGAAAAATGCATGGACGCCACTTTTTCTTGTTCATCCGGGAAGACAACATAAGAGGTAGCAGA
 TTCAACCCCATATTAGACATGCTGGCAGCCTTTAAAAAGGGGATAAATGGAGGAGTCAAAGTTTATGTTG
 ACCGTTTACAGACATTGATATCTGGAGCTGTAGTAGAACAGCTTGACTTCTGCGGATTAGCGACACAGA
 AAAGCTTCCAGAGTTTAAAGAGCTTTGAAGAACTAGAATTTCCCAAGCATTCAAAGTCAAACGACAGAGC
 AGTACTGCAGATGCTCCTGAACCTGCGACAGGACCAGACATCACCATCACAGAGTGGAAAAACAAATCCA
 CCCACGAAATCCTTCAGAAGCTTAATGACTGCGGTTGTCTGGCTGGCCAAACCATCTCTGGGTATACT
 GCTCAAAAGAGAGGGCCCTAACTTCATCACGATGGAAGGAACTGTGTCTGATCACATTGAGAGGGTGTAC
 AGAAGAGCTGGCAGCAAAAAGCTTTGGTCGTTGTACGCCGTGCAGCAAGTCTTTTAAATAAAGTAGTGG
 ACAGCCTGGCCCATCCATTACTAATGTTTTAGTGCAGGGCAAACAGGTAACCCTAGGTGCCTTTGGACA
 CGAAGAGGAGGTCATCTAATCCACTATCTCCAAGAGTGATTAAGAACATCATCTATTATAAGTGAAC
 ACCCATGATGAGAGGGAGGCTGCTATTAGCAAGAGCTGGTCATCCATATTGGCTGGATCATCTCCAACA
 ACCCCGAGCTGTTCAAGTGGCATGCTGAAAATCAGAATTGGGTGGATCATCCATGCCATGGAGTACGAACT
 GCAGATCCGTGGCGGGGATAAGCCAGCTGTGGACTTGTACCAGCTCTCGCCAGTGAAGTAAAGCAGCTG
 CTGCTCGACATCCTGCAGCCTCAGCAGAGTGGGAGATGTTGGCTGAATAGACGTCAGATTGATGGGTGAC
 TGAATAGAACACCCCCAGGATTCTACGACCCGCTGTGGCAGATCCTGGAGCGCACACCTAATGGTATCGT
 TGTAGCTGGCAAGCATTGGCCACAGCAACCAACCTTGTGAGATGACCATGATGAGATGAATTTTTCT
 CTCCTTGTGAAGATATGTTGGGAAACATTGACCAGCCAAAGTATAGACAGATCATTGTAGAGTTACTAA
 TGGTTGTATCCATTGTGCTGGAAAGAAATCCTGAGCTAGAATTTCAAGACAAAGTGGATCTGGACAACT
 GGTCAAAGAAGCGTTTCATGAGTTTCAAAGATGAGAGCCGGCTAAAAGAAATCGAAAAGCAAGTAAGT
 GGAGAGGCCCGTGTCCCACAGAACGCTTTCATTGTTTCCACTGTTGAAATCCTCTCTAATCTTCCCACTT
 TCCAGACAGATGGACAGAGCACAAAAGAGGATGCTCTACAAGCAGTCAGGCTTACTGAGGAATTAATATT
 GCTTTTTAGC

ACGCGTACGCGGCCGCTCGAGCAGAACTCATCTCAGAAGAGGATCTGGCAGCAATGATATCCTGGATT
 ACAAGGATGACGACGATAAGGTTTAA

Protein Sequence:

>RR202189 representing NM_001014152

Red=Cloning site Green=Tags(s)

MAGEEGLMSEVSWKLLERRARAKRSGSVYEPKLSINLPRPDNETLWDKLDHYRIVKSTMLTYQSPTTGL
 FPTKTCGGDQKSKVHESLYCAAGAWALALAYRRIDDDKGRTHELEHSAIKMRGVLVYCMRQADKVQQFK
 QDPRPTTCLHSVFNVTGDEVLSYEEYGHQINAVSLFLLYLVEISSGLQIYNTDEVSFIQNLVFCVE
 RYYRVPDFGVWERSKYNNNGSTELHSSVGLAKAALAEINGFNLFNGQCSWSVIFVDLDAHNRNRQTL
 SLLPRESRSHNTDAALLPCITYPAFALDDEALFSQTLDKVIRKLGKYGKFRFLRDGYRTPLEDNRRYY
 KPAEIKLFDGIECFPIFFLYLMDGVFRGNLEQVKEYQDLLTPLLHQTTGYPVVPKYYYYPADFVEYE
 KRNPQSQRFPNSNCGRDGKFLWGQALYI IAKLLADELISPDKIDPVHRFVPLQNRNVS MRFSNQGLE
 NDLVVHVALVAESQRLQVFLNTYGIQTQTPQQVEPIQIWPQQELVKAYFHLGINEKLGLSGRPDRPIGCL
 GTSKIYRILGRVVCYPPIFDLSDFYMSQDVLLIIDDIKNALQFIKQYWKMHGRPLFLVLIREDNIRGSR
 FNPILDMLAAFKKGIIGGVKVVHVDRLQTLISGAVVEQLDFLRISDTEKLEPKSFEELFPKHSKVKRQS
 STADAPELRQEPDITITEWKNKSTHEILQKLNDCGLAQQTILLGILLKREGPNFITMEGTVSDHIERVY
 RRAGSKKLWSVRRASLLNKVVDLAPSLITNVLVQKQVTLGAFGHEEEVISNPLSPRVIKNIYYKCN
 THDEREAVIQQELVIHIGWII SNNPELFSGMLKIRIGWIIHAMEYELQIRGGDKPAVDLYQLSPSEVKQL
 LLDILQPQQSGRCWLNRRQIDGSLNRTPPGFYDRVWQILERTPNGIVVAGKHLPPQPTLSDMTMYEMNFS
 LLVEDMLGNIDQPKYRQIIVELLMVVSI VLERNPELEFQDKVDLTKLVEAFHEFKQDESRLKEIEKQVS
 GEARVPPQNAFIVSTVEILSNLPTFQTDGQSTKEDALQAVRLTEELILLFS

TRTRPLEQKLI SEEDLAANDILDYKDDDDKV

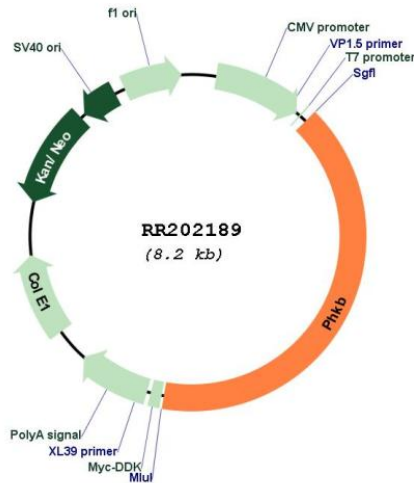
Restriction Sites:

Sgfl-MluI

Cloning Scheme:



Plasmid Map:



ACCN: NM_001014152

ORF Size: 3300 bp

OTI Disclaimer: The molecular sequence of this clone aligns with the gene accession number as a point of reference only. However, individual transcript sequences of the same gene can differ through naturally occurring variations (e.g. polymorphisms), each with its own valid existence. This clone is substantially in agreement with the reference, but a complete review of all prevailing variants is recommended prior to use. [More info](#)

OTI Annotation: This clone was engineered to express the complete ORF with an expression tag. Expression varies depending on the nature of the gene.

Components:	The ORF clone is ion-exchange column purified and shipped in a 2D barcoded Matrix tube containing 10ug of transfection-ready, dried plasmid DNA (reconstitute with 100 ul of water).
Reconstitution Method:	<ol style="list-style-type: none">1. Centrifuge at 5,000xg for 5min.2. Carefully open the tube and add 100ul of sterile water to dissolve the DNA.3. Close the tube and incubate for 10 minutes at room temperature.4. Briefly vortex the tube and then do a quick spin (less than 5000xg) to concentrate the liquid at the bottom.5. Store the suspended plasmid at -20°C. The DNA is stable for at least one year from date of shipping when stored at -20°C.
RefSeq:	<u>NM_001014152.1</u> , <u>NP_001014174.1</u>
RefSeq Size:	3630 bp
RefSeq ORF:	3303 bp
Locus ID:	361377
Cytogenetics:	19p11
MW:	125.9 kDa
Gene Summary:	expression in regenerating muscle may be correlated with that of other phosphorylase kinase subunits [RGD, Feb 2006]