

## Product datasheet for **RR202188**

### Gde1 (NM\_032615) Rat Tagged ORF Clone

#### Product data:

**Product Type:** Expression Plasmids  
**Product Name:** Gde1 (NM\_032615) Rat Tagged ORF Clone  
**Tag:** Myc-DDK  
**Symbol:** Gde1  
**Synonyms:** Mir16  
**Vector:** pCMV6-Entry (PS100001)  
**E. coli Selection:** Kanamycin (25 ug/mL)  
**Cell Selection:** Neomycin  
**ORF Nucleotide Sequence:** >RR202188 representing NM\_032615  
**Red=Cloning site Blue=ORF Green=Tags(s)**

TTTTGTAATACGACTCACTATAGGGCGGCCGGAATTCGTCGACTGGATCCGGTACCGAGGAGATCTGCC  
GCC**GCGATCGCC**

ATGTGGCTGTGGGAGGACCAGGGCGGCCTCTGGGCCCTTCTTTTCGTGCTGGTGTCTGCTGGTGG  
TGACGCGCAGCCCTTCAACGCCTGTGTGCTCACTGGCAGCCTACCTCCTGCTGCGGTCTTTCAGCTT  
CGAGCCGGTGCCGTCCC GCCGGGCCCTGCAGGTGCTCAAGCCCCGTGACCGCGTGTCCGCCATCGCCCA  
CGCGGGCGGACCCACGACGCGCCCGAGAACACGCTGGCGGCCATCCGGCAGGCAGCTAAGAATGGAGCAA  
CAGGTGTGGAGCTGGACATCGAGTTACTTCTGATGGAGTTCCTGTCTTGATGCACGATAACACAGTAGA  
TAGGACAACAGACGGGTCTGGCCGATTATGTGATCTGACATTTGAACAAGTTAGGAACTTAATCCTGCA  
GCAATCACAGACTCAGAAATGAGTTCCTGACGAAAGGATCCCCACCCTGAGGGAAGCAGTTACAGAGT  
GCCTCTGCCATAACCTCACCATCTTCTTCGATGTCAAAGCCATGCAGATATGGCTTCTGCTGCTCTAAA  
GAATATAACATGGAATTTCCCGAGCTGTACAACAACAGTATGGTCTGCTCATTCTTGCCGGAAGTCATC  
TATAAAATGAGACAAACAGATCAGAAGGTAATCACAGCCCTGACTCACAGGCCTTGGAGCCTGAGCCACA  
CTGGAGACGGGAAGCCTCGCTACAGCCTTTTGGAAAGCAGTCTGTGTTTGTGGTGTGGACATCTTGCT  
TGACTGGAGCATGACAATGTCTTGTGGTACCTGTGTGGGATTTACGCCCTCCTCATGCAGAAGGATTTT  
GTCTCCCCGACTATTTGAAGAAGTGGTCAAGCAAGGAATCCAGTTGTTAGTTGGACTGTCAATACCT  
TTGATGAAAAGAATTACTACGAGTCCCACCTTGGTCCAGCTACATCACTGACAGCATGCTGGAAGACTG  
TGCACCTCACTTC

**ACGCGT**ACGCGGCCGCTCGAGCAGAACTCATCTCAGAAGAGGATCTGGCAGCAATGATATCCTGGATT  
ACAAGGATGACGACGATAAGGTTTAA



[View online »](#)

Protein Sequence: >RR202188 representing NM\_032615  
 Red=Cloning site Green=Tags(s)

MWLWEDQGGLLPFSFVLVLLLVTTRSPFNACVL TGSLYLLRFFSFEPVPSRRALQVLKPRDRVSAIAH  
 RGGSHDAPENTLAAIRQAAKNGATGVELDIETSDGVPVLMHDNTVDRTTDGSGRLCDLTFEQVRKLNPA  
 ANHRLRNEFPDERIPTLREAVTECLCHNLTIFFDVKGHADMASAALKNIYMEFPQLYNNSMVCSFLPEVI  
 YKMRQTDQKVITALTHRPWLSHTGDGKPRYSVFWKQSVFVVDILLDWSMHNVLWYLCGISAFMLQKDF  
 VSPDYLLKKWSAKGIQVVSWTVNTFDEKNYYESHLGSSYITDSMLEDCAPHF

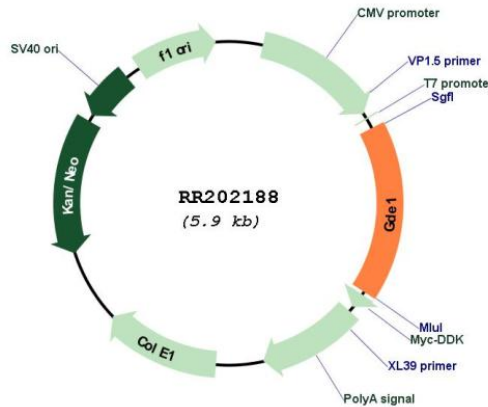
TRTRPLEQKLISEEDLAANDILDYKDDDDKV

Restriction Sites: SgfI-MluI

Cloning Scheme:



Plasmid Map:



ACCN: NM\_032615  
 ORF Size: 993 bp

<b>OTI Disclaimer:</b>	The molecular sequence of this clone aligns with the gene accession number as a point of reference only. However, individual transcript sequences of the same gene can differ through naturally occurring variations (e.g. polymorphisms), each with its own valid existence. This clone is substantially in agreement with the reference, but a complete review of all prevailing variants is recommended prior to use. <a href="#">More info</a>
<b>OTI Annotation:</b>	This clone was engineered to express the complete ORF with an expression tag. Expression varies depending on the nature of the gene.
<b>Components:</b>	The ORF clone is ion-exchange column purified and shipped in a 2D barcoded Matrix tube containing 10ug of transfection-ready, dried plasmid DNA (reconstitute with 100 ul of water).
<b>Reconstitution Method:</b>	<ol style="list-style-type: none"><li>1. Centrifuge at 5,000xg for 5min.</li><li>2. Carefully open the tube and add 100ul of sterile water to dissolve the DNA.</li><li>3. Close the tube and incubate for 10 minutes at room temperature.</li><li>4. Briefly vortex the tube and then do a quick spin (less than 5000xg) to concentrate the liquid at the bottom.</li><li>5. Store the suspended plasmid at -20°C. The DNA is stable for at least one year from date of shipping when stored at -20°C.</li></ol>
<b>RefSeq:</b>	<a href="#">NM_032615.2</a> , <a href="#">NP_116004.2</a>
<b>RefSeq Size:</b>	1555 bp
<b>RefSeq ORF:</b>	996 bp
<b>Locus ID:</b>	60418
<b>UniProt ID:</b>	<a href="#">Q9JL55</a>
<b>Cytogenetics:</b>	1q35
<b>MW:</b>	37.6 kDa
<b>Gene Summary:</b>	a putative membrane glycerophosphodiester phosphodiesterase; may mediate lipid metabolism and G protein signaling [RGD, Feb 2006]