

Product datasheet for **RR202181**

Nppa (NM_012612) Rat Tagged ORF Clone

Product data:

Product Type: Expression Plasmids
Product Name: Nppa (NM_012612) Rat Tagged ORF Clone
Tag: Myc-DDK
Symbol: Nppa
Synonyms: ANF; ANP; Pnd; RATANF
Mammalian Cell Selection: Neomycin
Vector: pCMV6-Entry (PS100001)
E. coli Selection: Kanamycin (25 ug/mL)
ORF Nucleotide Sequence: >RR202181 representing NM_012612.
Blue=ORF Red=Cloning site Green=Tag(s)

```
GCTCGTTTGTAGTGAACCGTCAGAATTTGTAAACGACTCACTATAGGGCGCCGGGAATTCGTCGACTG
GATCCGGTACCGAGGAGATCTGCCGCCGCGATCGCC
ATGGGCTCCTTCTCCATCACCAAGGGCTTCTTCTCTTCTGGCCTTTGGCTCCAGGCCATATTGGA
GCAAATCCCGTATACAGTGCGGTGTCCAACACAGATCTGATGGATTTCAAGAACCTGCTAGACCCTG
GAGGAGAAGATGCCGGTAGAAGATGAGGTATGCCTCCGACGGCCCTGAGCGAGCAGACCGATGAAGCG
GGGGCGGCACTTAGCTCCCTCTCTGAGGTGCCTCCCTGGACTGGGGAAGTCAACCCGTCTCAGAGAGAT
GGAGGTGCTCTCGGGCGGCCCTGGGACCCCTCCGATAGATCTGCCCTTTGAAAAGCAAACCTGAGG
GCTCTGCTCGCTGGCCCTCGGAGCCTGCGAAGGTCAAGCTGCTTCGGGGGTAGGATTGACAGGATTGGA
GCCAGAGCGGACTAGGCTGCAACAGCTCCGGTACCGAAGA
ACGCGTACGCGGCCGCTCGAGCAGAAACTCATCTCAGAAGAGGATCTGGCAGCAAATGATATCCTGGAT
TACAAGGATGACGACGATAAGGTTAAACGGCCGGC
```

Protein Sequence: >Peptide sequence encoded by RR202181
Blue=ORF Red=Cloning site Green=Tag(s)

```
MGSFSITKGFLLFLAFLWLPGHIGANPVYSAVSNLMDLDFKNLLDHLEEKMPVEDEVMPQALSEQTDEA
GAALSSLSEVPPWTGEVNPSSQRDGGALGRGPWDPSDRSALLKSKLRALLAGPRSLRRSSCFGGRIDRIG
AQSGLGCNSFRYRR
TRTRPLEQKLISEEDLAANDILDYKDDDDKV
```

Restriction Sites: SgfI-MluI



Cloning Scheme:



ACCN: NM_012612

ORF Size: 456 bp

OTI Disclaimer: The molecular sequence of this clone aligns with the gene accession number as a point of reference only. However, individual transcript sequences of the same gene can differ through naturally occurring variations (e.g. polymorphisms), each with its own valid existence. This clone is substantially in agreement with the reference, but a complete review of all prevailing variants is recommended prior to use. [More info](#)

OTI Annotation: This clone was engineered to express the complete ORF with an expression tag. Expression varies depending on the nature of the gene.

Components: The ORF clone is ion-exchange column purified and shipped in a 2D barcoded Matrix tube containing 10ug of transfection-ready, dried plasmid DNA (reconstitute with 100 ul of water).

Reconstitution Method:

1. Centrifuge at 5,000xg for 5min.
2. Carefully open the tube and add 100ul of sterile water to dissolve the DNA.
3. Close the tube and incubate for 10 minutes at room temperature.
4. Briefly vortex the tube and then do a quick spin (less than 5000xg) to concentrate the liquid at the bottom.
5. Store the suspended plasmid at -20°C. The DNA is stable for at least one year from date of shipping when stored at -20°C.

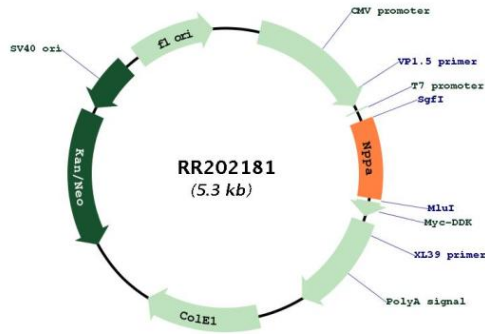
RefSeq: [NM_012612.2](#), [NP_036744.1](#)

RefSeq Size: 831 bp

RefSeq ORF: 459 bp

Locus ID: 24602
 UniProt ID: [P01161](#)
 Cytogenetics: 5q36
 MW: 16.6 kDa
 Gene Summary: peptide involved in the control of fluid volume and vascular function [RGD, Feb 2006]

Product images:



Circular map for RR202181