

Product datasheet for **RR202151**

Kdm6b (NM_001108829) Rat Tagged ORF Clone

Product data:

Product Type: Expression Plasmids
Product Name: Kdm6b (NM_001108829) Rat Tagged ORF Clone
Tag: Myc-DDK
Symbol: Kdm6b
Synonyms: Jmjd3
Vector: pCMV6-Entry (PS100001)
E. coli Selection: Kanamycin (25 ug/mL)
Cell Selection: Neomycin
ORF Nucleotide Sequence: >RR202151 representing NM_001108829
Red=Cloning site Blue=ORF Green=Tags(s)

TTTTGTAATACGACTCACTATAGGGCGCCGGGAATTCGTCGACTGGATCCGGTACCGAGGAGATCTGCC
GCC**CGGATCGCC**

ATGCCTCTGCCGACTCTCAGGCCCTCAGGAGAGGAAGGCCTCAGCCCTGGAGGCAAGCGCAGGAGAG
GCTGCAGCTCTGAACAGGAGCAGCGGCACTCGCTGCCTCACCCATCCATACCCAGCTCCTGCCTACAC
TGCTCATCGCCAGCCACCGGCTGGGCCCGGCCACCCCTTGGTCCAGGTCCCGACCCCCAGGAGCA
GAGAGCCATGGCTGCCTGCCACCCGTCGCCCGGAAGTGACCTTAGAGAGAGCAGAGTTCAGAGGT
CGCGGATGGACTCCAGCGTTTCACCAGCAGCATCTACCGCTGCGTGCCTTACGCCCTTCCCGGCCCC
TGGCCTCCCGGCCACCAGCAGCAGCAGTAGCAGTAACAACACTGGTCTTCGGGGTGTGGAGCCGAGC
CCAGGCATTCTGGCGTGACCATACCAAAACCTGCGTTGGAGATAGCCCTCACCGCCCGCTGG
GTCCCTCCGCACACAGCAGTCGGAACCATTTTGACAGCCCTGCTGCCGCTCCCACTTATCCCTACC
ATCCGGGACCCCTTCATCCCTCCACCCCATGTCTCGCTCTTGCGCCCTCCACCACCCCTGCTTGG
ATGAAGGGCTCAGCTGCCGCTCAGCTCGAGAGGATGGAGAGATCTTAGGGGAGCTCTTCTTTGGTGCTG
AGGGACCTCCCGTCTCCTCCCAACCCCTTCCCAACCGTGATGGCTTCTTGGGGCTCCAAACCCCGC
CTTTCTGTGGGCACTCAGGATTCGCATACCCCTCCCACTCCCAACCCAGCAGCAGCAGCAGCAGC
AGCAGCAGCAGCAACAGCCACAGCAGTAGTCTACTGGGCTGTGCCCTTCCACACCTCCCTATCTGG
CCAGAAGTATAGACCCCTTCCAGGCCATCTAGCCCAACACTGAGCTCCAGGACCCACCTCTCCACC
ACTGACTCTTGCCTGCCTCCAGCCCTCCCTCCTGCCACCAAAATACCTCAGGAAGCTTCAAGCGC
TCGGAGAGCCCCGGCCAGGGTCTCCTCCAAAGACCCCGAGGTGGGGCAGGGGCCACCTCCAGGCT
CTCTGAGTAAAGCCCCAGCCTGTGCCACCTGGGTTGGAGAGCTGCCTGCCGAGGCCGAGGCTCTT
TGATTTCCACCAACTCCACTGGAGGACAGTTTGAAGAGCCAGCTGAATCAAGATCCTCCTGATGGG
CTAGCTAACATCATGAAGATGCTGGATGAATCCATTAGAAAGGAGGAAGAGCAGCAGCAGCAAGAGCGAG
GGCGGTTCCCAACCCCACTCAAAGAGCCCTTTGCATCTCTACGGTCTTCACTTCCAGTGACACAGC
CCCAGCTGCCACCACTGCTGCTGCAACTCCCAACCAACCACCACCACCACCACCAAGAAGAGGAGAAG
AAGCCACCACCAGCCCTGCCACCACCACCGCTTAGCCAAGTTTCTCCACCACCCAGCCCCACCAC



[View online >](#)

CTCCACCAGCCAGCCAGCCAGCCAGCCTGCTCAAATCATTGGCCTCTGTTCTTGAGGGGCAAAAAGTACTGTTA
TCGGGGGACTGGAGCAGCCGTTTCAACCAGGCCCGGGTCCGTGCCCGCCACTCAGTATCCCCCTAGTCTCT
GCATCAGGTGCTACCGCCCCACCACCCACTTCAGTGGCCCTAGCGCCAGGGCTCCCCAAGCCCTCTG
TTTCTCGTCATCTCAGTTCTCTACCTCAGGTGGGCTTGGGTCCGAGAGCGCAGGGCAGGTGAAGAGCC
AGCACCAGGCCCGTGACCCCTGCCAGTTGCCCCACCTCTGCCGTGCCCCCTGCTCGTTCTGAGTCT
GAGGTGCTAGAAGAAATCAGTCGGGCTTGTGAGACCCTTGTAGAGCGGGTGGGCCGGAGTGCCATCAACC
CAGCAGACCCAGTGGACATAGCAGACCCAGTGGACAGTGGGACTGAGCCACAGCCGCTCTGTCACAGGC
CAAGGAGGAGAGTGGGGAGTGGCAGTGGCGGCAGCAGGTCCAGGTAGTGGTAAGCGTCGTCAGAAGGAG
CATCGGAGGCACAGACGGACCTGTAGGGACAGTGTGGTTCGTAGGCCCGTGAGGGGAGGGCCAAGGCCA
AGGCCAAGGCTCCCAAAGAAAAAGCCGAAGGGTGTGGGAACTTGGACTTGCAGAGTGAAGAGATCCA
GGGCCGGGAGAAGGCCCGCCTGATGTAGGTGGGGCTTCCAAAGTCAAGACGCCACAACCCAGCGCCC
CCACCTGCTCTGCCCTCTGCTCAGCCAACACCCCATCAGCTCCTGTCCCTGGGAAGAAGACTCGAG
AGGAAGCTCCAGGGCTCCAGGTGTGAGCCGTGCAGATATGCTGAAGCTTCGGTCGCTTAGTGAGGGGCC
ACCTAAGGAGCTGAAGATCAGGCTCATCAAGGTGGAGAGTGGGACAAGGAGACCTTCATCGCCTCTGAG
GTAGAAGAGCGGGGCTGCGCATGGCAGACCTCACCATCAGCCACTGCGTGTGATGTCATGCGTGCCA
GCAAGAATGCCAAGGTGAAGGGAAATTCGAGAGTCTACCTTTCCCTGCCAGTCTGTGAAACCGAA
GATCAACACTGAGGAGAAGCTGCCCGGGAAAACTCAACCCCTCTACACCCAGCATTTATTTGGAGAGC
AAACGAGACGCCTTCTCGCCGGTCTGTGTCAGTTCTGTACAGATCCCCGGAACCCCATCACTGTATCA
GGGGCCTGGCAGGTTCACTTCGGCTCACTTAGGCCTTTTTCCACCAAGACTCTGGTGGAGGCGAGCGG
TGAACACACAGTGGAGTCCGTACCCAAGTGCAGCAGCCCTCAGACGAGAAGTGGATCTGACAGGTACC
AGACAGATCTGGCCCTGTGAGAGCTCCCGTTCACACACCACATCGCTAAATATGCACAGTACCAGGCTT
CGTCTTCCAGGAGTCACTGCAGGAGGAAAAGAGAGTGGATGAGGAATCCGAGGAACCCAGACAGCAC
TACAGGAACCTCTCCAGCAGTGCACCAGACCCCAAGAACCATCACATCAAGTTTGGCACAACATC
GACCTGTCTGATGCCAAGAGGTGGAAGCCACAACCTACAGGAGCTGCTGAAACTGCCTGCCTTCATGCGAG
TAACATCCACAGGCAACATGCTTAGCCATGTGGGACACACCATCCTGGGCATGAACACCGTGCAGCTATA
CATGAAGTTCTGGCAGTGAACGCCAGGCCACCAGGAGAATAACAATTTTGTCTGTCAATATCAAC
ATTGGCCCCGGGACTGCGAGTGGTTCGCGGTACATGAGCACTATTGGGAGACCATCAGCGCCTTCTGCG
ATCGGCATGGTGTGGATTACTTGACTGGTTCCTGGTGGCCAACTTGGATGACCTCTATGCGTCCAATAT
TCCTGTTTACCGCTTCGTGCAGCGCCCTGGAGACCTTGTGTGGATTAATGCAGGGACTGTGCATTGGGTG
CAGGCTACTGGTGGTGAACAACATTGCCTGGAACGTGGGGCCCTCACCGCTATCAATACCAGCTGG
CCCTGGAGCGATATGAGTGAACGAGGTGAAGAACGTCAAGTCCATTGTACCCATGATTCATGTGTCTG
GAACGTAGCTCGAACGGTCAAGATCAGTATCCTGACTTGTCAAATGATCAAGTTCTGCCTCCTGCAG
TCAATGAAGCACTGCCAGGTGCAGCGGGAGAGCCTGGTGCGGGCAGGGAAGAAAATCGCTTACCAAGGCC
CGTCAAGGACGAGCCTGCCTACTACTGCAACGAATGCGATGTGGAGGTGTTCAACATCCTGTTCTGTTAC
AAGTGAGAATGGCAGCCGAAACAGTACCTGGTGCAGTGGGCTGTGCGCGCCGTCGAGTGGCGGC
CTACAGGGCGTGGTGGTCTAGAGCAGTACCGCACAGAGGAGCTGGCACAGGCCTATGATGCCTTACAC
TGGCTCCTGCCAGCACGTGCGCA

ACGCGTACGCGGGCCTCGAGCAGAACTCATCTCAGAAGAGGATCTGGCAGCAAATGATATCCTGGATT
ACAAGGATGACGACGATAAGGTTTAA

Protein Sequence: >RR202151 representing NM_001108829
 Red=Cloning site Green=Tags(s)

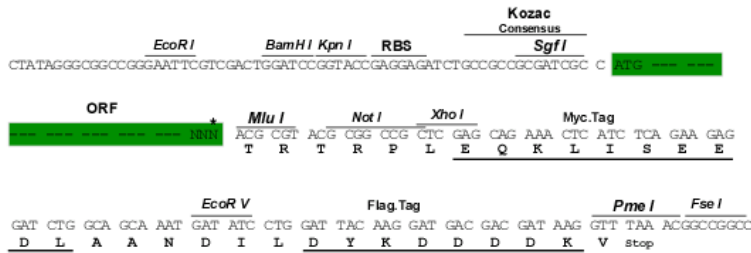
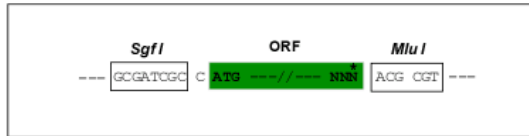
MPPAALSGPSGEEGLSPGGKRRRGCSESEQRHSLPHHPYPAPAYTAHPPSHRLGPATPLGPGPRPPGA
 ESHGCLPATRPPGSDLRESRVQSRMDSVSPAASTACVPYAPSRPPGLPGTSSSSSSSNTGLRGVEPS
 PGIPGADHYQNPALAIAPHQARLGPSAHSRKPFLTAPAAAPHLSLPSGTPSSPPPPCPRLLRPPPPPAW
 MKGSACRSAREDEGIELGELFFGAEGPPRPPPPPLPHRDGFLGPPNPRF SVGTQDSHTPPTPTTSSSS
 SSSNSHSSSPTGPVPFPFPYLAARSIDLPLRPSPTLSSQDPPLPLTLALPPAPPSSCHQNTSGSFRR
 SESPRPRVSFPKTPEVGGQPPPGSLSKAPQVPVPGV GELPARGPRLDFPPTPLEDQFEEPAEFKILPDG
 LANIMKMLDESIRKEEQQQEAGAVPPPLKEPFASLRSSLPSDTAPAATTAATPTTTTTTTTQEEEK
 KPPPALPPPPLAKFPPPPQPPPPPPASPASLLKSLASVLEGQKCYRGTGA AVSTRPGSVPATQYSPSP
 ASGATAPPPTSVAPSAQGSKPVS SSSSQFSTSGGPWVRERRAGEEPAGPVTPAQLPPLLPARSE
 EVLEEISRACETLVERVGRSAINPADPVDIADPVD SGTEPQPPPAQAKEESGGVAVAAAGPGSGKRRQKE
 HRRHRRTCRDSVGRPREGRAKAKAPKEKSRVLGNLDLQSEEIQGREKARPDVGGASKVKTPTTPAP
 PPAPAPSAQPTPPSAPVPGKKTREEAPGPPGVS RADMLKLRSLSEGPPKELKIRLIKVESGDKETFIASE
 VEERRLRMADLTI SHCAADVMRASKNAKVKGKFR ESYLSPAQSVKPKINTEEKLPREKLNPTPSIYLES
 KRDAFSPVLLQFCTDPRNPITVIRGLAGSLRLNLGLFSTKTLVEASGEHTVEVRTVQVQPSDENWDLTGT
 RQIWPCESSRSHTTIAKYAQYQASSFQESLQEEKESEDEESEPDSTTGTSPSSADPKNHHIIKFGTNI
 DLSDAKRWKPLQELKLP AFMRVTSTGNMLSHVGH TILGMNTVQLYMKVPGSRTPGHQENNNFCSVNIN
 IGPDCWFVAVHEHYWETISAFCDRHGVDYLTGS WWPILDLYASNIPVYRFVQRPGLVWINAGTVHWV
 QATGWCNNIAWNVGLTAYQYQLALERYEWNEVK NVKSI VPMIHVSWNVARTVKISDPDLFKMIKFCLLQ
 SMKHCQVQRESLVRAGKKIAYQGRVKDEPAYYCNECDVEVFNILFVTSENGSRNTYL VHCEGCARRRSAG
 LQGVVLEQYRTEELAQA YDAFTLAPASTSR

TRTRPLEQKLISEEDLAANDILDYKDDDDKV

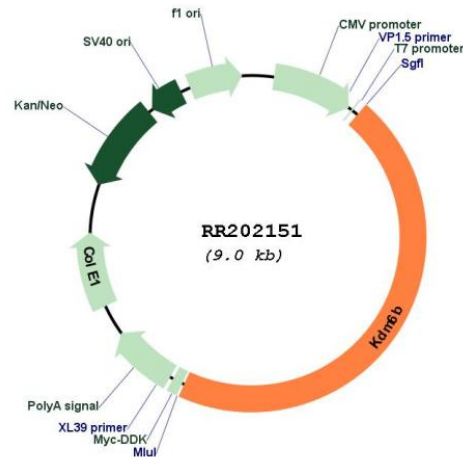
Restriction Sites:
Cloning Scheme:

Sgfl-MluI

Cloning sites used for ORF Shuttling:



* The last codon before the Stop codon of the ORF

Plasmid Map:


ACCN: NM_001108829

ORF Size: 4083 bp

OTI Disclaimer: The molecular sequence of this clone aligns with the gene accession number as a point of reference only. However, individual transcript sequences of the same gene can differ through naturally occurring variations (e.g. polymorphisms), each with its own valid existence. This clone is substantially in agreement with the reference, but a complete review of all prevailing variants is recommended prior to use. [More info](#)

OTI Annotation: This clone was engineered to express the complete ORF with an expression tag. Expression varies depending on the nature of the gene.

Components: The ORF clone is ion-exchange column purified and shipped in a 2D barcoded Matrix tube containing 10ug of transfection-ready, dried plasmid DNA (reconstitute with 100 ul of water).

Reconstitution Method:

1. Centrifuge at 5,000xg for 5min.
2. Carefully open the tube and add 100ul of sterile water to dissolve the DNA.
3. Close the tube and incubate for 10 minutes at room temperature.
4. Briefly vortex the tube and then do a quick spin (less than 5000xg) to concentrate the liquid at the bottom.
5. Store the suspended plasmid at -20°C. The DNA is stable for at least one year from date of shipping when stored at -20°C.

RefSeq: [NM_001108829.1](#), [NP_001102299.1](#)

RefSeq Size: 4679 bp

RefSeq ORF: 4086 bp

Locus ID: 363630

Cytogenetics: 10q24

MW: 146.3 kDa