

Product datasheet for **RR202145**

Myd88 (NM_198130) Rat Tagged ORF Clone

Product data:

Product Type:	Expression Plasmids
Product Name:	Myd88 (NM_198130) Rat Tagged ORF Clone
Tag:	Myc-DDK
Symbol:	Myd88
Vector:	pCMV6-Entry (PS100001)
E. coli Selection:	Kanamycin (25 ug/mL)
Cell Selection:	Neomycin
ORF Nucleotide Sequence:	>RR202145 representing NM_198130 Red=Cloning site Blue=ORF Green=Tags(s)

TTTTGTAATACGACTCACTATAGGGCGGCCGGAATTCGTCGACTGGATCCGGTACCGAGGAGATCTGCC
GCC**CGATCGCC**

ATGTCTGCGGGAGGCCCGCGTGGGATCCGTGTCCGTGGACTCCTACTTGTCTCTACCGTTGGTCC
CGCTCAACGTGGGAGTGAGGCGCCGCTCTCGCTGTTCTTGAACCCGCGGACAACCGGGCGCCGACTG
GACCTCGCTGGCGGAGGAGATGGGTTTCGAGTACTTGGAGATCCGCGAGTTTGAGACGCGCCCGATCCC
ACTCGCAGTTTGTGGATGCCTGGCAGGGCGCTCTGGCTCGTCGGTCCGACGGCTGCTAGAGTTGCTAG
CCTTGTAGACCGTGAGGATATACTGTATGAACTGAAGGACCGCATCGAGGAGGACTGCCAGAAATACAT
ACGCAACCAGCAGAAACAGGAGTCTGAGAAGCCCTTGCAGGTGGCCAGAGTGGAGAGCAGTGTCCCACAG
ACAAAGGAACTGGGAGGCATCACCACCCTCGATGACCCCTGGGGCAAACGCCGGAGCTTTTCGACGCCCT
TCATCTGCTACTGCCCAATGATATTGAGTTTGTGCAGGAGATGATCCGGCACTAGAACAGACAGACTA
TCGGCTTAAATTGTGTGTCCGACCGGATGCCTGCCTGGCACCTGCGTGTGGTCCATCGCCAGCGAG
CTCATTGAGAAAAGGTGTCGTCGCATGGTGGTGGTTGTTCTGACGATTACCTGCAAAGTAAGGAATGTG
ACTTCCAGACCAAGTTTGTCTCAGCCTGTCTCCAGGTGTCCAACAGAAGCGACTGATCCCTATCAAGTA
CAAAGCAATGAAGAAGGACTTTCCTAGTATCCTACGGTTCATCACTATCTGCGACTATACCAACCCTTGC
ACCAAGTCTGGTTCTGGACCCGCTTGGCAAGGCTCTGTCCCTGCC

ACGCGTACGCGGCCGCTCGAGCAGAACTCATCTCAGAAGAGGATCTGGCAGCAAATGATATCCTGGATT
ACAAGGATGACGACGATAAGGTTTAA



[View online »](#)

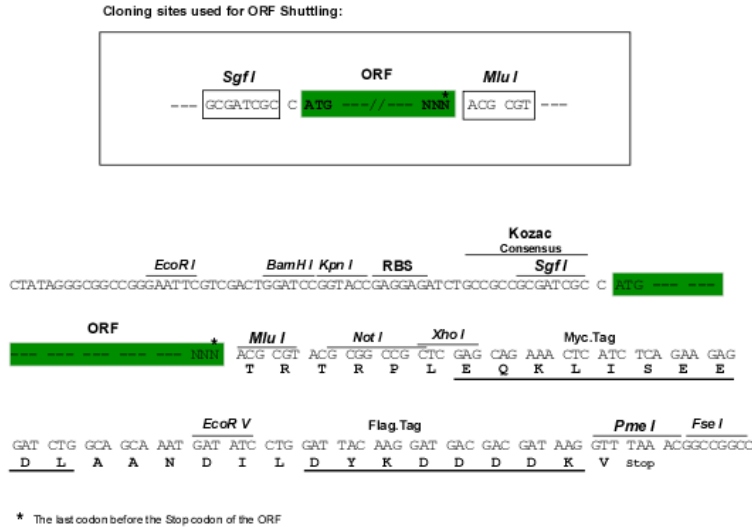
Protein Sequence: >RR202145 representing NM_198130
 Red=Cloning site Green=Tags(s)

MSAGGPRVGSVSVDSYLFSLPLVALNVGVRRRLSLFLNPRTTAAADWTS LAEEMGF EYLEIREFETRPDP
 TRSLLDAWQGRSGSSVGRLELLALLDREDILYELKDRIEEDCQKYIRNQQKQESEKPLQVARVESSVPQ
 TKELGGITTLDDPLGQTPELFDAFICYCPNDIEFVQEMIRQLEQTDYRLKLCVSDRDVLPGTCVWSIASE
 LIEKRCRMVVVSDDYLQSKCDFQTKFALSLSPGVQKRLIPIKYKAMKKDFPSILRFITICDYTNPC
 TKSFWFTRLAKALSPL

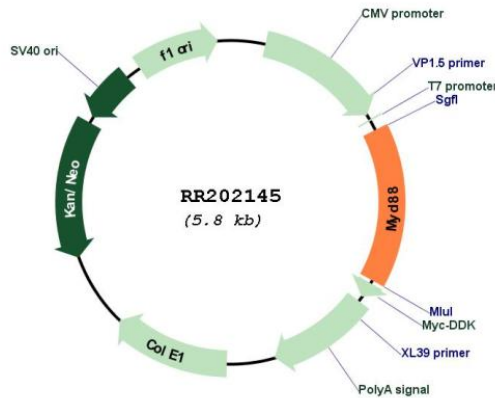
TRTRPLEQKLISEEDLAANDILDYKDDDDKV

Restriction Sites: SgfI-MluI

Cloning Scheme:



Plasmid Map:



ACCN: NM_198130

ORF Size:	888 bp
OTI Disclaimer:	The molecular sequence of this clone aligns with the gene accession number as a point of reference only. However, individual transcript sequences of the same gene can differ through naturally occurring variations (e.g. polymorphisms), each with its own valid existence. This clone is substantially in agreement with the reference, but a complete review of all prevailing variants is recommended prior to use. More info
OTI Annotation:	This clone was engineered to express the complete ORF with an expression tag. Expression varies depending on the nature of the gene.
Components:	The ORF clone is ion-exchange column purified and shipped in a 2D barcoded Matrix tube containing 10ug of transfection-ready, dried plasmid DNA (reconstitute with 100 ul of water).
Reconstitution Method:	<ol style="list-style-type: none">1. Centrifuge at 5,000xg for 5min.2. Carefully open the tube and add 100ul of sterile water to dissolve the DNA.3. Close the tube and incubate for 10 minutes at room temperature.4. Briefly vortex the tube and then do a quick spin (less than 5000xg) to concentrate the liquid at the bottom.5. Store the suspended plasmid at -20°C. The DNA is stable for at least one year from date of shipping when stored at -20°C.
RefSeq:	NM_198130.1 , NP_937763.1
RefSeq Size:	2190 bp
RefSeq ORF:	891 bp
Locus ID:	301059
UniProt ID:	Q6Y1S1
Cytogenetics:	8q32
MW:	33.9 kDa
Gene Summary:	an adaptor protein which binds toll-like receptors and links them to other downstream signalling molecules [RGD, Feb 2006]