

Product datasheet for **RR202136**

Gtse1 (NM_001130500) Rat Tagged ORF Clone

Product data:

Product Type:	Expression Plasmids
Product Name:	Gtse1 (NM_001130500) Rat Tagged ORF Clone
Tag:	Myc-DDK
Symbol:	Gtse1
Synonyms:	RGD1563164
Mammalian Cell Selection:	Neomycin
Vector:	pCMV6-Entry (PS100001)
E. coli Selection:	Kanamycin (25 ug/mL)



[View online »](#)

ORF Nucleotide Sequence:

>RR202136 representing NM_001130500
 Red=Cloning site Blue=ORF Green=Tags(s)

TTTTGTAATACGACTCACTATAGGGCGGCCGGGAATTCGTCGACTGGATCCGGTACCGAGGAGATCTGCC
 GCC**CGGATCGCC**

ATGGAAGAAGAGACGGCAGCGACTGCCTTCGACCAGCCAGAGGGGAGAGGTGAAGATGGACCCTGGTA
 GTAAGAAGGAAGACTTTCTTTTGGAAAGATGAAAAATTTGACTTCGATCTTCTTGTCTTCTCAAG
 CGCAAATGAAGATGACGAAGTCTTTTTCGGGCCTGTGGGACATAAAGAAAGATGCATTGCTGCCAGTTT
 GACTTAAACCGCCAGGTTCTGAGCAGCCCTTCCCCAGGCTCTGGCAGCCCTGCACCTGGAGCCCTC
 TCACTGGGAGAGAAGTTTGTGGAGGTGTACAAAGAAGCCCACTTACTGGCCTTACAGATAGAATGTCACAG
 CCGAAGAGAGGTGGCCAGGCCCAAGCCTAGAAGTGTGTGAGCCAGGCCAAGAAACGTTTGTGCAG
 GACTCACAGTTAAAAATAAGTCTTTTTGAGAAAGAACAAGAGAGACAAAAGTCCCTTGTCACTTAAAA
 GAGAGACATTCTGCTGCCGTCTCGAGGGCGCAACCGCTTTGGGGGAGCCCACTCTGGCTTCTCC
 AGGCTGCCCAACTCCCCTCTCCAGCAGGCCCTGTTGAGCCAGAGCAGCCAGGTCGCGCTGTTCC
 TCTCAGCCTCAAAGTCAAGCTGGCCTCAGAGGAGGATAATGAGCAAGCTACAGCCACCCGGGCTTTGC
 CTGTGAGAGGAAGAAATCTTTTTCTGGCCACAGAGAAGCTCAAAAAGAGGTGCCAGCCAGCCTTACGA
 GACGAAGCCCCTGAATGAAAAGGGATCCAGAGTGATGTGCTCCTGGACAAACCCAGCACGGCTCCAGAT
 GCTGCCAGTCGAGAAGGCCCGCCAGGCAAGAGGTCACTCCCCGTTCTGGCAAGTTGGGACTGAAGAAGA
 CCCTGTTAAAGCCACCGGGCTATACTAGTAATCTCACAAAGAAGTCTCTACCTCAGGGTCGGCTTCAAG
 CCTCGTGTCTGGTGTGGCAGGTCTCCACAGCAGGCAAGCAAGTCCAGTGAAGTTTCAAGTATTTCC
 GCTAGCAGCTCCCGCGTCAGTCAGTACCAGCAAGTTGGCAGAGTGGACTTGGCAGCTCACACCAGG
 CTTTGCCAGCAGCCCTGCCAGAGCATTGTCAGACAAGCCAAAAGGCTGATGCTGCCAGACAGTGGC
 AGAGCAGCCCAAGGCCCTCACCCCAAGTCTTGTCTCAACAACCCAGACTCCAAAACACAAGGACCC
 AGAGTGGACCTGGACACCGAGACATGTCAGTTGAATAAAACTGTGAGCATAAAACGACAGGACTCCTCTC
 TAGGCTGCAAGACAGAGGCCGTATCTACCACAACAAACCCATTTAAAGTGCCCGAGTTTTCTGTTGGTGA
 GTCACCTGATAGAGTGACCCCAAGATCTCAAGGACACATCGGCTGCAGTCTGGACACCAGCTGGCAGG
 GTGGTCAGCAGCACTCTGTGAGACGCTTATCAGGGCTCACTCCACAAGGCCTGCCAGCAGTATGAGGA
 CCCCTTTGAGCACAAGACGGATGTCAGTGTGCCACACCTGCCAGTAGGCGTCTCTGGAAGTCCATT
 AACAGCACCTCAGTCCATGCCTAGGGCTCTGGTGTCCCCTGTGTGCCTGCCGGCGACTTTCTTCT
 GAGCCCAGGAGAAGATCTACAGTCAGATCGGAGCTGATGCAGGAGAGCAGCAGCAATGGCAGTGTGGC
 AGAGCCAGGGCCTGTCTCAGATGAGAGCTTCCCCTCCATCCTCGGTGCCTCAAGCACTGAAGTTTTC
 TCCAGAGAAGAGTGACTTCTCCTTCCCAAGGCTCCTCCACAGGAACAGGTGAGGTTGAAGCAGAGCCT
 CATGAAGACATGCACCCAGTGAGGTACCTGGAGGTGAATGCAGTTCCACACCATCTGAGGGTCTTCTGC
 TAGACATCAAGCTGGACCAGTCCACATCGCTCCTGAAGCCGGAGACAGAGACTTAGCCGACTGCCCTCT
 CATCGACTTCAGCAACACCCCTGAGTCGAACATGGCTTTGGGACCTAGCAGCTGGCCCTGATAGACCTC
 ATAATGAATACTCCAACATGGGTAGAAGTGTGTTGGGAAGCCTCCAAGGCTGAGCTCGGCCAGCTGA
 TCGATCTGGGCTCCCCTGATCCAGCTGAGCCCTGAGGCTGACAAGAAAATGTGGACTCACCGCTCCT
 CAAGTTCCAAGTTC

ACGCGTACGCGGCCGCTCGAGCAGAACTCATCTCAGAAGAGGATCTGGCAGCAATGATATCCTGGATT
 ACAAGGATGACGACGATAAGGTTTAA

Protein Sequence: >RR202136 representing NM_001130500
 Red=Cloning site Green=Tags(s)

MERRDGSVPSTSQRGEVKMDPGSKKEDFLLLEDEKDFDFLSLSSSSANEDDEVFFGPVGHKERCIAASL
 DLNRQVPEQPLAPGSGSPCTWSPLTGEKFVEVYKEAHLALQIECHSRREVAQAAPRSVAQSQAKETFVQ
 DSQKISLFEKEQKRDKSPLSLKRETFCLPSSRAQPLLGEQLLASPLPNSPLPAGPVQQTSTQGPPCS
 SQPPSQAGPQRRIMSKLQPPRALPVRGRNLFLATEKLKKEVPASLQQTKPLNEKGSQSDVLLDKPSTAPD
 AASREGRPGKRSLPVPGLGLKKTLLKPPGYTSNLTKKSSSTSGSASSLVSGVGRSPTAGKAKSSELSSIP
 ASSRRQSVTSKLRVGLATSHQALPAAPARAFCRQAKKADAAQTVAEQPKALTPSPLAQQPQTPKHKG
 RVDLDTETCQLNKTVSIKRQDSSLGCKTEAVSTTTNPFKVPQF SVGESPDVTPKISRTHRLQSWTPAGR
 VVSSTPVRRSGLTPQGLPSSMRTPLSTRMSVLPPTASRRLSGLPLTAPQSMPRALVSPLCVPARRLSS
 EPRRRSTVRSELMQESSNGSAGQSQGLSDESSPSSVPQALNFSPEKSDFPSPQSGSSTGTGQGEAEP
 HEDMHPSEVPGGCSSTPSEGLLLDIKLDQLTIAPEAGDRDLADCPIDFSNTPESNMALGPSSWPLIDL
 IMNTPNMGRSDVGKPPKAEQGQLIDLGSPLIQLSPEADKENVDSPLLLKFQV

TRTRPLEQKLISEEDLAANDILDYKDDDDKV

Restriction Sites:

SgfI-MluI

Cloning Scheme:



ACCN: NM_001130500

ORF Size: 2247 bp

OTI Disclaimer: The molecular sequence of this clone aligns with the gene accession number as a point of reference only. However, individual transcript sequences of the same gene can differ through naturally occurring variations (e.g. polymorphisms), each with its own valid existence. This clone is substantially in agreement with the reference, but a complete review of all prevailing variants is recommended prior to use. [More info](#)

OTI Annotation: This clone was engineered to express the complete ORF with an expression tag. Expression varies depending on the nature of the gene.

Components: The ORF clone is ion-exchange column purified and shipped in a 2D barcoded Matrix tube containing 10ug of transfection-ready, dried plasmid DNA (reconstitute with 100 ul of water).

Reconstitution Method:

1. Centrifuge at 5,000xg for 5min.
2. Carefully open the tube and add 100ul of sterile water to dissolve the DNA.
3. Close the tube and incubate for 10 minutes at room temperature.
4. Briefly vortex the tube and then do a quick spin (less than 5000xg) to concentrate the liquid at the bottom.
5. Store the suspended plasmid at -20°C. The DNA is stable for at least one year from date of shipping when stored at -20°C.

RefSeq: [NM_001130500.1](#), [NP_001123972.1](#)

RefSeq Size: 2645 bp

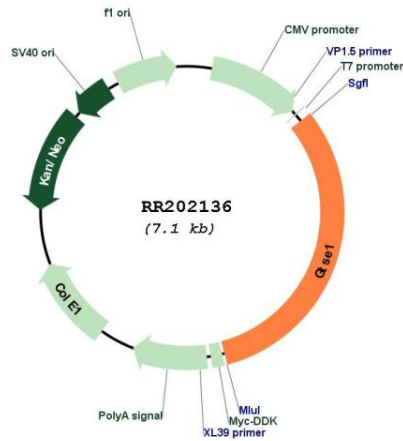
RefSeq ORF: 2250 bp

Locus ID: 300126

Cytogenetics: 7q34

MW: 80 kDa

Product images:



Circular map for RR202136