

Product datasheet for RR202126

Pnck (NM_017275) Rat Tagged ORF Clone

Product data:

Product Type:	Expression Plasmids
Product Name:	Pnck (NM_017275) Rat Tagged ORF Clone
Tag:	Myc-DDK
Symbol:	Pnck
Synonyms:	Camk1b
Vector:	pCMV6-Entry (PS100001)
E. coli Selection:	Kanamycin (25 ug/mL)
Cell Selection:	Neomycin
ORF Nucleotide Sequence:	>RR202126 representing NM_017275 Red=Cloning site Blue=ORF Green=Tags(s)

TTTTGTAATACGACTCACTATAGGGCGCCGGAATTCGTCGACTGGATCCGGTACCGAGGAGATCTGCC
GCC**GCGATCGCC**

ATGCTGCTGCTCAAGAAACAGACGGAGGACATCAGCAGTGTCTATGAGATCCGGGAGAAGCTGGGCTCGG
GTGCCTTCTCTGAGGTGATGCTGGCCAGGAAAGGGCTCTGCTCATCTTGTGGCCCTCAAGTGCATTCC
CAAGAAAGCACTTCGGGGCAAGGAGGCCCTGGTGGAGAATGAGATCGCAGTACTCCGAGGATTAGCCAC
CCCAACATTGTGGCTCTGGAGGACGTCCACGAGAGCCCTTCCCATCTCTACTTGGCCATGGAGCTGGTAA
CAGGTGGTGAACCTGTTTACCGAATCATGGAGCGGGCTCCTACACAGAGAAGGATGCGAGCCACCTTGT
AGGGCAGGTCTTGGTGTCTCCTACCTTATAGCCTGGGCATCGTGCACCGGACCTCAAGCCTGAA
AACCTCCTCTATGCCACACCTTTTGGAGACTCCAAGATCATGGTCTCTGACTTTGGCCTGTCCAAAATTC
AAGCTGGCAACATGCTAGGCACAGCCTGTGGGACCCAGGATATGTGGCCCAAGAGCTCCTGGAGCAGAA
ACCCTACGGGAAGGCCGTAGATGTGTGGCCCTGGGTGCATCTCCTACATCCTGCTGTGTGGGTACCC
CCCTTCTATGATGAGAGCGATCCTGAACCTTTCAGCCAGATTCTGAGGGCCAGCTACGAGTTTGACTCTC
CCTTTTGGGATGACATCTCAGAATCAGCCAAAGACTTCATTTCGGCACCTTCTGGAACGTGATCCCCAGAA
GAGGTTACCTGCCAACAGGCCCTTACAGCATCTCTGGATCTCTGGGATGCAGCCTTGGACAGGGACATC
CTAGTTCTGTCTAGTGTGAGCAGATCCAGAAGAATTTTCCAGGACCCACTGGAAGCGTGCATTCAATGCCA
CATCATTCTACGTACATCCGTAAGCTGGGACAGAGCCAGAGGGTGTGGAGGCCCTCCAGGCAGGGTAT
GACCCGTACAGCCACCCAGGCCCTGGGACTAGCCAGTCTCCAAGTGGGACCCGTACAGCCACCCAGG
CCTTGGGACTAGCCAGTCTCCAAGTGG

ACGCGTACGCGGCCGCTCGAGCAGAAACTCATCTCAGAAGAGGATCTGGCAGCAAATGATATCCTGGATT
ACAAGGATGACGACGATAAGGTTTAA



[View online »](#)

Protein Sequence: >RR202126 representing NM_017275
Red=Cloning site Green=Tags(s)

MLLLKKQTEDISSVVEIREKLGSGAFSEVMLAQERGAHLVALKCIKKALRGKEALVENEIAVLRRIISH
 PNIVALEDVHESPSHLYLAMELVGGELFDRIMERGSYTEKDASHLVGQVLGAVSYLHSLGIVHRDLKPE
 NLLYATPFEDSKIMVSDFLSKIQAGNMLGTACGTPGYVAPELLEQKPYGKAVDVWALGVISYILLCGYP
 PFYDESDPELFSQILRASVYEFDSPFWDDISESAKDFIRHLLERDPQKRFTCQQALQHLWISGDAALDRDI
 LGSVSEQIQKNFARTHVKRAFNATSLRHIRKLGQSPEGEEASRQGMTRHSHPLGT SQSPKWDP SQPPR
 PWD*PVSQV

TRTRPLEQKLISEEDLAANDILDYKDDDDKV

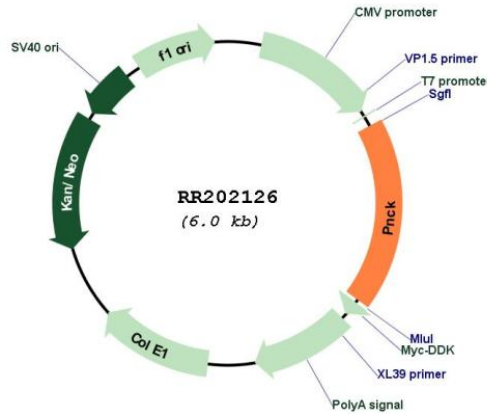
Restriction Sites:

Sgfl-MluI

Cloning Scheme:



Plasmid Map:



ACCN:

NM_017275

ORF Size:	1029 bp
OTI Disclaimer:	The molecular sequence of this clone aligns with the gene accession number as a point of reference only. However, individual transcript sequences of the same gene can differ through naturally occurring variations (e.g. polymorphisms), each with its own valid existence. This clone is substantially in agreement with the reference, but a complete review of all prevailing variants is recommended prior to use. More info
OTI Annotation:	This clone was engineered to express the complete ORF with an expression tag. Expression varies depending on the nature of the gene.
Components:	The ORF clone is ion-exchange column purified and shipped in a 2D barcoded Matrix tube containing 10ug of transfection-ready, dried plasmid DNA (reconstitute with 100 ul of water).
Reconstitution Method:	<ol style="list-style-type: none">1. Centrifuge at 5,000xg for 5min.2. Carefully open the tube and add 100ul of sterile water to dissolve the DNA.3. Close the tube and incubate for 10 minutes at room temperature.4. Briefly vortex the tube and then do a quick spin (less than 5000xg) to concentrate the liquid at the bottom.5. Store the suspended plasmid at -20°C. The DNA is stable for at least one year from date of shipping when stored at -20°C.
RefSeq Size:	1618 bp
RefSeq ORF:	1032 bp
Locus ID:	29660
UniProt ID:	O70150
Cytogenetics:	Xq37
MW:	38.4 kDa
Gene Summary:	contains alternatively spliced isoforms CaM kinase Ibeta3 and Ibeta1; both isoforms activate CaM kinase Ialpha activity via Thr177 phosphorylation [RGD, Feb 2006]