

Product datasheet for **RR202104**

Sptlc3 (NM_001106517) Rat Tagged ORF Clone

Product data:

Product Type:	Expression Plasmids
Product Name:	Sptlc3 (NM_001106517) Rat Tagged ORF Clone
Tag:	Myc-DDK
Symbol:	Sptlc3
Synonyms:	RGD1310030
Mammalian Cell Selection:	Neomycin
Vector:	pCMV6-Entry (PS100001)
E. coli Selection:	Kanamycin (25 ug/mL)



[View online »](#)

ORF Nucleotide Sequence:

>RR202104 representing NM_001106517
 Red=Cloning site Blue=ORF Green=Tags(s)

TTTTGTAATACGACTCACTATAGGGCGGCCGGAATTCGTCGACTGGATCCGGTACCGAGGAGATCTGCC
 GCC**CGGATCGCC**

ATGGCCAACCCGAGGGACAGTGTCTACTAATGGGACTCTACGCAATCCCAAGACCAGCCGGGAAAAA
 GACAGAGCACTGATTGTGTGAAAAATGGAATCTCGAAAGAAGCCAGCAAAATAGGAAGGCAGAGGAGGA
 CGATAAATTGTCTTTAAGCCCTACCCAGAGCCACCCTTTATGTCTTCGTTTTACATACATGGGATAT
 GGAATTGGCATGTCTCGGCTATCTCAGAGACTTCATGAGAAACTGGGAATAGAAAAATGCAACGCAG
 CTGTAGAGCGAGAAGAACAAGATTTGTGCCGCTGTATCAGGACTTTGAGAATTTTATACAAGAAA
 CCTTTACATGAGAATCAGAGACAGCTGGAGTCACACCGCTGCAGTGTCCAGTACCTAATTTGACATA
 ATGAAAAAGTGACAGATGACTATAACTGGACATTCAGGCATACTGGAAAAGTTATCAAAAATGTTATCA
 ACATGGCCTCCTACAACCTACCTGGCCTTGCATCAAAAACAATGAGTCAATGGAGAAAGTTAAAGACAC
 TATAGAAAAGTATGGCGTAGGTGTGCCAGCACCAGAAAATGAAATGGGTTCTTTGGATATACACAACGAG
 CTGGAGGATCTCATGGCTAAGTTCTTGAATGTGGAAGCAGTGTGGTTTTGGGATGGGATTCGCAACCA
 ACTCGACGAATATCCCTATATTTGTTGGAAGGGATGCCTCATTTTAAAGTGACGAGTTCAACCACACTTC
 AGTCATCTGGGGTCTCGACTCTCAGGCGCAGTCATAAGACCCTCAAACACAATAATATACAAAACCTA
 GAGAAGCTCCTGAGAGAAGCTATCATCCGTGGCCAGCCTCGCACGGGAAGAGCTTGGAAAAAGATTCTCA
 TCCTGGTAGAGGGAGTCTACAGCATGGAAGTTCCATTGTGAACCTTCCCAGATAGTGGCTCTAAAGAA
 GAAATACAAGGCTTACCTCTACATGGATGAAGCTCACAGTATTGGCTGTACAGGTACCATGGCCAAAGC
 ATCCGAGAGTGTGGACTGGCCCTGAAGATATCGACATATACATGGGTACATTACCAAAAAGCTTCG
 CGGCTTCTGGAGGCTATATAGCTGGTAAAAAGGAAATTTGGATTATGTACGGGTTTCAGTCGCATAGTGC
 TACATATGCTACATCCATGAGTCCTGTAGTAGCAGCGCAAAATCATCAGATCATTGAAGATAATGATGGGA
 TATGAAGGAAACTTTGGAGGTGTGCAGAGAATACAGCAACTTAGAGAAAAATAAAAATTTCCGACGGC
 GACTTATAGAGATGGGATTCATCATCTATGGCAATGACTACTCTCCCGTGGTCCCGCTCCTCTACAT
 GCCTGCTAAAGTGTCTGCTTTTGGAAAGACTTTTGTCTTAAGAAAAAGATTGCGGTGGTGGCTGGATT
 CCAGCTACTTCTCTGCCAGAAGGTCGGGCTAGGTTACGCTTTCTCAGCTCATACTCGGGAGATGTTAG
 ACACAGTTTTGGAAGTTGTTGATAAAATCGGTGATCTCCTGAATGTGAAATTTCCCATACAAGAAGTC
 AGGACGGGCTGTACTCTACAATAAGGAGAATTTGACAATGAAGCAAGCTTTGAAGAGAAGAGCTCTGAA
 CCAGAAGCCCCAGAAGCC

ACGCGTACGCGGCCGCTCGAGCAGAAACTCATCTCAGAAGAGGATCTGGCAGCAAATGATATCCTGGATT
 ACAAGGATGACGACGATAAGGTTTAA

Protein Sequence:

>RR202104 representing NM_001106517
 Red=Cloning site Green=Tags(s)

MANPRDSAVTNGTLRNPQTQPGKRQSTDCVKNGISKEAQNRKAEEDDKLVFKPYPEPPLYVVFVFTYMGY
 GIGMLFGYLRDFMRNWGIEKCNAEVEREEQKDFVPLYQDFENFYTRNLYMRIRDSWSHTVCSVPVFNFDI
 MEKVTDYDYNWTFRHTGKVIKVINMASYNLGLASKYNESMEKVKDTIEKYGVGVASTRNEMGSLDIHNE
 LEDLMAKFLNVEAVMVFGMGFATNSTNIPFVVGKGLILSDEFNHTSVILGSRLSGAVIRPFKHNNIQNL
 EKLLREAIIRGQPRTGRAWKKILILVEGVYSMEGSIVNLPQIVALKKKYKAYLYMDEAHSIGCTGTMGQG
 IRELFGLAPEDIDIYMGFTKSFASGGYIAGKKEIVDYVVRVQSHSATYATSMSPVVAQIIRSLKIMMG
 YEGNFGGVQRIQQLRENIKYFRRLIEMGFIIYGN DYSPVVPVLLYMPAKVSAFGRLLLLKKKIIVVVVGF
 PATSLPEGRARFSLSSAHTREMLDVTLEVVDKIGDLLNVKYFPYKKSRAVLYNKENFDNEASFEEKSSE
 PEAPEA

TRTRPLEQKLISEEDLAANDILDYKDDDDKV

Restriction Sites:

Sgfl-Mlul

Cloning Scheme:



ACCN: NM_001106517

ORF Size: 1689 bp

OTI Disclaimer: The molecular sequence of this clone aligns with the gene accession number as a point of reference only. However, individual transcript sequences of the same gene can differ through naturally occurring variations (e.g. polymorphisms), each with its own valid existence. This clone is substantially in agreement with the reference, but a complete review of all prevailing variants is recommended prior to use. [More info](#)

OTI Annotation: This clone was engineered to express the complete ORF with an expression tag. Expression varies depending on the nature of the gene.

Components: The ORF clone is ion-exchange column purified and shipped in a 2D barcoded Matrix tube containing 10ug of transfection-ready, dried plasmid DNA (reconstitute with 100 ul of water).

Reconstitution Method:

1. Centrifuge at 5,000xg for 5min.
2. Carefully open the tube and add 100ul of sterile water to dissolve the DNA.
3. Close the tube and incubate for 10 minutes at room temperature.
4. Briefly vortex the tube and then do a quick spin (less than 5000xg) to concentrate the liquid at the bottom.
5. Store the suspended plasmid at -20°C. The DNA is stable for at least one year from date of shipping when stored at -20°C.

RefSeq: [NM_001106517.1](#), [NP_001099987.1](#)

RefSeq Size: 2837 bp

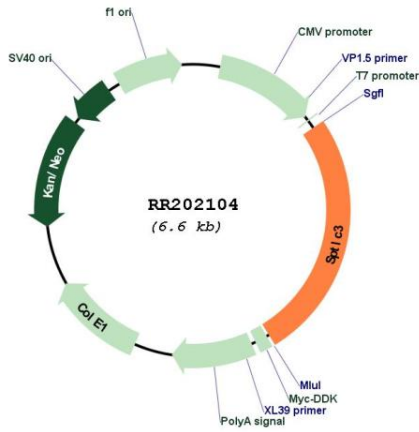
RefSeq ORF: 1692 bp

Locus ID: 296188

Cytogenetics: 3q36

MW: 63.7 kDa

Product images:



Circular map for RR202104