

Product datasheet for RR202102

Phlpp1 (NM_021657) Rat Tagged ORF Clone

Product data:

Product Type: Expression Plasmids
Product Name: Phlpp1 (NM_021657) Rat Tagged ORF Clone
Tag: Myc-DDK
Symbol: Phlpp1
Synonyms: Phlpp; Plekhe1; Scop
Mammalian Cell Selection: Neomycin
Vector: pCMV6-Entry (PS100001)
E. coli Selection: Kanamycin (25 ug/mL)
ORF Nucleotide Sequence: >RR202102 representing NM_021657
 Red=Cloning site Blue=ORF Green=Tags(s)

TTTTGTAATACGACTCACTATAGGGCGGCCGGAATTCGTCGACTGGATCCGGTACCGAGGAGATCTGCC
 GCC**CGATCGCC**

ATGGAGCCCGCCGCCGACGCCCGGCACAGCGACTCGCGGACCCACGGGTGAGGACCGAGCCCGGCGG
 CGGCGGCGGCGGCCGAGGGCGGACGGAGTCCGATTCTGTGCTGAGCGCGGCGGCCCGAGCGGCGGGAA
 CGGCGGCGGCGGCGAGAGGAGGCCCGCTGCGAGGCGCCCGGGGCGCTGCCCGGCGCGGGGAGGC
 ACCGGACGCGAGGCGTCCGCGCGGGTGCAGCCCGCGCGCGGGGGCGCCCGGTGACCGCGGCCG
 GCGGCGGCGCAACTCGTGTCTGCTGAGGAGAGGGCGGCTGAAGAGGAATCTGTGCGCCCGCTTCGTC
 GTCTCATCGCCGCTCTCGGCGTCTTCGGCCGCTGGCGGCTCCCGGCGTCTGCTGCGCCTCGGGTCTG
 CTGTGCACCCGGAGTCTGGACAGGAAGACGCTGCTCCAGAAGCACCGGCAGCTGCTTACGCTGCAGCCGT
 CGGACCGGACTGGGTGAGGCACCACTCCAGCGGGGCTGTGTGCACGTCTTTGACCGCCACATGGCCTC
 GTCCTACCTGCGCCAGTGTCTGACGCTGGACACCACAGCCCGGAGGTGGCCCGCGGCTTCTGCA
 CTGGGCCACAAAGGCGGCGGGTGGTGAAGGTGCTGGGCCACGGGCCACCTCCGGCCGCTGCCCGGCCG
 CCAGCGATCAGACCCCGGCCACAGACTCGGAAGAGACTGGAGCCACCGCCCTCGAGCAGCAGGTCGG
 TGCTGTCCGGGGCCCTGCGCGCGCCTCTGCGGATCTGCCGCTGCCCGGGGGCGCCTGGACCGCTGT
 GCACCTCGGGTCAACCTGCGCCCTCGACTCCAGCCCGGAGAGCTGTTGCGGGGGGCCCTGTTCC
 CGTCCCGCGCCCGCGCCCGGCTCCGACACCGAGAGTTAGCCTGAGCCCGAGCGCGAGAGCGTGT
 AGACCGGCTGGACCCCTATAGCAGCGGCGGCGGCTCCTCCTCTTCGTCGAGGAAGTGAAGCTGACCCG
 GCCACGGTCTTGACGGGGCCTTCGGGGCGCCACCACCGAGTCCGCTCCTCACAGCCTCGACCGCCT
 CCCCAGACCTCGGCGTTACTGCAGCCGAAAGCCCGACGGGCGTAGACGGCACTGGCCTAGTGGTGGG
 CGAAGGTCCCGGAGACGACAAGCGGTGGCAGCTGCAGCTCCAGGCGTTCCTCTGTGACTCCAGGGAGG
 ATCCGGGAGACCGTGAAAAGACGTCTTCTCCGCCCTCCCTGTATGTACAGCTCCATGGGGAGACTACCC
 GCGCCTGGAGGCGGACGAGAAGCCATTGCAGATCCAAAATGACTACCTTCCAAGTGGGATTTGGGA
 GCTGTGGAGGTCAGGAGGAAGCATGGATTCGAGATTGGCTCCCTCATCCGATTCTATCGAGGAAAG



[View online >](#)

CCTCATAGCACTGGGAGCTCTGAGCGGATTCAGCTCTCGGAATGTACAATGTCCGAAAAGGCAAAATGC
AGTTGCCAGTGAACAGATGGACAAGACGCCAGGTCATTCTGTGTGGGACGTGCTTGATAGTGTCTGTCTGT
GAAAGACAGCTCGAGTGGGAAGATGCACGTTCTGCCTCTCATTGGTGGAAAAGTGGAGAAGTGA AAAAG
CACCAGCACTGTCTAGCGTTTCAGCTCTCCGGGCCCCAGAGCCAGACTTACTACATCTGCTTCGATACTT
TCACGGAGTACTACGATGGCTGCGTCAAGTCTCCAAGTTGCATCACAACGCATAAGCTCAGTAGACCT
CTCATGTTGTAGCCTTGAGCATCTGCTGCCAACCTCTTTTACAGCCAAGACCTTACTCATCTCAATTTA
AAACAGAACTTCCTAAGCAGAACCCAGCCTCCAGCTGCCAGAGGACTTGGTGAATGCAGAGATTCA
CCAAATTGAAGAGCCTTAACCTTTCCAATAACCACTAGGAGCCTTTCCGTGAGCAGTCTGCAGCATCCC
AACCTTGGCAGAGCTGAATGTGCTTGCAATGCCCTGCAAGAAGTCCCAGCAGCTGTTGGAGCTATGCAG
AACTTACAGACGTTCTTGCTGGATGAAAATTTTCTCCAGTCCCTTCTGCTGAGTTGGAGAACATGCACC
AGCTCAGTATTTGGGTCTTTCTTTAATGAATCACTGACATCCAGAGGTATTGGAGAAGCTGACTGC
TGTGGATAAACTGTGCATGGCTGGGAACGTATGGAGACCCTTAGACTACAGGCCTTAAGAAGGATGCC
CATATTAACACGTGGACCTAAGACTGAACATACTCAGAAAGCTTATAACAGATGAAGTGGACTTTCTGC
AACATGCACTCAGCTTGACCTGCGAGACAATAAACTTGGTGTCTAGATGCTATGATCTTCAACAACAT
AGAAGTTCTGCACTGCGAGAGGAATCAGCTGGTACACTGAACATTTGTGGCTATTTCTAAAAGCACTC
TATGCTTCTTCTAACGAACCTCGTTCAACTTGATGTCTACCCAGTTCCAAATATCTATCGTACATGGATG
TCTCAAGAAACTGCCTAGAAAAGTGTGCCTGAGTGGGTATGTGAAAGCCGGAAGTTAGAAGTTTTGGAT
TGGCCATAATCAAATATGTGAACCTCTGCCCGCTATTTTGTAAATAGTAGTCTCCGAAAATTTGCTGGCA
GGACACAACCGGTTGGCAAGGCTTCTGAAAGGCTGGAGAGAACATCAGTGGAGGTCTTGGACGTACAGC
ATAACCAGATCATTGAGCTCCCACCAAACCTTCTCATGAAGGCTGACAGCCTGAGATTCTCAATGCGTC
CGCAAACAACTGGAAACCTGCCTCCAGCCACTTTCTGAGGAGACAAGCAGTATATTACAGGAGTTG
TACTTGACAAACAACAGCCTCACTGATAAGTGTGTGCCCTTGTAAACAGGGCACCCCGCCTGAAGATCC
TACATGGCTTATAACCGGCTTCAGAGCTTCCAGCAAGTAAAATGGCGAAAAGTGGAGGACTTGAAGA
AATCGATATCAGTGGGAATAAGCTGAAAGCCATCCCAACAACCATCATGAACGCAAGCGCATGCACAG
GTGATTGCTCACTCGAAGTGCATCGAAGCTTTCTGAAGTCATGCAGCTCCCAGAAGTCAAGTGTGTAG
ATCTGAGCTGTAATGAGCTGAGTGAATCACCTACCAGAAAACCTGCCACCTAAACTGCAGGAACTAGA
TCTGACCGGAAACCCACGCTTGCCTGGACCACAAAAGCTTGGAGCTGCTCAATAACATCCGCTGTTTT
AAGATTGACCAGCCGTGAGTGGAGATGCATCTGGAGCCCAGCAGTATGGAGTCATGGTTACACTGAAG
CATCGGGAGTAAAAACAAGCTGTGTGTCGAGCCCTGTCTGTGAATAACTTCCGTGACAACCGAGAGGC
TCTCTACGGTGTGTTGATGGAGACCGGAATGTGGAAGTGCCTACCTTCTCCAGTGCACCATGAGTGAC
ATCTTAGCTGAGGAGCTTCAAAAAACAAAAATGAAGAAGAATACATGGTCAATACATTTATAGTCATGC
AAAGGAAACTGGGAACGGCTGGGCAGAACTCGGTGGTGTGCTGTCTGTGTCACATCAGGCATGACCC
TGTGGACCTGGGAGGATCCTTACCCTGACCTCTGCTAATGTTGGCAAGTGCCAAACGGTCTCTGTGCGA
AACGGGAAGCCGCTGTCTGTCCAGGTCCTATACCATGAGCTGTGAAGAAGAGCGGAAGAGGATTAAGC
AGCACAAGCCATCATCACTGAGGATGGCAAGGTCAATGGAGTGACAGAGTCCACACGCATCCTGGGCTA
CACCTTCTTACCCAGTGTGGTGCCTCGCCCCACGTACAGTCGGTGTCTGACTCCACAGGATGAG
TTTTTCATCCTGGGCAGCAAAGGCTGTGGGACAGCCTGTCCATCGAAGAGGCTGTGGAAGCCGTGCGCA
ACGTTCCAGATGCTCTAGCCGCCCAAGAAGCTATGCACCCTGGCCAGAGTACGGCTGCCACGACAG
CATCAGTGTGTGGTGGTGAACACTCAGTGTACGGAAGACAGCTTCTGCTGTGAGCTCAGTGTGGGA
GGAAGCATGCCACCGCCAGTCCCGAACTTCCCGCCCTCCGTGAGCATGGTGTCAAGGACCGGCCCT
CAGATGGGCTGGGCGTGCCGCTCCTCCAGCAGCGGATGGCATCTGAGATCAGCAGTGAATTGTCTACCTC
TGAGATGAGTAGTGAGGTGGGCTCCACAGCTTCTGACGAGCCGCGTCCGGAGCCCTGAGTGAGAGCAGC
CCCGCTACCCAGCAGCAGCGCTGCATGCTCCACCCGGTCTGCCTGTCCAACCTCTTCCAGCGCCAGC
TGTCCAGCGCCACTTTCTCCAGTGCCTTCTGACAACGGCTTACAGTGTGACGAGGAAACCCATTGA
GGGCGTGTTCAGCAACGGCAGCCGGTGGAGGTGGAAGTGGACATCCATTGCAGCCGGGCAAGGAGAAG
GAGAGACAGCAGCAGCTTCCAGTACCAGTGAAGCCAGTGTGAGGGCATTGTATCAGTGCCAATG
AGGATGAGTCAGGTCTGTCCAAGAAGACAGACATTTCTGCTGTGGGACCATTGGGCGACGAGGGCTAA
CGGCTCTGTACCTCCCCAGGAAAGGAGCCATAATGTAATAGAGGTTGCCACAGATGCACCTCTCCGGAAG
CCGGGAGGCTATTTTGCAGCCCCTGCTCAACCAGATCCAGATGATCAGTTTATCATCCCCCAGAGCTGG
AAGAGGAAGTCAAAGAAATCATGAAACATCACCAGGAGCAGCAGCAGCAGCAGCAGCAGCAGCAGCA
GCAGCAGCAGCAGCCACCACCTCCACCCAGCCGCCACAGGCACAGGCACAGGCACAGGCACAGGCACAG
AGGCCCTTCCAGATGGATCACCTGCCGGACTGTTACGACACACCACTA

ACGCGTACGCGGCCGCTCGAGCAGAACTCATCTCAGAAGAGGATCTGGCAGCAATGATATCCTGGATT
ACAAGGATGACGACGATAAGGTTTAA

Protein Sequence:

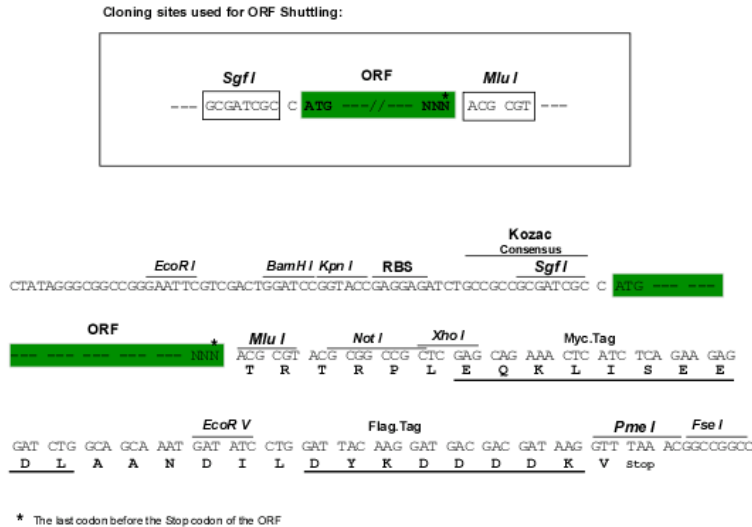
>RR202102 representing NM_021657
Red=Cloning site Green=Tags(s)

MEPAAAAPAQRLADPTGEDRAPAAAAAEGGRSPDSVL SAAAPSGNGGAAREEAPCEAPGPLPGRAGG
TGRRRRRGVPQPAAGGAAPVTAAGGGANLLLLRRGRLKRNL SAAASSSSPSSASSAAGGLPASCASAS
LCTRSLDRKTL LQKHRQLLQLQPSDRDWVRHQLQRGCVHVFDRHMSSYL RVPVLC TLDTTAAEVAARLLQ
LGHKGGGVVVKVLGHGPPPAAPAASDQTPATELGRDVEPPSSSTVGAVRGPAPAPPADLPLPGGAWTRC
APRVNPA PDSPPGELFAGGPCSPSRAPRASDTE SFLSPSAESVSDRLDPYSSGGGSSSSSSELEADP
ATVLTG PSGPPHHPVRSSQPRPPSPKTSALLQPKAPT GVDGTGLVVGEGPGDDKAVAAAAAPGVPLWTPGR
IRETVQKTSPPSLYVQLHGETTRRLEADEKPLQIQNDYLFQLGFGELWRVQEEGMDSEIGCLRIFYAGK
PHSTGSSERIQLSGMYNVRKGMQLPVNRWTRRQVILCGTCLIVSSVKDSSSGKMHVPLPIGGKVEEVKK
HQHCLAFSSSGPQSQTYYICFDTFTEYLRWLRQVSKVASQRISVVDLSCCSLEHLPANLFYSQDLTHLNL
KQNFLRQNPSPAARGLGELQRF TKLKS LNL SNNHLGAFPSAVCSIPTLAELNVSCNALQEVPAAVGAMQ
NLQTFLLDGNFLQSLPAELENMHL SYLGLSFNEFTDIPEVLEKLTAVDKLCMAGNCMETLRLQALRRMP
HIKHVDLRLNLRKLTITDEVDFLQHTQLDLRDNKLGDL DAMIFNNI EVLHCERNQLVTLNICGYFLKAL
YASSNELVQLDVYPVNYL SYMDVSRNCLESVPEWVCE SRKLEVLDI GHNQICELPARLFCNSSLRKLLA
GHNRLARLPERLERTSVEVLDVQHNQIIELPPNLLMKADSLRFLNASANKLETLPATLSEETSSILQEL
YL TNNSLTDKCVPLL TGHPRKILHMAYNRLQSF PASKMAKLEEL EEEIDISGNKKA IPTT IMNCRRMHT
VIAHSNCIEVFPEVMQLPEVKCVDL SCNELSEITL PENLPPKLQELDLTGNPRLALDHKSLELLNNIRCF
KIDQPSAGDASGAPAVWSHGYTEASGVKNKLCVAALSVNNFRDNREALYGVFDGDRNVEVPYLLQCTMSD
ILAEELQKTKNEEYMNVTIVMQRKLGTAGQKLGGA AVLCHIRHDPVDLGG SFTLTSANVGKCVTLVCR
NGKPLSLSRSYTMSCEEERKRIKQHKAIIT EDGKVNVT ESTRILGYTFLHPSVVP RPHVQSVLLTPQDE
FFILGSKGLWDSLIEEAVEAVRNVPDALAAAKLCTLAQSYGCHDSISAVVVQLSVTEDSFCCCEL SVG
GSMPPSPGIFPPSVSMVIKDRPSDGLGVPSSSSGMASEISSELSTSEMSSEVGSTASDEPPSGALSESS
PAYPSEQRMLHPVCLSNSFQRQLSSATFSSAFSDNGLDSDDEEPIEGVF SNGSRVEVEVDIHC SRAKEK
ERQQHLLQVPAEASDEGIVISANEDESGLSKKTDI SAVGTIGRRRANGSVPPQERSHNVIEVATDAPLRK
PGGYFAAPAQPDPDDQFIIPPELEEEVKEIMKHHQEQQQQQQQQQQQQPPPPPPPPQAQAQAQAQAQ
RPFQMDHLPDCYDTPL

TRTRPLEQKLISEEDLAANDILDYKDDDDKV

Restriction Sites:

Sgfl-MluI

Cloning Scheme:


ACCN: NM_021657

ORF Size: 5088 bp

OTI Disclaimer: Due to the inherent nature of this plasmid, standard methods to replicate additional amounts of DNA in E. coli are highly likely to result in mutations and/or rearrangements. Therefore, OriGene does not guarantee the capability to replicate this plasmid DNA. Additional amounts of DNA can be purchased from OriGene with batch-specific, full-sequence verification at a reduced cost. Please contact our customer care team at custsupport@origene.com or by calling 301.340.3188 option 3 for pricing and delivery.

The molecular sequence of this clone aligns with the gene accession number as a point of reference only. However, individual transcript sequences of the same gene can differ through naturally occurring variations (e.g. polymorphisms), each with its own valid existence. This clone is substantially in agreement with the reference, but a complete review of all prevailing variants is recommended prior to use. [More info](#)

OTI Annotation: This clone was engineered to express the complete ORF with an expression tag. Expression varies depending on the nature of the gene.

Components: The ORF clone is ion-exchange column purified and shipped in a 2D barcoded Matrix tube containing 10ug of transfection-ready, dried plasmid DNA (reconstitute with 100 ul of water).

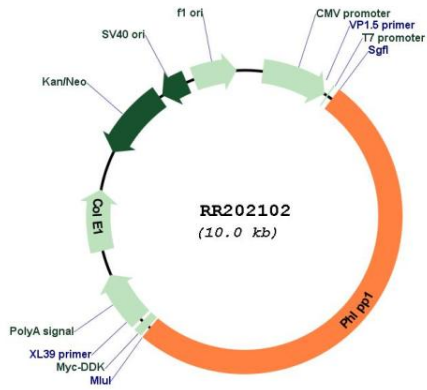
Reconstitution Method:

1. Centrifuge at 5,000xg for 5min.
2. Carefully open the tube and add 100ul of sterile water to dissolve the DNA.
3. Close the tube and incubate for 10 minutes at room temperature.
4. Briefly vortex the tube and then do a quick spin (less than 5000xg) to concentrate the liquid at the bottom.
5. Store the suspended plasmid at -20°C. The DNA is stable for at least one year from date of shipping when stored at -20°C.

RefSeq: [NM_021657.1](#), [NP_067689.1](#)

RefSeq Size: 6251 bp
RefSeq ORF: 5091 bp
Locus ID: 59265
UniProt ID: [Q9WTR8](#)
Cytogenetics: 13p11
MW: 183.4 kDa
Gene Summary: a circadian rhythm protein; may have a role in the intracellular signaling in the suprachiasmatic nucleus [RGD, Feb 2006]

Product images:



Circular map for RR202102