

## Product datasheet for **RR202081**

### Utf1 (NM\_001131032) Rat Tagged ORF Clone

#### Product data:

Product Type:	Expression Plasmids
Product Name:	Utf1 (NM_001131032) Rat Tagged ORF Clone
Tag:	Myc-DDK
Symbol:	Utf1
Vector:	pCMV6-Entry (PS100001)
E. coli Selection:	Kanamycin (25 ug/mL)
Cell Selection:	Neomycin
ORF Nucleotide Sequence:	>RR202081 representing NM_001131032 Red=Cloning site Blue=ORF Green=Tags(s)

TTTTGTAATACGACTCACTATAGGGCGGCCGGAATTCGTCGACTGGATCCGGTACCGAGGAGATCTGCC  
GCC**CGATCGCC**

ATGCTGCTTCGTCGCCGAGGTTGCCGCTTTTGTCCGCGTCGCCAGGTAGCCCCGACGCCGAGCTAC  
GGCGGGCCGGGACGTCCCGGTGACTACGTCTGATGCCTTCGCTACTTCGGGCGCGATGGCGGATCCTGG  
CTCGCCCAAGGCTCCCGTGTCCCGGGCTCGGCGCAGCGCACGCCCTGGAGTGCCCGAGAGACGGAGCTA  
CTTCTGGGCACGCTGCTGCAGCCGGCGGTGTGGCGCTCACTCCTGCTGGACCGCCGGCAGGCTATACCCA  
CTTACCGCCGCGTGTCCGCCGCACTGGCCGTCAGCAAGTTCGGCGCACGCCCGCTCAGTGCCGCGCTCG  
CTACAAGTTCTCAAGGACAACTCCGAGACTCCAGGGCCAGCCGTCGGACCCCTTCGATGACCAGATC  
CGCCAGCTCATGGGGCTATTGGGTGACGATGGCCCGCGGGTCCGCCCGCTTCTGCTGGTCTGGAC  
GTCCCCAGCGCCGTGGTCTGCTCAGCCTTCTCCGCGTTAGCACCCGCACCTGCAGTGGTGGAGCAAGAGGC  
CGAGCTGCCGCTGGTGCAGAAACGCCGAACCTGCCCGCGCTCAGATTCAGCTCTTCCACTACGAAG  
TCTGCAGGCGTCCGCCGATTACCAGCTCCCCACCTCCTACGGCCATCGATACCTTGCTCCTGAGCCGG  
GCCATACCCTCGAATCCTCCCCGACGCCAACCCCGACCAGACACGGAGAACCCTGAATGAGCCTCCTGG  
CCTTTCCAGGGCGTGCTTCCCTCAGGTTGCTCCCGAGTCTCTGAATACCGCATTGCTGCAGACCTTG  
ACGCACCTGGGGCAGATCTCAACAGTTCTGGGCCCTCTGCGCGACCAGCTGTGACCCCTGAACCAGCAGC  
TGGAGCATCTACGAGGTTCTTCGACCAAACCGTTTCTCTGGCTGTGGGGTTCATTCTGGGCAGTGCAGC  
CTCCGAGCGGGGCATCCTTGGGGACTTGCGCCAA

**ACGCGT**ACGCGGGCCGCTCGAGCAGAACTCATCTCAGAAGAGGATCTGGCAGCAAATGATATCCTGGATT  
ACAAGGATGACGACGATAAGGTTTAA



[View online »](#)

**Protein Sequence:** >RR202081 representing NM\_001131032  
Red=Cloning site Green=Tags(s)

MLLRPRRLPAFAPPSPGSPDAELRAAGDVPVTTSDAFATSGAMADPGSPKAPVSPGSAQRTPWASARETEL  
 LLGTLQLPAVWRSLLLDRRQAIPTYRRVSAALARQVRRTPAQCRRRYKFLKDKLRDSQGQPSGPFDDQI  
 RQLMGLLGDDGPPRVRRRSAGPGRPQRGRSAFALAPAPAVVEQEAELPLAAENAEPAPALRFSSSTTK  
 SAGVRRITSSPPPTAIDTLPPEPGHTLESSPTTPDHDHTENPNEPPGLSQGRASPQVAPQSLNNTALLQTL  
 THLGDISTVLGPLRDQLSTLNQHVEHLRGSFDQTVSLAVGFILGSAASERGILGDLRQ

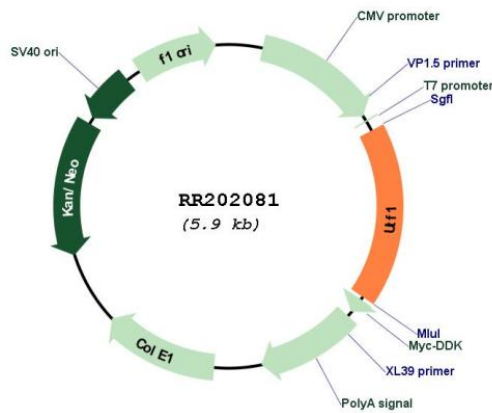
TRTRPLEQKLISEEDLAANDILDYKDDDDKV

**Restriction Sites:** SgfI-MluI

**Cloning Scheme:**



**Plasmid Map:**



**ACCN:** NM\_001131032

<b>ORF Size:</b>	1014 bp
<b>OTI Disclaimer:</b>	The molecular sequence of this clone aligns with the gene accession number as a point of reference only. However, individual transcript sequences of the same gene can differ through naturally occurring variations (e.g. polymorphisms), each with its own valid existence. This clone is substantially in agreement with the reference, but a complete review of all prevailing variants is recommended prior to use. <a href="#">More info</a>
<b>OTI Annotation:</b>	This clone was engineered to express the complete ORF with an expression tag. Expression varies depending on the nature of the gene.
<b>Components:</b>	The ORF clone is ion-exchange column purified and shipped in a 2D barcoded Matrix tube containing 10ug of transfection-ready, dried plasmid DNA (reconstitute with 100 ul of water).
<b>Reconstitution Method:</b>	<ol style="list-style-type: none"> <li>1. Centrifuge at 5,000xg for 5min.</li> <li>2. Carefully open the tube and add 100ul of sterile water to dissolve the DNA.</li> <li>3. Close the tube and incubate for 10 minutes at room temperature.</li> <li>4. Briefly vortex the tube and then do a quick spin (less than 5000xg) to concentrate the liquid at the bottom.</li> <li>5. Store the suspended plasmid at -20°C. The DNA is stable for at least one year from date of shipping when stored at -20°C.</li> </ol>
<b>RefSeq:</b>	<a href="#">NM_001131032.1</a> , <a href="#">NP_001124504.1</a>
<b>RefSeq Size:</b>	1030 bp
<b>RefSeq ORF:</b>	1017 bp
<b>Locus ID:</b>	681901
<b>Cytogenetics:</b>	1q41
<b>MW:</b>	36.1 kDa