

Product datasheet for **RR202071**

Adi1 (NM_199097) Rat Tagged ORF Clone

Product data:

Product Type: Expression Plasmids
Product Name: Adi1 (NM_199097) Rat Tagged ORF Clone
Tag: Myc-DDK
Symbol: Adi1
Synonyms: Alp1; Fe-ARD; MTCBP-1; Ni-ARD
Vector: pCMV6-Entry (PS100001)
E. coli Selection: Kanamycin (25 ug/mL)
Cell Selection: Neomycin
ORF Nucleotide Sequence: >RR202071 representing NM_199097
Red=Cloning site Blue=ORF Green=Tags(s)

TTTTGTAATACGACTCACTATAGGGCGCCGGAATTCGTCGACTGGATCCGGTACCGAGGAGATCTGCC
GCC**GCGATCGC**C

ATGGTGCAGGCCTGGTATATGGACGAGTCCACGGCCGACCCGCGGATGCCCCACCGCGCACAGCCCGACC
GCCCTGTGGGACTGGAGCAGCTGCGCACGCTCGGAGTGCTCTATTGGAAGCTAGATGCGGACAAGTATGA
GAATGATCCAGAAGTGGAAACAGATTCGAAAACAAGGAAGTACTCATGGATGGATATCATACCATATGC
AAAGATCACTTCCCAATTATGAGGAGAAGATCAAGATGTTCTTTGAGGAACATCTGCATCTGGATGAGG
AGATCCGCTACATCCTGGAGGGCAGCGGGTACTTCGATGTCAGGGACAAGGAGGACAAGTGGATCCGGAT
TTCTATGGAGAAGGGGGACATGATCACGCTTCTGCCGGCATTATCACCGCTTCACGCTGGACGAGAAG
AACTACGTGAAGGCCATGCGGCTGTTTGTGGAGAACCTGTATGGACACCATAACAACCGGGCAGCTGAVC
ATTTTGATGCCCGGGTACAGTACGTGAAGTTTTTGAAGGAACAGCAATTTTGATGCCCGGGTACAGTAC
GTGAAGTTTTTGAAGGAACAGCA

ACGCGTACGCGGCCGCTCGAGCAGAACTCATCTCAGAAGAGGATCTGGCAGCAAATGATATCCTGGATT
ACAAGGATGACGACGATAAGGTTTAA

Protein Sequence: >RR202071 representing NM_199097
Red=Cloning site Green=Tags(s)

MVQAWYMDDESTADPRMPHRAQPDRPVGLEQLRTLGLVLYWKLADADKYENDPELEQIRKTRNYSWMDIITIC
KDSLPNYEEKIKMFFEEHLHLDEEIRYILEGSGYFDVRDKEDKWIRISMEKGMITLPAGIYHRFTLDEK
NYVKAMRLFVGEVWTPYNRAAXHFDARVQYVKFLEGTAILMPGYST*SFWKEQ

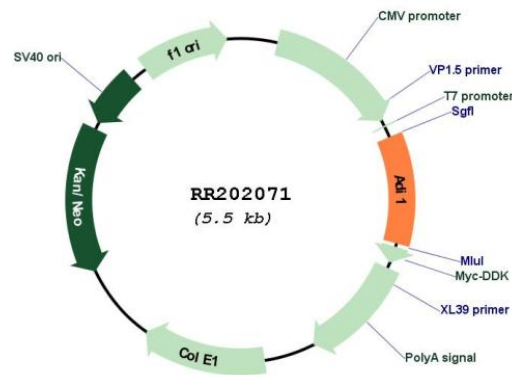
TRTRPLEQKLISEEDLAANDILDYKDDDDKV

Restriction Sites: SgfI-MluI



[View online »](#)

Cloning Scheme:

Plasmid Map:


ACCN: NM_199097

ORF Size: 537 bp

OTI Disclaimer: The molecular sequence of this clone aligns with the gene accession number as a point of reference only. However, individual transcript sequences of the same gene can differ through naturally occurring variations (e.g. polymorphisms), each with its own valid existence. This clone is substantially in agreement with the reference, but a complete review of all prevailing variants is recommended prior to use. [More info](#)

OTI Annotation: This clone was engineered to express the complete ORF with an expression tag. Expression varies depending on the nature of the gene.

Components: The ORF clone is ion-exchange column purified and shipped in a 2D barcoded Matrix tube containing 10ug of transfection-ready, dried plasmid DNA (reconstitute with 100 ul of water).

Reconstitution Method:

1. Centrifuge at 5,000xg for 5min.
2. Carefully open the tube and add 100ul of sterile water to dissolve the DNA.
3. Close the tube and incubate for 10 minutes at room temperature.
4. Briefly vortex the tube and then do a quick spin (less than 5000xg) to concentrate the liquid at the bottom.
5. Store the suspended plasmid at -20°C. The DNA is stable for at least one year from date of shipping when stored at -20°C.

RefSeq Size: 1333 bp

RefSeq ORF: 540 bp

Locus ID: 298934

UniProt ID: [Q562C9](#)

Cytogenetics: 6q16

MW: 21.4 kDa

Gene Summary: may be involved in the methionine salvage pathway and prostate homeostasis [RGD, Feb 2006]