

Product datasheet for **RR202053**

Mcm6 (NM_017287) Rat Tagged ORF Clone

Product data:

Product Type:	Expression Plasmids
Product Name:	Mcm6 (NM_017287) Rat Tagged ORF Clone
Tag:	Myc-DDK
Symbol:	Mcm6
Synonyms:	Mcmd6
Vector:	pCMV6-Entry (PS100001)
E. coli Selection:	Kanamycin (25 ug/mL)
Cell Selection:	Neomycin



[View online »](#)

ORF Nucleotide
Sequence:

>RR202053 representing NM_017287
Red=Cloning site Blue=ORF Green=Tags(s)

TTTTGTAATACGACTCACTATAGGGCGGCCGGGAATTCGTCGACTGGATCCGGTACCGAGGAGATCTGCC
GCC**CGCATCGCC**

ATGGACCTCGCAGCGGCTGCGGAGCCCGGTGCGGGAAGCCAGCACCCGGAGGTGCGCGATGAGGTGGCCG
AGAAATGTCAGAAGCTGTTCTAGACTTCTGGAAGATTCCAGGGTAGCGATGGAGAAATTAATACTT
GCAGTTCGCAGAGGAGCTGATTCGTCCTGAGAGAAACACACTGGTTGTGAGTTTTGCAGACCTGGAACAA
TTAAACCAACAACCTTTCTACCACCATTAGGAAGATTCTACAGAGTCTACCCCTACCTGTGTCGAGCCT
TGAAGACCTTTGTCAAAGACCGAAAGGAGATCCCTTTTGTAAGGATTTTTATGTTGCGTCCAAGACCT
ACCCACTAGACACAAGATTCTGAGCTCACTTCTCCAGGATCGGGCTACTCACTCGCATCAGTGGCGAG
GTGGTGCACACTACCCAGTGCACCCGAGCTTGTGAGTGGGACTTCTGTGCCTCGACTGCCAAACAG
TGATCAAGGACGTAGAGCAGCAGTTCAAATACACACAGCCGAGCATCTGCCGCAATCCAGTATGCCCAA
CAGGAAGAGGTTCTTCTAGACACCAATAAATCGAGATTCGTTGATTTTCAAAGGTTTCGATTTCAAGAG
ACTCAAGCGGAGCTTCCCGGGGAAGCATCCCCGGGATTTGGAGGTTGCCTGAGGGCCGAAGCCGTGG
AGTCAGCCAGGCTGGTGACAGGTGTGACTTACGGGGACGCTGATTGTTGTGCCGGACGCTCCAAGCT
TAGCACACCAGGAGCACGTGCGGAGACCACTCCCGAGTCAGTGGCGCTGACGGGTATGAGACAGAAGGC
ATCCGAGGGCTCCGAGCCCTGGGTGTGAGAGACCTGTCATACAGGCTGGTCTTCCCTTGCCTGCTATGTTG
CACCAACCAACCCACGATTTGGAGGGAAGAAGCTCAGAGATGAGGAGCAGACAGCTGAGAGCATTAAAGAA
CCAAATGACGGTGAAGGAATGGGAAAAGGTGTTGAAATGAGTCAGGACAAAAACCTGTACCACAATCTC
TGCACTAGCCTCTTCCCTACGATCCACGGCAATGATGAAGTAAACGTTGGCGCTTTGCTGATGCTGTTCCG
GTGGCGTTCCCAAGACAACAGGGGAAGGAACCTCTTTCGTGGGATATAAATGTTTGCATTGTTGGGGA
TCCAAGTACAGCTAAGAGCCAGTTTCTCAAGCATGTGGATGAGTTCAGTCCCAGAGCTGTGTATACCAAGT
GGCAAGGCCTCCAGTGCTGCCGGCTTGACAGCAGCTGTGGTGAGAGATGAGGAATCTCACAGTTTTGCA
TCGAGGCTGGAGCGTTGATGCTGGCTGATAACGGTGTCTGTTGCATTGATGAGTTTGATAAGATGGACAT
GCGGGACCAAGTTGCTATTACAGAGCTATGGAGCAGCAGACCATATCTATCACTAAAGCCGGAGTGAAG
GCAACTCTGAATGCCAGGACATCCATTTAGTGCAGCAAACCTGTGAGCGGACACTACGACAGGTCAA
AATCTCTGAAACAGAATCAATCTGTCAGCGCCATCATGTCCCGCTTTGACCTCTTCTCATTGTTGGT
GGATGAGTGCAATGAGGTGACAGATTATGCTATTGCCAGGCGCATAGTAGACTTGCATTCGAGGATCGAA
GAATCGATAGACCGGTTTATCCCTTGTATGATAAAGAAGGTATCTTCTTCCGCCGACAGTTTAAGC
CCAAGATTTCAAAGAGTCAGAGGACTTCAATTGTGGAGCAGTACAACCGCTCCGCCAGAGGGATGGCTC
TGGGATACCAAGTCGTCGTGGAGAATCACTGTGAGACAGCTTGAGAGCATGATCCGACTCTCAGAAATCG
ATGGCCCGCATGCACTGTGTGATGAGGTCCAGCCTAAACATGTGAAGGAAGCTTTTCGATTACTGAATA
AATCGATCATCCGTGTAGAAACCGCTGACGTCAATCTAGATCAAGAGGAAGAGATCCAGATGGAGACGGA
TGAGGGACCAGGAGGCATCAATGGTCATGCTGACAGCCCTGCCCTGTGAACGGGTTCAATGGCTCTGGT
GAAGATGCCAGTCAGGAGACCGTTCCCAAGCCCTCCCTTAGGCTGGGCTTTGCTGAATACTGCCAATCT
CTAACCTCATCGTCTTACCTCAGGAAAATGGAAGAAGAGGAGGATGAGTCAGCCCTAAGAGGAGCGGA
GCTGGTCAACTGGTACCTGAAGGAAATCGAGTCGGAAATCGACTCTGAAGAAGAGCTCATAAATAAGAAG
AGGATCATAGAGAAGGTTGTTTCATCGTCTCACACACTACGATCACGTTCTGATTGAGCTACCCAGGCTG
GACTGAAAGGCTCCAGTGAAGGAAGCGAGAGCTATGAGGAAGATCCTTACCTGGTGTAGTCAACCCGAAC
CTTGCTTGAAGAT

ACGCGTACGCGGCCGCTCGAGCAGAACTCATCTCAGAAGAGGATCTGGCAGCAATGATATCCTGGATT
ACAAGGATGACGACGATAAGGTTTAA

Protein Sequence: >RR202053 representing NM_017287
Red=Cloning site Green=Tags(s)

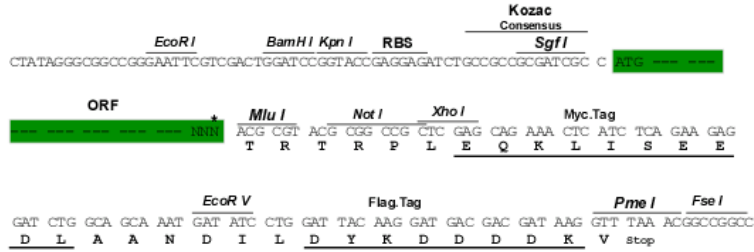
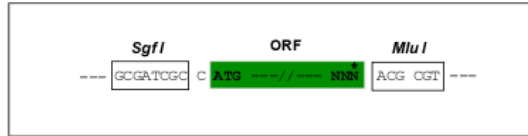
MDLAAAEPGAGSQHPEVRDEVAEKCKLFLDFLEEFQGSDEIKYLQFAEELIRPERNTLVVSFADLEQ
FNQQLSTTIQEEFYRVYPYLCRALKTFVKDRKEIPFAKDFYVAFQDLPTRHKIRELTSSRIGLLTRISGQ
VVRTHPVHPELVSGTFLCLDCQTVIKDVEQQFKYTQPSICRNPCANRKRFLDNTKSRFVDFQKVRIQE
TQAEPRGSIPRSLEVVLRAEAVESAQAGDRCDFGTGLIVVPDVSKLSTPGARAETNSRVSGADGYETEG
IRGLRALGVRDLSYRLVFLACYVAPTNPFRFGKELRDEEQTAESIKNQMTVKEWEKVFEMSQDKNLYHNL
CTSLFPTIHGNDVVRGVLMLFGGVPKTTGEGTSLRGDINVCIVGDPSTAKSQFLKHVDEFSPRAYTS
GKASSAAGLTAAYVRDEESHEFVIEAGALMLADNGVCCIDEFDKMDMRDQVAIHEAMEQQTISITKAGVK
ATLNARTSILAAANPVSGHYDRSKSLKQINLSAPIMSRFDLFFILVDECNEVTDYAIARRIVDLHSRIE
ESIDRVYSLDDIRRYLLFARQFKPKISKESEDFIVEQYKRLRQRDGGSGITKSSWRITVRQLESMIRLSES
MARMHCCDEVQPKHVKEAFRLLNKSIIRVETPDVNLQEEEEIQMETDEGPGGINGHADSPAPVNGFNGSG
EDASQETVPKPSRLGFAEYCRISNLIVLHLRKMEEEEDESALKRSELVNWYLKEIESEIDSEEELINKK
RIIEKVHRLTHYDHVLIELTQAGLKSSEGESSEYEEDPYLVVNPNYLLED

TRTRPLEQKLISEEDLAANDILDYKDDDDKV

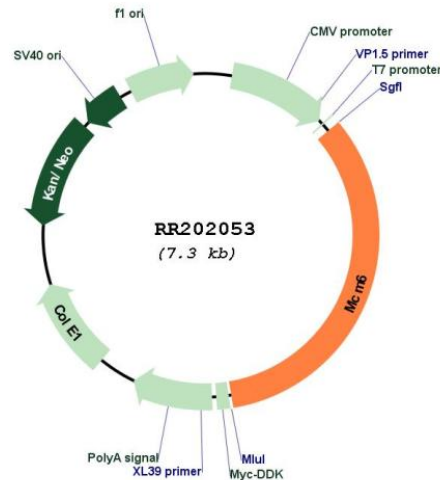
Restriction Sites: Sgfl-MluI

Cloning Scheme:

Cloning sites used for ORF Shutting:



* The last codon before the Stop codon of the ORF

Plasmid Map:


ACCN: NM_017287

ORF Size: 2463 bp

OTI Disclaimer: The molecular sequence of this clone aligns with the gene accession number as a point of reference only. However, individual transcript sequences of the same gene can differ through naturally occurring variations (e.g. polymorphisms), each with its own valid existence. This clone is substantially in agreement with the reference, but a complete review of all prevailing variants is recommended prior to use. [More info](#)

OTI Annotation: This clone was engineered to express the complete ORF with an expression tag. Expression varies depending on the nature of the gene.

Components: The ORF clone is ion-exchange column purified and shipped in a 2D barcoded Matrix tube containing 10ug of transfection-ready, dried plasmid DNA (reconstitute with 100 ul of water).

Reconstitution Method:

1. Centrifuge at 5,000xg for 5min.
2. Carefully open the tube and add 100ul of sterile water to dissolve the DNA.
3. Close the tube and incubate for 10 minutes at room temperature.
4. Briefly vortex the tube and then do a quick spin (less than 5000xg) to concentrate the liquid at the bottom.
5. Store the suspended plasmid at -20°C. The DNA is stable for at least one year from date of shipping when stored at -20°C.

RefSeq: [NM_017287.1](#), [NP_058983.1](#)

RefSeq Size: 2929 bp

RefSeq ORF: 2466 bp

Locus ID: 29685

Cytogenetics: 13q13

MW: 92.8 kDa

Gene Summary: belongs to a family of early S-phase proteins required for DNA replication; may play a role in cell-cycle progression and DNA replication [RGD, Feb 2006]