

Product datasheet for **RR202038**

Gsta2 (NM_017013) Rat Tagged ORF Clone

Product data:

Product Type: Expression Plasmids
Product Name: Gsta2 (NM_017013) Rat Tagged ORF Clone
Tag: Myc-DDK
Symbol: Gsta2
Synonyms: Gsta1
Vector: pCMV6-Entry (PS100001)
E. coli Selection: Kanamycin (25 ug/mL)
Cell Selection: Neomycin
ORF Nucleotide Sequence: >RR202038 representing NM_017013
Red=Cloning site Blue=ORF Green=Tags(s)

TTTTGTAATACGACTCACTATAGGGCGGCCGGAATTCGTCGACTGGATCCGGTACCGAGGAGATCTGCC
GCC**GCGATCGCC**

ATGTCTGGGAAGCCAGTGCCTTCACTACTTCAATGCCCGGGCAGAATGGAGTGCATCCGGTGGCTCCTGG
CTGCAGCAGGAGTGGAGTTTGTGAGAAGTTTATACAGAGTCCAGAAGACTTGGAAAAGCTAAAGAAAGA
CGGAATTTGATGTTTGACCAAGTGCCCATGGTGGAGATTGACGGGATGAAGCTGGCACAGACCAGAGCC
ATTCTCAACTACATCGCCACCAAATATGACCTCTATGGGAAGGACATGAAGGAGAGGCCCTGATTGACA
TGTACACCGAAGGCATTTAGATCTGACTGAAATGATTATGCAATTGGTAATATGTCCCCAGACAAAA
AGAAGCCAAGACCGCCTTGGCAAAGACAGGACAAAAACCGGTACTTGCCTTTCCTTTGAAAAGGTGTTG
AAGAGCCATGGCCAAGACTACCTTGTAGGTAACAGGCTGACCCGGGTAGACATCCACCTGCTGGAATTC
TCCTCTATGTTGAAGAGTTTGTGCCAGCCTTCTGACCTTTCCCTCTGCTGAAGGCCTCAAGAGCAG
AATCAGCAGCCTCCCAATGTGAAGAAGTTCCTGCAGCCTGGCAGTCAGAGAAAGCTTCCCGTGGATGCA
AAACAAATCGAAGAAGCAAGGAAGATTTCAAGTTT

ACGCGTACGCGGCCGCTCGAGCAGAAACTCATCTCAGAAGAGGATCTGGCAGCAAATGATATCCTGGATT
ACAAGGATGACGACGATAAGGTTTAA



[View online »](#)

Protein Sequence: >RR202038 representing NM_017013
 Red=Cloning site Green=Tags(s)

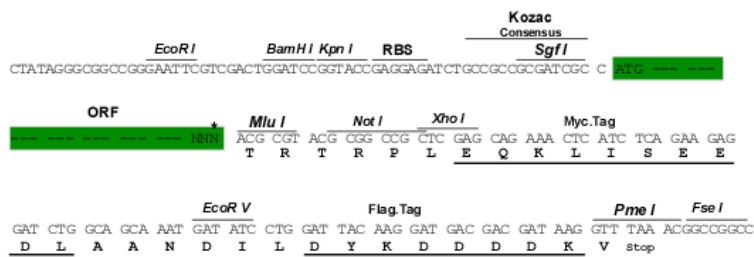
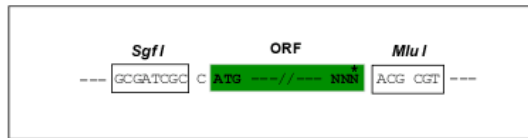
MSGKPVLYHFNARGRMECIRWLLAAAGVEFDEKFIQSPEDLEKLLKKGDNLMFDQVPMVEIDGMKLAQTRA
 ILNYIATKYDLYGKDMKERALIDMYTEGILDLTEMIMQLVICPPDQKEAKTALAKDRTKNRYLPFAFEKVL
 KSHGQDYLGNRLTRVDIHLLELLLYVEEFDASLLTSFPLLKAFKSRISLPLNVKFLQPGSQRKLQPVDA
 KQIEEARKIFKF

TRTRPLEQKLISEEDLAANDILDYKDDDDKV

Restriction Sites: SgfI-MluI

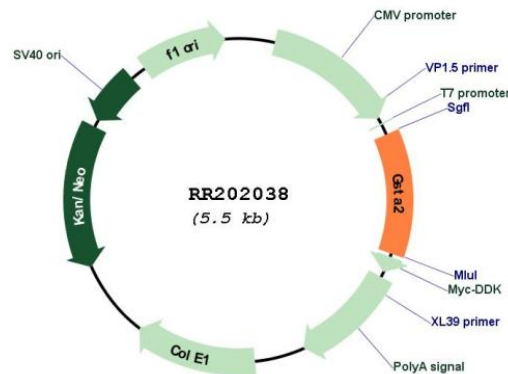
Cloning Scheme:

Cloning sites used for ORF Shuttling:



* The last codon before the Stop codon of the ORF

Plasmid Map:



ACCN: NM_017013

ORF Size: 666 bp

OTI Disclaimer:	The molecular sequence of this clone aligns with the gene accession number as a point of reference only. However, individual transcript sequences of the same gene can differ through naturally occurring variations (e.g. polymorphisms), each with its own valid existence. This clone is substantially in agreement with the reference, but a complete review of all prevailing variants is recommended prior to use. More info
OTI Annotation:	This clone was engineered to express the complete ORF with an expression tag. Expression varies depending on the nature of the gene.
Components:	The ORF clone is ion-exchange column purified and shipped in a 2D barcoded Matrix tube containing 10ug of transfection-ready, dried plasmid DNA (reconstitute with 100 ul of water).
Reconstitution Method:	<ol style="list-style-type: none">1. Centrifuge at 5,000xg for 5min.2. Carefully open the tube and add 100ul of sterile water to dissolve the DNA.3. Close the tube and incubate for 10 minutes at room temperature.4. Briefly vortex the tube and then do a quick spin (less than 5000xg) to concentrate the liquid at the bottom.5. Store the suspended plasmid at -20°C. The DNA is stable for at least one year from date of shipping when stored at -20°C.
RefSeq:	NM_017013.4 , NP_058709.2
RefSeq Size:	831 bp
RefSeq ORF:	669 bp
Locus ID:	24422
UniProt ID:	P00502
Cytogenetics:	8q31
MW:	25.6 kDa
Gene Summary:	mRNA expression is induced by phenobarbital and by trans-stilbene oxide [RGD, Feb 2006]