

Product datasheet for **RR202014**

Emx2 (NM_001109169) Rat Tagged ORF Clone

Product data:

Product Type: Expression Plasmids
Product Name: Emx2 (NM_001109169) Rat Tagged ORF Clone
Tag: Myc-DDK
Symbol: Emx2
Synonyms: RGD1564797
Mammalian Cell Selection: Neomycin
Vector: pCMV6-Entry (PS100001)
E. coli Selection: Kanamycin (25 ug/mL)
ORF Nucleotide Sequence: >RR202014 representing NM_001109169
Red=Cloning site Blue=ORF Green=Tags(s)

TTTTGTAATACGACTCACTATAGGGCGGCCGGGAATTCGTCGACTGGATCCGGTACCGAGGAGATCTGCC
 GCCCGATCGCC

ATGTTTCAGCCGGCGCCTAAGCGCTGCTTCACCATCGAGTCGCTGGTGGCCAAGGACAGTCCCCTGCCTG
 CCTCACGCTCCGAGGATCCCATCCGTCCCGCGGCGCTCAGCTACGCCAATTCAGCCCCATAAATCCGTT
 CCTCAACGGCTTCCACTCGGCCCGCCGCCCGCCGCGGGCAGGGCGTCTACTCCAACCCGGACTTG
 GTGTTCCGCCGAGGCGGTCTCGCACCCGCCAACCCCGCGTCCCGGTGCACCCGGTGCCGCCGCCGACG
 CCCTGGCCGCCACCCCTGCCCTCCTCGCATTCCGCACACCCCTCTTCGCCTCGCAGCAGCGGGACCC
 GTCCACCTTCTACCCCTGGCTCATCCACCGTACCGATATCTGGGTATCGCTTCCAAGGGAACGACACA
 AGTCCCAGAGTTTCTTTTGCACAACGCTCTGGCTCGAAAGCCGAAGCGGATTCCAACCGCCTTCTCTC
 CGTCCCAGCTTTAAGGCTAGAACACGCGTTTCGAGAAGAATCATTACGTGGTGGGAGCGGAAAGGAAGCA
 GCTGGCGCACAGTCTCAGCCTTACGAAACTCAGGTAAGATGGTTTCAGAACCGGAGAACGAAATTC
 AAAAGGCAAAAGCTAGAGGAAGAAGGCTCAGATTCCTCAAAAAGAAAAAGGGACACACCACATTAACC
 GGTGGAGAATTGCTACCAAGCAGGCGAGTCCGGAGGAAATAGACGTGACCTCAGACGATGGTGGAGAATT
 GCTACCAAGCAGGCGAGTCCGGAGGAAATAGACGTGACCTCAGACGAT

AGCGGACCGACGCGTACGCGGCCGCTCGAGCAGAACTCATCTCAGAAGAGGATCTGGCAGCAAATGATATCC
 TGGATTACAAGGATGACGACGATAAGGTTTAA



[View online »](#)

Protein Sequence: >RR202014 representing NM_001109169
 Red=Cloning site Green=Tags(s)

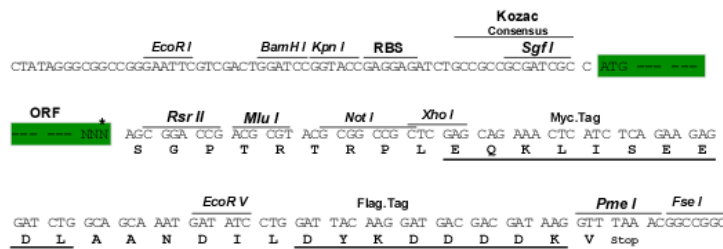
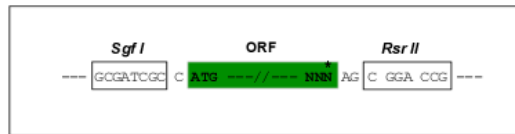
MFQPAPKRCFTIESLVAKDSPLPASRSEDPIRPAALSYANSSPINPFLNGFHSAAAAAAAGRGVYSNPDL
 VFAEAVSHPPNPVAVPVHPVPPHALAAHPLPSSHSPHPLFASQQRDPSTFYPLWIHRYRYLGHFRFGNDT
 SPESFLLHNALARKPKRIRTAFAFSPQLLRLEHAFKKNHYVVGAEKQLAHSLSLTETQVKVWFQNRRTKF
 KRQKLEEEGSDSQKKKGTHHINRWRIATKQASPEEIDVTSDDGGELLPSRRVRRK*T*PQT

SGPTRTRPLEQKLI SEEDLAANDILDYKDDDDKV

Restriction Sites: SgfI-RsrII

Cloning Scheme:

Cloning sites used for ORF Shuttling:



* The last codon before the Stop codon of the ORF

ACCN: NM_001109169

ORF Size: 759 bp

OTI Disclaimer: The molecular sequence of this clone aligns with the gene accession number as a point of reference only. However, individual transcript sequences of the same gene can differ through naturally occurring variations (e.g. polymorphisms), each with its own valid existence. This clone is substantially in agreement with the reference, but a complete review of all prevailing variants is recommended prior to use. [More info](#)

OTI Annotation: This clone was engineered to express the complete ORF with an expression tag. Expression varies depending on the nature of the gene.

Components: The ORF clone is ion-exchange column purified and shipped in a 2D barcoded Matrix tube containing 10ug of transfection-ready, dried plasmid DNA (reconstitute with 100 ul of water).

Reconstitution Method:

1. Centrifuge at 5,000xg for 5min.
2. Carefully open the tube and add 100ul of sterile water to dissolve the DNA.
3. Close the tube and incubate for 10 minutes at room temperature.
4. Briefly vortex the tube and then do a quick spin (less than 5000xg) to concentrate the liquid at the bottom.
5. Store the suspended plasmid at -20°C. The DNA is stable for at least one year from date of shipping when stored at -20°C.

RefSeq Size: 2946 bp

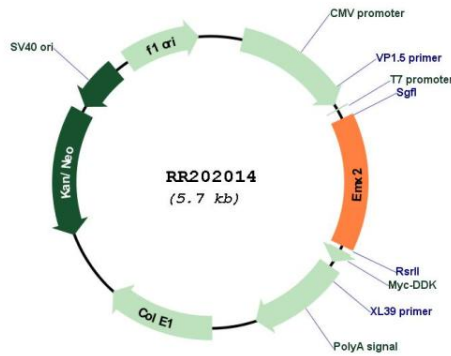
RefSeq ORF: 762 bp

Locus ID: 499380

Cytogenetics: 1q55

MW: 28.4 kDa

Product images:



Circular map for RR202014