

Product datasheet for **RR202013**

Plekha4 (NM_199101) Rat Tagged ORF Clone

Product data:

Product Type:	Expression Plasmids
Product Name:	Plekha4 (NM_199101) Rat Tagged ORF Clone
Tag:	Myc-DDK
Symbol:	Plekha4
Synonyms:	MGC72599
Mammalian Cell Selection:	Neomycin
Vector:	pCMV6-Entry (PS100001)
E. coli Selection:	Kanamycin (25 ug/mL)



[View online »](#)

ORF Nucleotide Sequence:

>RR202013 representing NM_199101
 Red=Cloning site Blue=ORF Green=Tags(s)

TTTTGTAATACGACTCACTATAGGGCGGCCGGGAATTCGTCGACTGGATCCGGTACCGAGGAGATCTGCC
 GCC**CGGATCGCC**

ATGGAGCAGGGCCGACCCAGGAGCAGCCTCAGCCTGACCAGCAGTGTCTCCACTGTATCCTCCCTGAGCA
 GCCTGAGCGCCAAGAAGCCTACTCGTGTGGTACACAAGGTCCATGCCTTTGGGAAAAGGAACAATGCACT
 TCGGCGAGACCCCAACCTGCCTGTGCACATTCTGTGGCTGGCTGCATAAACAGGATAGCTCAGGCCTCCGG
 CTGTGGAAACGCCGTTGGTTCGTCCTTTAGGCCATTGCCTTTCTACTACAAGGACAGCAGAGAAGAGA
 GTGTCTCTGGCAGTGTACTGTTACCCAGCTACAGTGTGAGCCGGATGGGCCAGGAGCCCAAGGAGCCG
 GCGATTACCTTCACGGCAGAGCACCCGGGCATGAGGACCTATGTCCTTGCAGCTGACACATTGGAAGAC
 CTGAGAGGTTGGCTTCGAGCACTGGGAAAGCCTCTCGTGCAGAGGGGAAAGATTGTGGACTACCGAGGT
 CCCCTGCACGTCCAGGCCTGGGAAAGTCCCAGGGTCCCAGGAGACCCCGAGGTGAACAGAAGGGA
 AGAGGGGCGAACCTCAGAATCACCAGAGGTAGCTCCGCTCTCCAGAGGTCTGGCAGACATGAAATGCAC
 GCTCCCGGCTCTTCAGCTGATCTGCAGCCTGACACCTGGAGTCCGAGAACCAGGAGCCAGAGCCGTTCT
 CACCCCTCTCCCGGCTCCCTCCCTCTGAGCCTTCCCGTCTCGTTCTGCTCCGGTACGGCGACCACC
 TCTCTCAGCAGGAGACATTTCAATTCCTGCTCGACCGCACACTCCCTTGAGTTCGATCGATGTCGACCT
 CCTCTGGATTGGGGACCCCAAAGACAGACCCTCTCCGACCTCCCATCCACGCCAGGACCTTTCTCTG
 AAGCAGGCGGAGGACGGCCACCCAGGAGCCCAAGCTCCGGACACCAGAGCATAGAACACAGTCTACCCA
 GGTCTCCTCTGGTTCATCCACTACCTCCAGCTGCCCCAAGACCCCTGGCACCCAGGCTTCCATGATT
 TTGCTGCCAGGACCCCTGTGGACTCACTTTGCATCAGAGCTTGAGACAGATACTTTGTTGACCAAGC
 TGTGTGGCAGGACCCGCTCTGAGGCAGCTACAAGAGGATCTGGACAAGAGGCAGGAAGAGAAGGAGCA
 GCTAGAGGCAGCCTTGGAGCTGACCCGGCAGCAGCTGGGTGAGGCTACCCGGGAGGCTGCAGCTTCTGGG
 AAGGCCTGGGGTGCACAACGCCTCTGCAGGACCGGCTGGTGAATGTGAGGGTGTCTGTGTACCTGA
 CTCAGGAGCGAGAGCGGGTTTGGGACACGTACAGCGGCCTGGAGCAGGATCTCGGCACGTTAAGAGAGAC
 TCTCGAGTACCTGCTGCACCTCGGGTCTCCCAAGGACCGTGCCTGCCCCAGCAGCAGCTGTGGATGGT
 GAGGACACATTGGCAGGTCTAGGTGGCCCCAGAAACAGCCCCACATACTGAGCCCAAGTCTCCATCCC
 CTGACCCCAACGAGAGGAGTCTCAGAGCGGGAGAGCCTTTAGAGTCACTGGAGCTCAGTCCCCTCA
 GTCCCTGAGGTGACTGGGGTCAACCCCAAGGAGGTGACAGAGCCCTCAGCAGCTCTCAGTCAAGTGT
 GGGTCTCCAAGAGTCTCCCGGCATCCAGCCCTGAATGTCCGCAACAGTCATCTCCGCTGTGAGAACTA
 AGGCCCCGCTGGCGCGGCTAGGATGAGCGCTCAGGAGCAGCTGGAGCGCATGCGTAGAAACCAAGCATG
 TGGGCTCTCTTCTCGCCCTACCTCCCAAGGCTCCTGACCCTGGGAAGGACACTATCCCAAGTTCCA
 CGCCAGCCTGACATGGAGCAGAGGCCTATTGTAGGAGCTGCGAAATGGCTCAGGAGTTCGGGTCATGGA
 GTAGTCTTAGGCACTCCACAACCTACTCACCCGTGTCTGGAGGCCACCGGAAACGAGTGTGCTCAGCCTCTC
 CCAAGCTTTGCTACAGAGGCTTCCAGTGGCAGAGGCTGATGACAGCCTCTCCAGAGAGAAATTTGGAC
 ACCAGGGGAGACTGTCTCCAGCCAAGTCCACAGCCTCCAGTGAAGAGCTGCCCCAGGTACCTCGTCCC
 CAATTTCTACAAGGCTAACTCGGCTACCACAGGGTCTCATGCCAAGGGAGTGGGAGAGGCCTGGCTCC
 GTGGGAGCCAGGTGGGACCCCTGGGAAGGCCCTCCAGCTCTGGCCAGGAAGAGGGGGCATGGCCCTG
 AGAGTCACTCTGCTGCAGTCCAGCTTT

ACGCGTACGCGGCCGCTCGAGCAGAACTCATCTCAGAAGAGGATCTGGCAGCAAATGATATCCTGGATT
 ACAAGGATGACGACGATAAGGTTTAA

Protein Sequence: >RR202013 representing NM_199101
 Red=Cloning site Green=Tags(s)

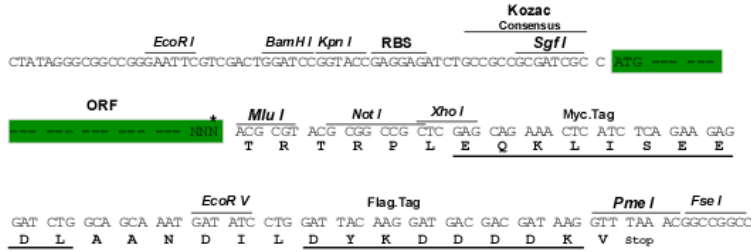
```
MEQGRPRSSLSLTSSASTVSSLSL SAKKPTRVVHKVHAFGKRNNALRRDPNLPVHIRGWLHKQDSSGLR
LWKRRWFVLSGHCLFYKDSREESVLG SVLLPSYSVRPDGPGAPRGRRF TFTAHPGMRTYVLAADTLED
LRGWLRLALGKASRAEGEDCGLPRSPARPRPGEGPGGPGPPEVNRREEGR TSE SPEVAPLSRGPGRHEMH
APGSSADLQPD TWSRRTSRPEPF SPLSRPPSPLSLPRPSAPVRRPPLSAGDISFPARPH TPLSRIDVRP
PLDWGPQRQTL SRPPIPRRGP FSEAGGRPPRSPQLRTP EHR TQSTQVSSGSSTYLQLPPRPPGTQASMI
LLPGPPVDSTLHQ SLETDTLLTKL CGQDRLLRQLQEDL DKRQEEKEQLEAALELTRQQLGQATREAAASG
KAWGRQRL LQDRLVNVRAALCHLTQERERVWD TYSGLEQDLGTLRETLEYLLHLGSPQDRASAQQQLWMV
EDTLAGLGGPQKQPPHTEPKSPSPAPQREESSERESLSE SLELSSPQSPEVDWGQPPGGDRALSSSQSGV
GSPRVSRASSPECRQSSPLLRTKAPLARPRMSAQEQLEMRRNQACGLSLPRPTSPRLLTLGRTLSPVP
RQPDMEQRPIVGA AKWLRSSGSWS SPRHSTTYSPVSGGHRERVL SLSQLATEASQWHRLMTASPERNLD
TRGDCLQSPQP PSEELPQVTSSPTSHKANSATTGFCQGSGRGLAPWEPRWDPGKAPPALAQEEGAWPL
RVTLLQSSF
```

TRTRPLEQKLI SEEDLAANDILDYKDDDDKV

Restriction Sites: Sgfl-MluI

Cloning Scheme:

Cloning sites used for ORF Shutting:



* The last codon before the Stop codon of the ORF

ACCN: NM_199101

ORF Size: 2337 bp

OTI Disclaimer: The molecular sequence of this clone aligns with the gene accession number as a point of reference only. However, individual transcript sequences of the same gene can differ through naturally occurring variations (e.g. polymorphisms), each with its own valid existence. This clone is substantially in agreement with the reference, but a complete review of all prevailing variants is recommended prior to use. [More info](#)
OTI Annotation: This clone was engineered to express the complete ORF with an expression tag. Expression varies depending on the nature of the gene.

Components: The ORF clone is ion-exchange column purified and shipped in a 2D barcoded Matrix tube containing 10ug of transfection-ready, dried plasmid DNA (reconstitute with 100 ul of water).

Reconstitution Method:

1. Centrifuge at 5,000xg for 5min.
2. Carefully open the tube and add 100ul of sterile water to dissolve the DNA.
3. Close the tube and incubate for 10 minutes at room temperature.
4. Briefly vortex the tube and then do a quick spin (less than 5000xg) to concentrate the liquid at the bottom.
5. Store the suspended plasmid at -20°C. The DNA is stable for at least one year from date of shipping when stored at -20°C.

RefSeq: [NM_199101.1](#), [NP_954532.1](#)

RefSeq Size: 2833 bp

RefSeq ORF: 2340 bp

Locus ID: 308584

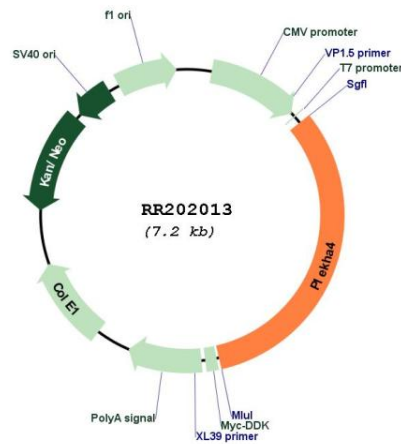
UniProt ID: [P60669](#)

Cytogenetics: 1q22

MW: 85.6 kDa

Gene Summary: human homolog is a phosphatidylinositol-three-phosphate-binding protein [RGD, Feb 2006]

Product images:



Circular map for RR202013