

Product datasheet for **RR202009**

Map4k1 (NM_001106243) Rat Tagged ORF Clone

Product data:

Product Type:	Expression Plasmids
Product Name:	Map4k1 (NM_001106243) Rat Tagged ORF Clone
Tag:	Myc-DDK
Symbol:	Map4k1
Synonyms:	Hpk1
Mammalian Cell Selection:	Neomycin
Vector:	pCMV6-Entry (PS100001)
E. coli Selection:	Kanamycin (25 ug/mL)



[View online »](#)

ORF Nucleotide Sequence:

>RR202009 representing NM_001106243
 Red=Cloning site Blue=ORF Green=Tags(s)

TTTTGTAATACGACTCACTATAGGGCGGCCGGGAATTCGTCGACTGGATCCGGTACCGAGGAGATCTGCC
 GCC**CGGATCGCC**

ATGGCCCTTGTGGACCCTGACATCTTTAATAAGGACCCTCGAGAACACTATGATCTACTGCAGCGACTGG
 GTGGTGGAACTATGGAGAAGTGTCAAGGCTCGCGACAAGGTGTCTAAGGACCTAGTGGCTTTGAAGAT
 GGTGAAGATGGAGCCTGATGATGACGTCTTACCTTCAGAAGGAGATTCTCATGCTGAAATCTTGCCGG
 CACGCCAACATCGTGGCTTACCATGGCAGTTACCTCTGGCTTCAGAAGCTATGGATCTGCATGGAATTTT
 GTGGAGCCGGTCCCTCCAGGACATCTACCAAGTGACCGGCTCTGTCCGAGCTCCAGATCAGCTATGT
 GTGCCGGGAAGTGTGCAGGGACTGGCTACCTGCATTACAGAAGAAGATACATCGAGACATCAAGGGA
 GCCAACATCCTCATCAATGACTCCGGGGAGGTTAACTGGCTGACTTTGGGATCTCAGCCCAGATTGGGG
 CAACACTGGCCCCAGCCTGTCTTTCATTGGAACACCATACTGGATGGCTCCAGAGGTGGCAGCTGTGGC
 CCTGAAAGGTGGATAACAATGAGCTGTGTGACATCTGGTCTTTGGCATCACAGCCATCGAGCTGGCCGAG
 CTTAGCCCCCTCTTTGATGTGACCCCCCTCAGGGTCTCTTCTCATGACCAAGAGCGGCTACCAGC
 CTCGCGGCTAAAGGAAAAGGGCAAATGGTCTCTTCTTCCACAACCTTTGTCAAAGTACCCCTCACTAA
 GAACTCCAAGAAACGCCCAAGTCCACCAAGATGCTCAGTCATCAGCTGGTGTCCAGCCAGGACTGAAC
 AGAGGCCCTGATCTTGGATCTTCTTGACAAAATGAAGAATCCTGGGAAAGGGCTGCCCGTTGAGATTGAAG
 ATGAGGAGCCTGAGCCTCCCCCTGCCATCCCTCGGCGGATCAGATCTACCTACCGGGCCAGCTCGTGGG
 GATTCCAGACGCAGATTGCTGTCCGGCGGCATGGAGTCCAGAGGCCAGATGTGTGGAATGCAGATCT
 CAGGCTGACACTGTTCTTTACAGCCCTCTGCAGACTTCAGGAGCACCAGTCCCAGGAGCCAACCTCAG
 ACTCTGATGACGACTATGATGATGTGGACATTCCTGCCCTTCAGAGAACCTACCTCTCCCTGCCCCC
 CAAGCCCAAAATTCGGTCTCCATCAGATGAGTCTGGAGGAGTTAGGGACGACGGGCAACTGAGCCCA
 GGGGTGTGTGCCGTGCGCCAGTGGCCCTCTCCACGATTCCCCGTCCTGGACCTCCCCAGCCACCC
 GCAGCCCTCATCTCACAGCCGTTAGATCCCTCGCTATGGAACCCAGTCCCCGGAGCCAGGCCAGCC
 CCCACTCTACCCCTAGGAAGGAAAAGATGAGGAAAAGATGGAGAACGAGAAGCGCCGAGAGGAATAC
 ACCCTTCTGTGAAATGTTCAACGGCTGTCCCCTCCAGATCCACAGTACGGCTGCCTGGACACATCCCT
 CGACGAAAGACCAGCATCTGCTCCTGGGTGCAGAGGAAGGCATTTTCATACTGAACCGGAATGATCAGGA
 GGCCACGCTGAAATGATCTTCTGGCCGCACAACCTGGCTGTACTGCATCAACAACCTCCTCATGTCT
 CTCTCAGGGAAGACCCCACTGTATTCTCATAGTATCCTGGGCCTTCTGGAAAGAAAAGAGGTCAGAA
 CAGGAAGCCCCATCGCTCACATCAGCCCTACCGGTTCTGGCAAGAAAGAACATGGTCTCCAGTAAGAT
 CCAGGACACCAAAGGCTGCCGGGCTTGTGTGTGGCCGAGGGTGCCAGCTCTGGGGGCCATTCTGTGT
 GGAGCATTGGAGACCTCTGTGGTTCTGTCCAGTGGTACCAGCCAATGAACAAATTTCTGTCTGTCCGGC
 AGGTGTTGTTCCCGCTGCCACGCCACTGCCGGTGTTCGCGCTGTGACAACGCCCGGCTCCGAGCTGCC
 GGCTGTGTGCATCGGCGTGAGCCCGGGCAAGCGGCAAAGTCCGTACTCTTCCACACCGTGCCTTCGGT
 GCCTTGTCTGTGGCTGGACGACTCCAGCACCAGCACAAGGGACCAGTGCAGGTGATCCAAGTAAAGG
 AAGACATGGTGTGGTGTGATGGATGGCTCTCTGAAGCTAGTGACCCCGAGGGGGCACCAGCTCCCG
 GCTTCGCACCCCTGAGATCCCCATGACAGAAGCGGTTCGAGGCTGTGGCAATGGTTGGAGATCGACTCCAG
 GCCTTCTGGAAGCACGGAGTTCAGGTGTGGGCTCCAGACTCGGAACAGCCGCTGCAGGAGCTGAGAGATC
 CCACCCTCACCTTCCGTCTGCTCTGCTCCCGAGGCTGTAGTGGTGAACACGGCCACGGATGACCC
 TACCGCCCCAGCAACCTCTACATCCAGGAA

ACGCGTACGCGGCCGCTCGAGCAGAACTCATCTCAGAAGAGGATCTGGCAGCAATGATATCCTGGATT
 ACAAGGATGACGACGATAAGGTTTAA

Protein Sequence: >RR202009 representing NM_001106243
Red=Cloning site Green=Tags(s)

MALVDPDIFNKDPREHYDLLQRLGGGTYGEVFKARDKVSVDLVALKMKMEPDDDDVSTLQKEILMLKSCR
HANIVAYHGSYLWLQKLWICMEFCGAGSLQDIYQVTGSLSELQISYVCREVLQGLAYLHSQKKIHRDIKG
ANILINDSGEVKLADFGISAQIGATLARRLSFIGTPYWMAPEVAVALKGGYNELCDIWSLGITAIELAE
LQPPFLFDVHPLRVLFMTKSGYQPPRLKEKGKSSSFHNFVKVTLTKNSKKRPSATKMLSHQLVSPGLN
RGLILDLLDKMKNPGKGLPVEIEDEEPEPPPAIPRRIRSTYRASSLGIPDADCCRRHMEFQRPRCVCERS
QADTVLLQPSADFRSTSPRSQLSDSDDDYDDVDIPAPSENLPPLPPKPKIRSPSDDGSGGVRDDGQLSP
GVLVRCASGPPPRIPRPGPPPATRSPHLTARSDPSLWNPAAPEPGQPPLPPRKEKMRKKMENEKRREEY
TLLVKLFNGCPLQIHSTAATHPSTKDQHLLLGAEEGIFILNRNDQEATLEMIFFPGRTTWLYCINNLLMS
LSGKTPHLYSHSILGLLERKEVRTGSPIAHISPHRFLARKNMVSSKIQDTKGCRAACVAEGASSGGPFLC
GALETSVLLQWYQPMNKFLLVRQVLFPLPTLPVFALLTTPGSELPVAVCIGVSPGQAASVLFHTVRFG
ALSCWLDSSSTEHKGPVQVIQVKEDMVMVMDGSLKLVTEGAPAPGLRTPPEIPMTEAVEAVAMVGDRLQ
AFWKHGVQVWAPDSEQLQELRDPTLTFRLLCSPRPVVVETRPTDDPTAPSNLYIQE

TRTRPLEQKLISEEDLAANDILDYKDDDDKV

Restriction Sites: Sgfl-MluI

Cloning Scheme:


ACCN: NM_001106243

ORF Size: 2481 bp

OTI Disclaimer: The molecular sequence of this clone aligns with the gene accession number as a point of reference only. However, individual transcript sequences of the same gene can differ through naturally occurring variations (e.g. polymorphisms), each with its own valid existence. This clone is substantially in agreement with the reference, but a complete review of all prevailing variants is recommended prior to use. [More info](#)

OTI Annotation: This clone was engineered to express the complete ORF with an expression tag. Expression varies depending on the nature of the gene.

Components: The ORF clone is ion-exchange column purified and shipped in a 2D barcoded Matrix tube containing 10ug of transfection-ready, dried plasmid DNA (reconstitute with 100 ul of water).

- Reconstitution Method:**
1. Centrifuge at 5,000xg for 5min.
 2. Carefully open the tube and add 100ul of sterile water to dissolve the DNA.
 3. Close the tube and incubate for 10 minutes at room temperature.
 4. Briefly vortex the tube and then do a quick spin (less than 5000xg) to concentrate the liquid at the bottom.
 5. Store the suspended plasmid at -20°C. The DNA is stable for at least one year from date of shipping when stored at -20°C.

RefSeq: [NM_001106243.1](#), [NP_001099713.1](#)

RefSeq Size: 2699 bp

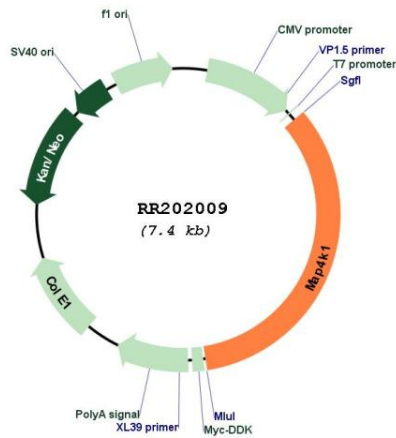
RefSeq ORF: 2484 bp

Locus ID: 292763

Cytogenetics: 1q21

MW: 91.6 kDa

Product images:



Circular map for RR202009