

## Product datasheet for **RR201996**

### Serping1 (NM\_199093) Rat Tagged ORF Clone

#### Product data:

Product Type:	Expression Plasmids
Product Name:	Serping1 (NM_199093) Rat Tagged ORF Clone
Tag:	Myc-DDK
Symbol:	Serping1
Synonyms:	MGC72585
Mammalian Cell Selection:	Neomycin
Vector:	pCMV6-Entry (PS100001)
E. coli Selection:	Kanamycin (25 ug/mL)



[View online »](#)

**ORF Nucleotide Sequence:**

>RR201996 representing NM\_199093  
 Red=Cloning site Blue=ORF Green=Tags(s)

TTTTGTAATACGACTCACTATAGGGCGGCCGGAATTCGTCGACTGGATCCGGTACCGAGGAGATCTGCC  
 GCC**CGGATCGCC**

ATGGCCTCCAAGCTGACCCCACTGACCCTCCTCCTGCTGCTAGCTGGGGATAGAGCCTTCTCAGATT  
 CTGAAGTGACCAGCCACAGCTCCAGGATCCACTAGTAGTTCAAGAGGGAAGCAGGGACAGCGTTCTCTGA  
 AAGAGATGGCTCCCGGAGTCCCATTGAGCACACAGGACAGTCTTCTACCTGGCCAACAACAGTGGATCC  
 ACCAAAATATCAAATGACACCATGGATCAAGTAGCCAACGAGTCTTCCAGCATGTCCAACAGCTG  
 CTCAGCTACCTGAGGATTCTCCAGCCAGTCTCCCGTGAATTCTCCAGCCCGCCCTCCACAGCCTCAGC  
 CCCTCCCACCCAGGCTCCGACTGAGCCCTCTGCCAGAGCCACTTGCTTGGTGTCTGATTGAGACAGA  
 GACTCCTCAGAGGCTACGTTGTCGGAGGCTTTGACAGATTTCTCTGTGAAACTCTACCACGCCTTCTCGG  
 CTACGAAGAAGGCTGAGACCAACATGGCCTTTTCCCATTGAGCATTGCTAGCCTCCTCAGCAGGTCTCT  
 TCTTGGGGCTGGAGACAGCACCAGCAACTGGAGGACATCCTTCTACCCCAAGGATTTTGCCTGT  
 GTCCACCAGACACTAAAGGCTTTTTATCCAAAGGTGTCACCTTCTGTGTCTCAGATTTTCCACAGCCAG  
 ATCTAGCCATACGGGACACCTATGTGAACGCCTCTCTGAGCCTGTATGGAAGCAGCCCAGAGTCTGGG  
 TCCAGACGGTGATGCTAACTTAAAACCTCAACACCTGGGTGGCGGAGAACCAACCAACAAGTCAAT  
 GAGCTGTGGACAGCCTGCCCTCTGACACCCGCCTCGTCTTCTCAATGCCGTCTACTTGAGTGCCAAGT  
 GGAAGAAAACCTTTGAGCAAAAGAAGATGATGGCATCTTCTCTACAAAACTCTATGATTAAGTGCC  
 CATGTTGAGTAGCAAAAAGTACCCTCTGGCCCTTTTCAATGACCAGACTTTGAAGCCAAGTGGGACAG  
 CTGCAGCTCTCTACAACCTGAGCTTTGTGATCATGGTACCCAGAGCCGACACACCAACTTGAAGACA  
 TGGAAAAGGCACCAACCCCACTGTCTTTAAGGCCATCCTGAAGAAGCTAGAGCTGCCAAGTTTCAGCC  
 CACTTACGTGATGATGCCTCGCATTAAAGTAAAGAGCAGCCAAGACATGCTGTCAATCATGGAGAAACTG  
 GAATTCCTTGACTTCACTTACGATCTCAACCTGTGTGGGCTGACTGAGGACCCAGATCTTCAAGTGTCTT  
 CCATGAAACACGAGACGGTGTGGAACTGACAGAGACAGGTGTGGAAGCAGCCGACGCTCCACCATCTC  
 CGTGGCCCGAACTTACTCATCTTTGAGGTGCAGCAGCCTTCTCTCTGCTCTGGGACCAGCGACAC  
 AAGTCCAGTCTTATGGGCCGTATATGACCCAGGGCC

**ACGCGT**ACGCGGCCGCTCGAGCAGAAACTCATCTCAGAAGAGGATCTGGCAGCAAATGATATCTGGATT  
 ACAAGGATGACGACGATAAGGTTTAA

**Protein Sequence:**

>RR201996 representing NM\_199093  
 Red=Cloning site Green=Tags(s)

MASKLTPLTLLLLLLAGDRAFSDSEVTSRSSQDPLVVQEGSRDSVPERDGRSPHIEHTGQSSTWPTTSGS  
 TKISNDTMDQVANESFIQHVQPAALPEDSPSQSPVNSSPSTASAPPTQAPTEPLCPEPLAWCSDDSDR  
 DSSEATLSEALTDVSVKLYHAFSATKKAETNMAFSPFSIASLLTQVLLGAGDSTKSNLEDILSYPKDFAC  
 VHQTLLKAFSSKGVTSVSQIFHSPDLAIRDTYVNASLSLYGSSPRVLGPDGDANLKLINTWVAENTNHKIN  
 ELLDSLPSDTRLVLLNAVYLSAKWKKTFEQKMMASFLYKNSMIKVPMLSSKKYPLALFNDQTLKAKVGQ  
 LQLSHNLSFVIMVPQSPHQLEDMEKALNPTVFKAILKKLELSKFQPTYVMPRIKVKSSQDMLSIMEKLE  
 EFFDFTYDLNLCGLTEDPDLQVSSMKHETVLELTETGVEAAAASTISVARNLLIFEVQQPFLFLWDQRH  
 KFPVFMGRVYDPRA

**TRTRPLEQKLI**SEEDLAANDILDYKDDDDKV

**Restriction Sites:**

Sgfl-Mlul

**Cloning Scheme:**


**ACCN:** NM\_199093

**ORF Size:** 1512 bp

**OTI Disclaimer:** The molecular sequence of this clone aligns with the gene accession number as a point of reference only. However, individual transcript sequences of the same gene can differ through naturally occurring variations (e.g. polymorphisms), each with its own valid existence. This clone is substantially in agreement with the reference, but a complete review of all prevailing variants is recommended prior to use. [More info](#)

**OTI Annotation:** This clone was engineered to express the complete ORF with an expression tag. Expression varies depending on the nature of the gene.

**Components:** The ORF clone is ion-exchange column purified and shipped in a 2D barcoded Matrix tube containing 10ug of transfection-ready, dried plasmid DNA (reconstitute with 100 ul of water).

- Reconstitution Method:**
1. Centrifuge at 5,000xg for 5min.
  2. Carefully open the tube and add 100ul of sterile water to dissolve the DNA.
  3. Close the tube and incubate for 10 minutes at room temperature.
  4. Briefly vortex the tube and then do a quick spin (less than 5000xg) to concentrate the liquid at the bottom.
  5. Store the suspended plasmid at -20°C. The DNA is stable for at least one year from date of shipping when stored at -20°C.

**RefSeq:** [NM\\_199093.1](#), [NP\\_954524.1](#)

**RefSeq Size:** 1850 bp

**RefSeq ORF:** 1515 bp

**Locus ID:** 295703

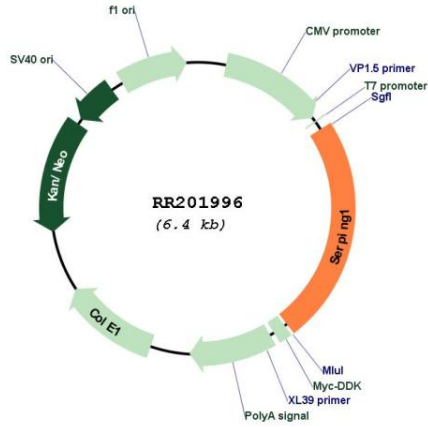
**UniProt ID:** [Q6P734](#)

**Cytogenetics:** 3q24

MW: 55.6 kDa

Gene Summary: human homolog acts as a serine protease inhibitor; involved in regulation of the classical complement pathway [RGD, Feb 2006]

**Product images:**



Circular map for RR201996