

Product datasheet for **RR201982**

Prkaca (NM_001100922) Rat Tagged ORF Clone

Product data:

Product Type: Expression Plasmids
Product Name: Prkaca (NM_001100922) Rat Tagged ORF Clone
Tag: Myc-DDK
Symbol: Prkaca
Synonyms: Cs-PKA; PKCA1
Vector: pCMV6-Entry (PS100001)
E. coli Selection: Kanamycin (25 ug/mL)
Cell Selection: Neomycin
ORF Nucleotide Sequence: >RR201982 representing NM_001100922
Red=Cloning site Blue=ORF Green=Tags(s)

TTTTGTAATACGACTCACTATAGGGCGGCCGGAATTCGTCGACTGGATCCGGTACCGAGGAGATCTGCC
GCC**CGGATCGCC**

ATGGGCAACGCCCGCCGCCAAGAAGGGCAGCGAGCAGGAGAGCGTGAAAGAGTTCCTAGCCAAAGCCA
AGGAAGATTTCTGAAAAATGGGAGACCCCTTCTCAGAATACAGCCAGTTGGATCATTGATAGAAT
CAAGACCTTGGCACCGCTCCTTTGGCGGAGTGATGCTCGTGAAGCACAAAGAAAGTGGGAACCACTAT
GCCATGAAGATCTTGGACAAGCAGAAGGTGGTGAAGCTGAAGCAGATCGAGCACACTCTGAATGAGAAGC
GCATCCTGCAGGCTGTCAACTTCCCGTTCTGGTCAAACCTGAATTCTCCTTCAAGGACAACCTCAAACCT
GTACATGGTCAATGGAGTACGTGCCTGGTGGGGAGATGTTCTCCCACTTACGGCGGATTGGGAGGTTCACT
GAGCCCCACGCCGTTTCTACGCGGCGCAGATCGTCTTGACTTTTGAAGTATCTGCACTCCCTGGACCTCA
TCTACCGGGACCTGAAGCCCGAGAACCTTCTCATCGACCAGCAGGGCTATATTCAGGTGACAGACTTCGG
TTTTGCCAAGCGTGTGAAAGGCCGAACCTGGACCTTGTGTGGGACCCCGAGTACTTGGCCCCGAGATT
ATCCTGAGCAAAGGCTACAACAAAGCTGTGGACTGGTGGGCTCTCGGGTCTCATCTACGAGATGGCTG
CTGGTTACCGCCCTTCTCGCTGACCAGCCTATCCAGATCTATGAGAAAATCGTCTCTGGGAAGGTGCG
GTCCCATCCCACCTTCACTCTGACTTGAAGACCTGCTTCGGAACCTTCTGCAGGTGGATCTCACCAAG
CGCTTTGGGAATCTCAAGAACGGGTCAATGACATCAAGAACCACAAGTGGTTTGGCCAACTGACTGGA
TCGCCATCTATCAGAGAAAGGTGGAAGCTCCCTTCATACCAAAGTTTAAAGGCCCTGGGGACACGAGTAA
CTTTGACGACTATGAGGAGGAAGAGATCCGGGTCTCCATCAATGAGAAATGTGGCAAGGAGTTTACTGAG
TTTTTT

ACGCGTACGCGGCCGCTCGAGCAGAAACTCATCTCAGAAGAGGATCTGGCAGCAAATGATATCCTGGATT
ACAAGGATGACGACGATAAGGTTTAA



[View online »](#)

Protein Sequence: >RR201982 representing NM_001100922
 Red=Cloning site Green=Tags(s)

MGNAAAKKGSEQESVKEFLAKAKEDFLKKWETPSQNTAQLDHFDRIKTLGTGSFGRVMLVKHKESGNHY
 AMKILDKQKVVKLKQIEHTLNEKRILQAVNFPFLVKLEFSFKDNSLYMMEYVPGGEMFSLRRIGRFS
 EPHARFYAAQIVLTFEYLHSLDLIYRDLKPENLLIDQQYIQVTDGFAKRVKGRWTWLCGTPEYLAPEI
 ILSKGYNAVDWWALGVLIYEMAAGYPPFFADQPIQIYEKIVSGKVRFP SHFSSDLKDLLRNLLQVDLTK
 RFGNLKNGVNDIKNHKWFATTDWIAIYQRKVEAPFIPKFKGPGDTSNFDDYEEEEIRVSI NEKCGKEFTE
 FF

TRTRPLEQKLISEEDLAANDILDYKDDDDKV

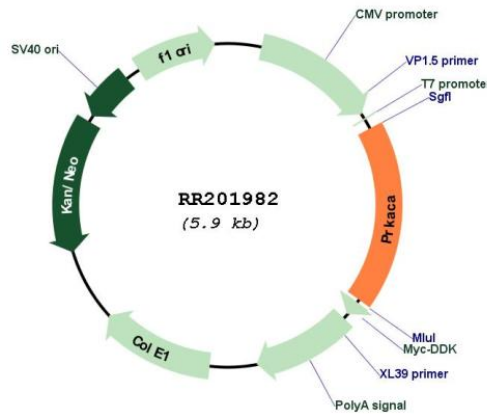
Restriction Sites:

SgfI-MluI

Cloning Scheme:



Plasmid Map:



ACCN: NM_001100922

ORF Size:	1053 bp
OTI Disclaimer:	The molecular sequence of this clone aligns with the gene accession number as a point of reference only. However, individual transcript sequences of the same gene can differ through naturally occurring variations (e.g. polymorphisms), each with its own valid existence. This clone is substantially in agreement with the reference, but a complete review of all prevailing variants is recommended prior to use. More info
OTI Annotation:	This clone was engineered to express the complete ORF with an expression tag. Expression varies depending on the nature of the gene.
Components:	The ORF clone is ion-exchange column purified and shipped in a 2D barcoded Matrix tube containing 10ug of transfection-ready, dried plasmid DNA (reconstitute with 100 ul of water).
Reconstitution Method:	<ol style="list-style-type: none">1. Centrifuge at 5,000xg for 5min.2. Carefully open the tube and add 100ul of sterile water to dissolve the DNA.3. Close the tube and incubate for 10 minutes at room temperature.4. Briefly vortex the tube and then do a quick spin (less than 5000xg) to concentrate the liquid at the bottom.5. Store the suspended plasmid at -20°C. The DNA is stable for at least one year from date of shipping when stored at -20°C.
RefSeq:	NM_001100922.1 , NP_001094392.1
RefSeq Size:	2253 bp
RefSeq ORF:	1056 bp
Locus ID:	25636
Cytogenetics:	19q11
MW:	40.6 kDa
Gene Summary:	active catalytic subunit of protein kinase A; phosphorylates and activates transcription factors in response to elevated levels of cAMP; mediates phosphorylation and regulation of enzyme substrates involved in intermediary metabolism [RGD, Feb 2006]