

## Product datasheet for **RR201973**

### Jph3 (NM\_001107437) Rat Tagged ORF Clone

#### Product data:

Product Type:	Expression Plasmids
Product Name:	Jph3 (NM_001107437) Rat Tagged ORF Clone
Tag:	Myc-DDK
Symbol:	Jph3
Mammalian Cell Selection:	Neomycin
Vector:	pCMV6-Entry (PS100001)
E. coli Selection:	Kanamycin (25 ug/mL)



[View online »](#)

**ORF Nucleotide Sequence:**

>RR201973 representing NM\_001107437  
 Red=Cloning site Blue=ORF Green=Tags(s)

TTTTGTAATACGACTCACTATAGGGCGGCCGGAATTCGTCGACTGGATCCGGTACCGAGGAGATCTGCC  
 GCC**CGCATCGCC**

ATGTCCAGTGGGGTAGGTTTAATTTTACGATGGAGGTCCTACTGCGGAGGCTGGGAGGACGGCAAGG  
 CGCACGGCCATGGCGTCTGCACCGGCCGAAGGGCCAGGGCGAATACACCGGCTCGTGGAGCCACGGCTT  
 TGAGGTGCTGGGCGTCTACACCTGGCCAAGCGGCAACACGTACCAAGGCACCTGGGCGCAGGGCAAGCGC  
 CACGGCATCGGCCTGGAGAGCAAGGGGAAGTGGGTGTACAAGGGCGAGTGGACGCACGGATTTAAGGGGC  
 GCTACGGGGTGGGGAGTGCACGGGCAACGGAGCCAAATACGAAGGGACCTGGAGCAACGGACTGCAGGA  
 TGGCTACGGCACGGAGACCTACTCGGATGGAGGGACGTACCAGGGCCAATGGGTTGGTGGCATGCGCCAG  
 GGCTATGGTGTACGACAGAGTGTCCCTACGGCATGGCTGCGGTATCCGCTCGCCCTGAGGACGTCCA  
 TCAACTCCCTCCGACGCAGCACACGAACGGTGGCGCGTGCACCCGGACGCCTCCCGGCAGTGGCCGG  
 CAGCCCGGCTGTGTCCCGTGGTGGCTTCGTGCTGGTGGCCACAGTGACTCGGAGATCCTGAAGAGCAAG  
 AAGAAGGGACTGTTCCGGCGCTCGCTGTTGAGCGGCCTGAAGCTGCGCAAGTCTGAGTCCAAGAGCAGCC  
 TGCTAGCCAGCGCAGCAAGCAGAGCTCCTCCGACGCGAGGCGGGGATGAGCACCGTGAGTTCCACGGC  
 CAGCGACATCCACTCCACCATCAGCCTGGGTGAGGCCGAGGCTGAGCTGGCTGTCATTGAGGACGACATC  
 GACGCCACCACCTGAGACCTATGTGGGCGAGTGGAAAAACGACAAGCGCTCGGGCTTTGGCGTGAGCC  
 AGCGCTCGGATGGGCTCAAGTATGAGGGTGAAGTGGGTGAGTGGGTGAGTGGGTGAGTGGGTGAGTGGGT  
 CTTCCCGATGGCACCAGGAGGAGGGGAAGTACAAGCAGAACGTGCTCGTGAGCGGCAAGCGCAAGAAC  
 CTCATCCCACTGCGTGCCAGCAAGATCCGGGAGAAGGTGGACCGGGCCGTGGAGGCGAGCCAGAGGGCGG  
 CCACCATCGCCAAGCAGAAAGCCGAGATCGCTGCGTCCAGGACCTCCCACTCAGGGCCAAAGCCGAGGC  
 AGCACTACTGCGGCTCAAAAAGCCAGGAAGAAGCACGGATCGCCAGGATCACTGCCAAAGAGTTCTCG  
 CCTTCTTCCAGCACAGGAAAACGGGCTTGAAGTACCAGAGGCCAAAGCACAGATGTCTGTGATGACA  
 TCGAGGTGCTCTCCACCGGGACACCCCTGCAGCAGGAGAGCCCGAGCTGTACCGCAAGGGCACCACCC  
 TTCTGATCTGACCCCGATGACAGTCCCTGCAAAGCTTTCTGCCAGCCCCACGGCTACCCCTCCGCCA  
 GCTCTGCCTCCAGGAACAAGATGGCCACTTCTCCAGGCAGGTCTCGGTGGATGAGGAGCGAAGCGGGG  
 ACATCCAGATGCTCCTTGAAGGGCCGAGGAGGGGACTATGCCCGCAACAGCTGGGGCGAGGAGAAGGCTGG  
 GGCTCTAGGGGTGTGCGCAGTGGTGCCTACGCAGCGGTGAGCCACTGAGGACTTCCGCACCCGGGGT  
 TCAGGCCACAAGCAGCCTGGGAACCCAAAGCCCGGGAGCGGCGGACGGAGTCCCCACCCAGTTCTCGT  
 GGACTTCACACCACCGGGCAGGCAATCCCTGCTCTGGGGGCCCAAGCTGCTACAGCCCGATGAGGAACA  
 GCTGAGTAACTACAAGCTGGAGATGAAGCCCTTACTAAGGATGGATGCCTGTCCACAGGATACGCACCCA  
 CAGAGACGGCGTCACAGTGGGGTGTGGGGGAGACCGGCGCTCTGAGGACCGGGGCTTCGGGCTACAGA  
 GACTGAGGTCCAAGTCCCAGAACAAAGGAGAACCTCAGGCCGGCTCCTCTGCAGAACCCAGGTGCAGAA  
 ACTAGAGAGCCTGAGGCTGGGGGACCGGCCGAGCCCGTCTGCTGCGTTGGGACCTGACCTTCTCCCA  
 CCCCAGAACTCCTGCTGTGCACTAGAGTCTGACGAGGAGACTGGGGATGAGCTCAAGTCCAGCACGG  
 GCTCAGTCCCCTTGGTGTGATGGTATCCTGCTCAACATTGGAGTCGCCATTTTGTATTAACTT  
 TTTTCATCTTTCATC

**ACGCGT**ACGCGGGCGCTCGAGCAGAACTCATCTCAGAAGAGGATCTGGCAGCAAATGATATCCTGGATT  
 ACAAGGATGACGACGATAAGGTTTAA

**Protein Sequence:** >RR201973 representing NM\_001107437  
 Red=Cloning site Green=Tags(s)

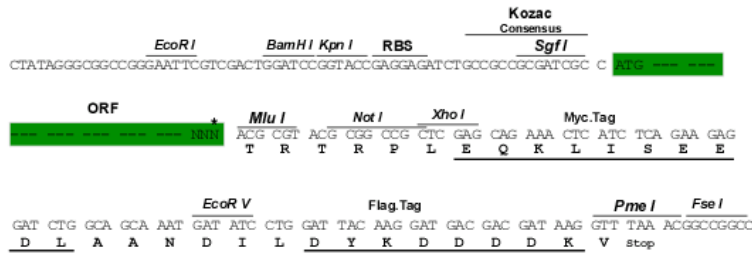
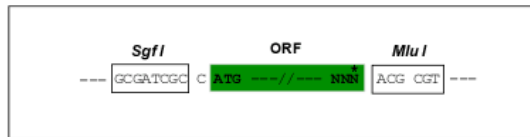
```
MSSGGRFNFDDGGSYCGGWEDGKAHGHGCTGPKGQGEYTGWSHGFVFLGVYTWPSGNTYQGTWAQGKR
HGIGLESKKGWVYKGEWTHGFKGRYGVRECTGNGAKYEGTWSNGLQDGYGTETYSDDGTYQGQWVGGMRQ
GYGVRQSVYPYGMAAVIRSPLRTSINSLRSEHTNGAALHPDASPAVAGSPAVSRGGFVFLVAHSDSEILKSK
KKGLFRRSLLSGLKLRKSEKSSLASQRSKQSSFRSEAGMSTVSSTASDIHSTISLGEAEELAVIEDDI
DATTTEYVYGEWKNDKRSQSGFGVSDGLKYEGEWVSNRRRHGYGCMTPFDGKTEEKGKYQNVLVSGKRKN
LIPLRASKIREKVDRAVEAAERAATIAKQKAEIAASRTSHSRAKAEAAALAAQKAQEEARARITAKEFS
PSFQHRENGLEYQRPKHQMSCDDIEVLSTGTPLQQESPELYRGTTPSDLTPDSSPLQSFAPSPATATPPP
APASRNKMAHFSRQVSVDEERSGDIQMLLEGRGGDYARNSWGEEKAGASRGVRSALRSGOPTEDFRTRG
SGHKQPGNPKPRERRTESPTTFSWTSHHRAGNPCSGGPKLLQPDEEQLSNYKLEMKPLLRMDACPQDTHP
QRRRHSRAGGDRRSEDGRGFLQRLRSKSQNKENLRPASSAEPYQKLESLRLGDRPEPRLLRWDLTFSP
PQKSLPVALESDEETGDELKSSSTGSAPILVVMVILLNIGVAILFINFFIFH
```

TRTRPLEQKLISEEDLAANDILDYKDDDDKV

**Restriction Sites:** SgfI-MluI

**Cloning Scheme:**

Cloning sites used for ORF Shuttling:



\* The last codon before the Stop codon of the ORF

**ACCN:** NM\_001107437

**ORF Size:** 2247 bp

**OTI Disclaimer:** The molecular sequence of this clone aligns with the gene accession number as a point of reference only. However, individual transcript sequences of the same gene can differ through naturally occurring variations (e.g. polymorphisms), each with its own valid existence. This clone is substantially in agreement with the reference, but a complete review of all prevailing variants is recommended prior to use. [More info](#)

**OTI Annotation:** This clone was engineered to express the complete ORF with an expression tag. Expression varies depending on the nature of the gene.

**Components:** The ORF clone is ion-exchange column purified and shipped in a 2D barcoded Matrix tube containing 10ug of transfection-ready, dried plasmid DNA (reconstitute with 100 ul of water).

**Reconstitution Method:**

1. Centrifuge at 5,000xg for 5min.
2. Carefully open the tube and add 100ul of sterile water to dissolve the DNA.
3. Close the tube and incubate for 10 minutes at room temperature.
4. Briefly vortex the tube and then do a quick spin (less than 5000xg) to concentrate the liquid at the bottom.
5. Store the suspended plasmid at -20°C. The DNA is stable for at least one year from date of shipping when stored at -20°C.

**RefSeq:** [NM\\_001107437.1](#), [NP\\_001100907.1](#)

**RefSeq Size:** 3606 bp

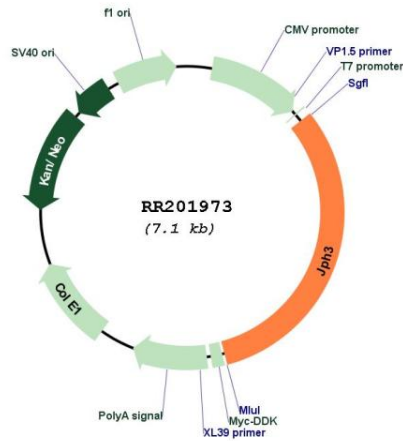
**RefSeq ORF:** 2250 bp

**Locus ID:** 307916

**Cytogenetics:** 19q12

**MW:** 81.9 kDa

**Product images:**



Circular map for RR201973