

Product datasheet for **RR201972**

Hsbp111 (NM_001136183) Rat Tagged ORF Clone

Product data:

Product Type: Expression Plasmids
Product Name: Hsbp111 (NM_001136183) Rat Tagged ORF Clone
Tag: Myc-DDK
Symbol: Hsbp111
Synonyms: Hsbp111
Vector: pCMV6-Entry (PS100001)
E. coli Selection: Kanamycin (25 ug/mL)
Cell Selection: Neomycin
ORF Nucleotide Sequence: >RR201972 representing NM_001136183
Red=Cloning site Blue=ORF Green=Tags(s)

TTTTGTAATACGACTCACTATAGGGCGCCGGAATTCGTCGACTGGATCCGGTACCGAGGAGATCTGCC
GCC**CGGATCGCC**

ATGGACGCCCGGACGCCGAAGTCCCTGTGGGACTTGCTGCAGAACCGGCCGAGAACCTACTTCAGG
AGGTTGAAGAACATTTCCAAGCTCTGACTGCAACATTAACCTCAGAATGGAAGAAATGGGAAATCGCAT
CGAGGACTTACAGAGAAATGTGGATGACCTAATGGCTCAAGCTGGGATCGAAAATTCTATTAAGAAGCA
ACGACC

ACGCGTACGCGGCCGCTCGAGCAGAACTCATCTCAGAAGAGGATCTGGCAGCAAATGATATCCTGGATT
ACAAGGATGACGACGATAAGGTTTAA

Protein Sequence: >RR201972 representing NM_001136183
Red=Cloning site Green=Tags(s)

MDARTPEVPCGDLLQNAENLLQEVEEHFQALTATLNLMEEMGNRIEDLQRNVDDLMAQAGIENSIKEA
TT

TRTRPLEQKLISEEDLAANDILDYKDDDDKV

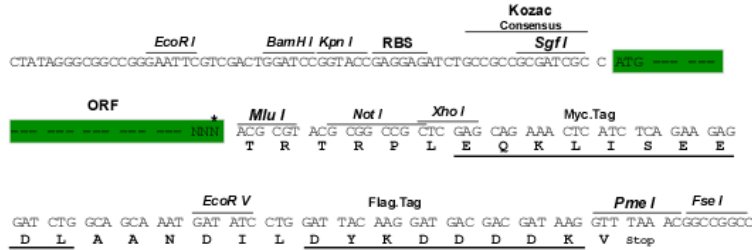
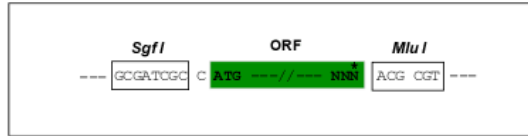
Restriction Sites: Sgfl-MluI



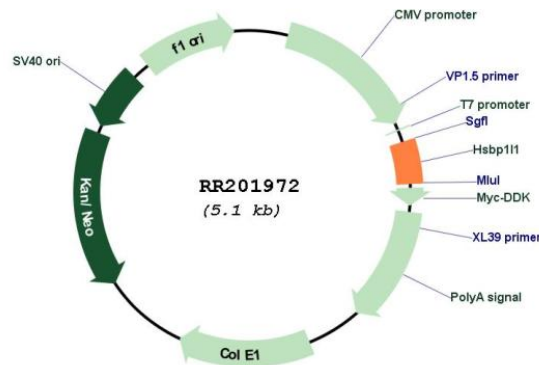
[View online »](#)

Cloning Scheme:

Cloning sites used for ORF Shutting:



* The last codon before the Stop codon of the ORF

Plasmid Map:

ACCN: NM_001136183

ORF Size: 216 bp

OTI Disclaimer: The molecular sequence of this clone aligns with the gene accession number as a point of reference only. However, individual transcript sequences of the same gene can differ through naturally occurring variations (e.g. polymorphisms), each with its own valid existence. This clone is substantially in agreement with the reference, but a complete review of all prevailing variants is recommended prior to use. [More info](#)

OTI Annotation:	This clone was engineered to express the complete ORF with an expression tag. Expression varies depending on the nature of the gene.
Components:	The ORF clone is ion-exchange column purified and shipped in a 2D barcoded Matrix tube containing 10ug of transfection-ready, dried plasmid DNA (reconstitute with 100 ul of water).
Reconstitution Method:	<ol style="list-style-type: none">1. Centrifuge at 5,000xg for 5min.2. Carefully open the tube and add 100ul of sterile water to dissolve the DNA.3. Close the tube and incubate for 10 minutes at room temperature.4. Briefly vortex the tube and then do a quick spin (less than 5000xg) to concentrate the liquid at the bottom.5. Store the suspended plasmid at -20°C. The DNA is stable for at least one year from date of shipping when stored at -20°C.
RefSeq:	<u>NM_001136183.1</u> , <u>NP_001129655.1</u>
RefSeq Size:	398 bp
RefSeq ORF:	219 bp
Locus ID:	100192205
UniProt ID:	<u>D4A9E1</u>
Cytogenetics:	18q12.3
MW:	8.1 kDa