

Product datasheet for **RR201942**

Dnmt3b (NM_001003959) Rat Tagged ORF Clone

Product data:

Product Type:	Expression Plasmids
Product Name:	Dnmt3b (NM_001003959) Rat Tagged ORF Clone
Tag:	Myc-DDK
Symbol:	Dnmt3b
Vector:	pCMV6-Entry (PS100001)
E. coli Selection:	Kanamycin (25 ug/mL)
Cell Selection:	Neomycin



[View online »](#)

ORF Nucleotide
Sequence:

>RR201942 representing NM_001003959
Red=Cloning site Blue=ORF Green=Tags(s)

TTTTGTAATACGACTCACTATAGGGCGGCCGGAATTCGTCGACTGGATCCGGTACCGAGGAGATCTGCC
GCC**CGCATCGCC**

ATGAAGGGAGACAGCAGACATCTTAATGAAGAAGAGGGTCTAGTGGGTATGAGGACTGTATCATTGTTA
ATGGGAACTGTAGTGACCAGTCCCTCGGACACGAAGGATGCTCCCTCACCCCAAGTCTTGAGGCAATCTG
CACAGAGCCAGTCTGTACACCAGAGACAGAGGCCGAGATCAAGCTCACGGCTGTCTAAGAGGGAGGTC
TCCAGCCTTCTGAATTACACGCAGGACGTGGTAGGAGATGGAGATGGTGAAGCGGATGATGGAGATGGCT
CTGATATTCTCATGATGCCAAAGCTCACCCGAGAGACCAAGGATGCCAGGACTCCCTCTGAAAGCCAGC
CGTCCGAACCCGAAACAGCAACAGTATCTCCAGCCTGGAGAGGCAAGAAGCTCCCCAGAATCACGCGA
GGCCGGCAGGGCCGCTACCACGTTACAGGAGTACCCCGTGGAGTTCACAGCTACCAAGTCTCGAGGGCCG
GAGCATCGTCTTACGAAGCACGCCATGGTCATCCCTGCCAGCATCGAGCTCATGGAAGATGTGACACC
TAAGAGCAGCAGTACGCCATCGGTTGACTTGAGCCAGGACGGCCCTCAGGAGGGCATGGATGCCACACAG
GTGGATGCGGAGAGCAGGGATGGTGACAGCACTGAGTATCAGGATGACAAGGAGTTTGAATAGGTGACC
TTGTGTGGGAAAAGATCAAGGGCTTCTCCTGGTGGCTGCCATGGTGGTGTCTGAAAGCCACCTCCAA
GCGCCAGGCCATGCCCGAATGCGCTGGGTACAGTGGTTTGGCGATGGCAAGTTTTCTGAGATCGCTGCT
GACAAGCTGGTGGCTCTGGGTCTGTTACGCCAGCACTTAATCTGGCCACCTTCAATAAGCTGGTTTCTT
ATAGGAAGGCCATGTACCACACTCTGGAGAAAGCCATGGTGGAGCTGGCAAGACCTTCCCAGCCGCCCC
TGGAGACTCACTGGAGGACCAGCTGAAGCCATGCTGGAGTGGGCCACGGGGCTTCAAGCCACTGGG
ATCGAGGGCCTCAAACCAACAAGCAACCAGAGGTTACATAAGTGAAGGTGCGTCTGTCAGGCAGTA
GGAACCTAGAAGCCAGGAGACGCGAGACAAGTCAAGACGCACAACCATTGACTTTGCCCTTCTGA
GTACTCCACACCCCTAAGCGCCTCAAGACAAATAGCTATGGTGGGAAGGACCGAGGGGAAGATGAGGAG
AGCCGAGAACGGATGGCTTCTGATGTACTAACAACAAGGCAATCTGGAAGACCCTGTCTGCTCTGCG
GTAAGAAGAACCCTGTGCTCTTCCACCCCTCTTTGAGGGTGGGCTCTGTGAGAGTTGCCGGATCGCTT
CCTGGAGCTCTTCTACATGTACGATGAGGACGGCTATCAGTCTACTGCACCGTGTGCTGTGAGGGCCGT
GAACTGCTTCTGTGAGTAACACAAGCTGCTGCAGGTGCTTCTGTGTGGAGTGTCTGGAGGTGCTGGTGG
GTACAGGCACAGCGGAGGATGCCAAGCTGCAGGAACCCTGGAGCTGCTATATGTGCTCCCGCAGCGCTG
CCATGGGGTCTGCGGCGCAGGAAGGACTGGAACATGCGCCTGCAAGACTTCTTCACTACTGATCCTGAC
CTGGAAGAGTTTGAAGCCCAAGTTGTACCCAGCGATTCTGCAAGCAAAAGGAGGCCATTAGGGTCC
TGTCCCTGTTGATGGAATTGCAACAGGGTACTTGGTGTCAAGGACTTGGGTATTAAGTGGAGAAGTA
CGTTGCCCTCTGAAGTCTGTGAGAGTCCATTGCTGTAGGAACCATTAAGCATGAAGGCCAAATCAATAT
GTCAATGACGTCCGAAAATCACCAAGAAAAATATTGAAGAGTGGGGCCATTTGACTTGGTGATTGGCG
GAAGCCCATGCAATGATCTTTCTAATGTCAATCCTGCCAGGAAAGGCCTGTATGAGGGCACAGGAAGGCT
CTTCTTTGAGTTTTACCCTTGTGAAATATACACGCCCAAGGAGGGCGACAACCGTCCATTCTTCTGG
ATGTTTCGAGAATGTTGTGGCCATGAAAGTGAATGACAAGAAAGACATCTCCCGATTCTGGCATGTAACC
CAGTGATGATCGACGCCATCAAGGTTTCTGCTGCTCACAGGGCCCGTACTTCTGGGGTAATCTACCTGG
AATGAACAGGCCTGTGATAGCTTCAAAGAATGATAAGCTCGAGCTACAAGACTGCTTGGAGTTCAGTAGG
ACAGCAAAGTTAAAGAAAAGTACAGACAATAACCACCAAGTCAAGTCCATCAGACAGGGGAAAAACCAGC
TTTTCCCTGTAGTCATGAATGGCAAGGATGACGTTCTGTGGTGCAGTCTGAGCTCGAAAGGATCTTCGGTT
CCCAGCTCACTACACAGACGTGTCCAACATGGCCGGGGCCCGCCAGAAAGTACTGGGAAGTCTCTGG
AGTGTGCCAGTCATCAGACACCTGTTTGGCCCTTGAAGGACTACTTGCATGTGAAAGTGTGCCAGTCA
TCAGACACCTGTTTGGCCCTTGAAGGACTACTTGCATGTGAA

ACGCGTACGCGGCCGCTCGAGCAGAAACTCATCTCAGAAGAGGATCTGGCAGCAATGATATCCTGGATT
ACAAGGATGACGACGATAAGGTTTAA

Protein Sequence: >RR201942 representing NM_001003959
Red=Cloning site Green=Tags(s)

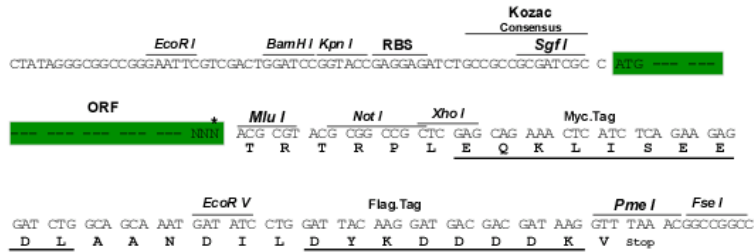
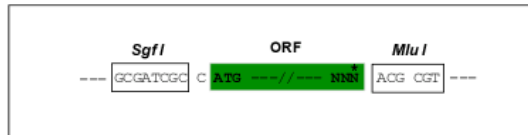
MKGDSRHLNEEEGASGYEDCIIVNGNCSDQSSDTKDAPSPVLEAICTEPVCTPETRGRSSSRLSKREV
SSLLNYTQDVVGDGGEADDGDGSDILMMPKL TRETkdARTPSESPAVRTRNSNSISSLERQRTSPRITR
GRQGRYHVQEYPVEFPATKSRRRRASSASTPWSSPASIEMEDVTPKSSSTPSVDLSQDGPQEGMDATQ
VDAESRDGDSTEYQDDKEFGIGDLVWGKIKGFSWWPAMVVSWKATSKRQAMPGMRWVQWFGDGKFSEIAA
DKLVALGLFSQHFNLATFNKLVSYRKAMYHTLEKAMVRAGKTFPSRPGDSLEDQLKPMLEWAHGGFKPTG
IEGLKPNKQPEVHKSKVRRSGSRNLEARRRENKSRRTTIDFAASEYSTPPKRLKTNISYGGKDRGEDEE
SRERMASDVTNNKGNLEDRCLSCGKNPVSFHPLFEGGLCQSCRDRFLELFMYDEDEGYQSYCTVCCEGR
ELLCSNTSCRCFCVECLEVLVGTGTAEDAKLQEPWSCYMCLPQRCHGVLRRRKDWNMRLQDFFTTDPD
LEEFEPKLYPAIPAARRRPIRVLSLFDGIATGYLVKDLGIKVEKYVASEVCAESIAVGTIKHEGQIKY
VNDVRKITKKNIEEWGPFDLVIGGSPCNDLSNVNPARKGLYEGTGRLFFEFYHLLNYTRPKEGDNRPFFW
MFENVVAMKVNDKDISRFLACNPVMIDAIKVSAAHRARYFWGNLPGMNRPVIASKNDKLELQDCLEFSR
TAKLKKVQTITTKSNSIRQGNQLFPVVMNGKDDVLWCTELERIFGFPAHYTDVSNMGRGARQKLLGRSW
SVPVIRHLFAPLKDYFACESVPVIRHLFAPLKDYFACE

TRTRPLEQKLISEEDLAANDILDYKDDDDKV

Restriction Sites: Sgfl-MluI

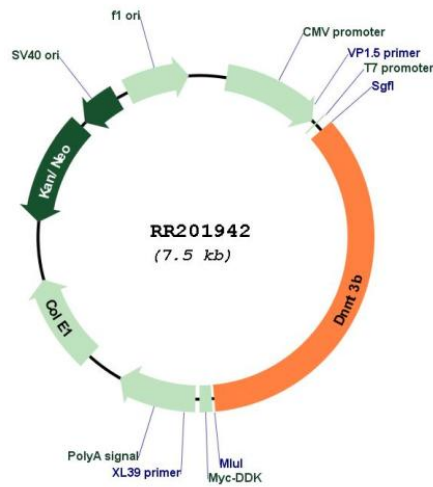
Cloning Scheme:

Cloning sites used for ORF Shutting:



* The last codon before the Stop codon of the ORF

Plasmid Map:



ACCN:	NM_001003959
ORF Size:	2577 bp
OTI Disclaimer:	The molecular sequence of this clone aligns with the gene accession number as a point of reference only. However, individual transcript sequences of the same gene can differ through naturally occurring variations (e.g. polymorphisms), each with its own valid existence. This clone is substantially in agreement with the reference, but a complete review of all prevailing variants is recommended prior to use. More info
OTI Annotation:	This clone was engineered to express the complete ORF with an expression tag. Expression varies depending on the nature of the gene.
Components:	The ORF clone is ion-exchange column purified and shipped in a 2D barcoded Matrix tube containing 10ug of transfection-ready, dried plasmid DNA (reconstitute with 100 ul of water).
Reconstitution Method:	<ol style="list-style-type: none">1. Centrifuge at 5,000xg for 5min.2. Carefully open the tube and add 100ul of sterile water to dissolve the DNA.3. Close the tube and incubate for 10 minutes at room temperature.4. Briefly vortex the tube and then do a quick spin (less than 5000xg) to concentrate the liquid at the bottom.5. Store the suspended plasmid at -20°C. The DNA is stable for at least one year from date of shipping when stored at -20°C.
RefSeq Size:	4289 bp
RefSeq ORF:	2580 bp
Locus ID:	444985
Cytogenetics:	3q41
MW:	97 kDa