

Product datasheet for **RR201921**

Slco1a1 (NM_017111) Rat Tagged ORF Clone

Product data:

Product Type:	Expression Plasmids
Product Name:	Slco1a1 (NM_017111) Rat Tagged ORF Clone
Tag:	Myc-DDK
Symbol:	Slco1a1
Synonyms:	OATP-1; Oatp1; Slc21a1; Slc21a3
Mammalian Cell Selection:	Neomycin
Vector:	pCMV6-Entry (PS100001)
E. coli Selection:	Kanamycin (25 ug/mL)



[View online »](#)

ORF Nucleotide Sequence:

>RR201921 representing NM_017111
 Red=Cloning site Blue=ORF Green=Tags(s)

TTTTGTAATACGACTCACTATAGGGCGGCCGGGAATTCGTCGACTGGATCCGGTACCGAGGAGATCTGCC
 GCC**GCGATCGCC**

ATGGAAGAAACAGAGAAAAAGATTGCAACACAAGAGGGTAGATTGTTTTCCAAGATGAAGGTGTTTCTGC
 TGCATTAACATGTGCATGTTTAAACAAATCACTATCAGGAGTATATATGAATTCATGCTCACACAAAT
 AGAGAGACAATTTGATATCTCCACATCTGTAGCTGGATTAATCAATGGGAGCTTTGAGATTGAAAACCTT
 TTTTTCATTGTATTTGTGAGTTATTTTGGAAACAAAAGTGCACAGACCTGTGGTATTGGTATTGGATGTG
 TGATTATGGGCCTGGGGTGTCTCTTAATGTCAATACCTCATTCTTTCATGGGCAGATACGAATATGAAAC
 AACGATCTCACCTACAGGCAACTGTCTCAAACAGCTTCTTGTGTATGGAGAACCGAACACAGACCTTA
 AAGCCAACGCAAGACCCAGCAGAATGTGTGAAAGAAATGAAATCATTAAATGTGGATATGTGAATGGTAG
 GAAATATTATACGTGGAATTTGGTAAACCTCTATTGTGCCCTGGGTATCTCTTACATCGAAGACTTTGC
 CAAATCAGAAAACCTCCTTTATACATTGGGATTTTAGAAATGGGGAAGGTTGCTGGCCCAATTTTGGGA
 CTTTTGTTGGGATCTTACTGTGCACAAATTTATGTAGACATTGGGTCTGTGAATACAGATGACCTGACCA
 TAACACCCAGTGATACACGCTGGGTTGGTCTTGGTGGATTGGCTTTTTGGTCTGTGCAGGAGTGAATAT
 CCTGACCAGCATCCCCTTTTTCTTTTTGCCGAAAGCACTTCCAAAGAAAGGACAACAGGAGAATGTTGCT
 GTGACTAAAGATGGCAAAGTTGAGAAAATATGGAGGACAAGCCAGAGAGGAAAAATCTTGAATCACTAAAG
 ATTTCTTGACGTTTCATGAAGAGGCTCTTCTGCAATCCGATTTACATGCTTTTCATCCTTACAAGTGTGCT
 CCAGGTGAATGGCTTTATTAATAAATTTACGTTCTTGGCCAAATACCTGGAACAGCAGTATGGAAAATCT
 ACTGCAGAGGCAATATTCCTCATAGGTGTTTATAGCTTACCTCCCATATGCCTCGGGTATCTAATTGGTG
 GCTTTATTATGAAGAAGTTTAAGATTACTGTCAAGAAAGCTGCATACCTAGCATTGCTATCGGTGTT
 TGAATATCTTCTTTTTCTTTGTCACCTTTATGTTGACCTGTGACAATGCAGCAGTTGCTGGATTAACCACC
 TCTTACAAGGAGTTCAGCACCAACTACATGTGGAGAGCAAGGTCCTTGCTGACTGCAACACAAGGTGTA
 GCTGCTCAACGAACACATGGGATCCAGTGTGTGGAGACAATGGTGTAGCATACATGTCAGCTTGCCTTGC
 GGGCTGTAAGAAGTTTGTGGAACTGGAACCAACATGGTGTTCAGGATTGCAGCTGCATTACAGTCATTA
 GGAAACTCGTCTGCAGTCTGGTCTGTGTAAGAAAGGTCCTGAGTGTGCCAACAGGCTGCAGTACTTTT
 TAATCTTAACAATAATTATCAGTTTCATCTACTCACTTACAGCCATACCTGGGTACATGGTTTTTTTGGAG
 GTGTGTCAAGTCTGAAGAGAAGTCACTTGGAGTTGGATTACATACATTTTGCATAAGAGTATTTGCTGGT
 ATTCGCCACCTGTTTACTTTGGCGCTTTGATAGACAGAACCTGTTTACATTGGGGAACCTGAAATGTG
 GTCAGCGAGGGGCATGCAGGATGTATGACATAAACAGTTTCAGGCACATTTACCTGGGGTTGCCTATAGC
 ACTAAGAGGATCAAGCTATCTGCCTGCCTTCTTATTCTGATACTTATGAGGAAATTCAGTTCCCGGGG
 GACATTGACTCTTCAGCAACTGATCATACAGAGATGATGCTCGGAGAGAAGGAAAGCGAGCACACAGATG
 TGCATGGAAGTCTCAGGTCGAGAATGACGGGAACTGAAAACGAAGCTG

ACGCGTACGCGGGCCGCTCGAGCAGAAACTCATCTCAGAAGAGGATCTGGCAGCAATGATATCCTGGATT
 ACAAGGATGACGACGATAAGGTTTAA

Protein Sequence: >RR201921 representing NM_017111
 Red=Cloning site Green=Tags(s)

```
MEETEKKIATQEGRLF SKMKVFLLSLTCACLTKSLSGVYMNMSMLTQIERQFDISTSVAGLINGSFEIGNL
FFIVFVSYFGTKLHRPVVIGIGCVIMGLGCLLMSLPHFFMGRYEYETTISPTGNLSSNSFLCMENRTQL
KPTQDPAECVKEMKSLMWICVMVGNIIIRIGETPIVPLGISYIEDFAKSENSPLYIGILEMGKVAGPIFG
LLLGSYCAQIYVDIGSVNTDDL TITPSDTRWVGAWWIGFLVCAGVNILTSIPFFFLPKALPKKGQQENVA
VTKDGVKEYGGQAREENLGITKDFLTFMKRFLCNPIYMLFILTSVLQVNGFINKFTFLPKYLEQQYQKLS
TAEAIIFLIGVYSLPPICLGYLIGGFIMKKFKITVKKAAYLAFCLSVFEYLLFLCHFMLTCDNAAVAGLTT
SYKGVQHQHLHVESKVLADCNTRCSCSTNTWDPVCGDNGVAYMSACLAGCKKFVGTGTNMVFQDCSCIQSL
GNSSAVLGLCKKGPECANRLQYFLILTIISFIYSLTAIPGYMVFLRCVKSEEKSLGVLHTFCIRVFAG
IPAPVYFALIDRTCLHWGTLKCGQRGACRMYDINSFRHIYLGLPALRGSSYLPAFFILILMRKFQFPG
DIDSSATDHTEMLLGEKESEHTDVHGSPQVENDGELKTKL
```

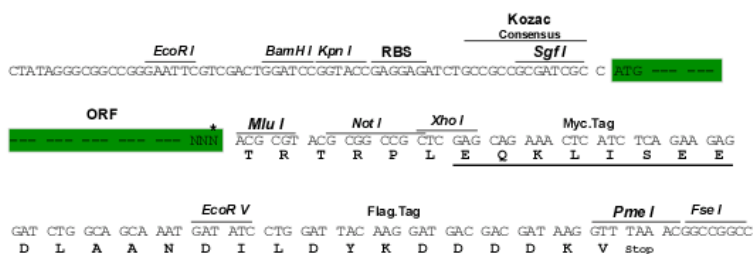
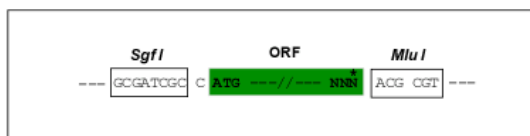
TRTRPLEQKLI SEEDLAANDILDYKDDDDKV

Chromatograms: https://cdn.origene.com/chromatograms/ja1720_e03.zip

Restriction Sites: Sgfl-MluI

Cloning Scheme:

Cloning sites used for ORF Shuttling:



* The last codon before the Stop codon of the ORF

ACCN: NM_017111

ORF Size: 2010 bp

OTI Disclaimer: Due to the inherent nature of this plasmid, standard methods to replicate additional amounts of DNA in E. coli are highly likely to result in mutations and/or rearrangements. Therefore, OriGene does not guarantee the capability to replicate this plasmid DNA. Additional amounts of DNA can be purchased from OriGene with batch-specific, full-sequence verification at a reduced cost. Please contact our customer care team at custsupport@origene.com or by calling 301.340.3188 option 3 for pricing and delivery.

The molecular sequence of this clone aligns with the gene accession number as a point of reference only. However, individual transcript sequences of the same gene can differ through naturally occurring variations (e.g. polymorphisms), each with its own valid existence. This clone is substantially in agreement with the reference, but a complete review of all prevailing variants is recommended prior to use. [More info](#)

OTI Annotation: This clone was engineered to express the complete ORF with an expression tag. Expression varies depending on the nature of the gene.

Components: The ORF clone is ion-exchange column purified and shipped in a 2D barcoded Matrix tube containing 10ug of transfection-ready, dried plasmid DNA (reconstitute with 100 ul of water).

Reconstitution Method:

1. Centrifuge at 5,000xg for 5min.
2. Carefully open the tube and add 100ul of sterile water to dissolve the DNA.
3. Close the tube and incubate for 10 minutes at room temperature.
4. Briefly vortex the tube and then do a quick spin (less than 5000xg) to concentrate the liquid at the bottom.
5. Store the suspended plasmid at -20°C. The DNA is stable for at least one year from date of shipping when stored at -20°C.

RefSeq: [NM_017111.1](#), [NP_058807.1](#)

RefSeq Size: 2758 bp

RefSeq ORF: 2013 bp

Locus ID: 50572

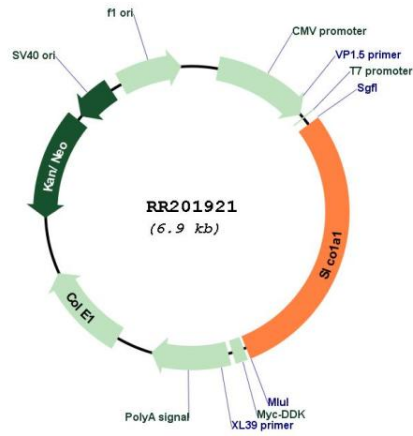
UniProt ID: [P46720](#)

Cytogenetics: 4q44

MW: 74.6 kDa

Gene Summary: mediates the transport of sulfated, amidated bile acid, sulfolithocholytaurine, into rat hepatocytes [RGD, Feb 2006]

Product images:



Circular map for RR201921