

Product datasheet for RR201917

Dmtn (NM_001108385) Rat Tagged ORF Clone

Product data:

Product Type: Expression Plasmids
 Product Name: Dmtn (NM_001108385) Rat Tagged ORF Clone
 Tag: Myc-DDK
 Symbol: Dmtn
 Synonyms: Epb4.9; Epb49
 Vector: pCMV6-Entry (PS100001)
 E. coli Selection: Kanamycin (25 ug/mL)
 Cell Selection: Neomycin
 ORF Nucleotide Sequence: >RR201917 representing NM_001108385
 Red=Cloning site Blue=ORF Green=Tags(s)

TTTTGTAATACGACTCACTATAGGGCGGCCGGAATTCGTCGACTGGATCCGGTACCGAGGAGATCTGCC
 GCCGCGATCGCC

ATGGAACGCTGTCAGAAGCAACCTTTACCTCCCCGGGGAGCGTCAGCTCCTCCAGAGACTCCAGTGTAC
 CCGGCTCTCCCTCAACATCGTGGCCAAGATGGACAACCAGGTGTTGGGCTACAAAGACCTGGCCGCCAT
 CCCAAGGACAAGGCCATCCTGGACATTGAGAGACCTGACCTCATGATCTACGAGCCCCATTTTACCTAT
 TCCTCCTGGAACACGTAGAGCTTCCCAGAAGTCGGGAGTGCTCACTGTCACCCAAATCCACATCCCCAC
 CACCTTCTCCAGAGGTGTGGCGGAGAGCCGGACACTTGAATCATCTCTCAGGCTTCAACACCAAGGAC
 CACAGGAACCCCAAGGACCAGCCTGCCCATTTCCACCACCCTGAGACTACCCGCCCGGATTCCAACATC
 TACAAGAAGCCACCCATCTACAAGCAGAGAGAATCGGTGGGAGGCAGCCCTCAGAGCAAGCACCTCATCG
 AGGACCTCATCATTGAGTCATCCAAGTCCCAGCAGCACAGCCCTGATCCCAACCAGCCAGCCAAGAT
 AGAGACTGACTATTGGCCGTGTCCCCGTCGCTGGCTGTTGTGGAGACAGAATGGAGGAAGCGGAAGGCA
 TCTCGAAAGGGCGCAGAGGAAGAGGAGGAGGAGGAAGATGACTCTGAAGAGGAGATTAAGGCCATCA
 GGGAGCGGCAGAAAGAGGAACCTCAGTAAGGTTACTTCAACTGGGAAAGATGATCTTGAAGAAGAGAT
 GGAAAAGTCATTGCCATCCGGAGGAAAACGCGCTCTCTGCCTGACCCGGACACCCTCCATACCTCCTTG
 CATTCCGGAAACGTCTAAGTCCTCGTCCCTTCTTCTTCTATGGCAGGACCACCCTGAGTCGGCTACAGTCCA
 CAGAATTCAGCCATCCGGAAGTGAGGCTGGGAGCCAGATCTATCCCTACAGAATTCAGCCATCCGGA
 AGTGAGGCTGGGAGCCAGATCTATCCCTA

ACGCGTACGCGGCCGCTCGAGCAGAAACTCATCTCAGAAGAGGATCTGGCAGCAATGATATCCTGGATT
 ACAAGGATGACGACGATAAGGTTTAA



[View online »](#)

Protein Sequence:

>RR201917 representing NM_001108385

Red=Cloning site Green=Tags(s)

MERLQKQPLTSPGSVSSSRDSSVPGSPSNIVAKMDNQVLGYKDAAIPKDKAILDIERPDLMIYEPHFTY
 SLLLEHVELPRSRECSLSPKSTSPPPSPEVWASRTLGIISQASTPRTTGTPRTSLPHFHPETTRPDSNI
 YKKPPIYKQRESVGGSPQSKHLIEDLIIESSKFPAQQPPDPNQPAKIETDYWPCPPSLAVVETWRKKA
 SRKGAEEDDDSEEEIKAIRERQKEELSKVTSNLGKMKILKEEMKSLPIRRKTRSLPDRTPFHTSL
 HSGTSKSSSLPSYGRTTLSRLQSTEFSPSGEAGSPDLSLQNSAHPEVRLGAQIYP

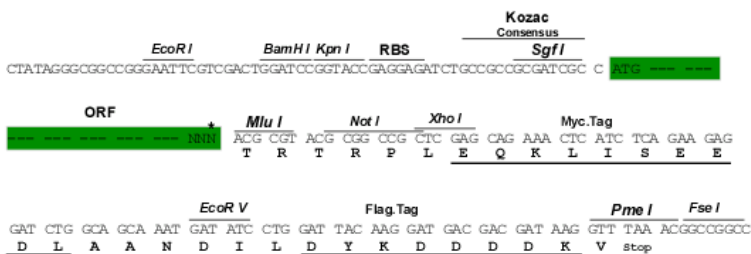
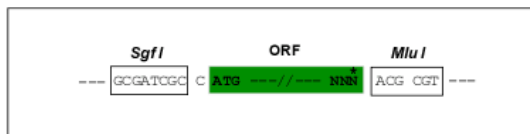
TRTRP**LEQKLISEEDLA****ANDILDYKDDDDK****V**

Restriction Sites:

Sgfl-MluI

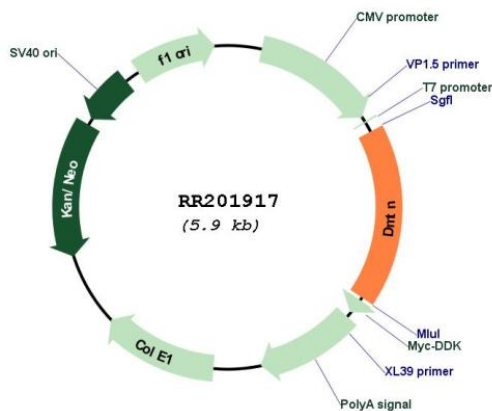
Cloning Scheme:

Cloning sites used for ORF Shutting:



* The last codon before the Stop codon of the ORF

Plasmid Map:



ACCN:

NM_001108385

ORF Size:

960 bp

OTI Disclaimer:	The molecular sequence of this clone aligns with the gene accession number as a point of reference only. However, individual transcript sequences of the same gene can differ through naturally occurring variations (e.g. polymorphisms), each with its own valid existence. This clone is substantially in agreement with the reference, but a complete review of all prevailing variants is recommended prior to use. More info
OTI Annotation:	This clone was engineered to express the complete ORF with an expression tag. Expression varies depending on the nature of the gene.
Components:	The ORF clone is ion-exchange column purified and shipped in a 2D barcoded Matrix tube containing 10ug of transfection-ready, dried plasmid DNA (reconstitute with 100 ul of water).
Reconstitution Method:	<ol style="list-style-type: none">1. Centrifuge at 5,000xg for 5min.2. Carefully open the tube and add 100ul of sterile water to dissolve the DNA.3. Close the tube and incubate for 10 minutes at room temperature.4. Briefly vortex the tube and then do a quick spin (less than 5000xg) to concentrate the liquid at the bottom.5. Store the suspended plasmid at -20°C. The DNA is stable for at least one year from date of shipping when stored at -20°C.
RefSeq Size:	2682 bp
RefSeq ORF:	963 bp
Locus ID:	361069
Cytogenetics:	15p11
MW:	35.7 kDa