

## Product datasheet for **RR201869**

### **Cnga2 (NM\_012928) Rat Tagged ORF Clone**

#### **Product data:**

Product Type:	Expression Plasmids
Product Name:	Cnga2 (NM_012928) Rat Tagged ORF Clone
Tag:	Myc-DDK
Symbol:	Cnga2
Synonyms:	Cncg4; OLFCH
Mammalian Cell Selection:	Neomycin
Vector:	pCMV6-Entry (PS100001)
E. coli Selection:	Kanamycin (25 ug/mL)



[View online »](#)

ORF Nucleotide  
Sequence:

>RR201869 representing NM\_012928  
Red=Cloning site Blue=ORF Green=Tags(s)

TTTTGTAATACGACTCACTATAGGGCGGCCGGAATTCGTCGACTGGATCCGGTACCGAGGAGATCTGCC  
GCCGCGATCGCC

ATGATGACCGAAAAATCCAATGGTGTGAAAAGCTCTCCAGCTAATAACCATAAACCATCATCTCCTCCTT  
CTATCAAGGCCAATGGCAAAGATGACCACAGGGCAGGAAGCAGACCACAGTCTGTGGCAGCTGATGATGA  
CACTTCTCCAGAACTACAAGGCTGGCAGAGATGGATACCCCTCGGAGGGGGAGGGTGGCTTCCAAAGG  
ATTGTTGCCTGGTGGGGTTCATCAGGGACTGGGCCAACAAGAATTTCCGTGAAGAGGAACCAAGGCCTG  
ACTCCTTCTAGAGCGTTTCCGTGGCCAGAATCCAGACTGTGACAACCCATCAGGGGGATGACAAAGG  
CGGCAAGGACGGCAGGGAAAGGCCACCAAAAAGAAATTTGAACTGTTTGTGGACCCAGCCGGAGAC  
TGGTATTACCGTTGGTTGTTGTCATTGCCATGCCTGTTCTTTACAACCTGGTGCCTGTTGGTGGCCAGAG  
CCTGCTCAGTGATCTACAGAGAACTATTTGTGGTATGGCTGGTGGTGGTGGTGGTGGTGGTGGTGGT  
CTATATCGCAGACCTCATATTCGGCTGCGCACAGGCTTCTAGAACAGGGGCTCTTGGTCAAAGATCCC  
AAGAAATTCGAGACAATATATTCACACTTTGCAGTTCAAATGGATGTGGCTTCTATCATTCCCCTG  
ACCTTATCTATTTTGTGTGGTATCCACAGCCCTGAGGTACGCTTCAACCGTCTATTACACTTTGCCCG  
TATGTTTGAGTCTTTGACCGCACTGAGACACGCACCAGTACCCCAACATCTTCCGAATCAGCAATCTG  
GTCCTTACATCTTGGTCATCATCCACTGGAATGCTTGTATTTATTATGTTATTTCTAAGTCCATTGGCT  
TTGAGGTTGACACCTGGGTTTACCCCAACATTACTGACCTGAATATGGTACCTGGCTAGAGAGTACAT  
TACTGTCTTTACTGGTCCACTGACCCTCACCACCATTTGGAGAGACACCACCCCTGTAAAGGATGAG  
GAGTACCTATTTGTCATCTTTGACTTCTTGATTGGTGTCTCATCTTTGCCACTATTGTGGGAAATGTGG  
GCTCCATGATCTCCAACATGAATGCCACACGAGCAGAGTCCAGGCCAAGATTGATGCTGTCAAACACTA  
CATGTCAGTTCCGAAAGGTCAGCAAAGACATGGAAGCCAAGGTCATCAAATGGTTTGACTACTTGTGGACC  
AATAAGAAGACAGTAGATGAACGAGAAGTCTCAAGAACCTGCCAGCAAAGCTCAGGGCTGAGATAGCCA  
TTAATGTTCACTTGTCCACTCTGAAGAAAGTGCGCATATTCAGGATTGTGAAGCTGGCCTACTGGTGG  
ACTGGTACTGAAGCTTCGTCTCAGGCTTTAGTCCTGGAGATTATTTGCCGTAAGGGGGACATTGGC  
AAGGAAATGTACATCATCAAGGAGGGCAAGTTGGCAGTGGTAGCTGATGATGGCTGACTCAGTATGCCT  
TGCTCTCAGCTGGGAGCTGCTTTGGTGGAGATTAGTATCCTTAACATTAAGGGTAGCAAAATGGGCAATCG  
ACGTAAGTCTAATATCCGTAGCCTGGGCTACTCAGATCTCTTCTGCTTGTCCAAGGACGATCTTATGGAA  
GCTGTAAGTACTGATATCCTGATGCCAAGAAGTCTGGAGGAACGGGTAGGGAGATCCTGATGAAGGAAG  
GTCTACTGGATGAGAATGAAGTGGCAGCTAGTATGGAGGTAGATGTTTCCAGGAGAAGCTGGAACAGTTGGA  
GACAAACATGGATACCTTGTACACTCGCTTTGCCCGCCTGCTGGCTGAGTACACTGGGGCCAGCAGAAG  
CTCAAGCAACGCATCACAGTGTAGAGACCAAGATGAAACAGAACCATGAGGATGATTATCTATCAGATG  
GGATAAACACTCTGAGCCAACCTGCTGTGAA

ACGCGTACGCGGCCGCTCGAGCAGAACTCATCTCAGAAGAGGATCTGGCAGCAAATGATATCCTGGATT  
ACAAGGATGACGACGATAAGGTTTAA

Protein Sequence: >RR201869 representing NM\_012928  
 Red=Cloning site Green=Tags(s)

MMTEKSNQVVKSSPANNHNNHPPPSIKANGKDDHRAGSRPQSVAAADDDTSPELQRLAEMDTPRRGRGGFQR  
 I VRLVGVIRDWANKNFREEEPRPDSFLERFRGPELQTVTTHQGDDKGGKDGEGKTKKKFELFVLDPAGD  
 WYYRWLFVIAMPVLYNWCLLVARACFSDLQRNYFVWVLVDYFSDTVYIADLIIRLRTGFLEQGLLVKDP  
 KKL RDNYIHTLQFKLDVASIIPD LIYFAVGIHSPEVRFNRLHFARMFEFFDRTE TRTSYPNIFRISNL  
 VLYILVI IHNACIYYVISK SIGFGVDTWYYPNITDPEYGYLAREYIYCLYWSTLTLTTIGETPPPVKDE  
 EYLFVIFDFLIGVLIFATIVGNVGSMSNMNATRAEFQAKIDAVKHMQFRKVSKDMEAKVIKWFIDLWT  
 NKKTVDEREVLKNLPAKLRAEIAINVHLSTLKKVRIFQDCEAGLLVELVLKLRPQVFSFGDYICRKGDIG  
 KEMYIIKEGLAVVADDGVTQYALLSAGSCFGEISILNIKSGSKMGNRRTANIRSLGYSDLFCLKDDLME  
 AVTEYPD AKKVL EERGREILMKEGLLDENEVAASMEVDVQEKLEQLETNMDTLYTRFARLLAEYTG AQQK  
 LKQRITVLETKMKQNHEDDYLSDGINTPEPTAAE

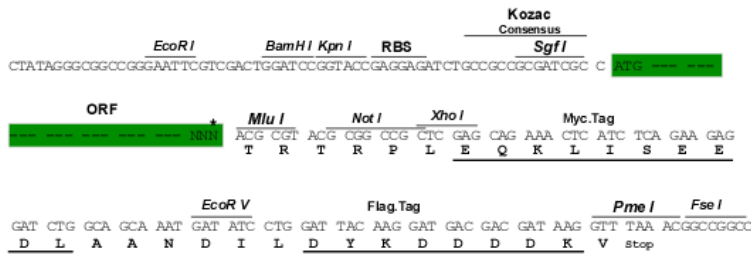
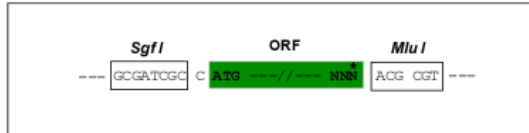
TRTRPLEQKLI SEEDLAANDILDYKDDDDKV

Chromatograms: [https://cdn.origene.com/chromatograms/ja1772\\_f06.zip](https://cdn.origene.com/chromatograms/ja1772_f06.zip)

Restriction Sites: SgfI-MluI

Cloning Scheme:

Cloning sites used for ORF Shuttling:



\* The last codon before the Stop codon of the ORF

ACCN: NM\_012928

ORF Size: 1992 bp

**OTI Disclaimer:** Due to the inherent nature of this plasmid, standard methods to replicate additional amounts of DNA in E. coli are highly likely to result in mutations and/or rearrangements. Therefore, OriGene does not guarantee the capability to replicate this plasmid DNA. Additional amounts of DNA can be purchased from OriGene with batch-specific, full-sequence verification at a reduced cost. Please contact our customer care team at [custsupport@origene.com](mailto:custsupport@origene.com) or by calling 301.340.3188 option 3 for pricing and delivery.

The molecular sequence of this clone aligns with the gene accession number as a point of reference only. However, individual transcript sequences of the same gene can differ through naturally occurring variations (e.g. polymorphisms), each with its own valid existence. This clone is substantially in agreement with the reference, but a complete review of all prevailing variants is recommended prior to use. [More info](#)

**OTI Annotation:** This clone was engineered to express the complete ORF with an expression tag. Expression varies depending on the nature of the gene.

**Components:** The ORF clone is ion-exchange column purified and shipped in a 2D barcoded Matrix tube containing 10ug of transfection-ready, dried plasmid DNA (reconstitute with 100 ul of water).

**Reconstitution Method:**

1. Centrifuge at 5,000xg for 5min.
2. Carefully open the tube and add 100ul of sterile water to dissolve the DNA.
3. Close the tube and incubate for 10 minutes at room temperature.
4. Briefly vortex the tube and then do a quick spin (less than 5000xg) to concentrate the liquid at the bottom.
5. Store the suspended plasmid at -20°C. The DNA is stable for at least one year from date of shipping when stored at -20°C.

**RefSeq:** [NM\\_012928.1](#), [NP\\_037060.1](#)

**RefSeq Size:** 3027 bp

**RefSeq ORF:** 1995 bp

**Locus ID:** 25411

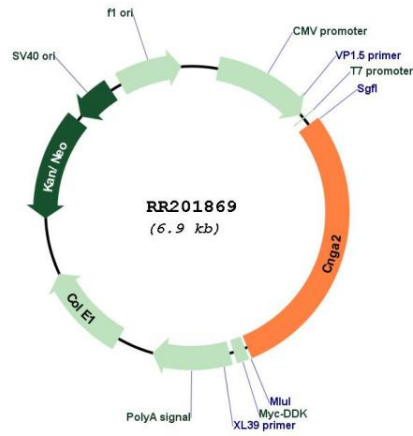
**UniProt ID:** [Q00195](#)

**Cytogenetics:** 16q12.4

**MW:** 76.6 kDa

**Gene Summary:** cyclic nucleotide-gated ion channel involved in signal transduction; may participate in neural communication and plasticity [RGD, Feb 2006]

Product images:



Circular map for RR201869