

Product datasheet for **RR201855**

Ptgis (NM_031557) Rat Tagged ORF Clone

Product data:

Product Type:	Expression Plasmids
Product Name:	Ptgis (NM_031557) Rat Tagged ORF Clone
Tag:	Myc-DDK
Symbol:	Ptgis
Synonyms:	PGIS
Vector:	pCMV6-Entry (PS100001)
E. coli Selection:	Kanamycin (25 ug/mL)
Cell Selection:	Neomycin



[View online »](#)

ORF Nucleotide Sequence:

>RR201855 representing NM_031557
 Red=Cloning site Blue=ORF Green=Tags(s)

TTTTGTAATACGACTCACTATAGGGCGGCCGGAATTCGTCGACTGGATCCGGTACCGAGGAGATCTGCC
 GCC**CGCATCGCC**

ATGTCCTGGGCCGCTCTGCTCGGCCTTCTGGCCGTGTTACTGTTGCTGCTGCTGAGCCGCCGGC
 GCGCGCGCGACCCGGTGAAGCTCCGTTGGACCTGGGCAGCATCCCTGGCTGGGCCATGCCTTGGAGTT
 TGGGAAGGATGCCGCCAGCTTCTTACCAGGATGAAGGAGAAGCACGGTGACATATTTACTGTGCTGGT
 GGGGGCAGGATGTCAGTGTCTCTGGACCCACACTCTTACGACACAGTGGTGTGGGATCTGCGTACAC
 GGCTGGACTTCCACCCCTACGCCATCTTCTCATGGAGAGGATTTTTGATCTGCAGCTTCCAAATTTCAA
 CCCCAGCGAGGAGAAGGCCAGGATGAAGCCGACGCTCATGCACAAAGACCTGCAGGCGCTCACGGAAGCC
 ATGTATACCAACCTGCGCACCGTCTGCTGGGTGACTCCACAGAAGGAGGAGTGGCTGGCAGGAGAAG
 GTCTGCTTGAGTTCTCTACAGTCCCTGCTCAGCGCTGGCTACCTGACCCTGTATGGAGTGGAGGCCCTC
 ACCACGCACCCAGAGAGTCAGGCCCTCGACCGTGACCACTCAGCCGACGTTTTCCGCACCTTCGCCAG
 CTGGATCTGATGCTCCCAAACTGGCTCGAGGCTCCTTGTGAGTGGGGATAAAGACCATGCATGCAGTG
 TCAAAAGCCGCTGTGGAAGCTGCTGTCTCCAGCCGGACTGGCCTCCAGGGCTGACCCGGAGCAGCTGGTT
 GGAGAGTTACCTGAGACATCTTGAGGAGATGGGGTATCAGAGGACATGCAGGCCCGGGCACTGGTGTG
 CAGCTCTGGGCCACACAAGGGAATATGGGACCCACGGCTTTCTGGCTCCTCTTCTCTCAAGAACC
 CGGAAGCCCTCGATGCTGTCCATGCAGAGCTGAAACGCATCGTCTGGCAAGCAGAGAAGCCGTGTTTTACA
 GATGACCCACTCCCGCAGAAGATTCTAGACAGCATGCCTGTGCTAGACAGTGTGCTCAATGAGACCCTC
 CGGCTCACGGCCGCCCTTTCATCACCCGTGAGGTCATGGCAGACCTGGCCTTGCCTATGGCAGACAGGA
 GGGAATTCTCTCTCGACGCGGTGACCGCTTCTCTCTTTCTTCTGAGTCCCAGAAAGACCAGAA
 AATCTACACAGAACCTGAAGTCTTTAAATAACAACCGGTTCTTGAACCCAGATGGGTGAGAAAAGAAAGAT
 TTTTACAAGATGGGAAACGGCTAAAGAATTACAACATGCCTTGGGGCGCAGGGCACAACAGTGCCTGG
 GGAAGAGCTATGCCATCAACAGCATCAACAGTTTGTGGTCTGCTGCTGACTCATTTTCGACCTGGAGCT
 GGTGAGTGGACACAGAGGTCCTGGAGTTTACCTTAGCAGATATGGCTTTGGCCTGATGCAGCCGGAG
 GAAGATGTGCCATCCGGTACCGTACCAGGCTG

ACGCGTACGCGGCCGCTCGAGCAGAAACTCATCTCAGAAGAGGATCTGGCAGCAAATGATATCTGGATT
 ACAAGGATGACGACGATAAGGTTTAA

Protein Sequence:

>RR201855 representing NM_031557
 Red=Cloning site Green=Tags(s)

MSWAALLGLLAVLLLLLLLLSRRRARRPGEPLDLGSIPWLGHALEFGKDAASFLTRMKEKHGDIPTVLV
 GGRYVTLLDPHSYDTPVWDLRRLDFHPYAIFLMERIFDLQLPNFNPSEEKARMKPTLMHKDLQALTEA
 MYTNLRTVLLGDSTEGGSGWQEKLLLEFSYSSLLSAGYLTLYGVEASPRTHESQALDRDHSADVFRTRQ
 LDLMLPKLARGSLVSGDKDHACSVKSRWLKLLSPAGLASRADRSSWLESYLRHLEEMGVSEDMQARALVL
 QLWATQGNMGPTAFWLLFLLNPEALDAVHAELKRIWQAEKPVLMQMTALPQKILDSMPVLDVSLNETL
 RLTAAPFITREVMADLALPMADRREFSLRRGDRLLLFPFLSPQKDPEIYTEPEVFKYRNFLNPDGSEKGD
 FYKDGKRLKKNYMPWGAGHNQCLGKSYAINSIKQFVVLVLLTHFDLELVSEDETEVPEFDLSRYGFGMLMQPE
 EDVPIRYRTRL

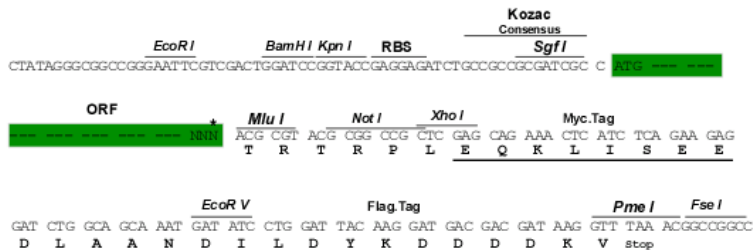
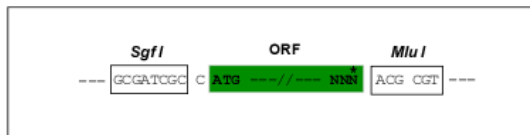
TRTRPLEQKLISEEDLAANDILDYKDDDDKV

Restriction Sites:

SgfI-MluI

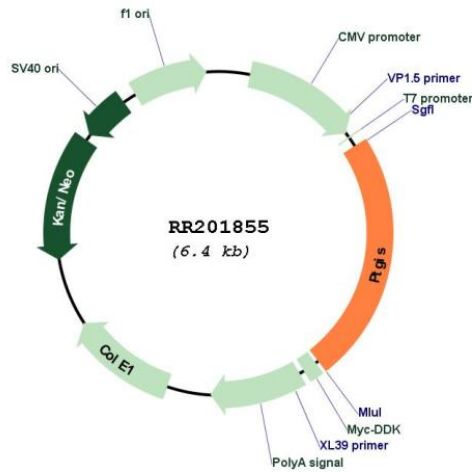
Cloning Scheme:

Cloning sites used for ORF Shutting:



* The last codon before the Stop codon of the ORF

Plasmid Map:



ACCN: NM_031557

ORF Size: 1503 bp

OTI Disclaimer: The molecular sequence of this clone aligns with the gene accession number as a point of reference only. However, individual transcript sequences of the same gene can differ through naturally occurring variations (e.g. polymorphisms), each with its own valid existence. This clone is substantially in agreement with the reference, but a complete review of all prevailing variants is recommended prior to use. [More info](#)

OTI Annotation: This clone was engineered to express the complete ORF with an expression tag. Expression varies depending on the nature of the gene.

Components: The ORF clone is ion-exchange column purified and shipped in a 2D barcoded Matrix tube containing 10ug of transfection-ready, dried plasmid DNA (reconstitute with 100 ul of water).

Reconstitution Method:	<ol style="list-style-type: none">1. Centrifuge at 5,000xg for 5min.2. Carefully open the tube and add 100ul of sterile water to dissolve the DNA.3. Close the tube and incubate for 10 minutes at room temperature.4. Briefly vortex the tube and then do a quick spin (less than 5000xg) to concentrate the liquid at the bottom.5. Store the suspended plasmid at -20°C. The DNA is stable for at least one year from date of shipping when stored at -20°C.
RefSeq:	<u>NM_031557.2</u> , <u>NP_113745.1</u>
RefSeq Size:	1777 bp
RefSeq ORF:	1506 bp
Locus ID:	25527
UniProt ID:	<u>Q62969</u>
Cytogenetics:	3q42
MW:	57.1 kDa
Gene Summary:	catalyzes the conversion of prostaglandin H2 to prostacyclin in prostaglandin biosynthesis [RGD, Feb 2006]