

Product datasheet for RR201836L3

Abcb9 (NM_022238) Rat Tagged Lenti ORF Clone

Product data:

Product Type:	Expression Plasmids
Product Name:	Abcb9 (NM_022238) Rat Tagged Lenti ORF Clone
Tag:	Myc-DDK
Symbol:	Abcb9
Synonyms:	Tap1
Mammalian Cell Selection:	Puromycin
Vector:	pLenti-C-Myc-DDK-P2A-Puro (PS100092)
E. coli Selection:	Chloramphenicol (34 ug/mL)
ORF Nucleotide Sequence:	The ORF insert of this clone is exactly the same as(RR201836).
Restriction Sites:	SgfI-MluI
Cloning Scheme:	

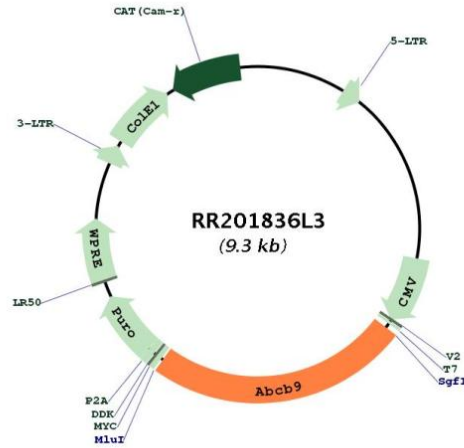
Cloning sites used for ORF Shuttling:



* The last codon before the Stop codon of the ORF.



[View online »](#)

Plasmid Map:


ACCN: NM_022238

ORF Size: 2286 bp

OTI Disclaimer: The molecular sequence of this clone aligns with the gene accession number as a point of reference only. However, individual transcript sequences of the same gene can differ through naturally occurring variations (e.g. polymorphisms), each with its own valid existence. This clone is substantially in agreement with the reference, but a complete review of all prevailing variants is recommended prior to use. [More info](#)

OTI Annotation: This clone was engineered to express the complete ORF with an expression tag. Expression varies depending on the nature of the gene.

Components: The ORF clone is ion-exchange column purified and shipped in a 2D barcoded Matrix tube containing 10ug of transfection-ready, dried plasmid DNA (reconstitute with 100 ul of water).

Reconstitution Method:

1. Centrifuge at 5,000xg for 5min.
2. Carefully open the tube and add 100ul of sterile water to dissolve the DNA.
3. Close the tube and incubate for 10 minutes at room temperature.
4. Briefly vortex the tube and then do a quick spin (less than 5000xg) to concentrate the liquid at the bottom.
5. Store the suspended plasmid at -20°C. The DNA is stable for at least one year from date of shipping when stored at -20°C.

RefSeq: [NM_022238.1](#), [NP_071574.1](#)

RefSeq Size: 3303 bp

RefSeq ORF: 2289 bp

Locus ID: 63886

UniProt ID: [Q9QYJ4](#)

Cytogenetics: 12q15

Gene Summary: ATP-dependent low-affinity peptide transporter which translocates a broad spectrum of peptides from the cytosol to the lysosomal lumen. Displays a broad peptide length specificity from 6-mer up to at least 59-mer peptides with an optimum of 23-mers. Favors positively charged, aromatic or hydrophobic residues in the N- and C-terminal positions whereas negatively charged residues as well as asparagine and methionine are not favored (By similarity).[UniProtKB/Swiss-Prot Function]