

## Product datasheet for **RR201812**

### **Krt80 (NM\_001008815) Rat Tagged ORF Clone**

#### **Product data:**

Product Type:	Expression Plasmids
Product Name:	Krt80 (NM_001008815) Rat Tagged ORF Clone
Tag:	Myc-DDK
Symbol:	Krt80
Synonyms:	Kb2; Kb20
Vector:	pCMV6-Entry (PS100001)
E. coli Selection:	Kanamycin (25 ug/mL)
Cell Selection:	Neomycin



[View online »](#)

**ORF Nucleotide Sequence:**

>RR201812 representing NM\_001008815  
 Red=Cloning site Blue=ORF Green=Tags(s)

TTTTGTAATACGACTCACTATAGGGCGGCCGGAATTCGTCGACTGGATCCGGTACCGAGGAGATCTGCC  
 GCC**CGGATCGCC**

ATGGCCTACCGCTCCTGCGTCGTTGGTTCAGTAGCCACAGTGGCTGTGAGGTGACCCCTCGGGTAGTT  
 CCCAGCCTGGGACCTCAGGATGGGGCAGCTGTGGGCTCCCTGGGCTGGCTTCACTCTCGAAGCCTCAC  
 AAGCTGTAGGCCAGCTGGTGTATCCCCAAGGTACTGTGAACCCAGCCTGCTGGTGCCTCTGGACCTC  
 AAGGTGGATCCAGCTGTTCAAGCAGAGAAGCAAGAGAAGGAGGAGATGAAGGTTCTCAATGATAAAT  
 TTGCTCCCTCATTGGCAAGGTACAAGCTCTGGAGCAGCGCAACCACTGCTGGAGACCCGGTGGGGCTT  
 CCTGCAGGGCCAGGGATCAGCCACCTTCGACCTCAGCCACCACTACGAGACATTCAGGGCCGGCTGCAA  
 GAGGAATCCGCAAAGTGAGCCAGGAGCGGGGACAACCTGGAGGCCAGCCTGCTGCAGGTGCTAGAGAAGG  
 TGGAGGAGTCCGCGTCAGGTACGAGGATGAGATCTCCAAGCGCACAGACCTGGAATTTACCTTTGTCCA  
 GCTGAAGAAGGACCTGGATGCTGAGTGTCTCCGACGAAGTGAACGGAAACCAACTCAAGGCCTGCAG  
 GGTTTCGTAGAGCTGATGAGGACAGTCTATGAGCAGGAGCTGAAAGACCTTACAGCCCAAGTGAAGGACG  
 TGTCGGTACCGTGGGCCTGGACAGCCGCTGCCACATCGACCTGAGCGGCATCGTGGAGGAAGTGAAGGC  
 CAGTACGATGCCATCGCTGCTCGAAGCCTGGAGGAGGCTGAAGCCTATTCACGGAGCCAATTTAGGAG  
 CGAGCTGCCCCGCTCAGCGGAGTTCGGGAACAGCCTCCAGAGCAGCCGCTGTGAGATTGCAGACCTCAACG  
 TGCGCATCCAGAAGTGCAGTACAGATCGTCTCAGTCAAGAGCCATTGCCTGAAACTGGAGGAGAACAT  
 CAAGGTGGCCGAGGAACAAGGAGAGTGGCCTTCCAGGACGCCAAGGACAAGATGGCCAGCTGGAGGCT  
 GCCCTGCAGAAGGCCAACAGGACATGGCCCGGACGCTGCGCGAGTACCAGGATCTCATGAACACCAAGC  
 TGGCTCTGGACATAGAGATCGCCACCTACCACAAGCTGATGGAAGGAGAAGAAAGCCGGATGGACCTGCC  
 TTCCACCACTGTGGTCAGTGTGTGAATCCCGATGCAGAACCCTGCCTCCAAGTCTGGCCTCTCCAAG  
 ACCCCCTCCCGGAAGAAGAACCAGCGGAGGCCAGTATCAAATCACTGAAATGTCAGAGAAATACC  
 TCTCCAGGAGTCGGAGGCTCCGAG

**ACGCGT**ACGCGGCCGCTCGAGCAGAACTCATCTCAGAAGAGGATCTGGCAGCAAATGATATCCTGGATT  
 ACAAGGATGACGACGATAAGGTTTAA

**Protein Sequence:**

>RR201812 representing NM\_001008815  
 Red=Cloning site Green=Tags(s)

MAYRSCVVGFFSSHSGCEVTPAGSSQPGTSGWGSCLPGPGFSSRSLTSCRPAAGVIPKVTVNPSLLVPLDL  
 KVDPAVQQKNQEKEEMKVLNDKFASLIGKVQALEQRNQLLETRWGFLLQGGSATFDLSHHYETFQGRLLQ  
 EELRKVSQERQLEASLLQVLEKVEEFRVRYEDEISKRTDLEFTFVQLKDLDAECLRTELETKLKGLQ  
 GFVELMRTVYEQELKDLTAQVKDVSVTVGLDSRCHIDLSGIVEEVKAQYDAIAARSLLEEAEAYSRSQLEE  
 RAARSAEFGNSLQSSRCEIADLNVRISQIVSVKSHCLKLEENIKVAEEQGELAFQDAKDMAQLEA  
 ALQKAKQDMARQLREYQDLMNTKLALDIEIATYHKLMEGEESRMDLPSTTVVSAVQSRCTTASKSGLSK  
 TPSRKKKNRGGPVIKITEMSEKYLSESEASE

**TR**TRPLEQKLISEEDLAANDILDYKDDDDKV

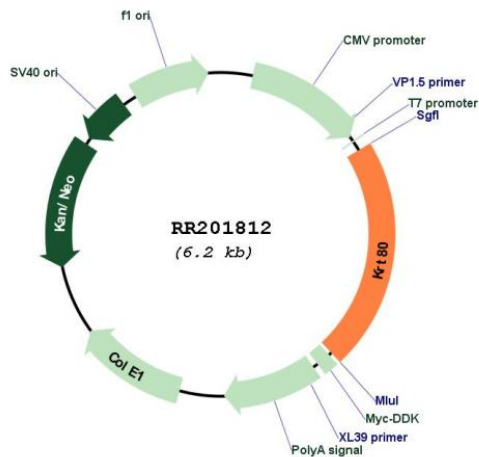
**Restriction Sites:**

Sgfl-MluI

Cloning Scheme:



Plasmid Map:



ACCN: NM\_001008815

ORF Size: 1356 bp

OTI Disclaimer: The molecular sequence of this clone aligns with the gene accession number as a point of reference only. However, individual transcript sequences of the same gene can differ through naturally occurring variations (e.g. polymorphisms), each with its own valid existence. This clone is substantially in agreement with the reference, but a complete review of all prevailing variants is recommended prior to use. [More info](#)

OTI Annotation: This clone was engineered to express the complete ORF with an expression tag. Expression varies depending on the nature of the gene.

Components: The ORF clone is ion-exchange column purified and shipped in a 2D barcoded Matrix tube containing 10ug of transfection-ready, dried plasmid DNA (reconstitute with 100 ul of water).

**Reconstitution Method:**

1. Centrifuge at 5,000xg for 5min.
2. Carefully open the tube and add 100ul of sterile water to dissolve the DNA.
3. Close the tube and incubate for 10 minutes at room temperature.
4. Briefly vortex the tube and then do a quick spin (less than 5000xg) to concentrate the liquid at the bottom.
5. Store the suspended plasmid at -20°C. The DNA is stable for at least one year from date of shipping when stored at -20°C.

**RefSeq:** [NM\\_001008815.1](#), [NP\\_001008815.1](#)

**RefSeq Size:** 1359 bp

**RefSeq ORF:** 1359 bp

**Locus ID:** 315318

**UniProt ID:** [Q6IMF1](#)

**Cytogenetics:** 7q36

**MW:** 50.6 kDa