

Product datasheet for **RR201810**

Pnn (NM_001109023) Rat Tagged ORF Clone

Product data:

Product Type:	Expression Plasmids
Product Name:	Pnn (NM_001109023) Rat Tagged ORF Clone
Tag:	Myc-DDK
Symbol:	Pnn
Vector:	pCMV6-Entry (PS100001)
E. coli Selection:	Kanamycin (25 ug/mL)
Cell Selection:	Neomycin



[View online »](#)

ORF Nucleotide
Sequence:

>RR201810 representing NM_001109023
 Red=Cloning site Blue=ORF Green=Tags(s)

TTTTGTAATACGACTCACTATAGGGCGGCCGGAATTCGTCGACTGGATCCGGTACCGAGGAGATCTGCC
 GCC**CGCATCGCC**

ATGGCGGTGCTGTGAGAGCTTTGCAGGAGCAGCTAGAAAAGGCCAAAGAGAGCCTCAAGATGTGGACG
 AGAATATCCGCAAGCTCACCGGGCGGGACCCGAATGATGTGAGGCCCATCCAAGCCAGATTGCTGGCCCT
 TTCTGGTCTGGTGGAGGTAGAGGACGAGGTAGTTTATTGCTAAGGCGTGGATTCTCAGATAGTGGAGGA
 GGACCCCAAGCAAAACAGAGAGACCTGGAAGGGCAGTCAGTAGGCTGGTGGAGAGCGTCGGACAAGAA
 GAGAATCACGCCAGGAAAGTGACCCAGAAGACGATGATGTTAAAAAGCCAGCACTGCAATCTTCTGTTGT
 AGCTACCTCCAAAGAACGCACACGTAGAGACCTTATCCAGGATCAAAACATGGATGAAAAGGGAAAGCAA
 AGGAACCGACGAATATTTGGCTTGTGATGGGCACTCTTCAGAAATTTAAACAAGAATCTACTGTTGCTA
 CTGAACGGCAAAAAGAGACGCCAAGAAATTAACAAAAACTTGAAGTTCAGGCTGAAGAAGAGAGAAAAGCA
 GGTGAAAATGAGAGGAGAGAAGTGTGGAGGAGACGTGCTAACAGACAGAAGTGGCGCTTCTGGAA
 CAGAAGGTTGAGCTTGCACAGCTGCAAGAAGAATGGAATGAGCATAATGCCAAGATAATTAAGTATATAA
 GAACCAAGACAAAAGCCCATTTGTTCTATATTCCTGGAAGAATGTGTCCAGCTACCCAAAAGCTAATAGA
 AGAGTCACAGAGAAAAATGAATGCTTTATTTGAAGGTAGACGCATCGAATTTGCAGAACAATAAATAAA
 ATGGAGGCTAGGCCTAGAAGACAATCAATGAAGGAAAAAGAGCATCAGGTGGTGCCTAATGAAGAACAGA
 AGGCGGAACAAGAAGAGGGTAAGGTGGCTCAGCGAGAGGAAGAGTTGGAGGAGACAGGTAATCAGACAA
 TGACGTAGAAATAGAGGAGGCAGGAGAGGAAGAGAAGGAAGCAGGTGTAGTTCATAGTGTGACAGAGAAG
 GACCAGGAGGAGGAGGAACAAGCAGGAGACGGAGGCTAGGATGGAGGAGGAGACTGGGTAAAGAGAAG
 TGAGAAGCAGCAGGATAGTCAGCCAGAAGAATTATGGATGTGTTAGAGATGGTTGAAAAGTGTCAAAAA
 TGTGATTGCTGAGCAGGAGGTGATGGAGACTAATCAAGTTGAAAAGTATAGAACCTTCAGAAAATGAAACT
 AGCAAGGAATTGGAGCCAGAGATGGAATTTGATGTTGAGCCAGATAAAGAATGTAATCTCTTTCTCCTG
 GAAAAGAGAATATTAATTCTCTGGAAGTGGAAAAGGAGTCTGAGGAAAAAGAGGAAAAAGAAGATAAAGA
 GCCTGAGCCCAACCTGAGCCTGTGGCTCAGCCTCAGCCCCACCTCAGCCCTGCCCCAGAGCCAGCCC
 CATTCTCAGCCCCATTCTCAGCCCCATTCTCAGCCCCAACCTGCACTCCAGTCCCAGCCTCTCAGTCAGC
 CTGAGGCTTTGCCATTGGCTGTTCTGCAGCCTCCACCCAGGTTATTCCAGGAGCAAGGGAATCTACCTCC
 TGAGCGGAAGGATTTTCTGTAGAGGCTATAAACTCCCTGAGGTGCCTGTAGAGCCAGTCTTGACAGTG
 CATTTCAGAAAACAAAAGCAAAAATAAGACTAGGAGCAGAAGCAGAGGGCGAGCAAGAAATAAAACGAGCA
 AGAGTAGAAGTCGCAGCAGCAGCAGCAGTGTCCAGTAGCAGCTCTACTAGTAGCAGCAGTGGGAGCAG
 CTCCAGCAGTGGCAGCAGTAGTAGTGAAGCAGCTCCAGCAGCAGCTCCAGCACAAGTGGGAGCAGCAGC
 AGAGACAGCAGCAGCAGCAGTAGCAGTAGCAGTAGAGTAGGAGTGCAGTAGGGGCCGAGGACATAACC
 GAGATAGGAAGCAGAAAGGAGCGTGGACCGGAAGCGAAGGGACACTTCAGGACTAGAAAAGTCAAAA
 GTCTTCAAAGGTGGTAGTAGTAGAGATACGAAAGGATCAAAGGATAAGAATCCCGATCTGACAGAAAA
 AGGTCTATATCAGAGAGTAGTCGATCAGGCAAAAGATCTTCAAGAAGTGAAGAGACCGAAAATCAGACA
 GGAAGACAAAAGCGT

ACGCGTACGCGGCCGCTCGAGCAGAACTCATCTCAGAAGAGGATCTGGCAGCAAATGATATCCTGGATT
 ACAAGGATGACGACGAT AAGGTTTAA

Protein Sequence: >RR201810 representing NM_001109023
 Red=Cloning site Green=Tags(s)

MAVAVRALQEQLKAKESLKNVDENIRKLTGRDPNDVRPIQARLLALSGPGGGRGRGSLLLRRGFSDSGG
 GPPAKQRDLEGAVSRLGGERRTRRESRQESDPEDDDVKKPALQSSVVATSKERTRRDLIQDQNMDEKQKQ
 RNRRIIFGLLMGTLQKFKQESTVATERQKRRQIEIQKLEVAEEERKQVENERRELFERRAKQTELRLLE
 QKVELAQLQEEWNEHNAKIIKYIRTKTKPHLFYIPGRMCPATQKLI EESQRKMNALFEGRRIEFAEQINK
 MEARPRRQSMKEKEHQVVRNEEQKAEQEEGKVAQREEELEETGNQHNDVEIEEAGEEEKEAGVVHSDAEK
 DQEEEEQKQETEARMEEETGVREGEKQQDSQPEEVMDVLEMVESVKNVIAEQEVMETNQVESIEPSENET
 SKELEPEMEFDVEPDKECKSLSPGKENINSLEVEKESEEKKEKEDKEPEPQPEPVAQPQPPQPPLPQSQP
 HSQPHSQPHSQPQALQSQPLSQPEALPLAVLQPPPQVIQEQGNLPPERKDFPVEAIKLEVPVPEPVLTV
 HSENKSKNKTRSRSRGRARNKTSKSRSSSSSSSSSSSTSSSSGSSSSGSSSSRSSSSSSSTSGSSS
 RDSSSSSSSSSESRSRSRGRGHNRDRKHRRSVDRKRRDTSGLERSHKSSKGGSSRDTKGSKDKNSRDRK
 RSISESSRSGKRSSRSERDRKSDRKDKRR

TRTRPLEQKLI SEEDLAANDILDYKDDDDKV

Restriction Sites:

Sgfl-MluI

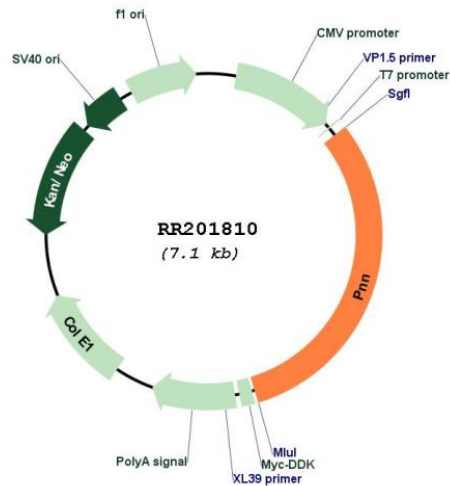
Cloning Scheme:

Cloning sites used for ORF Shuttling:



* The last codon before the Stop codon of the ORF

Plasmid Map:



ACCN: NM_001109023

ORF Size: 2187 bp

OTI Disclaimer: The molecular sequence of this clone aligns with the gene accession number as a point of reference only. However, individual transcript sequences of the same gene can differ through naturally occurring variations (e.g. polymorphisms), each with its own valid existence. This clone is substantially in agreement with the reference, but a complete review of all prevailing variants is recommended prior to use. [More info](#)

OTI Annotation: This clone was engineered to express the complete ORF with an expression tag. Expression varies depending on the nature of the gene.

Components: The ORF clone is ion-exchange column purified and shipped in a 2D barcoded Matrix tube containing 10ug of transfection-ready, dried plasmid DNA (reconstitute with 100 ul of water).

Reconstitution Method:

1. Centrifuge at 5,000xg for 5min.
2. Carefully open the tube and add 100ul of sterile water to dissolve the DNA.
3. Close the tube and incubate for 10 minutes at room temperature.
4. Briefly vortex the tube and then do a quick spin (less than 5000xg) to concentrate the liquid at the bottom.
5. Store the suspended plasmid at -20°C. The DNA is stable for at least one year from date of shipping when stored at -20°C.

RefSeq: [NM_001109023.1](#), [NP_001102493.1](#)

RefSeq Size: 2821 bp

RefSeq ORF: 2190 bp

Locus ID: 368070
Cytogenetics: 6q23
MW: 82.6 kDa