

Product datasheet for RR201799

Mpi (NM_001004081) Rat Tagged ORF Clone

Product data:

Product Type: Expression Plasmids
 Product Name: Mpi (NM_001004081) Rat Tagged ORF Clone
 Tag: Myc-DDK
 Symbol: Mpi
 Synonyms: MGC94106
 Vector: pCMV6-Entry (PS100001)
 E. coli Selection: Kanamycin (25 ug/mL)
 Cell Selection: Neomycin
 ORF Nucleotide Sequence: >RR201799 representing NM_001004081
 Red=Cloning site Blue=ORF Green=Tags(s)

TTTTGTAATACGACTCACTATAGGGCGCCGGAATTCGTCGACTGGATCCGGTACCGAGGAGATCTGCC
 GCC**CGGATCGC**C

ATGGCGAATCCGCGAGTGTCCCACTTTCCTGTGTGGTGCAGCAGTATGCCTGGGGGAAGGTGGGCTCCA
 AAAGTGAAGTGGCATGCCTACTGGCTTGCAGTGACCCACTGACCCAGATCTCAGAGGACAAGCCTTATGC
 GGAGCTGTGGATGGGGGCACACCCCGGGGAGATGCCAAGATCCTTGACAACCGTATTTCCAAAAGACC
 TTAGGCCAGTGGATTGCTGAGAACCAGAACAGCTTAGGCCAAAAGGTCAAAGACACCTTTAACGGAAAGC
 TGCCCTTCTCTTCAAAGTGCTCTCAGTGGAAACGGCCCTGTCTATCCAGGCACACCCCTAACAAAGGAGCT
 GGCAGAGAAGCTGCACCTTCAGGCTCCAGAGCACTACCCCGATGCCAACCACAAGCCAGAAATGGCCATT
 GCCCTTACACCCTTCCAAGGCTTGTGTGGTTTCCGGCCAGTGGAGGAGATTGTGACCTTTCTGAAGAAGG
 TGCCTGAGTTCAGTCACTGATTGGAGAGGATGCCACAGCACAGCTGAAGAAGAGCATGAATGAGGGTTC
 TGGGGCCATGGCCTCTGCTCTGAAGAACTGCTTTCCACCTGATGAAGAGTGAAGAAGGTGGTGGTG
 GAGCAGCTAACCTGTTGGTAAACGGATCTCCAGCAAATATCTAACGGAAACAGCATGGATGACATTT
 GTGGGGAGCTCTTGCTACAGCTGCACCAGCAGTACCCGGGTGATATCGGATGTTTTCGCCATCTACCTCCT
 GAACCTGATCACCTTGAAGCCTGGGAAGCCATGTTTCTGGAGGCCAACGTGCCCATGCCATACCTGAAG
 GGAGACTGCGTGGAATGCATGGCATGTTTCAGACAATACCGTGCCTGCTGGCCTGACACCCAAATTCATTG
 ATGTGTCAACCCTGTGTGAAATGCTCGACTACACACCTAGCCCCAGCAAAGACAGACTGTTTGCACCAAC
 ACTGAGTCAAGATGACCCTACCTCTCTATCTACGATCCCCCTGTGCCAGACTTCACAGTTATGAAGATA
 GAGGTCCCTGGCTCCGCTCACTGAATACAAAGTCTTGACACTAGACTCTGCCAGCATCCTTCTGTTGGTCC
 AAGGGACAGTGACAGCTATCATACCTTCAGTCCAAGGAGAAATCCCTCTGTCCCCTGGTGGAGTGCTCTT
 CATTGGGGCCAATGAGACTGTCTACTGAAGCTTACCGTACCAAAGAATCTGCTGATATCCGGGCTGCG
 TGCTGTCTG

ACGCGTACGCGGGCCGCTCGAGCAGAAACTCATCTCAGAAGAGGATCTGGCAGCAAATGATATCCTGGATT
 ACAAGGATGACGACGATAAGGTTTAA



[View online »](#)

Protein Sequence: >RR201799 representing NM_001004081
 Red=Cloning site Green=Tags(s)

MANPRVFPLSCVVQYAWGKVGSKSEVACLACSDPLTQISEDKPYAELWMGAHPRGDAKILDNRISQKT
 LGQWIAENQNSLGQKVKDTFNGKLPFLFKVLSVETALSIQAHPNKELAEKHLQAPEHYDPANHKPEMAI
 ALTPFQGLCGFRPVVEIIVTFLLKVPFEFQSLIGEDATAQLKKSMEGSGAMASALKNCFSHLMKSEKKVVV
 EQLNLLVKRISQQISNGNSMDDICGELLQLHQYQPGDIGCFAYLLNLIITLKPGEAMFLEANVPHAYLK
 GDCVECMACSDNTVRAGLTPKFIDVSTLCEMLDYTPSPSKDRLFAPTLSQDDPYLSIYDPPVPDFTYMKI
 EVPGSVTEYKVLTLDSASILLLVQGTVTAIIPSQGEIPLSRGGVLFIGANETVLLKLTVPKNLLIFRAC
 CLL

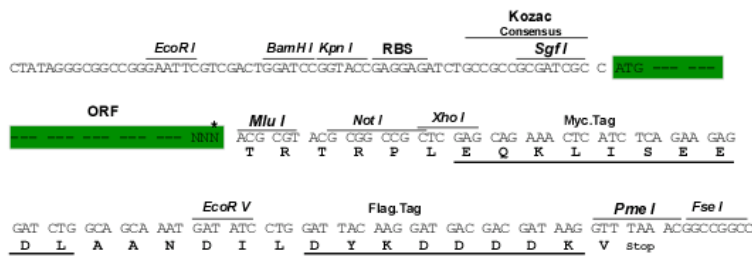
TRTRPLEQKLISEEDLAANDILDYKDDDDKV

Restriction Sites:

Sgfl-MluI

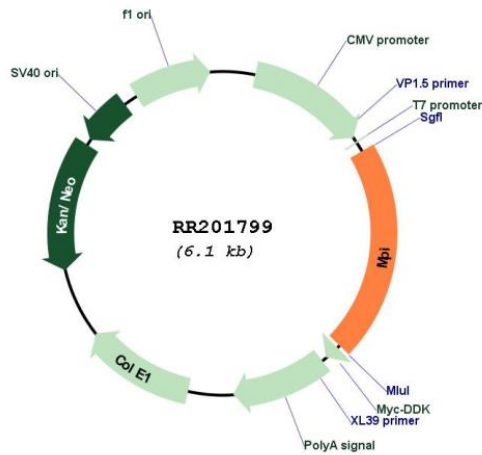
Cloning Scheme:

Cloning sites used for ORF Shuttling:



* The last codon before the Stop codon of the ORF

Plasmid Map:



ACCN: NM_001004081

ORF Size:	1269 bp
OTI Disclaimer:	The molecular sequence of this clone aligns with the gene accession number as a point of reference only. However, individual transcript sequences of the same gene can differ through naturally occurring variations (e.g. polymorphisms), each with its own valid existence. This clone is substantially in agreement with the reference, but a complete review of all prevailing variants is recommended prior to use. More info
OTI Annotation:	This clone was engineered to express the complete ORF with an expression tag. Expression varies depending on the nature of the gene.
Components:	The ORF clone is ion-exchange column purified and shipped in a 2D barcoded Matrix tube containing 10ug of transfection-ready, dried plasmid DNA (reconstitute with 100 ul of water).
Reconstitution Method:	<ol style="list-style-type: none">1. Centrifuge at 5,000xg for 5min.2. Carefully open the tube and add 100ul of sterile water to dissolve the DNA.3. Close the tube and incubate for 10 minutes at room temperature.4. Briefly vortex the tube and then do a quick spin (less than 5000xg) to concentrate the liquid at the bottom.5. Store the suspended plasmid at -20°C. The DNA is stable for at least one year from date of shipping when stored at -20°C.
RefSeq:	NM_001004081.1 , NP_001004081.1
RefSeq Size:	1420 bp
RefSeq ORF:	1272 bp
Locus ID:	300741
UniProt ID:	Q68FX1
Cytogenetics:	8q24
MW:	46.4 kDa
Gene Summary:	Involved in the synthesis of the GDP-mannose and dolichol-phosphate-mannose required for a number of critical mannosyl transfer reactions.[UniProtKB/Swiss-Prot Function]