

Product datasheet for **RR201792**

Rock2 (NM_013022) Rat Tagged ORF Clone

Product data:

Product Type: Expression Plasmids
Product Name: Rock2 (NM_013022) Rat Tagged ORF Clone
Tag: Myc-DDK
Symbol: Rock2
Synonyms: ROCK-II; ROK
Vector: pCMV6-Entry (PS100001)
E. coli Selection: Kanamycin (25 ug/mL)
Cell Selection: Neomycin
ORF Nucleotide Sequence: >RR201792 representing NM_013022
Red=Cloning site Blue=ORF Green=Tags(s)

TTTTGTAATACGACTCACTATAGGGCGGCCGGAATTCGTCGACTGGATCCGGTACCGAGGAGATCTGCC
GCC**CGGATCGCC**

ATGAGCCGGCCCCCGCCGACGGGAAAAATGCCCGGCCCGCCGAGGCCGCGCCGGGGACGGGGCGGGCG
CGGGTCGTCAGAGGAAGCTGGAGGCGCTCATCCGAGACCCTCGCTCGCCATCAACGTGAAAGCCTGCT
GGATGGCTTAAATTCCTTGGTCTTGATTTGGATTTTCCTGCTTTGAGGAAAAATAAAAATAGATAAT
TTCTAAATAGATATGAGAAAATTTGAAAAAAATCAGAGGTTTACAGATGAAAGCAGAAGACTATGATG
TTGTAAGAGTTATTGGAAGAGGTGCTTTTGGTGAAGTTCAGTTGGTTCGTCATAAGGCATCACAGAAGGT
TTATGCAATGAAGCTTCTTAGTAAATTTGAAATGATAAAAAGATCAGATTCTGCTTTTTCTGGGAAGAA
AGAGATATTATGGCTTTTGCTAACAGTCCGTGGGTGGTTCAGCTCTTTGTGCCTTTCAAGATGACAGGT
ATCTGTACATGGTGTGAGTACATGCCAGGTGGAGACCTTGTTAACCTGATGAGCAATTATGATGTGCC
TGAGAAGTGGCCAAGTTTTATACTGCTGAAGTCGTGCTTGCCTGGATGCAATACACTCCATGGGCTTA
ATACACAGAGATGTGAAGCCGATAACATGCTATTGGATAAACACGGACATCTAAAATTAGCAGATTTTG
GCACATGTATGAAAATGGATGAAACAGGCATGGTGCATTGTGATACAGCAGTTGGAACCTCAGACTACAT
ATCACCTGAGTTCTGAAATCACAAAGGAGGTGATGGTTACTATGGACGAGAATGTGATTGGTGGTCTGTA
GGTGTTCCTTTTGGATGTTAGTAGGGGACTCCATTTTATGCAGATTCACCTGTAGGAACCTACA
GCAAAATATGGATCATAAAAATCACTGTGTTTTCTGAAGATACAGAAATTTCTAAACATGCGAAGAA
TCTCATATGTGCCTTCTAACAGACAGGGAGGTACGACTTGAAGAAATGGGGTAGAAGAAATCAAACAG
CATCCTTTCTTTAAGAATGATCAGTGAATTTGGATAACATAAGAGAGACGGCAGCTCCAGTGGTGCCTG
AGCTCAGCAGTGACATAGACAGCAGCACTTTGATGACATTGAGGATGACAAAGGCGATGTAGAGACCTT
CCCGATTCTAAAGCTTTTGTGGGAAATCAGCTGCCTTTTATAGGATTTACCTACTTTAGAGAAAATTTG
TTACTAAGTGATTCTCCACCTTGTAGAGAAAATGATGCAATACAACAAGGAAAAGTGAAGAAAGTCAGG
AGATTCAGAAAAAATTATATGACTAGAAAGAACCTTAGCAGTGAGGTACAAGCCAAGGAGGAACCTGGA
ACAGAAGTGCAAGTCTATTAATACTCGTCTAGAGAAAACAGCAAAGGAACTAGAAGAAGAGATTACCTTT
AGGAAAAATGTGGAATCAACATTAAGACAGCTAGAAAAGAGAAAAGGCCCTTCTTCAGCACAAAATGCAG



AATATCAACGGAAAGCTGATCATGAAGCTGACAAGAAACGGAATTTGGAAAATGATGTTAACAGCTTAAA
AGATCAACTTGAAGATCTGAAGAAAAGAAACCAGAGCTCTCAGATATCCACTGAGAAGGTCAATCAGCTC
CAGAAACAACGGATGAAGCTAATGCTTTGCTAAGAACAGAGTCTGATACTGCAGCACGGTTAAGAAAA
CCCAGGCAGAAAGTTCCAACAGATTGAGCAGCTGGAATCTAACAAATAGAGATCTACAAGATAAAAACTG
CCTGCTTGAAGCTGCCAAGTTAAAACCTTGAGAAGGAATTTATCAATCTTCAGTCAGCTCTAGAATCTGAA
AGAAGGGACCCGACCCATGGATCAGAGATAATTAATGATTTACAAGGTAGAATATCTGGGTTGAAGAAG
ATTTGAAGACTGGCAAACCTTACTAGCAAAAGTAGAGCTGGAGAAGAGACAGCTGCAGGAGAAGCTCAC
TGACTTAGAGAAGGAAAAGAGCAACATGGAAATAGATATGACATATCAACTGAAAAGTTATACAGCAGAGT
TTAGAACAAGAAGCTGAACACAAGACCACAAAAGCACGACTAGCGGATAAAAAAAGATCTATGAAT
CCATTGAAGAAGCTAAATCAGAAGCCATGAAAGAAATGGAGAAGAAGCTGTTGGAAGAGAGGTCTTTAAA
GCAGAAAGTGGAGAACCTACTCTGGAAGCCGAGAAGAGATGTTCTATATTGGATTGTGACCTCAAACAG
TCTCAGCAGAACTGAATGAGCTGCTGAAGCAGAAAGATGTGCTGAATGAGGATGTTAGAAATTTGACAT
TAAAAATAGAGCAGGAACTCAGAAGCGTTGTCTTATGCAAAATGACCTGAAGATGCAGACCCAGCAAGT
TAACACCCTAAAAATGTCAGAAAAGCAATAAAACAAGAAAAATAATCATCTTATGAAAATGAAAATGAAC
TTGAAAAAGCAAAATGCTGAACCTCGAAAAGAGCGGCAGGATGCAGATGGGCAGATGAAGGAACTGCAAG
ACCAACTTGAAGCAGAGCAGTATTTCTCAACCCTCTATAAAACACAAGTTAGAGAAGCTTAAAGAAGAAAA
TGAAAGAGAAAAGCTAAACTTTGTAAGAGATTGCAGCAGAAAAGCAGGATTTACAGGATGAAAGAGACTCC
TTGGCTGCCAGCTGGAGATCACCTCACCAAAGCAGACTCTGAGCAGCTGGCTCGCTCCATTGCTGAGG
AGCAATACTCTGACTTGGAAAAGAGAAGATCATGAAAGAGCTGGAAATCAAAGAGATGATGGCTAGACA
CAAACAAGAGCTTACTGAAAAGGACGCTACAATTGCATCCCTTGAAGAAACAAATAGAACACTAACTAGT
GATGTTGCAAACTTTCGAAAAGGAGAAAGAACTAAACAACAAGTTGAAAGATACCCAAGAACAACCTGT
CAAAGTTGAAAGATGAAGAGATCAGTGCAGCGGCTATTAAGCACAGTTTGAGAAGCAGCTGCTGACTGA
GCGAAGACTCAAGACTCAAGCTGTGAATAAGTTGGCAGAGATCATGAATCGAAAAGAACTGTCAAGCGT
GGTAGTGACACAGATGTGCGAAGAAAAGAAAAGAAAACAGAAAATTACATATGGAGCTTAAAGTCTGAAC
GTGAAAAATTGACACAACAGATGATCAAAATATCAGAAAAGAACTGAATGAAATGCAGGCTCAAATAGCTGA
AGAGAGCCAAATTCGAATAGAACTGCAGATGACCTGGACAGTAAAGACAGTGACATTGAACAGCTTCGG
TCGCAGCTCCAGGCCTTGATATTGGTATGGACAGTTCAGTATAGGCAGTGGACCAGGGGATGCTGAGC
CTGATGACGGATTTCCAGAATCACGATTAGAAGGATGGCTGTCGTTGCCTGTGCGGAACAACACTAAAAA
GTTTGGATGGTTAAGAAGTATGTGATTGTAAGCAGCAAGAAGATTCTTTTCTATGATAGTGAACAAGAT
AAAGAGCAGTCTAACCTTACATGGTGTAGACATAGACAAGCTATTTTCATGTCAGCTGTTACTCAGA
CAGATGTATACAGAGCAGATGCTAAAGAAATCCAAGGATATTTTCAGATCCTGTATGCCAATGAAGGAGA
AAGTAAAAAGGAACCAGAATTTCCAGTGAACCCAGTGGGAGAAAAATCTAATTATATTTGCCACAAGGA
CATGAGTTTATTCCTACTCTTTATCACTTCCCAACCAACTGTGAGGCCTGTATGAAGCCACTGTGGCACA
TGTTTTAAACCTCCTCCTGCTCTAGAGTGGCGTAGATGCCACATTAATGTGATAAAGATCACATGGACAA
AAAGGAAGAGATCATAGCCCCCTGCAAAGTTTATTATGATATATCATCGGCAAAGAACTGTTGTTATTA
GCAAAATCAACGGGAAGACAGCAGAAATGGGTTAGTCGGTTGGTAAAAAGATACCTAAAAAGCCTCCAG
CTCCAGACCCTTTTGCCCGATCATCCCCTAGAACCCTCAATGAAAAACAACAAAACAGTCCATTCGGCG
GCCAGTCGACAGCTTGCTCCAAACAAACCAAGC

ACGCGTACGCGGCGCTCGAGCAGAACTCATCTCAGAAGAGGATCTGGCAGCAATGATATCCTGGATT
ACAAGGATGACGACGAT AAGGTTTAA

Protein Sequence: >RR201792 representing NM_013022
 Red=Cloning site Green=Tags(s)

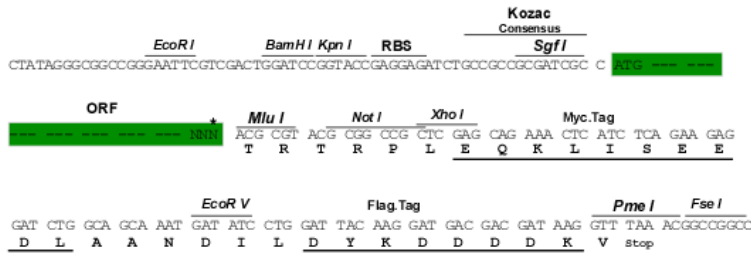
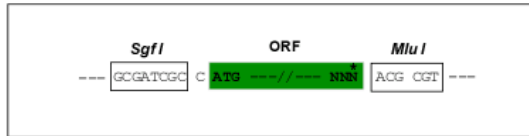
```
MSRPPPTGKMPGAPEAAPGDGAGAGRQRKLEALIRDPRSPINVESLLDGLNSLVLDLDFPALRKNKNIDN
FLNRYEKIVKKIRGLQMKAEYDVVKVIGRGAFGEVQLVRHKASQKVYAMKLLSKFEMIKRSDSAFFWEE
RDIMAFANSPWVQVQLFCFAFQDDRYLYMVMEYMPGGDLVNLMSNYDVPEKAKFYTAEVVLAALDAIHSML
IHRDVKPDNMLLDKHHGLKLADFGTCMKMDETGMVHCDAVGTDPDI SPEVLKSSQGGDGYGREGDWWSV
GVFLFEMLVGDTPFYADSLVGTYSKIMDHKNSLCFPEDTEISKHAKNLICAF L TDREVLRNGVVEEIKQ
HPFFKNDQWNWDNIRETAAPVVPELSSDIDSSNFDDIEDDKGDVETFPPIKAFVGNQLPFI GFTYFRENL
LLSDSPPCRENDAIQTRKSEESQEI QKKLYALEEHL SSEVQAKEELEQKCKSINTRLEKTAKEEEEEITF
RKNVESTLRQLEREKALLQHNAEYQRKADHEADKRNLENDVNSLKDQLEDLKKRNQSSQISTEKVNQL
QKQLDEANALLRTESDTAARLRKTAESSKQIQQLESNNRDLQDKNCLLETAKLKEKEFINLQSALESE
RRDRTHGSEIINDLQGRISGLEEDLKTGKTL LAKVELEKRQLQEKLTDLEKEKSNMEIDMTYQLKVIQSS
LEQEEAEHKTTKARLADKNKIYESIEEAKSEAMKEMEKKLLEERSLKQKVENLLLEAEKRCSILDCDLKQ
SQQKLNELLKQKDVLNEDVRNL TLKIEQETQKRCLMQNDLKMQTQQVNTLKMSEKQIKQENNHLMEMKMN
LEKQNAELRKERQDADGQMKELQDQLEAEQYFSTLYKTQVRELKEENEEKTKLCKELQKQKQDLQDERDS
LAAQLEITLTKADSEQLARSAIEEQYSLEKEKIMKELEIKEMMARHKQELTEKDATIASLEETNRTLTS
DVANLANEKEELNNKLDTQEQLSKLKDEEISAAA IKAQFEKQLL TERTLKTQAVNKLAEIMNRKEPVKR
GSDTDVRRKEKENRKLHMLKSEREKL TQMIKYQKELNEMQAQIAEESQIRIELQMTLDSKSDSIEQLR
SQLQALHIGMDSSSIGSGPGDAEPDDGFPE SRLEGWLSLPVRNNTKFGWVKYVIVSSKKILFYDSEQD
KEQSNPYMVL DIDKLFHVRPVTQTDVYRADAKEIPRIFQILYANEGESKKEPEFPVPEVGEKSNYICHKG
HEFIPTLYHFPTNCEACMKPLWHMFKPPPAL ECRCHIKCHKDHMDKKEEIIAPCKVYYDISAKNLLLL
ANSTEEQQKWVSR LVKIPKPPAPDPFARSSPRTSMKIQNQSIRRRPSRQLAPNKPS
```

TRTRPLEQKLISEEDLAANDILDYKDDDDKV

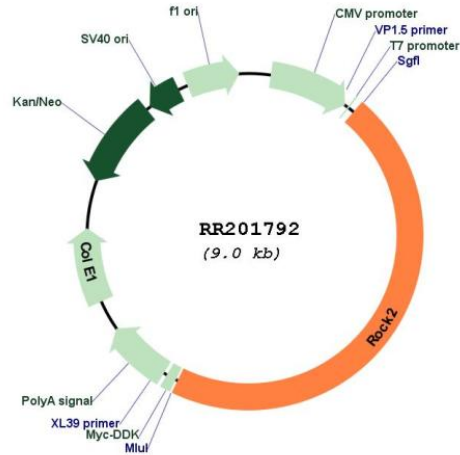
Restriction Sites:
Cloning Scheme:

SgfI-MluI

Cloning sites used for ORF Shuttling:



* The last codon before the Stop codon of the ORF

Plasmid Map:


ACCN: NM_013022

ORF Size: 4164 bp

OTI Disclaimer: The molecular sequence of this clone aligns with the gene accession number as a point of reference only. However, individual transcript sequences of the same gene can differ through naturally occurring variations (e.g. polymorphisms), each with its own valid existence. This clone is substantially in agreement with the reference, but a complete review of all prevailing variants is recommended prior to use. [More info](#)

OTI Annotation: This clone was engineered to express the complete ORF with an expression tag. Expression varies depending on the nature of the gene.

Components: The ORF clone is ion-exchange column purified and shipped in a 2D barcoded Matrix tube containing 10ug of transfection-ready, dried plasmid DNA (reconstitute with 100 ul of water).

Reconstitution Method:

1. Centrifuge at 5,000xg for 5min.
2. Carefully open the tube and add 100ul of sterile water to dissolve the DNA.
3. Close the tube and incubate for 10 minutes at room temperature.
4. Briefly vortex the tube and then do a quick spin (less than 5000xg) to concentrate the liquid at the bottom.
5. Store the suspended plasmid at -20°C. The DNA is stable for at least one year from date of shipping when stored at -20°C.

RefSeq: [NM_013022.2](#), [NP_037154.2](#)

RefSeq Size: 7414 bp

RefSeq ORF: 4167 bp

Locus ID: 25537

UniProt ID: [Q62868](#)

Cytogenetics: 6q16
MW: 160.6 kDa
Gene Summary: a Rho kinase that is involved in inducing membrane blebbing and chromatin condensation [RGD, Feb 2006]