

## Product datasheet for RR201786

### Tmem252 (NM\_001007738) Rat Tagged ORF Clone

#### Product data:

**Product Type:** Expression Plasmids  
**Product Name:** Tmem252 (NM\_001007738) Rat Tagged ORF Clone  
**Tag:** Myc-DDK  
**Symbol:** Tmem252  
**Synonyms:** RGD1359349  
**Mammalian Cell Selection:** Neomycin  
**Vector:** pCMV6-Entry (PS100001)  
**E. coli Selection:** Kanamycin (25 ug/mL)  
**ORF Nucleotide Sequence:** >RR201786 representing NM\_001007738  
 Red=Cloning site Blue=ORF Green=Tags(s)

TTTTGTAATACGACTCACTATAGGGCGCCGGGAATTCGTCGACTGGATCCGGTACCGAGGAGATCTGCC  
 GCC**CGATCGCC**

ATGCAGAACCGGACTGGGCTGGTGTGTGCGCCCTCTCCCTGCTCACGGGCTTCTGATGATTTGCTTGG  
 GGGGCTTCTTCATCTCCAGCTCCAGCTCCCACTCCACAGGAATCTGGTCGTGGCCTATGTGCTTCTGCC  
 TCTGGGCTTTGTGATCCTTCTGAGTGAATTTCTGGGGCACCTACCGCCAAGCAAACGACAACAAAGAG  
 ATGTTCAACCACGTGCTTAGACAGCACCTTGTCTCCAGGACCTGCCCTGGCTACTGTAGACAGGCCTG  
 ACTTTTACCCCCGGCTTATGAAGAGAGCCTGGATGTTGAGAAACAGGCTTGTCTGCAGGCAGAGGGCT  
 CCTAGGATTTCTCCTCCTCTGTATACAGAGACAAGCCTTGAACCCAAGACAAAGACAAAATGACCCA  
 CAACCAGAGGCCCGCCACCCTACCCGGAGAACATAGCAGTTGCAGCAGCTACAGTGAAGACACAGGATG  
 CTGAGGAACCGAGCACAGTGCTGAAGGCCGGGGCTGTTCTCCAGCTCTCAGAACTCGCCAGCTGC

**ACGCGT**ACGCGGCCGCTCGAGCAGAACTCATCTCAGAAGAGGATCTGGCAGCAAATGATATCCTGGATT  
 ACAAGGATGACGACGATAAGGTTTAA

**Protein Sequence:** >RR201786 representing NM\_001007738  
 Red=Cloning site Green=Tags(s)

MQNRTGLVLCALSLLTGFLMICLGGFFISSSSSHSRNLLVAYVLLPLGFVILLSGIFWGTYRQANDNKE  
 MFNHVLRQHAFQDLPLATVDRPDFYPPAYEESLDVEKQACSAGRLLGFPPPLYTETSLEPQDKDKNDP  
 QPEAPPPYPENIAVAAATVKTQDAEEPSTVLKAGAVLQSELASC

**TRTRPLEQKLISEEDLAANDILDYKDDDDKV**

**Restriction Sites:** Sgfl-MluI



**Cloning Scheme:**


**ACCN:** NM\_001007738

**ORF Size:** 555 bp

**OTI Disclaimer:** The molecular sequence of this clone aligns with the gene accession number as a point of reference only. However, individual transcript sequences of the same gene can differ through naturally occurring variations (e.g. polymorphisms), each with its own valid existence. This clone is substantially in agreement with the reference, but a complete review of all prevailing variants is recommended prior to use. [More info](#)

**OTI Annotation:** This clone was engineered to express the complete ORF with an expression tag. Expression varies depending on the nature of the gene.

**Components:** The ORF clone is ion-exchange column purified and shipped in a 2D barcoded Matrix tube containing 10ug of transfection-ready, dried plasmid DNA (reconstitute with 100 ul of water).

**Reconstitution Method:**

1. Centrifuge at 5,000xg for 5min.
2. Carefully open the tube and add 100ul of sterile water to dissolve the DNA.
3. Close the tube and incubate for 10 minutes at room temperature.
4. Briefly vortex the tube and then do a quick spin (less than 5000xg) to concentrate the liquid at the bottom.
5. Store the suspended plasmid at -20°C. The DNA is stable for at least one year from date of shipping when stored at -20°C.

**RefSeq:** [NM\\_001007738.1](#), [NP\\_001007739.1](#)

**RefSeq Size:** 2082 bp

**RefSeq ORF:** 558 bp

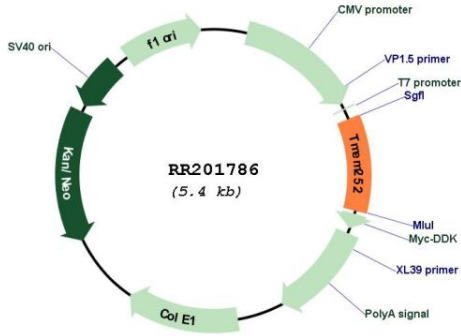
**Locus ID:** 361744

**UniProt ID:** [Q6AXS2](#)

**Cytogenetics:** 1q51

MW: 20.2 kDa

Product images:



Circular map for RR201786