

## Product datasheet for RR201769

### Lrp4 (NM\_031322) Rat Tagged ORF Clone

#### Product data:

Product Type: Expression Plasmids  
 Product Name: Lrp4 (NM\_031322) Rat Tagged ORF Clone  
 Tag: Myc-DDK  
 Symbol: Lrp4  
 Synonyms: Megf7  
 Vector: pCMV6-Entry (PS100001)  
 E. coli Selection: Kanamycin (25 ug/mL)  
 Cell Selection: Neomycin  
 ORF Nucleotide Sequence: >RR201769 representing NM\_031322  
 Red=Cloning site Blue=ORF Green=Tags(s)

TTTTGTAATACGACTCACTATAGGGCGGCCGGAATTCGTCGACTGGATCCGGTACCGAGGAGATCTGCC  
 GCC**CGATCGCC**

ATGAGGCGGTGGTGGGGCGCGTCTGCTCGGCGCCTGCTCTGCGCACACGGCACAGCCAGCAATCTGG  
 AGTGTGCGTGTGGTGGGAGCCACTTCACATGTGCAGTGAGCGCGCTCGGGAATGTACCTGCATCCCCG  
 CCAGTGGCAGTGTGATGGTGACAATGACTGTGGAGACCACAGCGATGAGGATGGTGTACGCTGCCTACC  
 TGTTCCTCTGACTTCCACTGTGACAACGGCAAGTGCATCCGACGCTCCTGGGTGTGATGGGGACA  
 ATGACTGTGAAGATGACTCCGATGAGCAGGACTGTCCCCCGGGAGTGTGAGGAGGACGAGTTCCTCTG  
 CCAGAACGGCTACTGCATCCGGAGTCTGTGGCACTGTGATGGGGACAATGACTGTGGTGACAACAGTGC  
 GAACAGTGCAGATGCGCAAGTGTCTCAGACAAGGAATTCGCTGCAGTGTGGGAGTGCATTGCTGAGC  
 ATTTGTTACTGTGATGGAGACACAGACTGCAAGACGGCTCTGATGAGGAAAGCTGCCCTCAGCAGTACC  
 CTCTCCTCCTGCAACCTGGAAGAGTCCAGTGTCCACGGCCCGCATCCTTGACATCTACCACTGT  
 GACGGGGATGATGACTGCGGAGACTGGTCAGACGAGTCCGACTGCTCCTCCACAGCCCTGCCGCTCTG  
 GGAATTCATGTGTGACAGTGGCTGTGGCTCAACGACAGGCTGGCGTGTGATGGTGTGCGGATGCCA  
 TGACCAGTCTGATGAACGTAACGCACCACCTCCATGTGCACAGCTGAACAGTTTCGCTGTCCGGTACGG  
 CGCTGTGTCCGTCTGTCCTGGCGTGTGATGGGAGGATGACTGCGCGGACAACAGTGTGAAGAAAAT  
 GTGAGAACACAGGAAGCCCCAATGCGCCTCTGACCAGTTCCTGTGTTGGAATGGGCGTTGATTGGGCA  
 GAGGAAGCTCTGCAATGGGGTCAATGACTGCGGCGACAACAGTGCAGAAAGCCACAGCAGAAGTGTGCG  
 CCCCAGGAGGGTGGGAGAACTGCAATGTTAAACAAGGCTGGTGTGCCAGAAAGTGTGATGATTCGAG  
 GGGCAGTGCAGTGTACCTGCCACACAGGCTACCGCTCACAGAGGATGGGAGAACGTGCCAGGATGTGAA  
 TGAATGTGCTGAGGAGGATACTGCAGCCAGGGCTGCACAACAGCGAAGGGCTTCCAGTGTGGTGC  
 GAAGCCGTTATGAGCTGCGGCCGATCGGCGCAGCTGCAAGGCTCTGGGGCCGGAACCTGTGCTACTGT  
 TTGCCAATCGCATCGACATCCGGCAGGTGCTCCGACACCCTCCGAATACAGCTGCTACTGAACAACCT  
 GGAGAACGCCATTGCCCTTACTTTCATCATCGGCGGGAGCTGGTCTTCTGGTCTGATGTACCCTGGAC  
 CGCATCTCCGTGCCAACCTTAATGGCAGCAATGTGGAGGAGTGGTGTCTACTGGGCTAGAGAGCCAG



[View online »](#)

GCGGCTTGGCTGTGGATTGGGTCCATGACAAGCTCTACTGGACTGACTCCGGGACGTCGAGGATTGAGGT  
 GGCTAATCTGGACGGGGCCACCAGGAGGTGCTGCTGTGGCAGAGCCTGGAGAAGCCAGGGCCATTGCC  
 CTGACCCCATGGAGGGAACCATCTATTGGACAGACTGGGGCAACACCCCCGCATCGAGGCCTCCAGCA  
 TGGACGGCTCTGGACGTCGCATCATTGCTGACACTCATTTTTCTGGCCAAACGGCCTCACCATCGACTA  
 CGCTGGACGCCGTATGTACTGGGTGGACGCTAAGCACCACGTATCGAGAGAGCCAATCTAGATGGGAGT  
 CACCGCAAGGCTGTCATTAGCCAGGGCCTCCCACATCCCTTTGCCATCACAGTGTGGAAGACAGCTTGT  
 ATTGGACAGACTGGCACACCAAGAGCATCAATAGTGCCAACAAGTTCACCTGGGAAGAACCCAGGAGATCAT  
 TCGCAACAAGCTCCACTTTCCTATGGACATTCATACCTTGACCCCCAGCGCCAGCCTGCAGGGAAAAAC  
 CGCTGCGGGGACAACAACGGAGGTTGCACTCACCTGTGTCTACCCAGTGGCCAGAACTACACTTGTGCCT  
 GCCCCACCGGCTTCCGAAAAATCAACAGCCACGCCTGTGCCAGAGTCTTGACAAGTTCTGCTTTTTGC  
 CCGAAGGATGGACATCCGTGGATCAGCTTCGACACAGAGGACCTGTCCGACGATGTCATCCCACTGGCT  
 GACGTGCGCAGTGTGTGGCCCTTACTGGGACTCCCGGGATGACCACGTGTACTGGACAGATGTCAGCA  
 CTGATACCATCAGCAGGGCCAAGTGGGATGGAACAGGACAGAAGTGGTGTGACACCAGTTTGGAGAG  
 CCCTGCTGGCCTGGCAATTGATTGGGTACCAACAAACTCTACTGGACAGATGCAGGTACAGACCGGATT  
 GAAGTGGCCAACACGGACGGCAGCATGAGGACAGTGTCTATCTGGGAGAACCTTGATCGCTCTGGGACA  
 TCGTGGTAGAACCATGGGCGGGTACATGTATTGGACTGACTGGGGTGAAGTCCCAAGATTGAACGAGC  
 TGGCATGGATGCCTCAACCCGACAAGTCATCATCTCTCGAATCTGACATGGCCTAATGGATTAGCTATT  
 GACTATGGGTCCCAGCGGCTGTACTGGGCTGTGCCGGCATGAAGACTATTGAATTTGCTGGGCTGGATG  
 GCAGCAAGAGGAAGTACTAATTGGAAGTCAACTCCCCACCCTTTCGGGCTGACTCTATACGGACAGCG  
 CATCTATTGGACTGACTGGCAGACAAAAGTATCCAAAGTGTGACCGGCTGACTGGGCTAGACCGGGAG  
 ACTCTGCAGGAGAACCTGGAGAATCTTATGGACATCCATGTCTCCACCAGCCAGAGGCCTCCAGTGACGA  
 CACCATGTGCTGTGGAGAATGGCGGCTGCAGCCATTTGTGTCTTCGGTCCCAAGTCCGAGCGGCTTCAG  
 CTGTACCTGCCACAGGTATCAACCTGCTGCTTGATGGCAAGACATGCTCACCAGGCATGAACAGTTTC  
 CTCATCTTCGCCAGGAGATTGATGTTCCATGGTCTCCTTGGACATCCCTTATTTTGTGATGTGGTGG  
 TACCCATCAACATGACCATGAAGAACACCATGGCATTGGAGTGGACCCGCTGGAAGGAAAAAGTGTACTG  
 GTCTGACAGCACACTGCACAGGATCAGCCGTGCCAGCCTGGATGGCTCACAGCACGAGGACATCATCACT  
 ACAGGTTTGCAGACCACAGATGGACTTGCAGTGGATGCCATCGGCCGAAAGTGTATTGGACAGACACGG  
 GAACGAATCGGATTGAAGTTGGCAACCTGGATGGGTCTATGCGGAAAGTGTGGTGTGGCAGAACCTTGA  
 CAGTCCCCGGCCATTGTGCTATACCATGAAATGGGGTTCATGTACTGGACAGACTGGGGGAGAATGCC  
 AAAGTAGAGCGTTCGGGATGGATGGCTCAGACCGTACTGTGCTCATCAACAACAACCTAGGGTGGCCTA  
 ACGGACTGACTGTGGACAAGACCAGCTCCCAACTGCTGTGGGCTGATGCCATACTGAGAGAATTGAGGT  
 GGCTGACCTGAACGGTGGCAATCGGCATACATTGGTGTACCAGTGCAGACCCATATGGCCTCACTCTG  
 CTTGACTTTACATCTACTGGACTGACTGGCAGACCCGTAGCATCCACCGGGCCGACAAGAGTACTGGCA  
 GCAATGTTATCCTCGTGAGGTCCAACCTGCCAGGCCTCATGGACATCCAAGCTGTTGACCGGGCACAGCC  
 ACTGGGTTTTAATAAGTGTGGTTCGAGAAATGGCGGCTGCTCCCACCTCTGTTTACCTCGGCCCTCTGGT  
 TTCTCCTGTGCCTGCCCACTGGCATTACAGTGAAGGGGGATGGGAAGACCTGTGACCCCTCTCCGGAGA  
 CCTACCTGCTCTCTAGCCGGGGCTCCATTGCGCGTATCTCACTGGACACCGATGACCACACAGACGT  
 GCATGTCCCTGTCTCTGGGCTCAACAATGTCATCTCCCTAGACTATGACAGTGTGGATGGAAAGGTCTAT  
 TACACAGACGTGTTCTGGATGTTATCAGGCGAGCAGACCTGAATGGCAGCAACATGGAGACTGTTATTG  
 GGCATGGGCTGAAGACCACTGATGGGCTGGCAGTGGACTGGGTTGCCAGAAACCTGTACTGGACAGATAC  
 AGGCCGAAATACCATCGAAGCATCTCGGCTAGATGGTTCCTGTCGAAAAGTCTAATCAACAACAGTCTG  
 GACGAGCCCCGGGCCATTGCTGTTTTCCCAAGAAAGGGTACCTCTTCTGGACAGACTGGGGCCACATTG  
 CCAAGATTGAACGGGCAACCTGGATGGTCTGAGAGGAAGTCTCATCAATGCAGACCTAGGCTGGCC  
 CAATGGCCTTACCTTGGACTATGATACCCGAGGATCTACTGGGTAGATGCACATCTGGATCGGATTGAG  
 AGTGTGACCTCAATGGGAAGCTGAGGCAGGTCTTGGTCAGCCATGTGTCCACCCCTTTGCCCTCACAC  
 AGCAGGACAGGTGGATCTACTGGACAGACTGGCAGACCAATCCATCCAGCGTGTGACAAGTACTCAGG  
 CCGCAACAAGGAGACAGTGTGGCAATGTGGAGGGACTCATGGATATCATCGTGGTGTCCCTCAACGG  
 CAGACAGGGACCAATGCCTGTGGTGTGAACAATGGTGGCTGTAGCCACCTGCTTTGCCAGAGCCTCTG  
 ACTTTGTGTGCGCCTGTCTGATGAGCCAGACAGTCACTCCTGCTCCCTCGTGCCTGGCCTCATGCCTCC  
 TGCTCCCAGAGCTACCAGCCTGAATGAAAAGAGCCAGTGTCCCAACACATTGCCACCACCTTACAT  
 TCTTCTACCACAGGACCCGCACATCTCCAGAGGGGCGAGAAGGAAGATGCTCTGAAAGGGACGCCACG  
 TGGCCTCTGTGCACATTCCAATGAAGCTGTACCTGCTGCTCCAGGTGAAGGACTGCATGTCAGTACCG

CGTTGGTGGACTCCTCAGCGTCCTGCTGATTTTGTGGTGGTACTGCAGCTTTGATGCTATACAGACACAGA  
 AAATCAAATTCACGGATCCTGGAATGGGAAACCTGACCTACAGCAACCCTCCTACCGAATTCCTACTC  
 AGGAAGTGAAAATTGAAGCAGCTCCCAAACCAGCCATGTATAATCAGCTGTGCTATAAGAAAGAGGGTGG  
 ACCTGACCACAGCTACACCAAGGAGAAGATCAAGATTGTAGAGGGAATTCACCTCCTGGCTGGGCATGAT  
 GCTGAATGGGGTACCTCAAGCAACTGCGCAGCTCCAGGGGGGCCTTCTACGGGATCACGTATGCATGA  
 AGACAGACACGGTGTCCATCCAGGCCAGCTCTGGCTCCCTAGATGACACGGAGACAGAGCAGCTGCTGCA  
 GGAAGAGCAGTCTGAGTGTAGCAGTGTTCACACTGCAACCACTCCAGAGAGACGGGGCTCTCTGCCAGAC  
 ACAGGCTGGAAACATGAACGCAAGCTCTCTCAGAAAGCCAGGTC

ACGCGTACGCGGCCGCTCGAGCAGAAAACCTCATCTCAGAAGAGGATCTGGCAGCAAATGATATCCTGGATT  
 ACAAGGATGACGACGATAAGGTTTAA

**Protein Sequence:**

>RR201769 representing NM\_031322  
 Red=Cloning site Green=Tags(s)

MRRWWGALLL GALLCAHGTASNLECACGRSHFTCAVSALGECTCIPAQWQCDGDNDGCDHSDGTLPT  
 CSPLDFHCDNGKICRRSWVCDGDNDCEDDSDQDCPPRECEDEFPCQNGYCIIRSLWHCDGDNDGCDNSD  
 EQCDMRKCSDFRCSGSCIAEHWYCDGDTDCDGSDEESCPSAVPSPPCNLEEFQCA YGRRILDIYHC  
 DGDDDCGDWSDSDCSSHQPCRSGEFMCDSGLCVNAGWRCGDGADCDQSDERNCTTSMCTAEQFRCSG  
 RCVRLSWRCDGEDDCADNSDEENECENTGSPQCADSQFLCWNGRCIGQRKLCNGVNDGCDNSDESPQNCR  
 PRTGEENCNVNNGCAQKCMIRGAVQCTCHTGYRLTEDGRTCDQVNECAEEGYCSQGCTNSEGAFQCWC  
 EAGYELRPDRRCKALGPEPVLLFANRIDIRQVLPHRSEYTL LNNLENAIALDFHHRREL VFWSDVTL D  
 RILRANLNGSNVEEVVSTGLESPGGLAVDWVHDKLYWTD SGTSRIEVANLDGAHRKVLWQSLKPRRAIA  
 LHPMEGTIYWTDWGNTPRIEASSMDGSGRRIIADTHLFWP NGLTIDYAGRMYWVDAKHHVIERANLDGS  
 HRKAVISQGLPHFPAITVFEDSLYWTDWHTKSINSANKFTGKNQEIRNKLHFPMDIHTLHPQRQPAKN  
 RCGDNNGGCTHLCLPSGQNYTCACTGFRKINSHACAQSLDKFLLFARRMDIRRISFDTEDLSDDVIPLA  
 DVRSAVALDWDSDRDHVYWTDVSTDISRAKWDGTGQKVVVDTSLESPAGLAIDWVTNKL YWTDAGTDRI  
 EVANTDGSMTVLIWENLDRPRDIVVEPMGGYMYWTDWGASPKIERAGMDASNRQVISSNLTPWNLAI  
 DYGSQRLYWADAGMKTIEFAGLDGSKRKVLIGSQLPHPFGLTL YGQRIYWTDWQTKSIQSADRLTGLDRE  
 TLQENLENLMDIHVFHRQRPVTPCAVENGGCSHLCLRSPSPSGFSCTCPTGINLLLDGKTCSPGMNSF  
 LIFARRIDVRMVS LDIPYFADVVPINMTMKNTIAIGVDPLEGKVYWSDSLHRI SRASLDGSQHEDIIT  
 TGLQTTDGLAVDAIGRKVYWTDTGTNRIEVGNLDGSMRKVLVWQNL DSPRAIVLYHEMGFMYWTDWGENA  
 KLERSGMDGSDRTVLINNNL GWPNGLTVDKTSSQLLWADAHTERIEVADLNGANRHTLVSPVQHPYGLTL  
 LDSYIYWTDWQTRS IHRADKSTGSNVILVRSNLPGLMDIQAVDRAQPLGFNKCGRNGGCSHLCLPRPSG  
 FSCACPTGIQLKGDGKTCDPSPETYLLFSSRGSIRRLSDTDDHTDVHVPV PGLNNVISLDYDSVDGKVY  
 YTDVFLDVIRRADLNGSNMETVIGHGLKTTDGLAVDWARNLYWTD TGRNTIEASRLDGSCRKVLINNSL  
 DEPRAIAVFPKGYLFWTDWGHIAKIERANLDGSERKVLINADL GWPNGLTLDYDTRRIYWVDAHLDRIE  
 SADLNGKLRQVLVSHVSHPFAL TQQDRWIYWTDWQTKSIQRVDKYSGRNKETVLANVEGLMDIIVVSPQR  
 QTGTNACGVNNGCSHLCFARASDFVCACPDEPD SHPCSLVPGLMPPAPRATSLNEKSPVLPNTLPTTLH  
 SSTTRTRTSPEGAEGRC SERDAQLGLCAHSNEAVPAAPGEGLHVS YAVGGLLVLLILLVTAALMLYRHR  
 KSKFTDPGMNLTYSNPSYRTSTQEVKIEAAPKAMY NQLCYKKEGGPDHSYTKKIKIVEGIHLLAGHD  
 AEWGDLKQLRSSRGLLRDHVCMKTDTVS IQASSGSLDDTETEQLLQEEQSECSSVHTATT PERRGSLPD  
 TGWKHERKLSSESQV

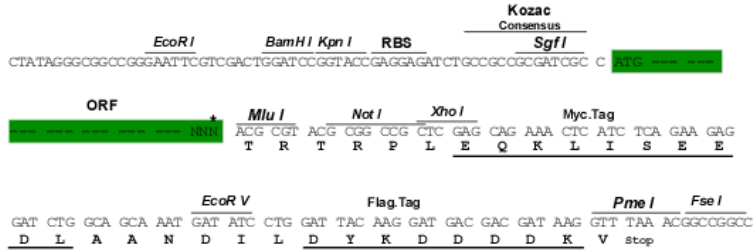
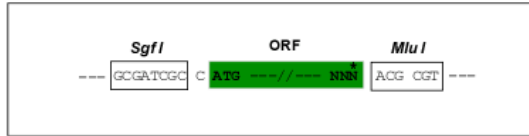
TRTRPLEQKLI SEEDLAANDILDYKDDDDKV

**Restriction Sites:**

Sgfl-Mlul

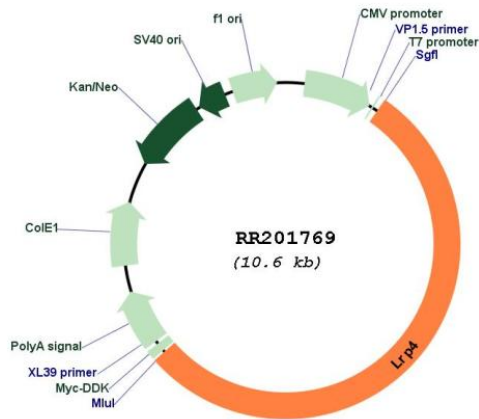
**Cloning Scheme:**

Cloning sites used for ORF Shutting:



\* The last codon before the Stop codon of the ORF

**Plasmid Map:**



ACCN: NM\_031322  
 ORF Size: 5715 bp

|                               |   |
|-------------------------------|---|
| <b>OTI Disclaimer:</b>        | The molecular sequence of this clone aligns with the gene accession number as a point of reference only. However, individual transcript sequences of the same gene can differ through naturally occurring variations (e.g. polymorphisms), each with its own valid existence. This clone is substantially in agreement with the reference, but a complete review of all prevailing variants is recommended prior to use. <a href="#">More info</a>  |
| <b>OTI Annotation:</b>        | This clone was engineered to express the complete ORF with an expression tag. Expression varies depending on the nature of the gene.  |
| <b>Components:</b>            | The ORF clone is ion-exchange column purified and shipped in a 2D barcoded Matrix tube containing 10ug of transfection-ready, dried plasmid DNA (reconstitute with 100 ul of water).  |
| <b>Reconstitution Method:</b> | <ol style="list-style-type: none"> <li>1. Centrifuge at 5,000xg for 5min.</li> <li>2. Carefully open the tube and add 100ul of sterile water to dissolve the DNA.</li> <li>3. Close the tube and incubate for 10 minutes at room temperature.</li> <li>4. Briefly vortex the tube and then do a quick spin (less than 5000xg) to concentrate the liquid at the bottom.</li> <li>5. Store the suspended plasmid at -20°C. The DNA is stable for at least one year from date of shipping when stored at -20°C.</li> </ol> |
| <b>RefSeq:</b>                | <a href="#">NM_031322.3</a> , <a href="#">NP_112612.2</a>   |
| <b>RefSeq Size:</b>           | 7784 bp   |
| <b>RefSeq ORF:</b>            | 5718 bp   |
| <b>Locus ID:</b>              | 83469   |
| <b>Cytogenetics:</b>          | 3q24  |
| <b>MW:</b>                    | 211.9 kDa   |
| <b>Gene Summary:</b>          | mouse homolog has similarity to the low density lipoprotein receptor family, however, it does not bind very low density lipoprotein [RGD, Feb 2006]   |