

## Product datasheet for **RR201751**

### **Slc4a11 (NM\_001107775) Rat Tagged ORF Clone**

#### **Product data:**

Product Type:	Expression Plasmids
Product Name:	Slc4a11 (NM_001107775) Rat Tagged ORF Clone
Tag:	Myc-DDK
Symbol:	Slc4a11
Vector:	pCMV6-Entry (PS100001)
E. coli Selection:	Kanamycin (25 ug/mL)
Cell Selection:	Neomycin



[View online »](#)

**ORF Nucleotide Sequence:**

>RR201751 representing NM\_001107775  
 Red=Cloning site Blue=ORF Green=Tags(s)

TTTTGTAATACGACTCACTATAGGGCGGCCGGAATTCGTCGACTGGATCCGGTACCGAGGAGATCTGCC  
 GCC**CGGATCGCC**

ATGTCACAGAATGAACACTGTCAGGACTCCGGTGAATACTTCTCAGCCGCACTCTGGGATACTTCAAGA  
 ATGACACAGATGATAACCTGACGTCGGGAGGACAGCCTGGGGATGAGGTCTTTGACACGCTCAACTC  
 CTCATTGTGTCTGGCGAGAGCATCCGTTTTTTGTCAATGTCAACCTTGAAGTGACGCTTCCAATCT  
 GACATAGAAGCTGCAACTGGAGGCTGCGTCTTACACACCTCCCGAAGTATCTGAAATTAAGAAGT  
 TCGAGGAAGAGGTCGGTGCACACCGTGACCTGGATGGCTTCTGGCCAGGCCAGCATCATCTGAATGA  
 GACAGCTACCTACTGGATGATGTGCTCCGAATATGCTAAACCGCTTGGCCAGGACCCCAACCATGCA  
 GAGCCTGATTGTGACCTGGACCTGCTCATGGCTAAGCTCTTACAGATGCTGGGGCCCCATGGAGAGTA  
 AAGTCCACCTGCTGTGAGATACCATCCAGGGAGTGACCGCCACTGTCAGAGGACTGCAGTACGAGCAGTC  
 ATGGCTCTGCATCGTCTGTACCATGAAGTCCCTACAGAAGCGGCATGTGTGTATCAGCCGCTGGTTCGG  
 CCACAGAAGTGGGGGAAAACCTCTGTGAGGTTGCTTTGTCTCCTGGTCTGGCCCCACCAAGATGA  
 AAAGCACCAAGACTGCGATGGAGGTGGCAGCACATTCGCCACCATGTTCTCCGACATCACCTTCGCCCA  
 GAAGTCTCTGAAGACCCGCACAGAGGAAGATTCAAGGAGGCTTTGGTGCACCAGAGACAGCTGCTCACC  
 ATGATGATGCCAAGAGCAGCCGGGCACAGCATGAGCTCCCTCCATACTCAGACACCCCTCGGCCCCGA  
 AATGCAAGGACTTTTTCCCGTTTGGGAAAGGCATCTGGGTGGACATCATGCGCAGGTTCCCTGTGTACCC  
 GCTGGACTTACGGACGGCATCATTGGGAAAGGCAAGACTGTCCGCAAAATATGTCACCACCAGCTCTTC  
 CTCTACTCGCCTGCCTTTACCGACATTGCTTTGGATCCCTCAACGATGAGAACACAAAACGGAGCCA  
 TCGATGTGCAGAAGACCATAGCAGGACAGAGCATCGGAGGCCTCTGTATGCACTGTTCTCTGGCAGCC  
 CCTGGTGATCCTGTTGACAACCGCACCCCTGGCCATCTACACCCAGGTGATCCGGGTCTCTGTGATGAC  
 TACAACCTGGACTTCAACGCCTTCTATGCGTGGACAGGCCTGTGGAACAGCTTCTCCTTGCCTTTATG  
 CCTTCTCAACCTCAGCCTGCTTATGAATCTCTTAAAGAGGTCAACAGAGGAGATCATTGCTCTGTTTAT  
 TTCCATCACGTTTGTGCTGGACGCTGTCAAGGGCATGGTCAAAATCTTCTGGAAGTACTACTATGGTAC  
 CACTACCACACAAAAGGACTTCTCCTGGCAAGCCTGTTGGGCATTAGCAGAAGCCCCAACACCAGTC  
 TCCACTGCCTCAACACCAGCTTCTGGCCAGCCCCATAGAGATGACTACAGCCAGCAGCCCCATCAG  
 TACACTCAACACAGGCTACTGCAGTGTCTCAGCCTCCTCATCATGCTGGGCACACTCTGGCTGGGCTAC  
 ACCCTCTACCAGTTCAAGAAAAGCCCTACCTGCACCCATGTGTGCGTGAGACCCTGTCTGACTGTGCC  
 TGCTATCGCCGTGCTCTCCTTCCCTCATCAGCTCCTATGGCTTCCAGGAAATTGAGATGAGCAAGTT  
 CCGGTACAACCCAGCGAGAGCCTTTTTGAGGTGGCACAGATCCACTCTCTGTCTTCAAGGCCATCAGC  
 AGTGCCATGGGTCTTGGCTTCTGCTCTCCTTGTCTTTCTTATTGAGCAGAACCTGGTGGCCGCCCTGG  
 TCAATGCACCAGAGAACAGGCTGGTGAAGGGCACTGCCTATCACTGGGACCTCCTGCTGCTTGGCATCAT  
 CAATACGGGGCTGTCTCTGTTGGGCTACCCTGGATCCACGCCGCTATCCCCATTCCCCTCTGCATGTG  
 CGGGCACTGGCCTTAGTGGAGGAACGTGTGGAGAATGGGCACATTTATGAAACGATTGTGAATGTTAAGG  
 AGACTCGGCTGACTGCGCTGGTGCCAGTGTCTGGTGGTCTGTCCCTGCTGCTTCCATTCCCCT  
 GCAGTGGATCCCCAAGCCCGTCTATGGACTTCTCTACATTGCGTGCCTCCCTGGACGGCAAC  
 CAGCTCTTCTCACGTGTAGCTCTGCTGCTCAAGGAGCAAACGTCATACCCACCCACACTACATCCGGA  
 GAGTGCCCAAAGGAAGATTCACTACTTACGGGCTGCAGATTCTGCAGCTGCTTCTGCTGTGCGTT  
 CGGCATGAGCTCCCTGCCCTACATGAAGATGGTCTTCCGCTCATCATGATTGCCATGATCCCAATCCGG  
 TATAATCTGTACCCGAATCATTGAAGCAAGTACTGGATGTCATGGATGCCGAGCACAGGCC

**ACGCGT**ACGCGGCCGCTCGAGCAGAACTCATCTCAGAAGAGGATCTGGCAGCAATGATATCTGGATT  
 ACAAGGATGACGACGATAAGGTTTAA

**Protein Sequence:** >RR201751 representing NM\_001107775  
Red=Cloning site Green=Tags(s)

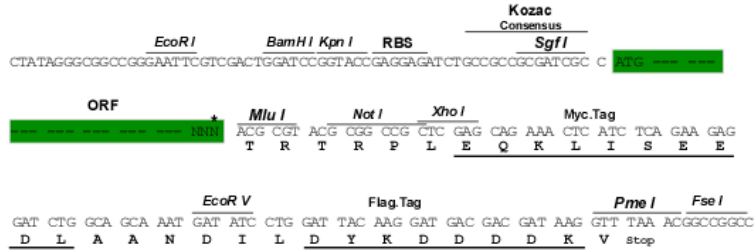
MSQNEHCQDSGEYFSAATLGYFKNDTDDNPDVREDSLGDEVFDTVNSSIVSGESIRFFVNVNLEVQPSKS  
DIEAATGGCVLLHTRSRYLKLKNFEEVRAHRDLGFLAQASIILNETATSLDDVLRMLNRFQDPNHA  
EPDCDLDLLMAKLFTDAGGPMEKVVHLLSDTIQGVATVRGLQYEQSWLCIVCTMKSLQKRHVCSRLVR  
PQNWGENSCEVRFVILVLAPPKMKSTKTAMEVARTFATMFSDITFRQKLLKTRTEEEFKEALVHQRQLLT  
MMMPRAAGHSMSLHTRHPRPPKCKDFPFPGKIWVDIMRRFPVYPLDFTDGIIIGKGTGKYVTTTLF  
LYFACLLPTIAFGSLNDENTNGAIDVQKTIAGQSIGLLYALFSGOPLVILLTTAPLAIYTQVIRVICDD  
YNLDFNAFYAWTGLWNSFFLALYAFLNLSLLMNLFKRSTEEIIALFISITFVLDAVKGMVKIFWKYYYGH  
HYHTKRTSSLASLLGISRPNTSLHTALNTSFLASPIEMTTASSPISTHSNQATAVLSLLIMLGTWLGY  
TLYQFKKSPYLHPCVRETLSDCALPIAVLSFSLISSYGFQEIEMSKFRYNPSESLFEVAQIHSLSFKAIS  
SAMGLGFLLSLLFFIEQNLVAALVNAPENRLVKGTAYHWDLLLLAIINTGLSLFGLPWIHAAYPHSPLHV  
RALALVEERVENGHIYETIVNVKETRLTALGASVLVGLSLLLLPFPLQWIPKPVLYGLFLYIALTSLDGN  
QLFSRVALLLKEQTSYPPTHYIRRVQPKIHYFTGLQILQLLLLCAFGMSSLPYMKMVFPLIMIAMIPIR  
YNLLPRIIEAKYLDVMDAHRP

TRTRPLEQKLISEEDLAANDILDYKDDDDKV

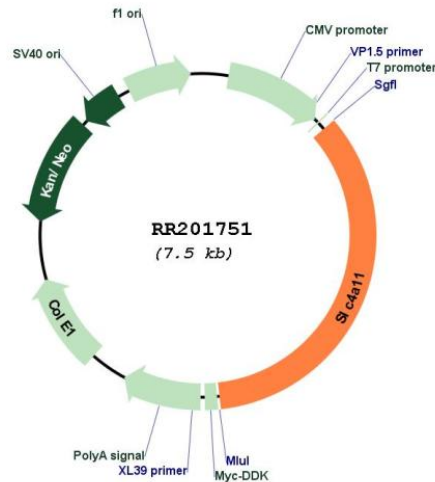
**Restriction Sites:** Sgfl-MluI

Cloning Scheme:

Cloning sites used for ORF Shutting:



\* The last codon before the Stop codon of the ORF

**Plasmid Map:**


**ACCN:** NM\_001107775

**ORF Size:** 2586 bp

**OTI Disclaimer:** The molecular sequence of this clone aligns with the gene accession number as a point of reference only. However, individual transcript sequences of the same gene can differ through naturally occurring variations (e.g. polymorphisms), each with its own valid existence. This clone is substantially in agreement with the reference, but a complete review of all prevailing variants is recommended prior to use. [More info](#)

**OTI Annotation:** This clone was engineered to express the complete ORF with an expression tag. Expression varies depending on the nature of the gene.

**Components:** The ORF clone is ion-exchange column purified and shipped in a 2D barcoded Matrix tube containing 10ug of transfection-ready, dried plasmid DNA (reconstitute with 100 ul of water).

**Reconstitution Method:**

1. Centrifuge at 5,000xg for 5min.
2. Carefully open the tube and add 100ul of sterile water to dissolve the DNA.
3. Close the tube and incubate for 10 minutes at room temperature.
4. Briefly vortex the tube and then do a quick spin (less than 5000xg) to concentrate the liquid at the bottom.
5. Store the suspended plasmid at -20°C. The DNA is stable for at least one year from date of shipping when stored at -20°C.

**RefSeq:** [NM\\_001107775.1](#), [NP\\_001101245.1](#)

**RefSeq Size:** 3039 bp

**RefSeq ORF:** 2589 bp

**Locus ID:** 311423

**Cytogenetics:** 3q36

**MW:** 97 kDa